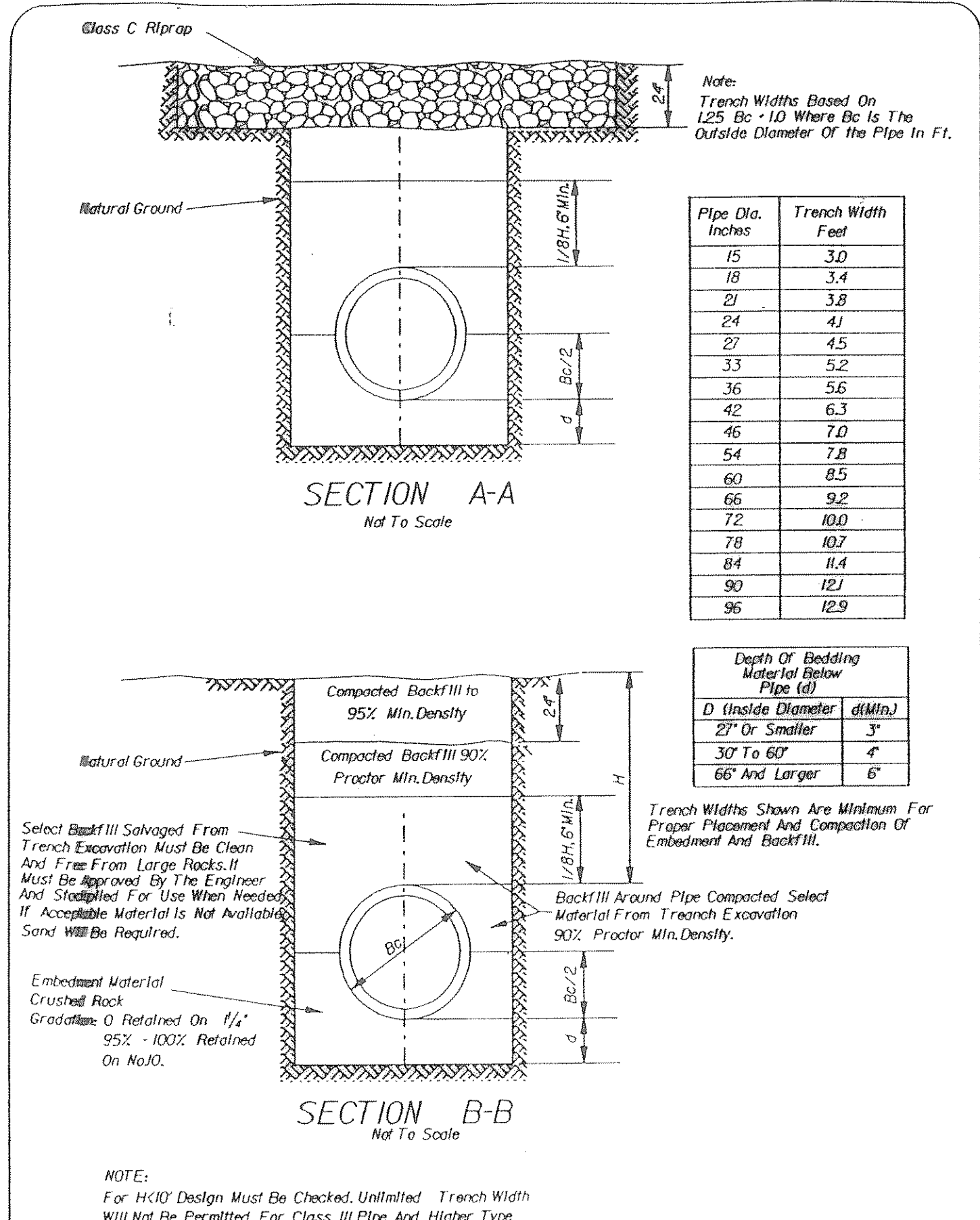
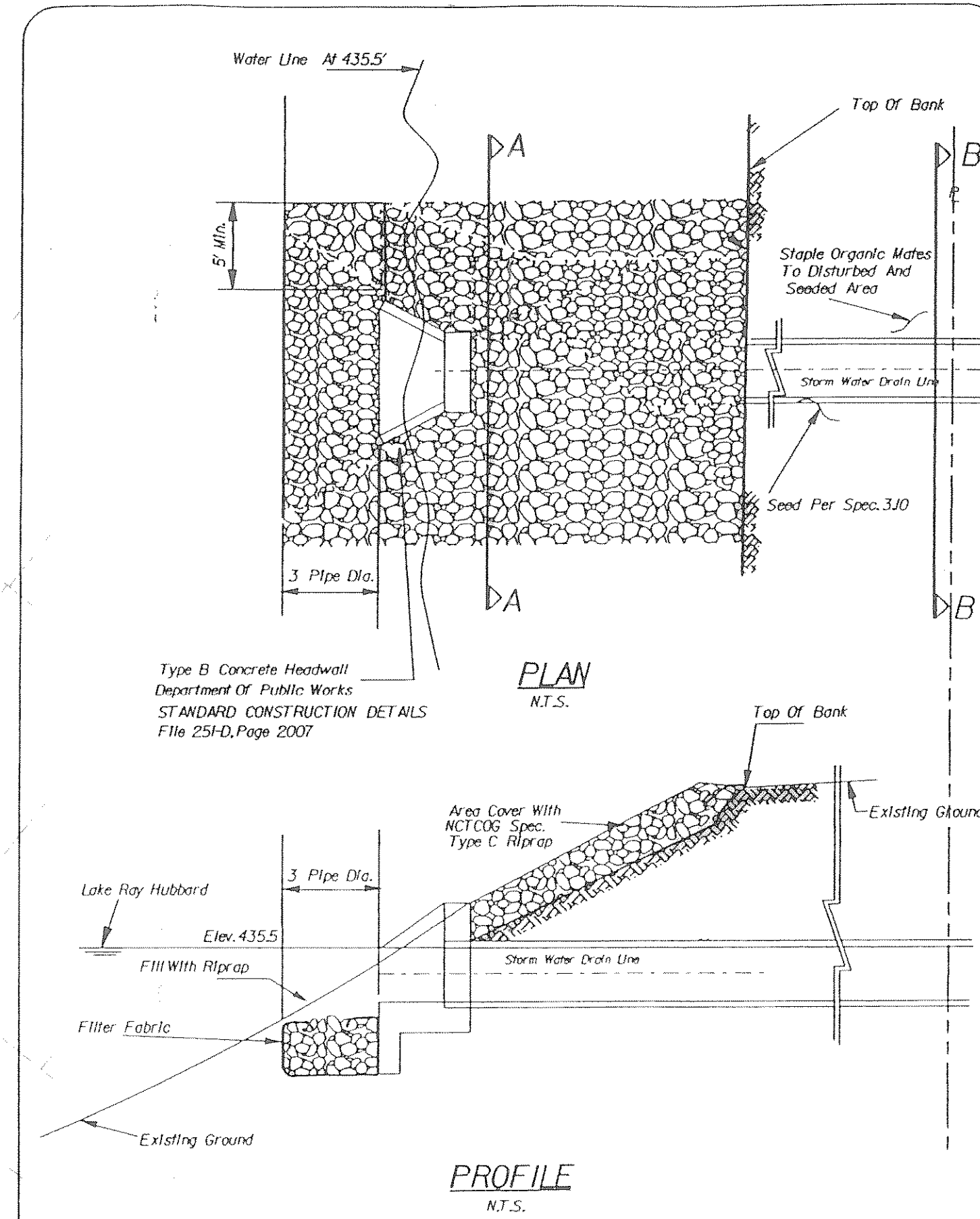
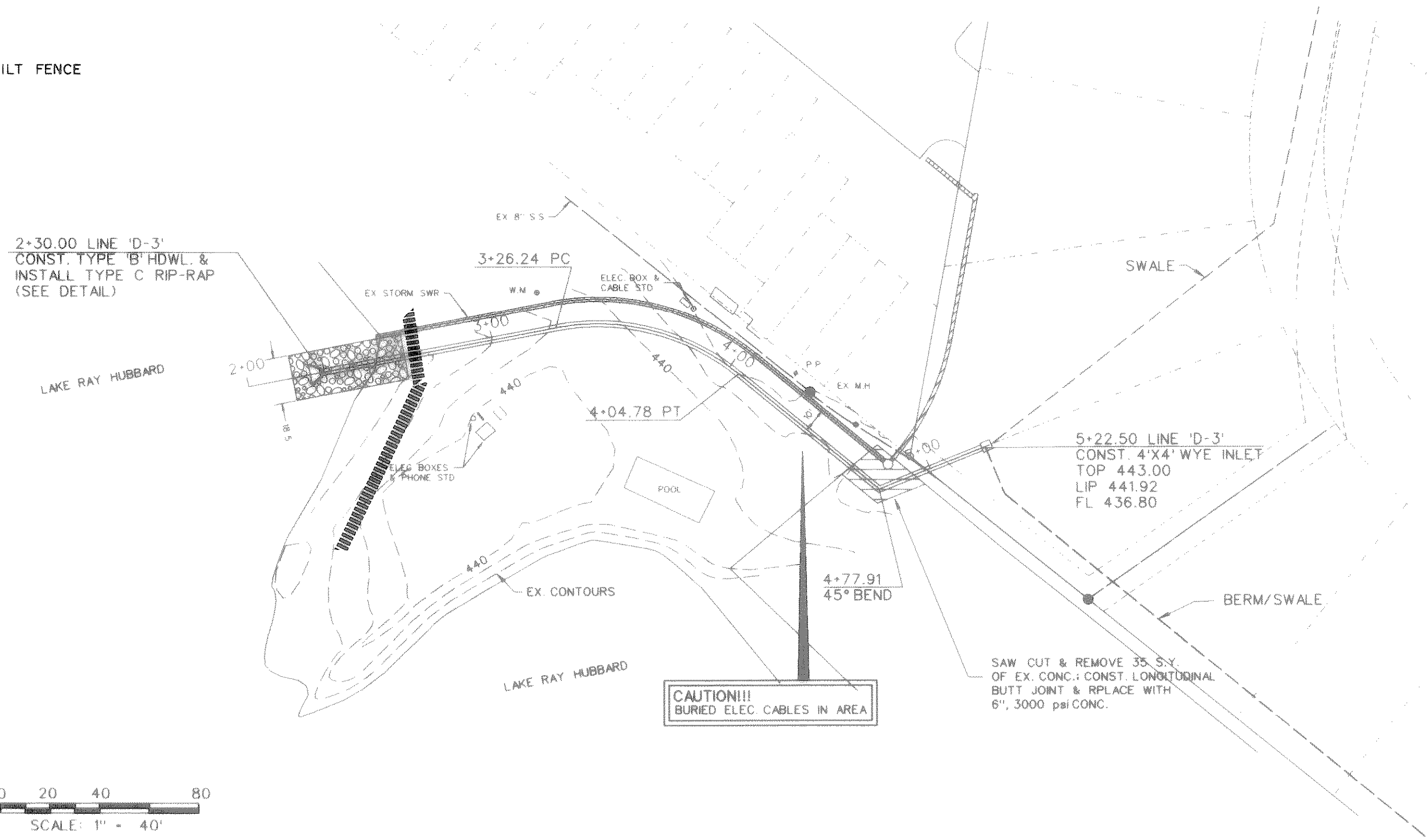


**CONTRACTOR NOTES:**

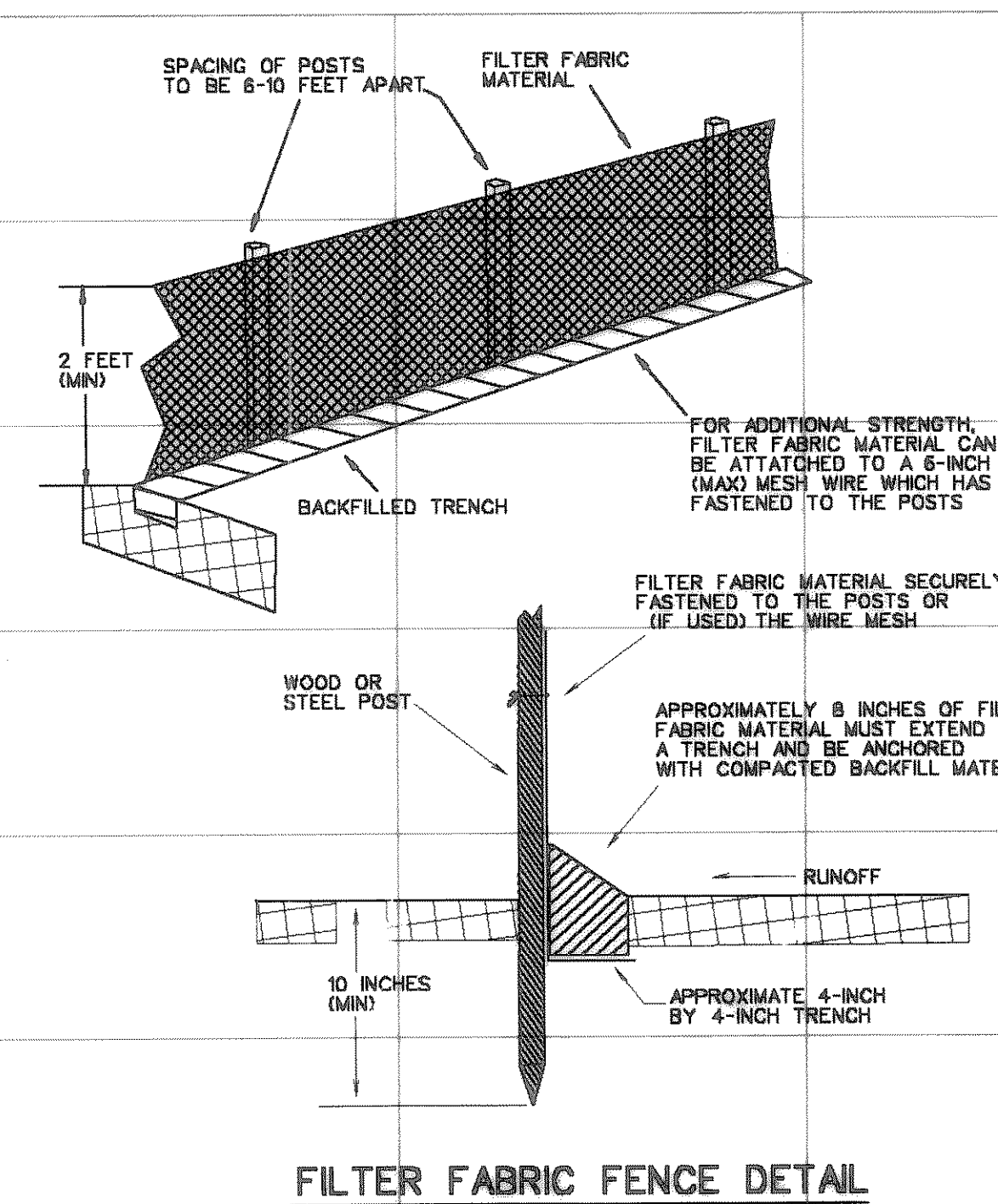
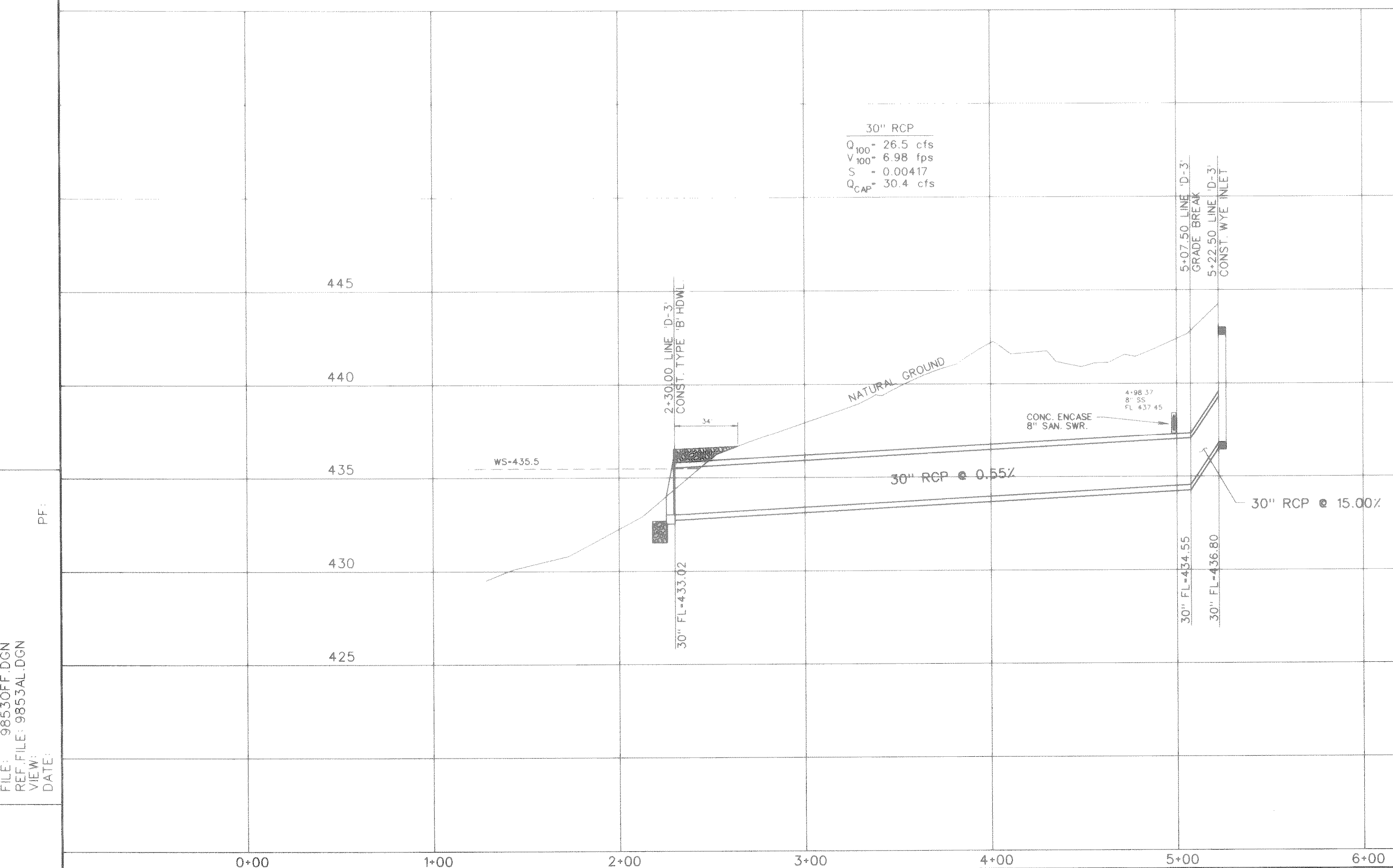
1. NOTIFY DALLAS WATER UTILITIES (DWU) CONSTRUCTION INSPECTION AT (214) 948-4562 FORTY EIGHT (48) HOURS PRIOR TO CONSTRUCTION.
2. LOCATE ALL EXIST. UTILITIES FOR LOCATION AND ELEVATION PRIOR TO CONSTRUCTION.
3. ALL DISTURBED AREAS SHALL BE RE-SODDED AS REQUIRED BY DWU AND THE CITY OF ROCKWALL.

■■■■■■■■ SILT FENCE

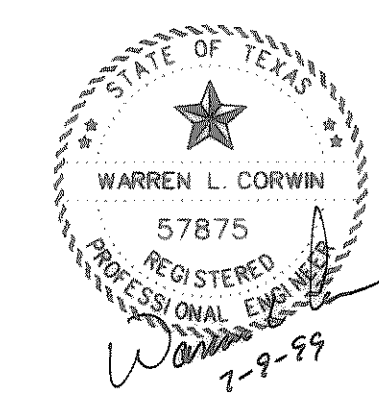


dallas water utilities LAKE RAY HUBBARD - TYPICAL STORM SEWER INSTALLATION

dallas water utilities LAKE RAY HUBBARD - TYPICAL STORM SEWER INSTALLATION



NO	REVISIONS	BY	DATE



The seal appearing on this document was authorized by Warren L. Corwin, P.E. 57875, on July 9, 1999

CORWIN ENGINEERING, INC.  
200 W. BELMONT, SUITE E  
ALLEN, TEXAS 75013 (972) 396-1200

DEVELOPMENT PLANS FOR  
LAKESIDE VILLAGE PHASE V-B  
ROCKWALL, TEXAS

STORM SEWER PLAN AND PROFILE  
OFFSITE

DRAWN BY	DESIGNED BY	CHECKED BY	SHEET NO.
CEI	CEI	CEI	8B OF 10
JOB NUMBER	DATE	SCALE: 1"=4' V 1"=40' H	
9853	JULY 1999		

AS-BUILT JUNE 2000  
INFORMATION PROVIDED BY CONTRACTORS  
(NOT FIELD VERIFIED)

FILE: 9853OFF.DGN  
REF FILE: 9853AL.DGN  
VIEW:  
DATE: