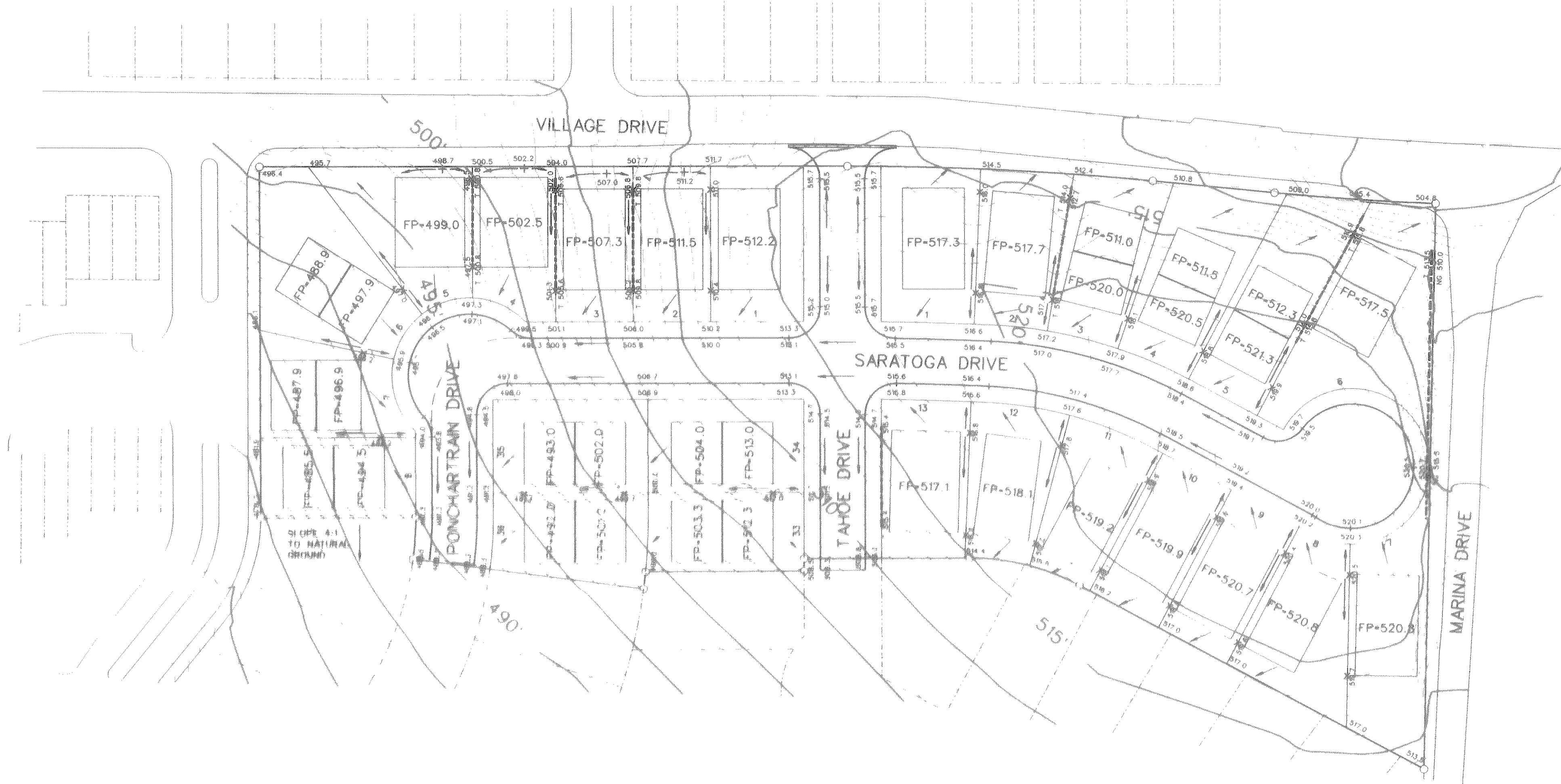
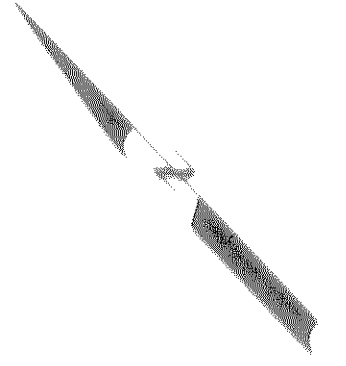
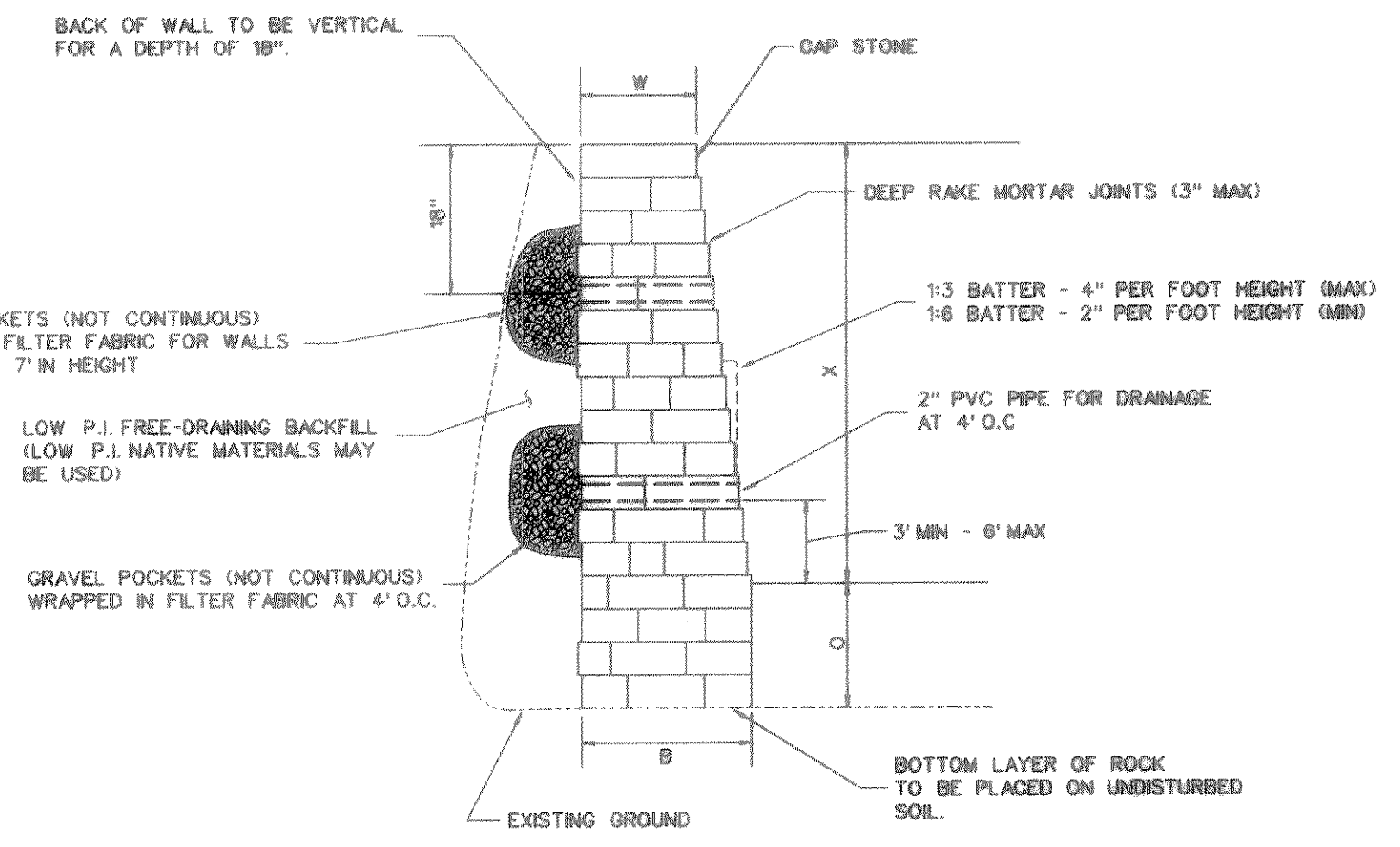


0 25 50 100  
SCALE: 1" = 50'



**NOTE:**  
RETAINING WALL -----  
T- TOP OF WALL



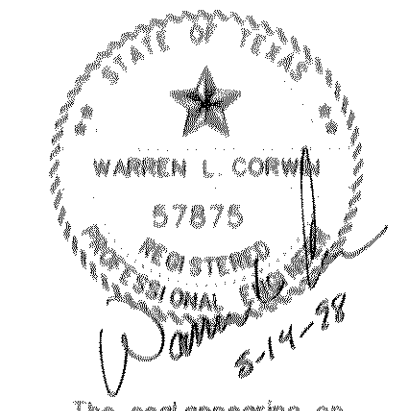
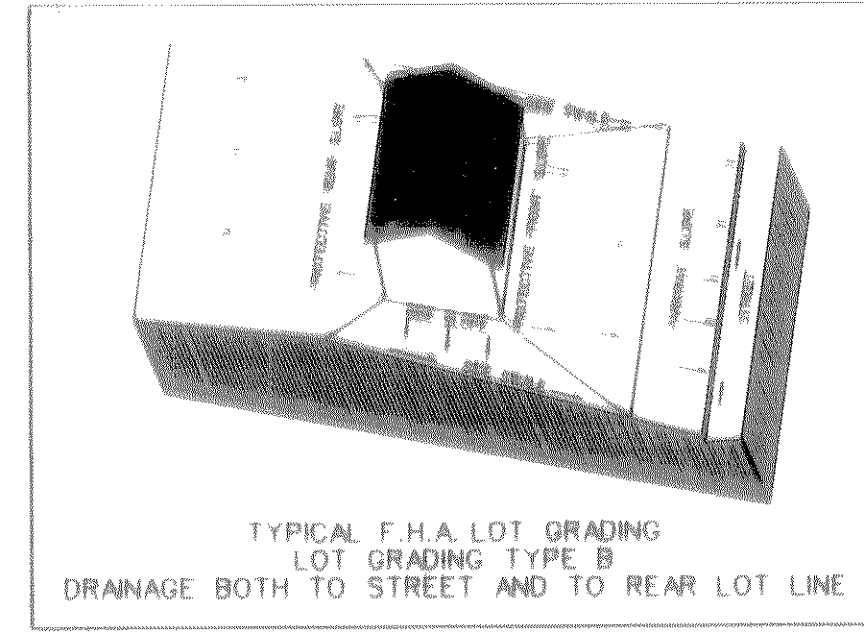
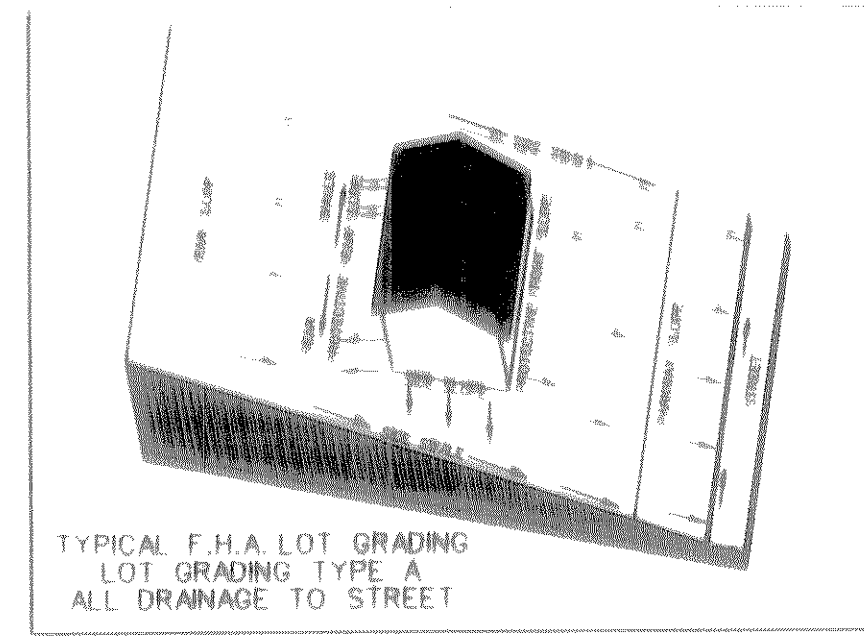
**RETAINING WALL DETAIL**  
N.T.S.

WALL HEIGHTS - X	B	O	W
0' TO 4'	20" MIN	12" MIN	12" MIN
4' TO 5'	26" MIN	12" MIN	12" MIN
5' TO 6'	32" MIN	12" MIN	14" MIN
6' TO 7'	42" MIN	12" MIN	14" MIN
7' TO 8'	48" MIN	12" MIN	14" MIN
8' TO 9'	48" MIN	12" MIN	14" MIN

- NOTES:**
- ALL STONE TO BE TAN MILSAP STONE OR LIMESTONE.
  - WALL CONTRACTOR TO PROVIDE STONE SAMPLE FOR OWNER'S APPROVAL.
  - ADJACENT VERTICAL JOINTS SHALL BE 3" APART MINIMUM.
  - STEEL SCHEDULE:  
LADEER WIRE ON BOTTOM TWO COURSES, EVERY THIRD COURSE AFTER THAT.
  - ONLY LOW P.I. (P.I. < 15) MATERIAL SHALL BE USED AS BACKFILL BEHIND WALL. LOW P.I. NATIVE SOILS MAY BE USED.
  - BOTTOM OF WALL TO BE PLACED ON UNDISTURBED SUBGRADE WHERE POSSIBLE. SUBGRADE TO BE COMPACTED TO BETWEEN 95 AND 105 PERCENT FO MAXIMUM DRY DENSITY IN ACCORDANCE TO A.S.T.M. D 698.
  - SHOULD ANY SITE CONDITIONS ARISE THAT WOULD WARRANT ANY DEVIATION FROM THESE DESIGN SPECIFICATIONS, CONTRACTOR MUST NOTIFY ENGINEER PRIOR TO PROCEEDING WITH CONSTRUCTION.

**BENCHMARKS:**  
ELEVATION SUR 24

- NOTES:**
- Finish Floor Elevation to be 0.70 Feet above Finished Pad (FP)
  - Additional Erosion Control to be installed in Parkways as determined by the City Inspector
  - Finished Pad Elevations are within ± 0.3 Feet.



The seal appearing on this document was authorized by Warren L. Corwin, P.E. 57875, on May 14, 1998

**AS-BUILT NOVEMBER 1998**  
INFORMATION PROVIDED BY CONTRACTORS  
(NOT FIELD VERIFIED)

<b>CORWIN ENGINEERING, INC.</b> 8131 LBJ FREEWAY, SUITE 333 DALLAS, TEXAS 75251 (214) 480-0305			
<b>DEVELOPMENT PLANS FOR LAKESIDE VILLAGE PHASE V ROCKWALL, TEXAS</b>			
GRADING PLAN			
DRAWN BY	DESIGNED BY	CHECKED BY	SHEET NO.
	WLC	WLC	
JOB NUMBER	DATE	SCALE:	11 OF 12
9766	JANUARY 1998	1"=50'	

FILE: 9766GRAD.DGN  
 REF FILE:  
 VIEW:  
 DATE: