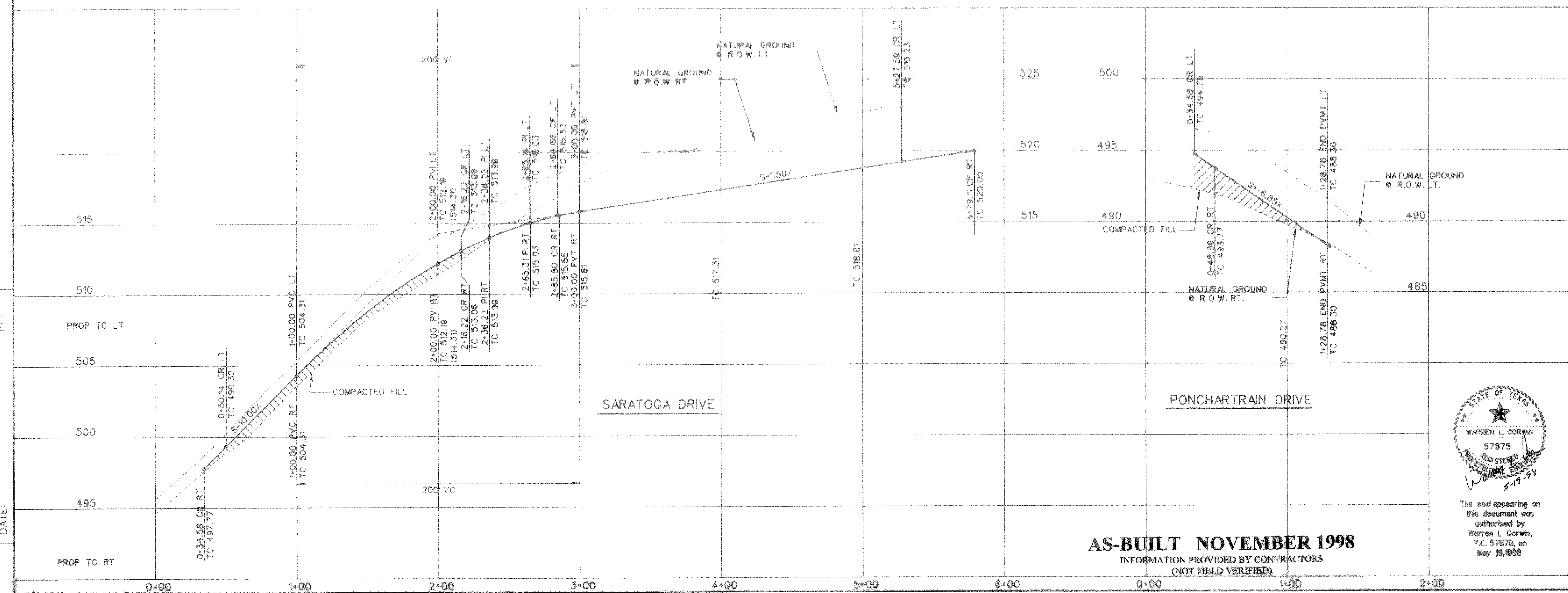
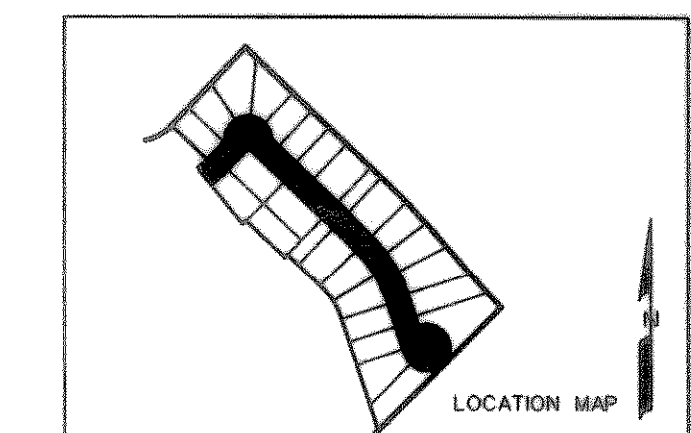
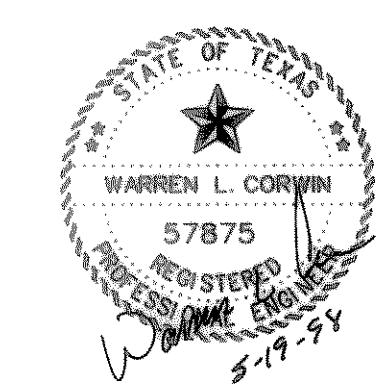


BENCHMARKS:  
 "□" found on the top of curb of the northwest corner of railroad bridge @ Lakeside Drive.  
 ELEVATION = 506.23



NO.	ADDED INGRESS/EGRESS ESMT. REVISIONS	PJB	5-19-98
BY	DATE		
1			



The seal appearing on this document was authorized by Warren L. Corwin, P.E. 57875, on May 19, 1998

**AS-BUILT NOVEMBER 1998**  
 INFORMATION PROVIDED BY CONTRACTORS  
 (NOT FIELD VERIFIED)

**CORWIN ENGINEERING, INC.**  
 8131 LBJ FREEWAY, SUITE 333  
 DALLAS, TEXAS 75251 (972) 480-0305

DEVELOPMENT PLANS FOR  
**LAKE SIDE VILLAGE**  
 PHASE V-A  
 ROCKWALL, TEXAS

SARATOGA DRIVE  
 PONCHARTRAIN DRIVE

DRAWN BY	DESIGNED BY	CHECKED BY	SHEET NO.
RDS	CEI	CEI	
JOB NUMBER	DATE	SCALE: 1"=4' V 1"=40' H	
9766	JANUARY 1998		5 OF 12

FILE: 9766SARA.DGN  
 REF. FILE:  
 VIEW:  
 DATE:

PF: