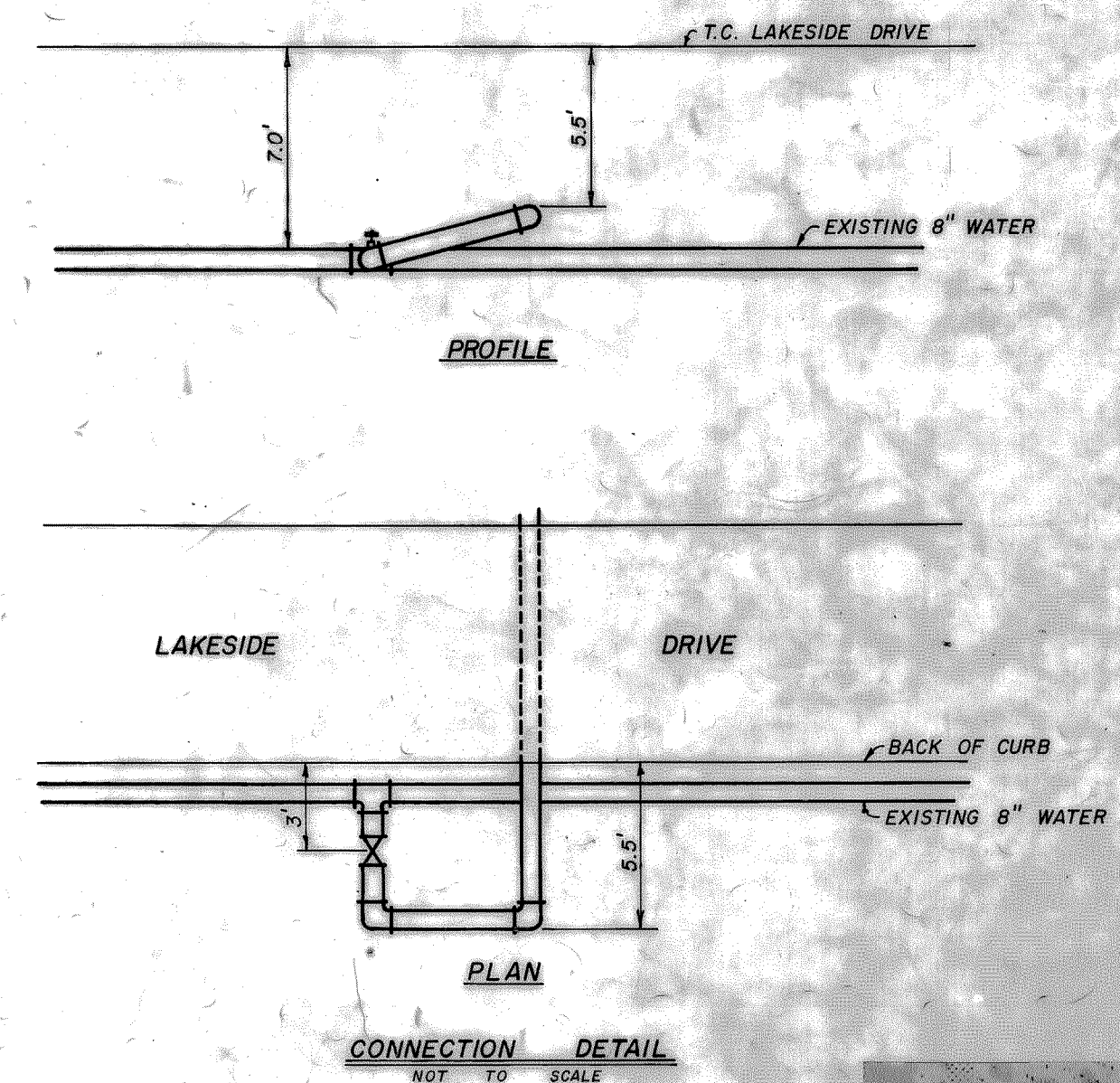
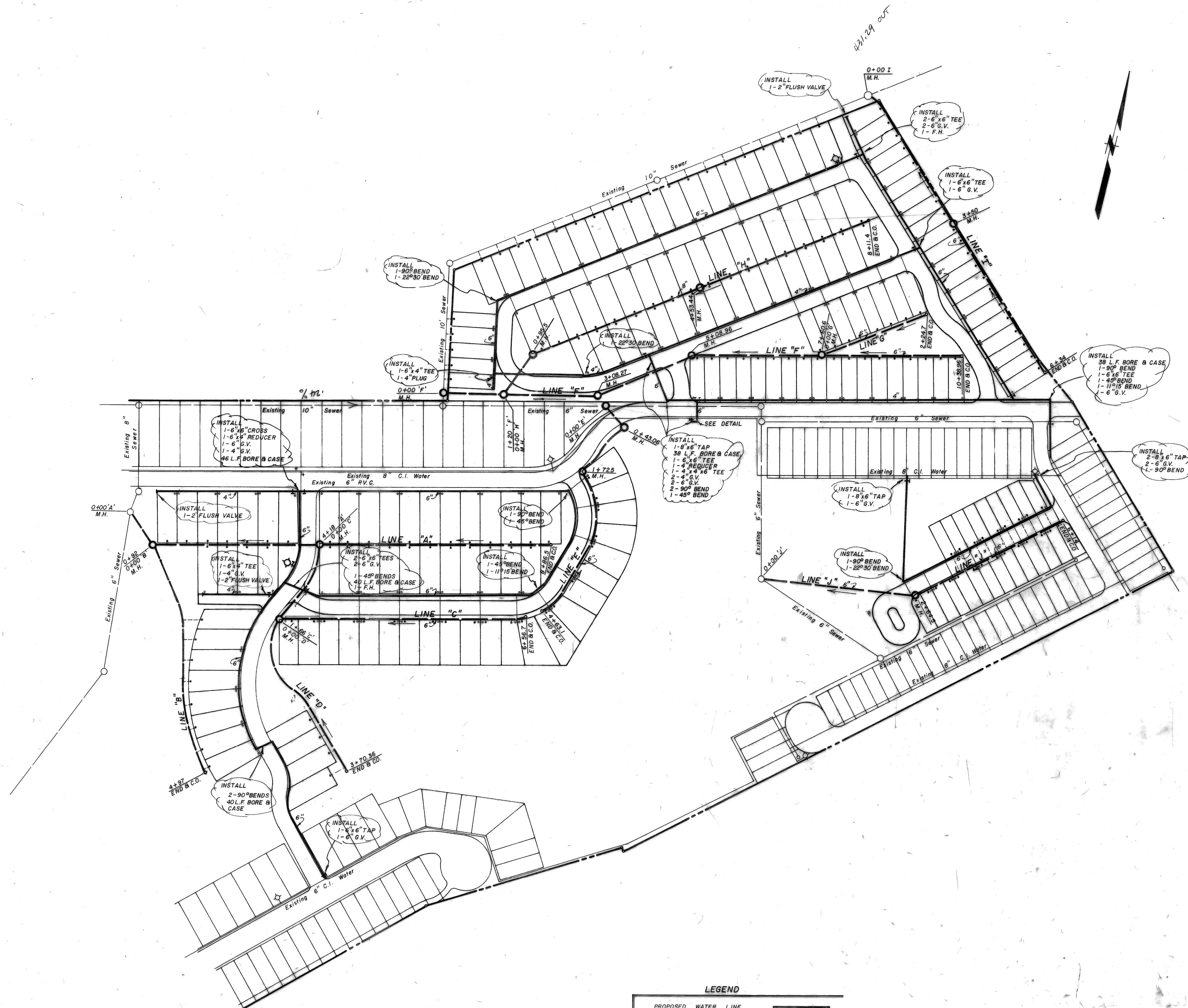


GENERAL NOTES

1. All water lines shall be Class 150 cast iron pipe.
2. All water lines shall have a minimum cover of 36 inches.
3. Water services crossing streets shall be one inch smaller than branch and shall serve two lots.
4. Contractor will install mains and service lines after streets have been completed. After the paving contractor has completed the utility contractor will install meter boxes according to Rockwell standards.
5. Sewer services serving downhill lot on Line "A" shall be 1/2" higher than the main.
6. Where the sewer mains are deeper than 8 feet, cover shall be no deeper than 8 feet, and shall be located by the contractor.



LEGEND

PROPOSED WATER LINE	—
PROPOSED SANITARY SEWER	—
MANHOLE	○
FIRE HYDRANT	⊙
CLEANOUT	⊙
WATER SERVICE	⋯
SEWER SERVICE	⋯

WATER & SEWER PLAN				LAKESIDE VILLAGE	
ROCKWALL, TEXAS				PHASE III	
DESIGN	DRAWN	SCALE	DATE	DALLAS	HAROLD EVANS — CONSULTING ENGINEER 328-8133
H L E	M G H	1" = 100'	9 / 72		

AS BUILT