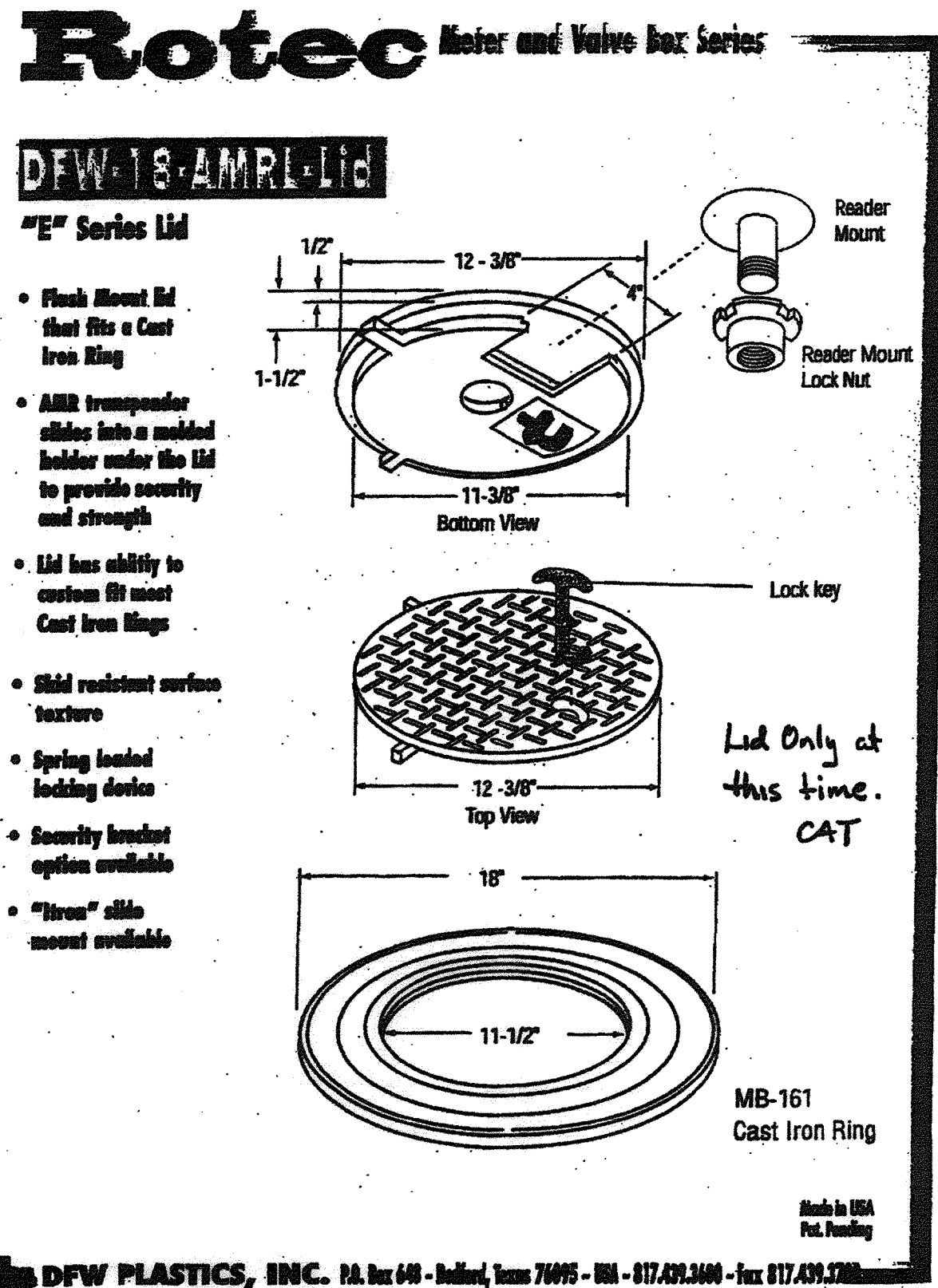
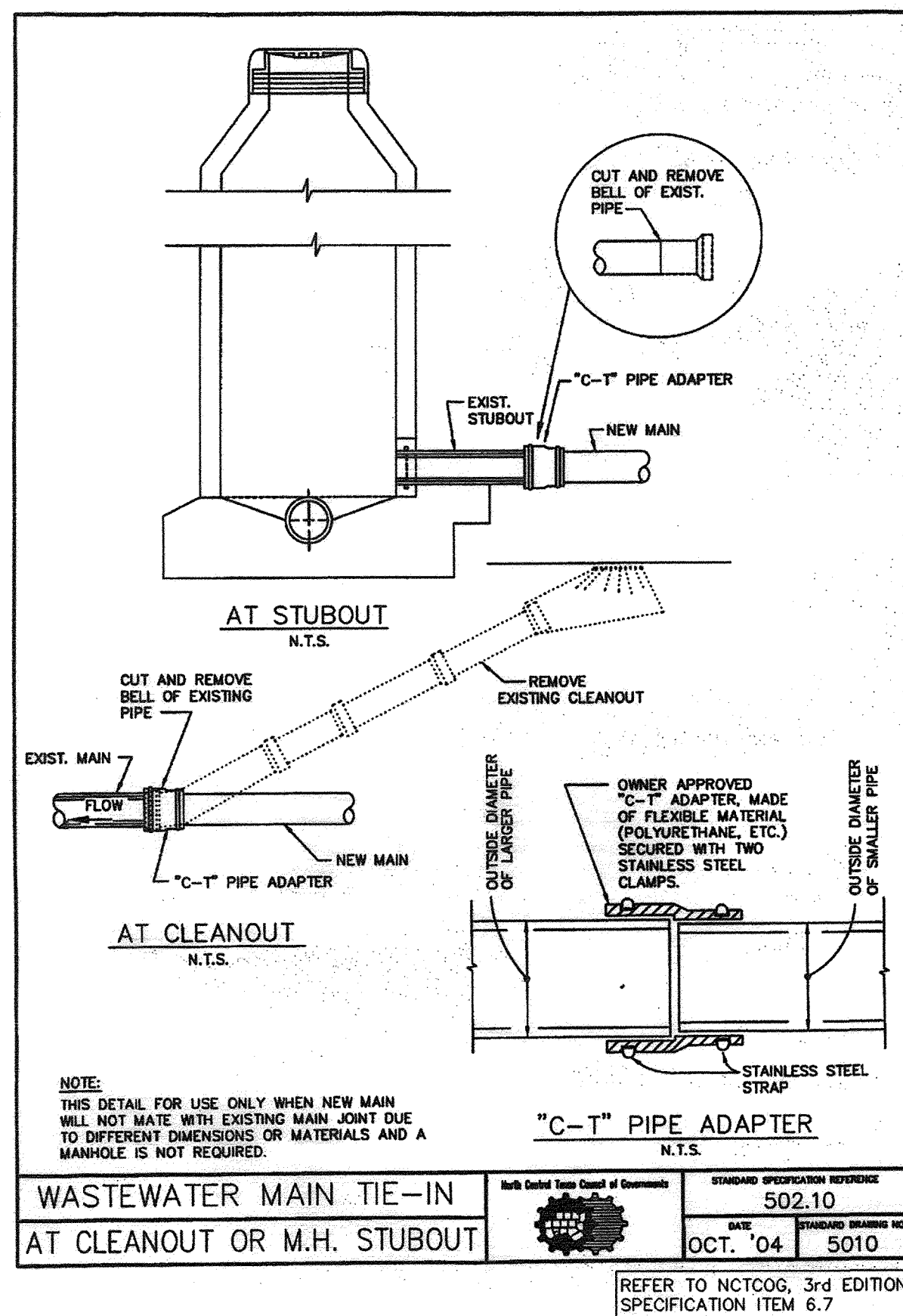
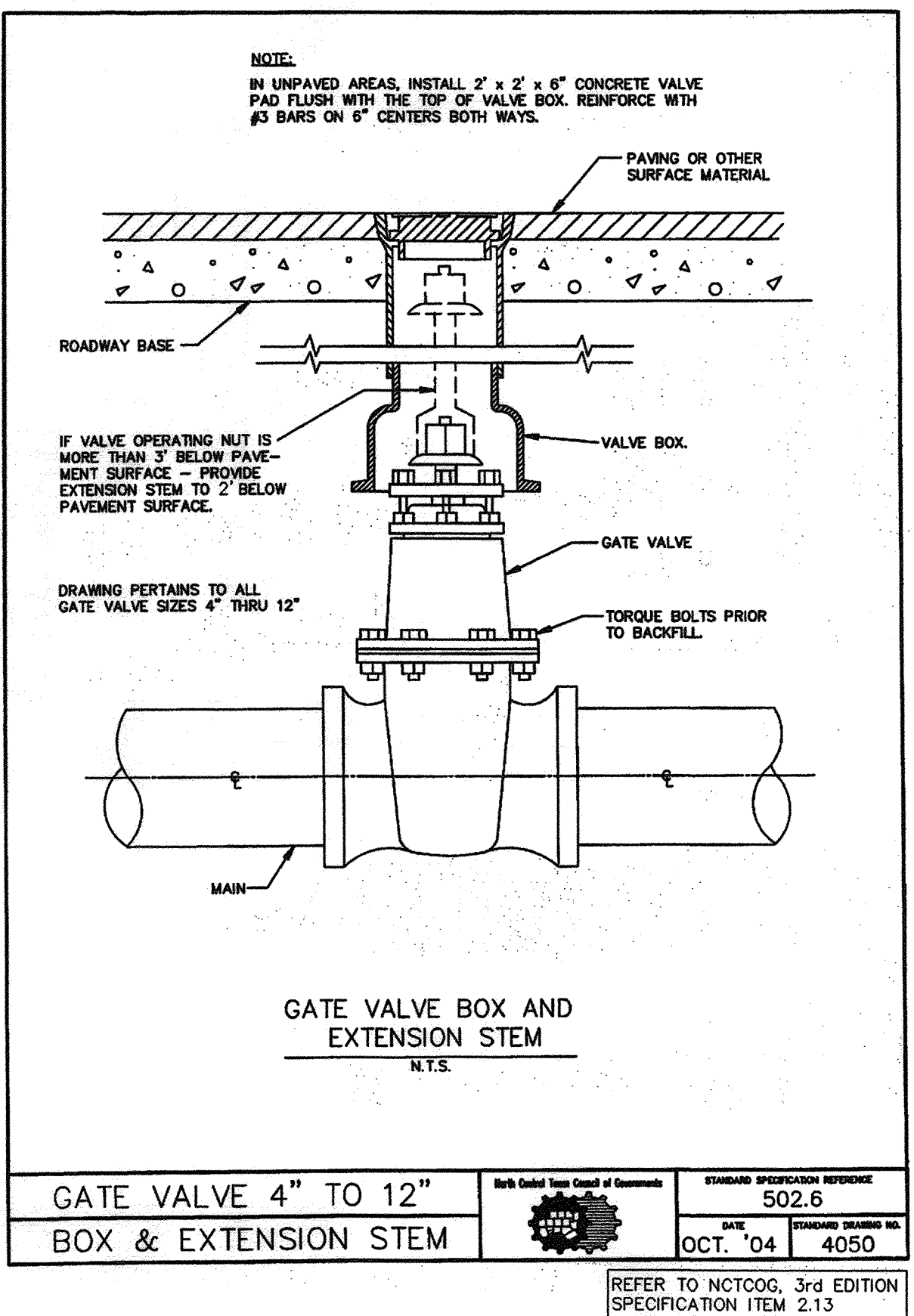


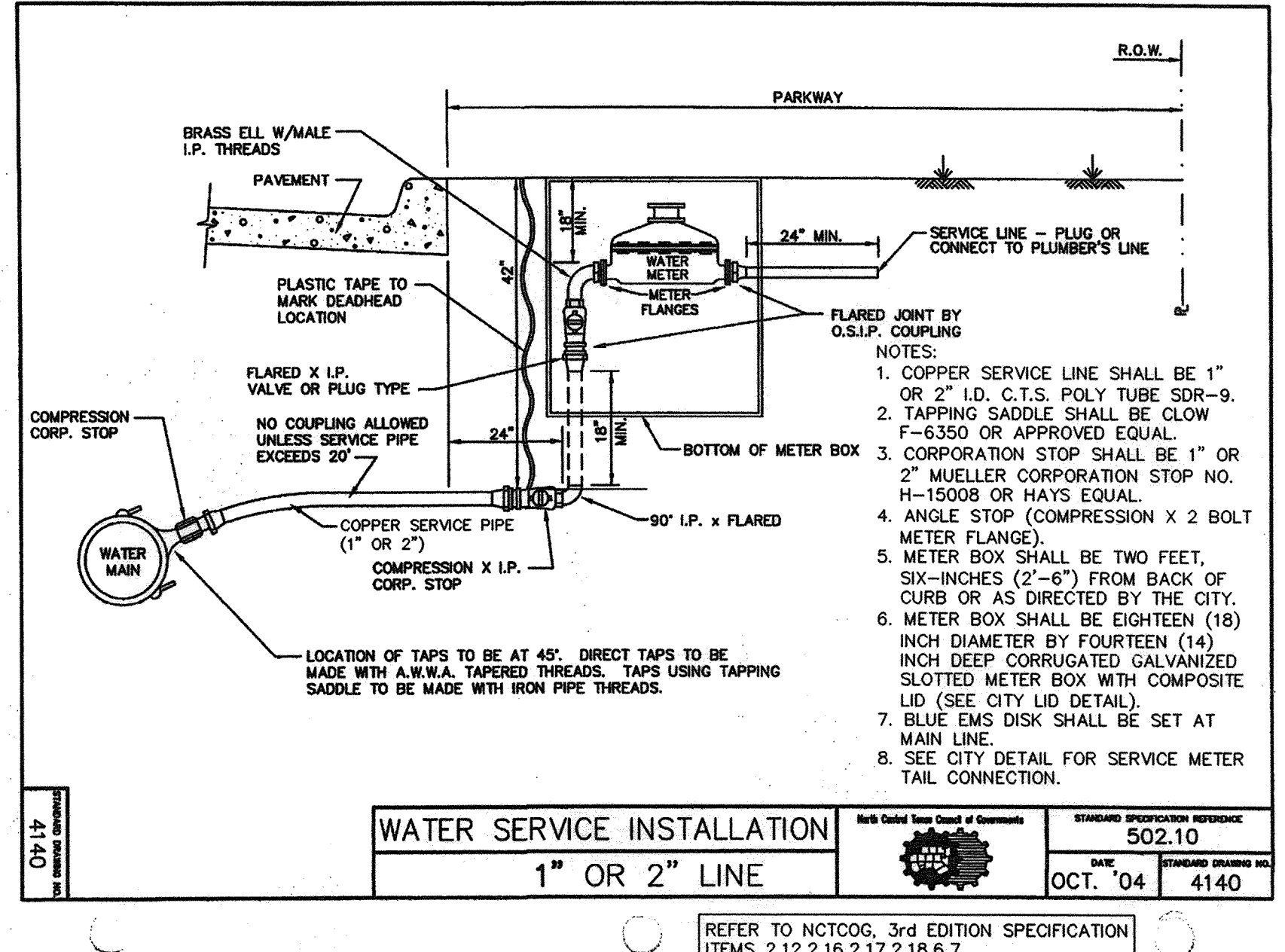
REFER TO NCTCOG, 3rd EDITION SPECIFICATION ITEM 6.7



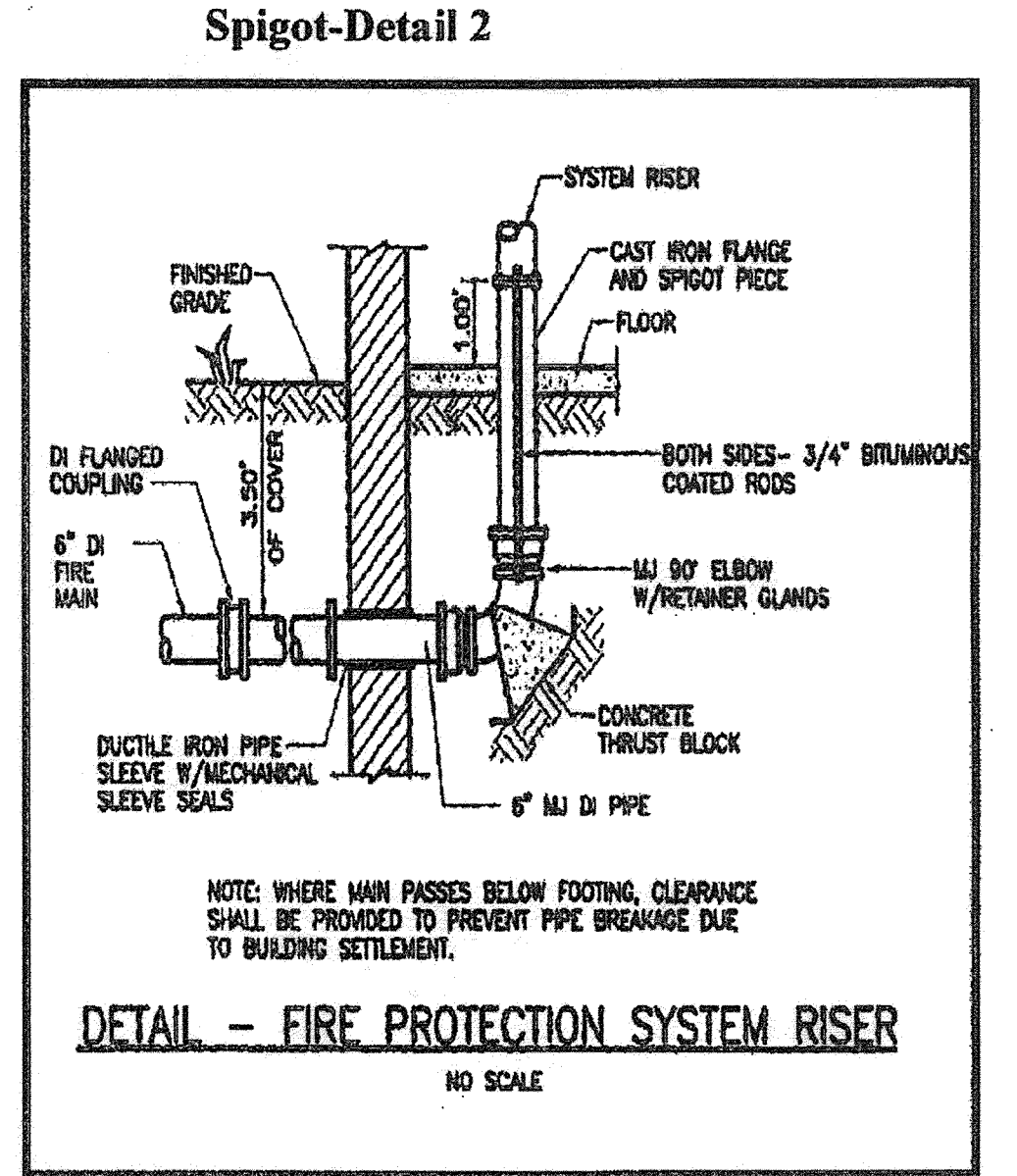
REFER TO NCTCOG, 3rd EDITION SPECIFICATION ITEM 6.7



REFER TO NCTCOG, 3rd EDITION SPECIFICATION ITEM 2.13



NOTE: SEE SHEET C5.03 FOR EMBEDMENT DETAILS

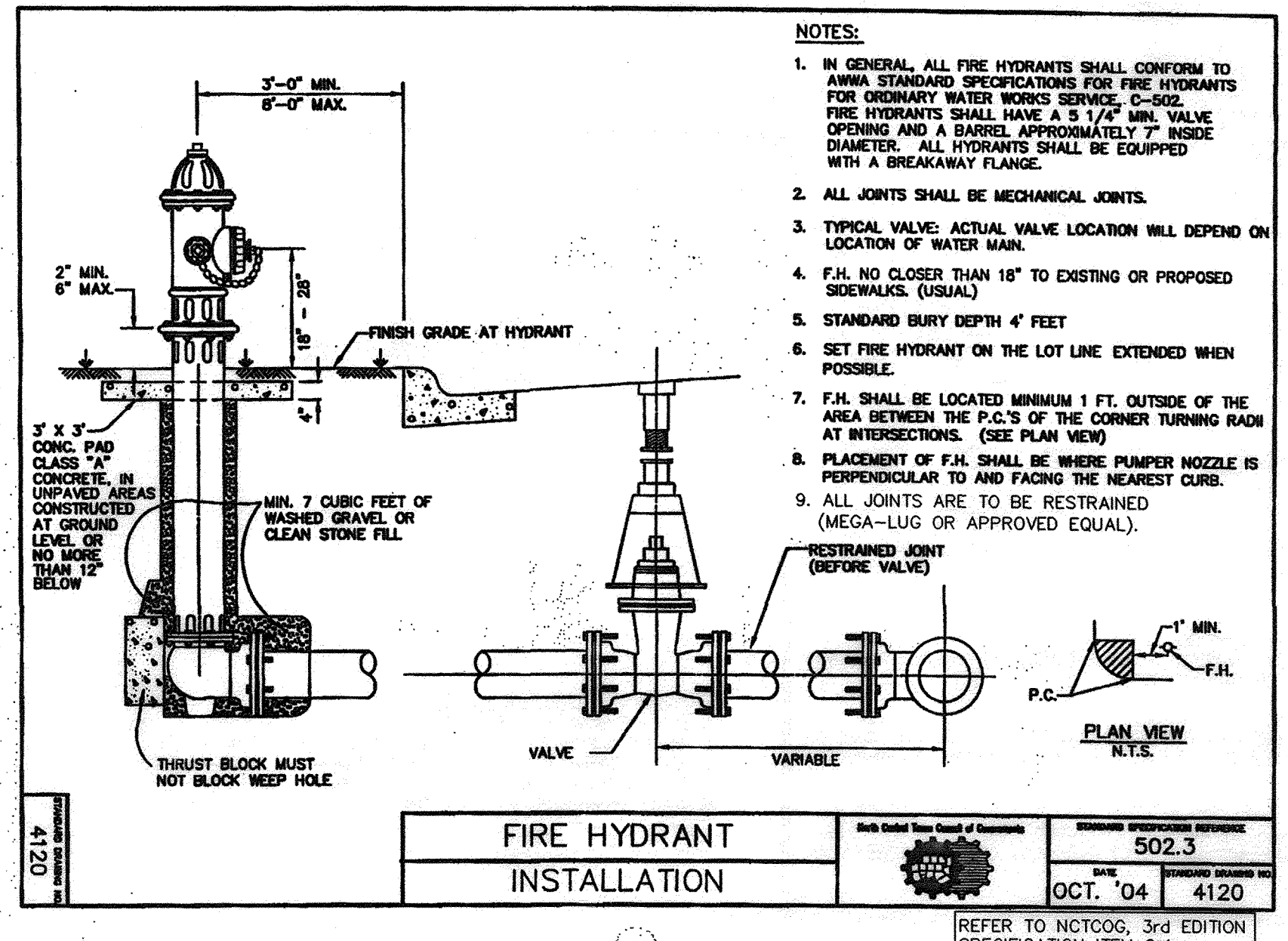
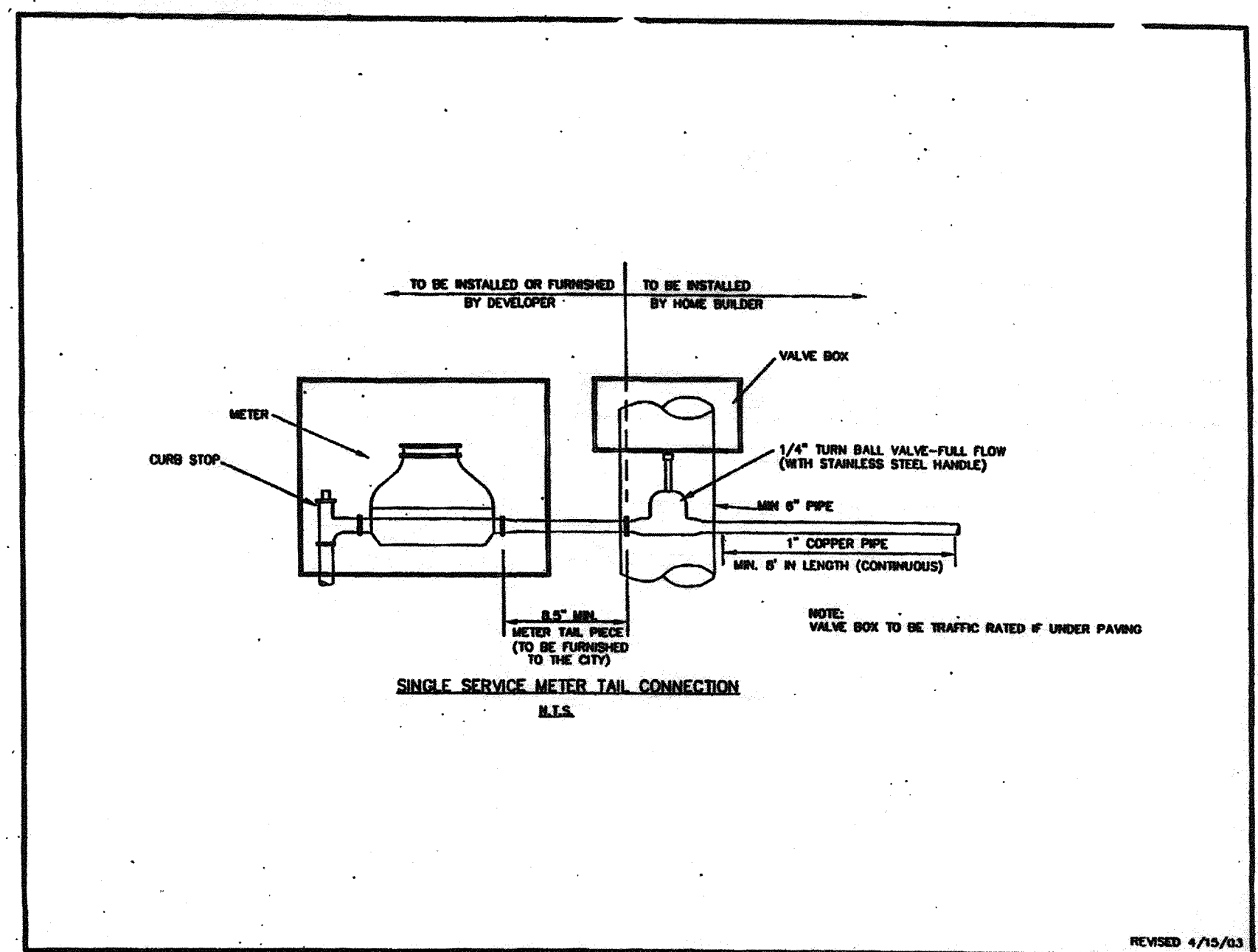


### Thrust Block-Detail 3

TYPE OF FITTING	CROSS W/PLUG	TEE W/PLUG	TEE OR DEAD END
TYPICAL INSULATION			
TYPICAL FITTING			

THRUST BLOCK BEARING AREA (SQ. FT.)

TYPE OF FITTING	90° BEND	45° BEND	1 1/4" OR 2" 1/2" BEND	TEE OR DEAD END
SIZE OF PIPE				
4"	3	2	2	2
6"	4	3	2	3
8"	6	4	3	5
10"	12	8	5	8
12"	16	9	5	12
14"	22	12	6	16
16"	29	16	6	21
18"	38	20	10	26



RECORD DRAWINGS:

IT WAS THE INTENT THAT THE IMPROVEMENTS SHOWN BE CONSTRUCTED ACCORDING TO THESE PLANS AS APPROVED BY THE CITY. THE LINES AND GRADES WERE SET ON THE GROUND FOR CONSTRUCTION ACCORDING TO SAID PLANS. THE CITY INSPECTED THE CONSTRUCTION. THE ENGINEER DID NOT VERIFY LINES OR GRADES AFTER CONSTRUCTION. WE ARE NOT AWARE OF ANY CHANGES OR REVISIONS TO THESE PLANS DURING CONSTRUCTION OTHER THAN THOSE SHOWN. DATE: MARCH 4, 2013.

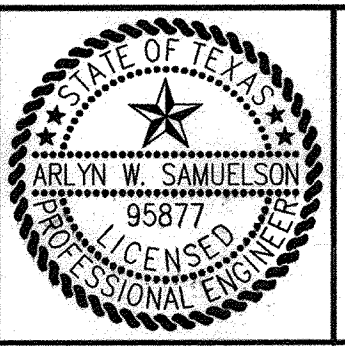
03-04-13	RECORD DRAWINGS		
04-30-12	REVISED DUMPSTER DRAIN		
02-28-12	REVISED WATER TAP		
02-09-12	ADDED DETAILS FOR FIRE LINE		
10-31-11	CITY COMMENTS		
09-19-11			
DESIGN	DRAWN	DATE	PI NUMBER
AWS	WTW	09-01-2011	1483-11-027

**PROJECT INFORMATION**  
LAKESIDE REHABILITATION CENTER  
BLOCK C, LOT 6, HORIZON RIDGE MEDICAL PARK  
CITY OF ROCKWALL, TEXAS  
EDWARD TEAL SURVEY, ABSTRACT NO. 207  
PROPOSED USE: NURSING & REHABILITATION CENTER

**DEVELOPER**  
SMITHERS MERCHANT BUILDERS, LP  
21726 HARDY OAK BOULEVARD  
SAN ANTONIO, TEXAS 78258  
MR. DAVID FRICK  
(210) 479-2500 PHONE  
(210) 479-2507 FAX

THE SEAL APPEARING ON THIS DOCUMENT WAS AUTHORIZED BY ARLYN W. SAMUELSON, P.E. 98071 ON 09-01-2011 ALTERATION OF A SEALED DOCUMENT WITHOUT PROPER NOTIFICATION TO THE RESPONSIBLE ENGINEER IS AN OFFENSE UNDER THE TEXAS ENGINEERING PRACTICE ACT.

*Arlyn W. Samuelson 09-01-11*



**POGUE**  
ENGINEERING & DEVELOPMENT COMPANY, INC.

1512 BRAY CENTRAL DRIVE  
SUITE 100  
MCKINNEY, TEXAS 75069

(214) 544-8880 PHONE  
(214) 544-8882 FAX  
www.PogueEngineering.com

**WATER & SANITARY SEWER DETAILS**

LAKESIDE REHABILITATION CENTER  
BLOCK C, LOT 6, HORIZON RIDGE MEDICAL PARK  
EDWARD TEAL SURVEY, ABSTRACT NO. 207  
CITY OF ROCKWALL, TEXAS

SHEET NO. C6.02