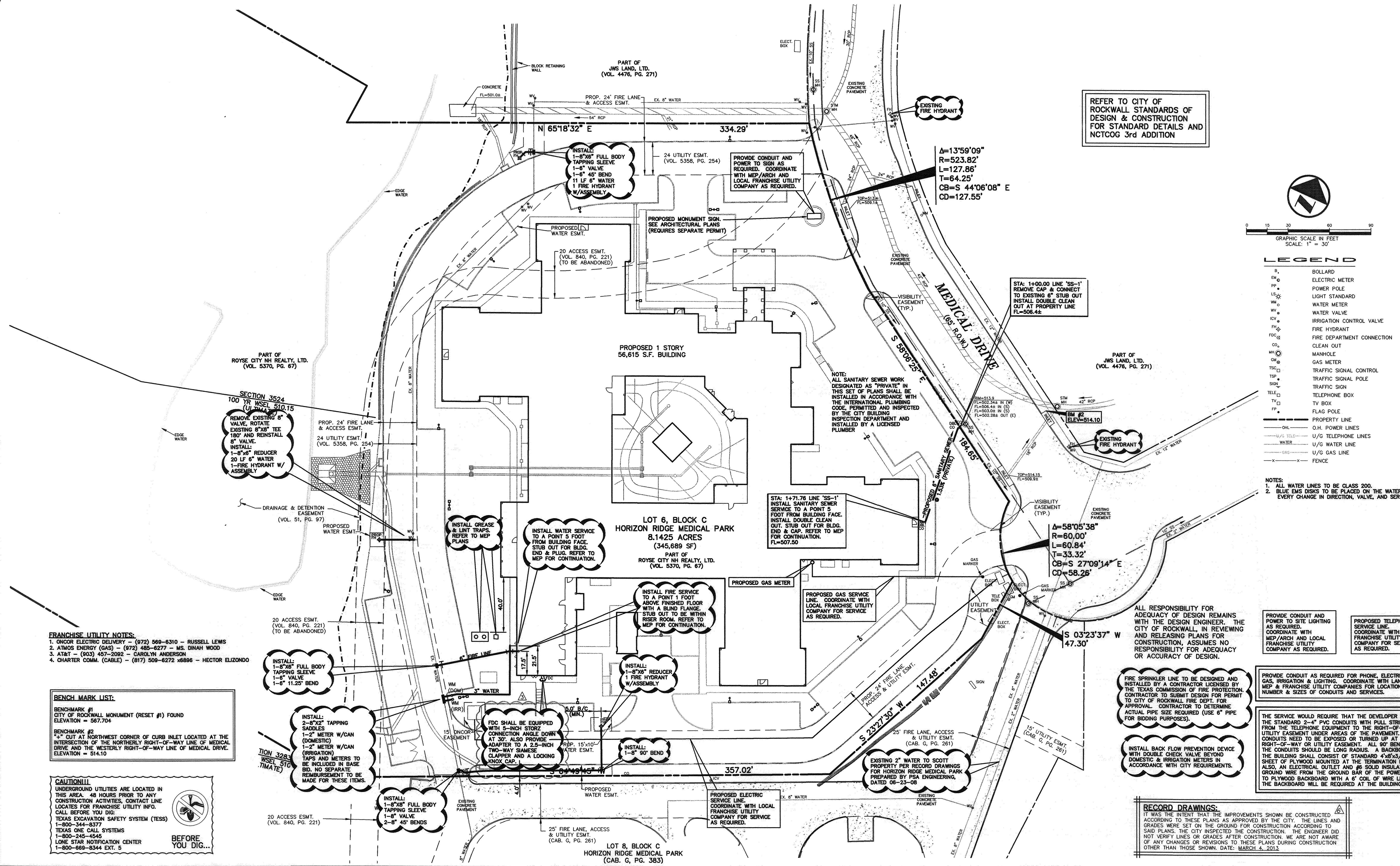
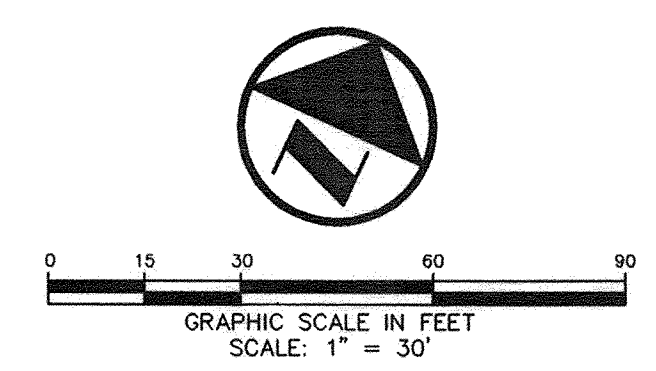


SWANBERG 05/17/2013 1:58PM NURSING HOME CIVILS (DWG) 1483-11-032-WATER AND SANITARY SEWER PLAN.DWG
LAKESIDE REHABILITATION CENTER
© POGUE ENGINEERING & DEVELOPMENT COMPANY, INC. 2010. ALL RIGHTS RESERVED. THE ENGINEERING DESIGN, DETAIL AND ENGINEERING DRAWINGS FOR THIS PROJECT AND/OR OVERALL PROJECT ARE THE LEGAL PROPERTY OF POGUE ENGINEERING & DEVELOPMENT COMPANY, INC. THEIR USE FOR REPRODUCTION, CONSTRUCTION, OR DISTRIBUTION IS PROHIBITED UNLESS AUTHORIZED IN WRITING BY POGUE ENGINEERING & DEVELOPMENT COMPANY, INC.

LAKESIDE REHABILITATION CENTER
TEXAS BOARD OF PROFESSIONAL ENGINEERS, CERTIFICATE OF REGISTRATION #00481
TEXAS BOARD OF PROFESSIONAL LAND SURVEYING, CERTIFICATE OF REGISTRATION 100481-00



REFER TO CITY OF ROCKWALL STANDARDS OF DESIGN & CONSTRUCTION FOR STANDARD DETAILS AND NCTCOG 3rd ADDITION



LEGEND

- B BOLLARD
- EM ELECTRIC METER
- PP POWER POLE
- LS LIGHT STANDARD
- WM WATER METER
- WV WATER VALVE
- ICV IRRIGATION CONTROL VALVE
- FDH FIRE DEPARTMENT CONNECTION
- CO CLEAN OUT
- MH MANHOLE
- GM GAS METER
- TSC TRAFFIC SIGNAL CONTROL
- TSP TRAFFIC SIGNAL POLE
- SN SIGN
- TELE TELEPHONE BOX
- TV TV BOX
- FP FLAG POLE
- PROPERTY LINE
- O.H. POWER LINES
- U/G TELEPHONE LINES
- U/G WATER LINE
- U/G GAS LINE
- X-X- FENCE

- NOTES:
1. ALL WATER LINES TO BE CLASS 200.
 2. BLUE EMB DISKS TO BE PLACED ON THE WATER LINE OF EVERY CHANGE IN DIRECTION, VALVE, AND SERVICES.

FRANCHISE UTILITY NOTES:

1. ONCOR ELECTRIC DELIVERY - (972) 569-6310 - RUSSELL LEWIS
2. ATMOS ENERGY (GAS) - (972) 486-8277 - MS. DINAH WOOD
3. AT&T - (903) 457-2082 - CAROLYN ANDERSON
4. CHARTER COMM. (CABLE) - (817) 509-6272 x8986 - HECTOR ELIJONDO

BENCH MARK LIST:

BENCHMARK #1
CITY OF ROCKWALL MONUMENT (RESET #1) FOUND
ELEVATION = 567.704

BENCHMARK #2
"4" CUT AT NORTHWEST CORNER OF CURB INLET LOCATED AT THE INTERSECTION OF THE NORTHERLY RIGHT-OF-WAY LINE OF MEDICAL DRIVE AND THE WESTERLY RIGHT-OF-WAY LINE OF MEDICAL DRIVE.
ELEVATION = 514.10

CAUTION!!!
UNDERGROUND UTILITIES ARE LOCATED IN THIS AREA. 48 HOURS PRIOR TO ANY CONSTRUCTION ACTIVITIES, CONTACT LINE LOCATES FOR FRANCHISE UTILITY INFO. CALL BEFORE YOU DIG.
TEXAS EXCAVATION SAFETY SYSTEM (TESS)
1-800-344-8377
TEXAS ONE CALL SYSTEMS
1-800-245-4545
LONE STAR NOTIFICATION CENTER
1-800-666-8344 EXT. 5

BEFORE YOU DIG...

ALL RESPONSIBILITY FOR ADEQUACY OF DESIGN REMAINS WITH THE DESIGN ENGINEER. THE CITY OF ROCKWALL IN REVIEWING AND RELEASING PLANS FOR CONSTRUCTION, ASSUMES NO RESPONSIBILITY FOR ADEQUACY OR ACCURACY OF DESIGN.

PROVIDE CONDUIT AND POWER TO SITE LIGHTING AS REQUIRED. COORDINATE WITH LOCAL FRANCHISE UTILITY COMPANY AS REQUIRED.

PROPOSED TELEPHONE SERVICE LINE. COORDINATE WITH LOCAL FRANCHISE UTILITY COMPANY FOR SERVICE AS REQUIRED.

FIRE SPRINKLER LINE TO BE DESIGNED AND INSTALLED BY A CONTRACTOR LICENSED BY THE TEXAS COMMISSION OF FIRE PROTECTION. CONTRACTOR TO SUBMIT DESIGN FOR PERMIT TO CITY OF ROCKWALL FIRE DEPT. FOR APPROVAL. CONTRACTOR TO DETERMINE ACTUAL PIPE SIZE REQUIRED (USE 6" PIPE FOR BIDDING PURPOSES).

PROVIDE CONDUIT AS REQUIRED FOR PHONE, ELECTRICAL, GAS, IRRIGATION & LIGHTING. COORDINATE WITH LANDSCAPE, MEP & FRANCHISE UTILITY COMPANIES FOR LOCATIONS NUMBER & SIZES OF CONDUITS AND SERVICES.

INSTALL BACK FLOW PREVENTION DEVICE WITH DOUBLE CHECK VALVE BEYOND DOMESTIC & IRRIGATION METERS IN ACCORDANCE WITH CITY REQUIREMENTS.

THE SERVICE WOULD REQUIRE THAT THE DEVELOPER PROVIDE THE STANDARD 2-4" PVC CONDUITS WITH PULL STRINGS FROM THE TELEPHONE EQUIPMENT TO THE RIGHT-OF-WAY OR UTILITY EASEMENT UNDER AREAS OF THE PAVEMENT. PVC CONDUITS NEED TO BE EXPOSED OR TURNED UP AT THE RIGHT-OF-WAY OR UTILITY EASEMENT. ALL 90° BENDS IN THE CONDUITS SHOULD BE LONG RADIUS. A BACKBOARD IN THE BUILDING SHALL CONSIST OF STANDARD 4"x8"x1/4" SHEET OF PLYWOOD MOUNTED AT THE TERMINATION POINT. ALSO, AN ELECTRICAL OUTLET AND #6 SOLID INSULATED GROUND WIRE FROM THE GROUND BAR OF THE POWER PANEL TO PLYWOOD BACKBOARD WITH A 6' COIL OF WIRE LEFT AT THE BACKBOARD WILL BE REQUIRED AT THE BUILDING.

RECORD DRAWINGS:
IT WAS THE INTENT THAT THE IMPROVEMENTS SHOWN BE CONSTRUCTED ACCORDING TO THESE PLANS AS APPROVED BY THE CITY. THE LINES AND GRADES WERE SET ON THE GROUND FOR CONSTRUCTION ACCORDING TO SAID PLANS. THE CITY INSPECTED THE CONSTRUCTION. THE ENGINEER DID NOT VERIFY LINES OR GRADES AFTER CONSTRUCTION. WE ARE NOT AWARE OF ANY CHANGES OR REVISIONS TO THESE PLANS DURING CONSTRUCTION OTHER THAN THOSE SHOWN. DATE: MARCH 4, 2013.

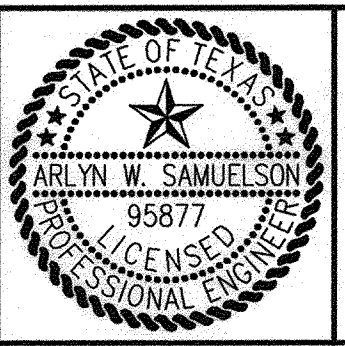
03-04-13	RECORD DRAWINGS		
04-30-12	REVISED DUMPSTER DRAIN		
02-28-12	REVISED WATER TAP		
02-09-12	ADDED DETAILS FOR FIRE LINE		
10-31-11	CITY COMMENTS		
09-19-11			
DESIGN	DRAWN	DATE	PI NUMBER
AWS	WTW	09-01-2011	1483-11-027

PROJECT INFORMATION
LAKESIDE REHABILITATION CENTER
BLOCK C, LOT 6, HORIZON RIDGE MEDICAL PARK
CITY OF ROCKWALL, TEXAS
EDWARD TEAL SURVEY, ABSTRACT NO. 207
PROPOSED USE: NURSING & REHABILITATION CENTER

DEVELOPER
SMITHERS MERCHANT BUILDERS, LP
21726 HARDY OAK BOULEVARD
SAN ANTONIO, TEXAS 78258
MR. DAVID FRICK
(210) 479-2500 PHONE
(210) 479-2507 FAX

THE SEAL APPEARING ON THIS DOCUMENT WAS AUTHORIZED BY ARLYN W. SAMUELSON, P.E. 95871 ON 09-01-2011. ALTERATION OF A SEALED DOCUMENT WITHOUT PROPER NOTIFICATION TO THE RESPONSIBLE ENGINEER IS AN OFFENSE UNDER THE TEXAS ENGINEERING PRACTICE ACT.

Arlyn W. Samuelson 09-01-11



POGUE
ENGINEERING & DEVELOPMENT COMPANY, INC.

1512 BRAY CENTRAL DRIVE
SUITE 100
MCKINNEY, TEXAS 75069

(214) 544-8880 PHONE
(214) 544-8882 FAX
www.PogueEngineering.com

WATER & SANITARY SEWER PLAN
LAKESIDE REHABILITATION CENTER
BLOCK C, LOT 6, HORIZON RIDGE MEDICAL PARK
EDWARD TEAL SURVEY, ABSTRACT NO. 207
CITY OF ROCKWALL, TEXAS

SHEET NO.
C6.01