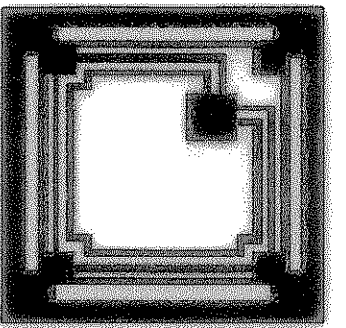


THE SEAL APPEARING ON THIS DOCUMENT WAS AUTHORIZED BY JOE T. MILLIGAN, P.E. NO. 35154 ON 08/04/05

Revisions:



HALLUM ARCHITECTS, INC.

2501 PARKVIEW DRIVE SUITE 430  
FORT WORTH, TEXAS 76102  
PHONE: 817.332.2422 FAX: 817.338.1949  
email: info@hallumarch.com

Rockwall Lakeside Church of Christ

New Auditorium and Education Facilities  
465 North FM 549, Rockwall, Texas 75087

FUTURE SANITARY SEWER  
PLAN & PROFILES

**RECORD DRAWING**  
(ALL REVISIONS ARE BASED UPON NOTES AND COMMENTS ON PREVIOUS DRAWING)  
CONSTRUCTION CO., LTD.

Date: 8-4-2005

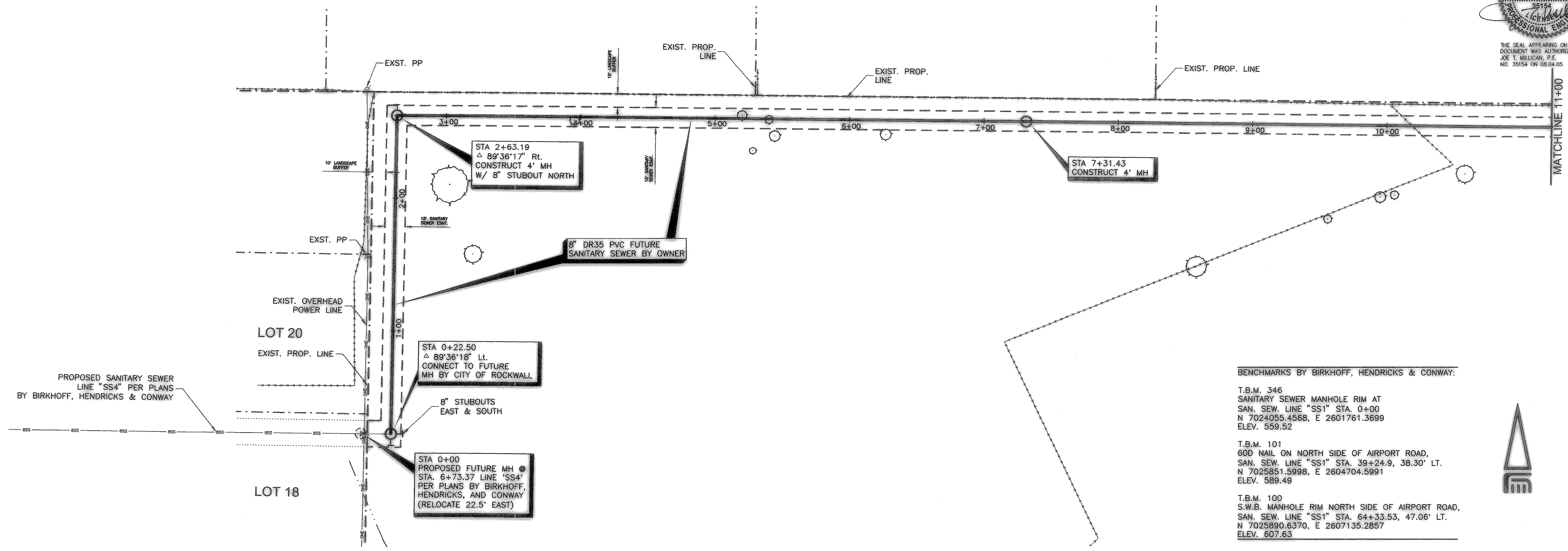
Scale: H:1"=40'  
V:1"=5'

Drawn: AC

Job: 2002-10

Sheet Number:

C3.3



BENCHMARKS BY BIRKHOFF, HENDRICKS & CONWAY:

T.B.M. 346  
SANITARY SEWER MANHOLE RIM AT  
SAN. SEW. LINE "SS1" STA. 0+00  
N 7024055.4568, E 2601761.3699  
ELEV. 559.52

T.B.M. 101  
60D NAIL ON NORTH SIDE OF AIRPORT ROAD,  
SAN. SEW. LINE "SS1" STA. 39+24.9, 38.30' LT.  
N 7025851.5998, E 2604704.5991  
ELEV. 589.49

T.B.M. 100  
S.W.B. MANHOLE RIM NORTH SIDE OF AIRPORT ROAD,  
SAN. SEW. LINE "SS1" STA. 64+33.53, 47.06' LT.  
N 7025890.6370, E 2607135.2857  
ELEV. 607.63

