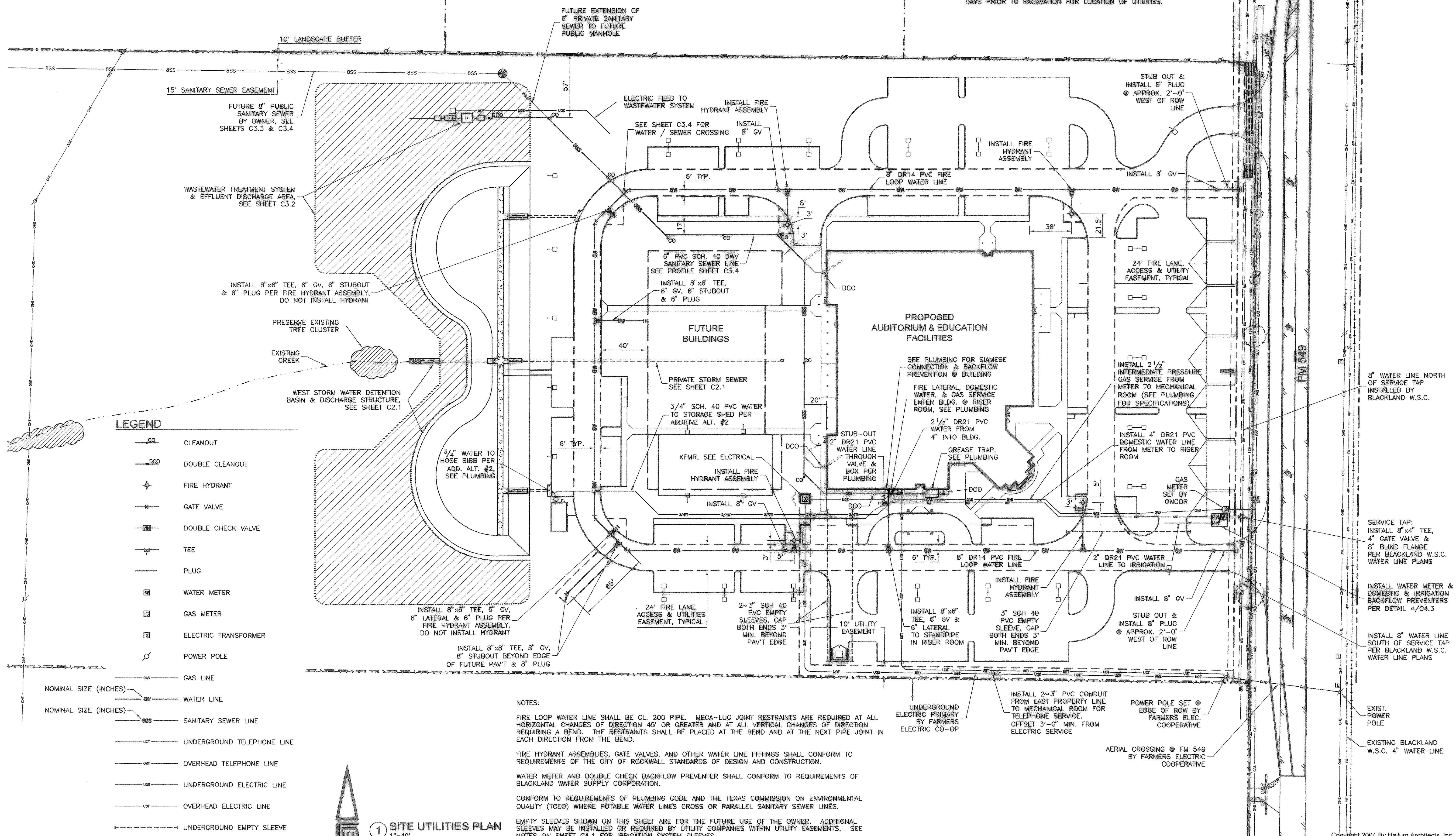


THE SEAL APPEARING ON THIS DOCUMENT WAS AUTHORIZED BY JOE T. MILLICAN, P.E. NO. 35154 ON 08.04.05

WARNING: LOCATIONS OF EXISTING UTILITIES SHOWN ON THIS AND OTHER SHEETS ARE BASED ON FIELD SURVEYS OF SURFACE FEATURES AND INFORMATION PROVIDED BY THE UTILITY COMPANIES. THE COMPLETENESS AND ACCURACY OF THIS INFORMATION IS NOT GUARANTEED. THE CONTRACTOR IS RESPONSIBLE FOR VERIFYING THE LOCATION OF ALL UNDERGROUND UTILITIES AND STRUCTURES, AND FOR PROTECTING THEM DURING CONSTRUCTION. CONTACT DIG-TESS AT 1-800-DIG-TESS AT LEAST TWO WORKING DAYS PRIOR TO EXCAVATION FOR LOCATION OF UTILITIES.



- LEGEND**
- CLEANOUT
 - DOUBLE CLEANOUT
 - FIRE HYDRANT
 - GATE VALVE
 - DOUBLE CHECK VALVE
 - TEE
 - PLUG
 - WATER METER
 - GAS METER
 - ELECTRIC TRANSFORMER
 - POWER POLE
 - GAS LINE
 - WATER LINE
 - SANITARY SEWER LINE
 - UNDERGROUND TELEPHONE LINE
 - OVERHEAD TELEPHONE LINE
 - UNDERGROUND ELECTRIC LINE
 - OVERHEAD ELECTRIC LINE
 - UNDERGROUND EMPTY SLEEVE

1 SITE UTILITIES PLAN
1"=40'

NOTES:

FIRE LOOP WATER LINE SHALL BE CL. 200 PIPE. MEGA-LUG JOINT RESTRAINTS ARE REQUIRED AT ALL HORIZONTAL CHANGES OF DIRECTION 45° OR GREATER AND AT ALL VERTICAL CHANGES OF DIRECTION REQUIRING A BEND. THE RESTRAINTS SHALL BE PLACED AT THE BEND AND AT THE NEXT PIPE JOINT IN EACH DIRECTION FROM THE BEND.

FIRE HYDRANT ASSEMBLIES, GATE VALVES, AND OTHER WATER LINE FITTINGS SHALL CONFORM TO REQUIREMENTS OF THE CITY OF ROCKWALL STANDARDS OF DESIGN AND CONSTRUCTION.

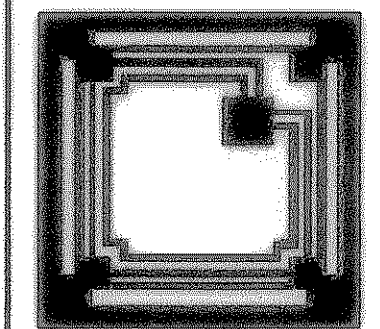
WATER METER AND DOUBLE CHECK BACKFLOW PREVENTER SHALL CONFORM TO REQUIREMENTS OF BLACKLAND WATER SUPPLY CORPORATION.

CONFORM TO REQUIREMENTS OF PLUMBING CODE AND THE TEXAS COMMISSION ON ENVIRONMENTAL QUALITY (TCEQ) WHERE POTABLE WATER LINES CROSS OR PARALLEL SANITARY SEWER LINES.

EMPTY SLEEVES SHOWN ON THIS SHEET ARE FOR THE FUTURE USE OF THE OWNER. ADDITIONAL SLEEVES MAY BE INSTALLED OR REQUIRED BY UTILITY COMPANIES WITHIN UTILITY EASEMENTS. SEE NOTES ON SHEET C4.1 FOR IRRIGATION SYSTEM SLEEVES.

Revisions:

07.22.04:	DOMESTIC WATER SERVICE.
-----------	-------------------------



HALLUM ARCHITECTS, INC.
 2501 PARKVIEW DRIVE SUITE 430
 FORT WORTH, TEXAS 76102
 PHONE: 817.332.2422 FAX: 817.338.1949
 email: info@hallumarch.com

Rockwall Lakeside Church of Christ
 New Auditorium and Education Facilities
 485 North FM 549, Rockwall, Texas 75087

SITE UTILITIES PLAN
RECORD DRAWING
 (ALL REVISIONS ARE BASED UPON NOTES AND COMMENTS SUBMITTED BY FRANK DALE CONSTRUCTION CO., LTD.)

Date:	8-4-2005
Scale:	1"=40'
Drawn:	FMI
Job:	2002-10
Sheet Number:	C3.1