

DRAINAGE AREA CALCULATIONS

UNDEVELOPED					
DRAINAGE AREA No.	C	I in/hr	A acres	Q100 cfs	Q100 detention
1	0.35	8.2	2.03	5.76	
2	0.35	8.2	4.98	14.29	
3	0.35	8.2	0.11	0.48	
4	0.35	8.2	0.91	2.61	
5	0.35	8.2	0.23	0.57	
6	0.35	8.2	0.10	0.28	
TOTAL ONSITE			24.00		
DRAINAGE AREAS 1 & 3				7.09	
DRAINAGE AREAS 2 & 4				16.90	

DEVELOPED					
DRAINAGE AREA No.	C	I in/hr	A acres	Q100 cfs	Q100 detention w/
1	0.8	9.8	2.03	15.74	5.61
2	0.8	9.8	4.98	39.04	7.05
3	0.8	9.8	0.11	1.32	1.32
4	0.8	9.8	0.91	7.13	7.13
5	0.8	9.8	0.23	1.57	1.57
6	0.8	9.8	0.10	0.75	0.75
TOTAL ONSITE			84.81	23.43	
DRAINAGE AREAS 1 & 3				6.93	
DRAINAGE AREAS 2 & 4				14.18	

NOTE: REFER TO SHEET C2.3 FOR DETAILED DRAINAGE CALCULATIONS AND DETENTION BASIN DISCHARGE TABLES.

BENCHMARKS

BENCHMARKS ESTABLISHED BY ROCKWALL SURVEYING CO., INC. (972) 772-5434.

B.M. #1: SOUTHWESTERN BELL TELEPHONE MANHOLE RIM @ NORTHWEST CORNER OF FM 549 & AIRPORT ROAD ELEV = 607.78

B.M. #2: CITY OF ROCKWALL MONUMENT R002 @ NORTHWEST CORNER OF 1-30 NORTH SERVICE ROAD & FM 549 ELEV = 609.39

B.M. #3: U.S.G.S. MONUMENT STAMPED "F 927 1946" @ NORTHEAST CORNER OF FM 549 & MISSOURI-KANSAS-TEXAS RAILROAD ELEV = 613.03

LEGEND

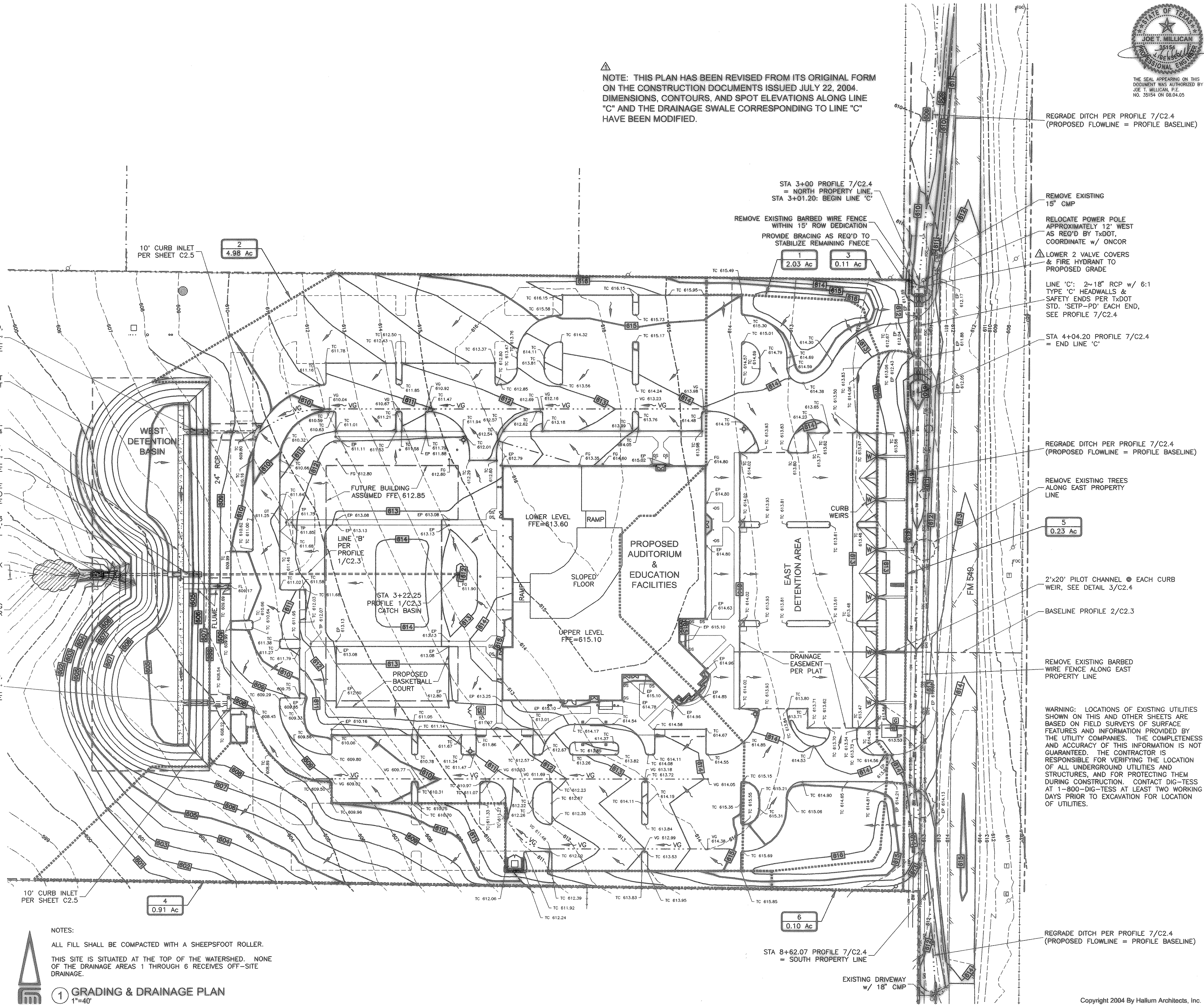
- No. 4 2.13 Ac DRAINAGE AREA REFERENCE
- ACRES
- DRAINAGE AREA BOUNDARY
- DRAINAGE EASEMENT
- FLOW DIRECTION
- ▽ CURB WEIR
- 601 FINISH GRADE (1' CONTOUR INTERVAL)
- 605 FINISH GRADE (5' CONTOUR INTERVAL)
- 601 EXISTING GRADE (1' CONTOUR INTERVAL)
- 605 EXISTING GRADE (5' CONTOUR INTERVAL)
- FFE FINISH FLOOR ELEVATION
- TC TOP OF CURB
- EP EDGE OF PAVEMENT
- TP TOP OF PAVEMENT
- GT GUTTER FLOWLINE
- FL FLOWLINE
- VG VALLEY GUTTER
- FG FINISH GRADE
- DS DOWNSPOUT

NOTES:

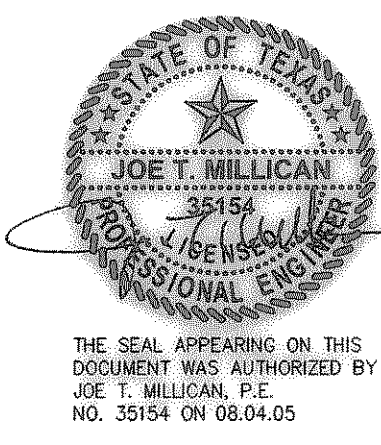
ALL FILL SHALL BE COMPACTED WITH A SHEEPSFOOT ROLLER.

THIS SITE IS SITUATED AT THE TOP OF THE WATERSHED. NONE OF THE DRAINAGE AREAS 1 THROUGH 6 RECEIVES OFF-SITE DRAINAGE.

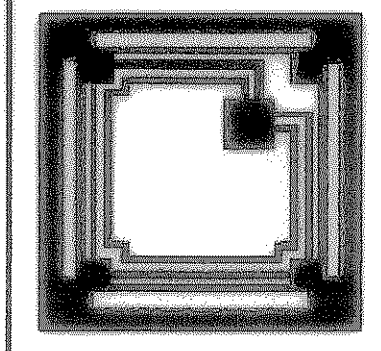
1 GRADING & DRAINAGE PLAN
1"=40'



NOTE: THIS PLAN HAS BEEN REVISED FROM ITS ORIGINAL FORM ON THE CONSTRUCTION DOCUMENTS ISSUED JULY 22, 2004. DIMENSIONS, CONTOURS, AND SPOT ELEVATIONS ALONG LINE "C" AND THE DRAINAGE SWALE CORRESPONDING TO LINE "C" HAVE BEEN MODIFIED.



Revisions:
1 REGRADE LINE "C" ISSUED 04/26/2005



HALLUM ARCHITECTS, INC.
2501 PARKVIEW DRIVE SUITE 430
FORT WORTH, TEXAS 76102
PHONE: 817.332.2422 FAX: 817.338.1949
email: info@hallumarch.com

Rockwall Lakeside Church of Christ
New Auditorium and Education Facilities
485 North FM 549, Rockwall, Texas 75087

GRADING & DRAINAGE PLAN
RECORD DRAWING
(ALL REVISIONS ARE BASED UPON NOTES AND COMMUNICATIONS FROM THE CLIENT AND CONSTRUCTION CO., LTD.)

Date: 8-4-2005
Scale: 1"=40'
Drawn: JDG
Job: 2002-10
Sheet Number:
C2.1