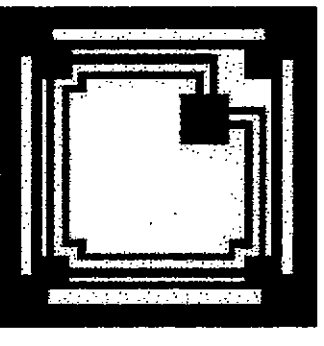


Revisions:



**HALLUM ARCHITECTS, INC.**  
 2501 PARKVIEW DRIVE SUITE 430  
 FORT WORTH, TEXAS 76102  
 PHONE: 817.332.2422 FAX: 817.338.1949  
 email: info@hallumarch.com

**Rockwall Lakeside Church of Christ**  
**New Auditorium and Education Facilities**  
 485 North FM 549, Rockwall, Texas 75087

**SITE PAVING PLAN**

Date: 7-22-2004  
 Scale: 1"=40'  
 Drawn: FMI  
 Job: 2002-10  
 Sheet Number:  
**C1.1**

**NOTES:**

DIMENSIONS SHOWN ON THIS SHEET ARE TO BACK OF CURB WHERE CURBS ARE INDICATED, AND TO EDGE OF PAVEMENT OTHERWISE. TYPICAL WIDTH OF FIRE LANES IS 24'-0" FROM FACE-TO-FACE OF CURBS.

SMALL CURVES SHOWN, BUT NOT DIMENSIONED, AT ISLANDS, PARKING STALLS, AND OTHER LOCATIONS ON THIS SHEET SHALL HAVE A RADIUS OF 1'-6" TO THE BACK OF CURB.

LIGHT POLE LOCATIONS ARE DIMENSIONED ON THIS SHEET TO COINCIDE WITH PARKING STALL STRIPES SO AS NOT TO REDUCE MINIMUM PARKING STALL DEPTHS AND CURB OVERHANG CLEARANCES REQUIRED BY THE CITY OF ROCKWALL. SEE SHEET E001 FOR LIGHT POLE BASE DETAIL.

ON-SITE VEHICULAR PAVEMENT AND DRIVE APPROACHES SHALL BE 6" THICK 3600 PSI CONCRETE WITH #3 BARS AT 24" O.C.E.W. & LIGHT BROOM FINISH. SEE DETAILS 11 AND 12 ON SHEET C1.3. FORM 6" INTEGRAL CURBS PER DETAIL 1/C1.3 AT PERIMETER EXCEPT WHERE NOTED OTHERWISE.

CONCRETE WITHIN FIRE LANES SHALL BE 4200 PSI (6.5-SACK MIX) IF HAND POURED, OR 3600 PSI (6-SACK MIX) IF SLIP-FORMED.

SIDEWALKS SHALL BE 4" THICK 3000 PSI CONCRETE WITH #3 BARS AT 24" O.C.E.W. & LIGHT BROOM FINISH. SEE DETAIL 5 ON SHEET C1.3. REFER TO ARCHITECTURAL PLANS FOR SIDEWALK DIMENSIONS AT BUILDING ENTRANCES.

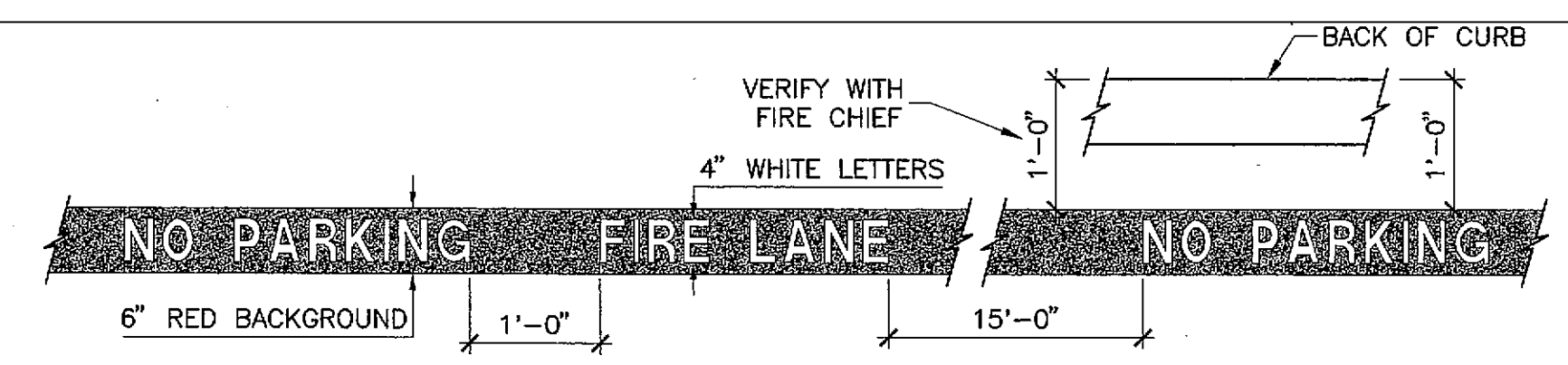
REFER TO DETAILS 2, 3, & 4 ON SHEET C1.3 FOR TYPICAL CONCRETE PAVEMENT JOINTING. PARKING LOT AND DRIVEWAY EXPANSION JOINTS ARE LABELED "EJ" AND ISOLATION JOINTS ARE LABELED "IJ" ON THIS SHEET. UNLABELED PARKING LOT AND DRIVEWAY JOINTS ARE CONSTRUCTION JOINTS. PLACE ISOLATION JOINTS WHERE LIGHT POLE BASES PENETRATE PARKING LOT. SEE DETAIL 5/C1.3 FOR SIDEWALK JOINTING NOTES.

BASKETBALL COURT SHALL BE POST TENSIONED CONCRETE PER DETAILS 8 AND 13, AND NOTES ON SHEET C1.3.

STREET WIDENING NECESSARY FOR THE LEFT TURN LANE AT FM 549 SHALL BE 2" TYPE "D" HMAC OVER 4" TYPE "B" HMAC OVER 6" LIME STABILIZED SUBGRADE. THE 2" HMAC SURFACE COURSE SHALL OVERLAY THE ENTIRE FINISHED WIDTH OF FM 549 INCLUDING PROPOSED AND EXISTING PAVEMENT.

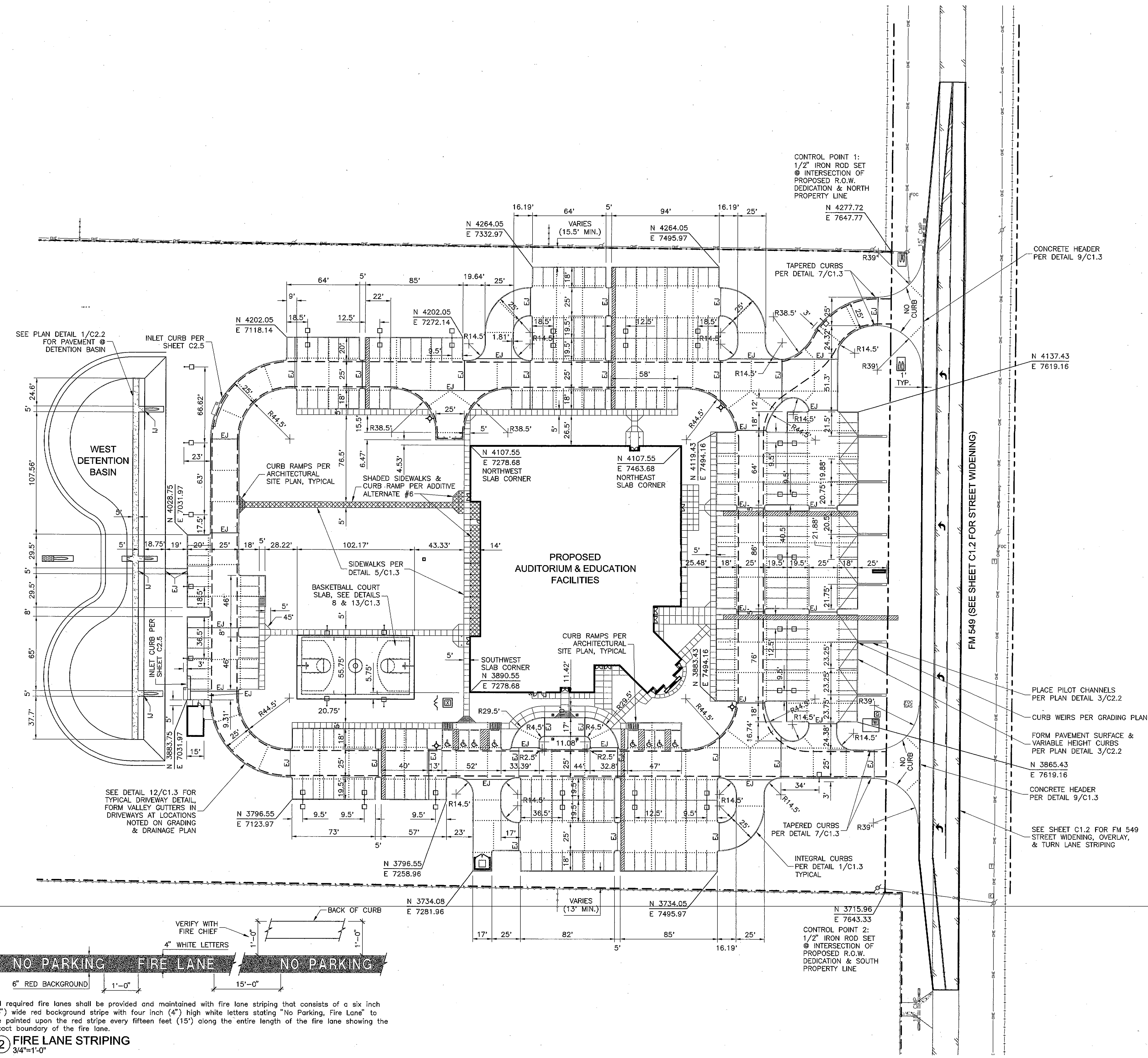
- LEGEND**
- FIRE LANE STRIPING
  - ..... CONTRACTION JOINT
  - LIGHT POLE
  - EJ EXPANSION JOINT
  - IJ ISOLATION JOINT

**1 SITE PAVING PLAN**  
 1"=40'



**2 FIRE LANE STRIPING**  
 3/4"=1'-0"

All required fire lanes shall be provided and maintained with fire lane striping that consists of a six inch (6") wide red background stripe with four inch (4") high white letters stating "No Parking, Fire Lane" to be painted upon the red stripe every fifteen feet (15') along the entire length of the fire lane showing the exact boundary of the fire lane.



CONCRETE HEADER PER DETAIL 9/C1.3

TAPERED CURBS PER DETAIL 7/C1.3

NO CURB

FM 549 (SEE SHEET C1.2 FOR STREET WIDENING)

PLACE PILOT CHANNELS PER PLAN DETAIL 3/C2.2

CURB WEIRS PER GRADING PLAN

FORM PAVEMENT SURFACE & VARIABLE HEIGHT CURBS PER PLAN DETAIL 3/C2.2

N 3865.43  
E 7619.16

CONCRETE HEADER PER DETAIL 9/C1.3

SEE SHEET C1.2 FOR FM 549 STREET WIDENING, OVERLAY, & TURN LANE STRIPING

CONTROL POINT 1:  
1/2" IRON ROD SET @ INTERSECTION OF PROPOSED R.O.W. DEDICATION & NORTH PROPERTY LINE  
N 4277.72  
E 7647.77

CONTROL POINT 2:  
1/2" IRON ROD SET @ INTERSECTION OF PROPOSED R.O.W. DEDICATION & SOUTH PROPERTY LINE  
N 3715.96  
E 7643.33