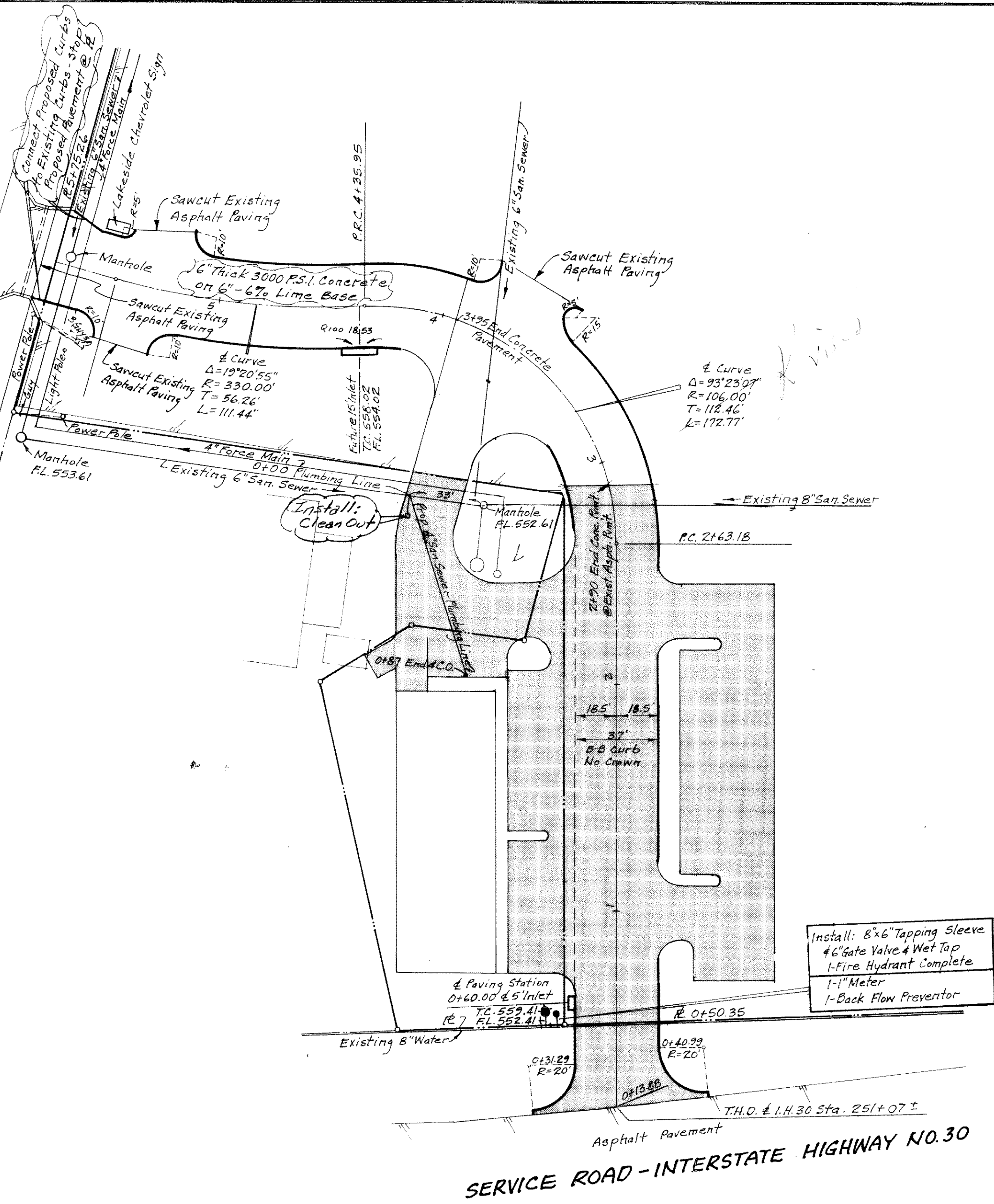


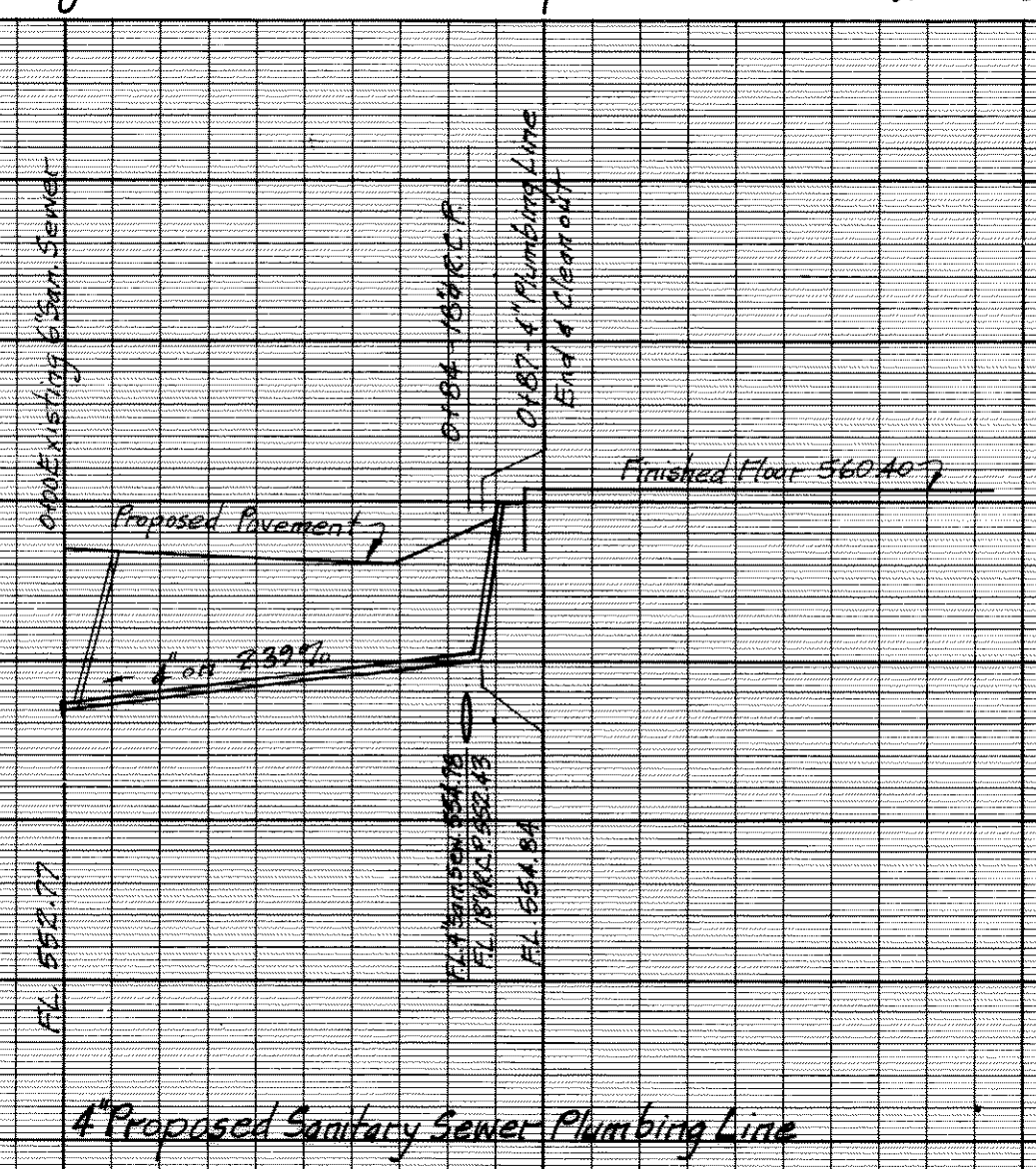
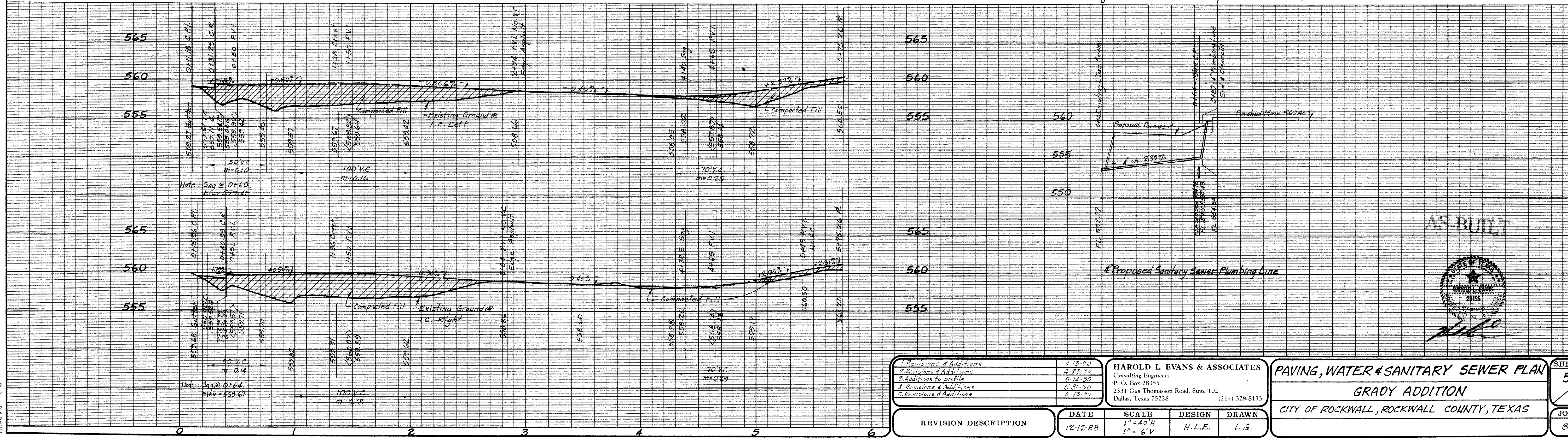
STATE HIGHWAY NO. 205  
Asphalt Pavement  
Existing 8" Water



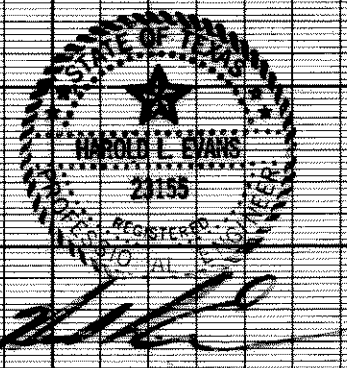
Asphalt Pavement  
SERVICE ROAD - INTERSTATE HIGHWAY NO. 30

Install: 8"x6" Tapping Sleeve  
#6 Gate Valve & Wet Top  
1" Fire Hydrant Complete  
1-1" Meter  
1-Back Flow Preventer

Benchmark: Railroad spike in power pole at Southwest entrance to Lakeside Chevrolet.  
Elev. 560.81



AS BUILT



1. Revisions & Additions	4-13-90
2. Revisions & Additions	4-28-90
3. Additions to profile	5-14-90
4. Revisions & Additions	5-31-90
5. Revisions & Additions	6-13-90

**HAROLD L. EVANS & ASSOCIATES**  
Consulting Engineers  
P. O. Box 28355  
2331 Gus Thomasson Road, Suite 102  
Dallas, Texas 75228 (214) 328-8133

**PAVING, WATER & SANITARY SEWER PLAN**  
**GRADY ADDITION**  
CITY OF ROCKWALL, ROCKWALL COUNTY, TEXAS

SHEET NO. **5**  
**7**  
JOB NO. **85107**

REVISION DESCRIPTION	DATE	SCALE	DESIGN	DRAWN
	12-12-88	1" = 40' H. 1" = 6' V	H. L. E.	L. G.