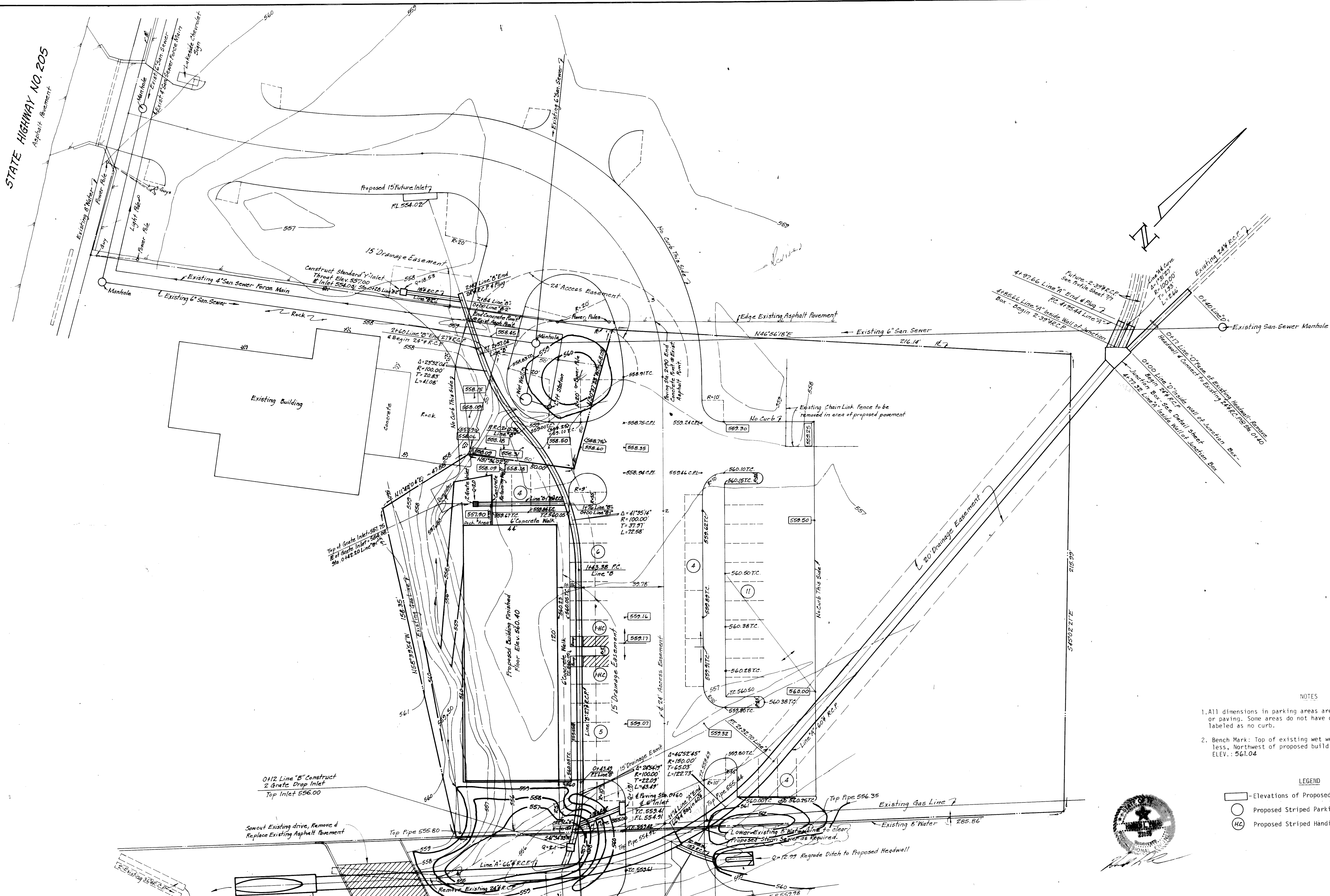
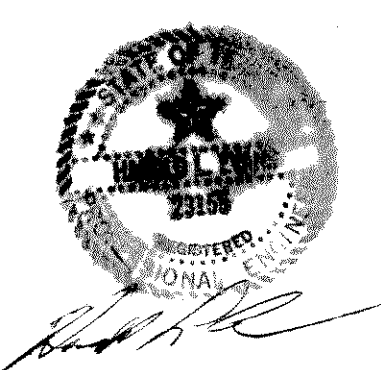


STATE HIGHWAY NO. 205
Asphalt Pavement



- NOTES
- All dimensions in parking areas are to face of curb or paving. Some areas do not have curbs and will be labeled as no curb.
 - Bench Mark: Top of existing wet well 60 feet, more or less, Northwest of proposed building. ELEV.: 561.04

- LEGEND
- Elevations of Proposed Finished Grades
 - Proposed Striped Parking Spaces
 - HC Proposed Striped Handicap Parking Spaces



AS-BUILT

INTERSTATE HIGHWAY NO. 30
(SERVICE ROAD)

REVISION DESCRIPTION	DATE	SCALE	DESIGN	DRAWN
1. Revisions & Additions to Plan.	4-20-90			
2. Revisions & Additions to Plan.	5-10-90			
3. Revisions & Additions to Plan.	5-31-90			
4. Revisions & Additions to Plan.	6-13-90			
5. Revisions & Additions to Plan.	6-29-90			

HAROLD L. EVANS
Consulting Engineer
P.O. Box 28355
2331 Gus Thomasson Road, Suite 102
Dallas, Texas 75228 (214) 328-8133

DRAINAGE IMPROVEMENTS AND GRADING PLAN		GRADY ADDITION	
CITY OF ROCKWALL, ROCKWALL COUNTY, TEXAS		SHEET NO. 4 OF 7	
		JOB NO. 85107	