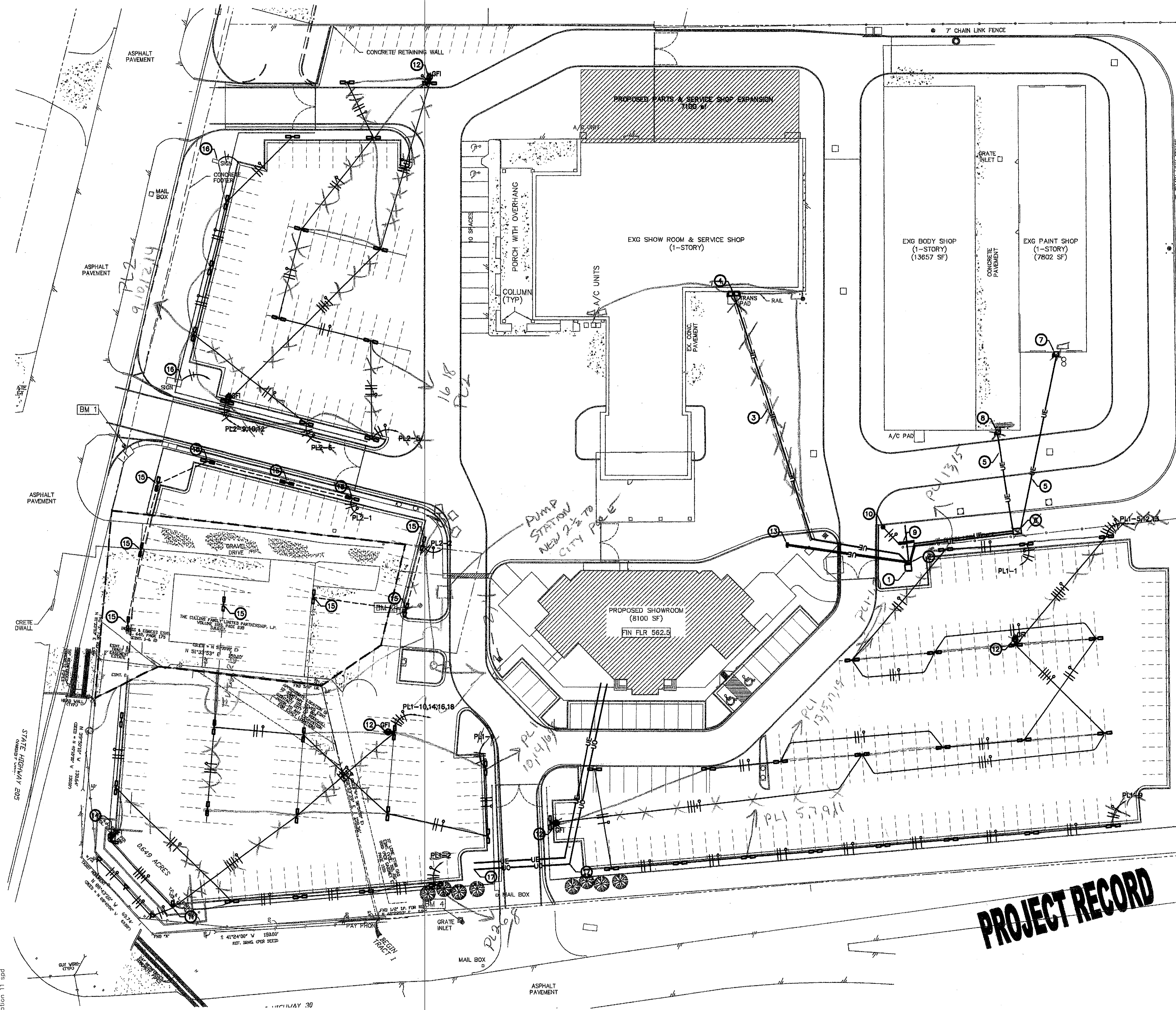


M:\LAKESIDE\LSC\LAKESIDE CHEVROLET - ROCKWALL TEXAS\Sheets\C13 SITE ELECTRICAL AND LIGHTING PLAN.dwg, C13 SITE ELECTRICAL AND LIGHTING PLAN, 7/30/2006 3:56:47 PM, saved, station 11.spd



SITE UTILITY PLAN

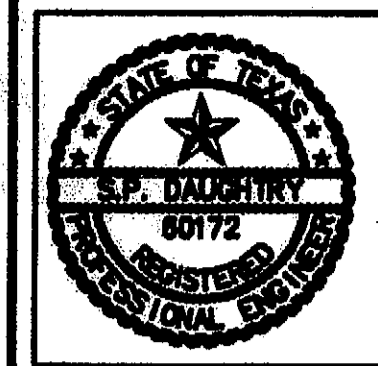
- GENERAL NOTES:**
- REFER TO KEYED NOTES FOR SPECIFIC PLAN INFORMATION.
 - ALL LIGHTING FIXTURES AND POLES FURNISHED BY OWNER.
 - REFER TO SHEET SE-2 FOR PANEL SCHEDULE AND RISER DIAGRAM.
 - REFER TO SHEET SE-2 FOR FIXTURE MOUNTING DETAILS.
 - MOUNTING HT FOR ALL DISPLAY LOT LIGHTING FIXTURE SHALL BE 21' (22' POLES SHALL BE PROVIDED BY OWNER.)
 - ALL SAFETY SWITCHES MOUNTED ON NEW SERVICES RUNS SHALL BE S.E.E. RATED.
 - VERIFY EXACT SIZE OF EXISTING SERVICE EQUIPMENT IN PAINT SHOP, BODY SHOP AND SHOWROOM AND SERVICE SHOP.

⑦ ALL POLES FUSED AT POLE

- NOTES:**
- KEYED NOTES DESIGNATED BY: ○
- TXU PAD MOUNT 120/208-3PH WYE TRANSFORMER.
 - TXU CONNECTOR BOX.
 - SAW CUT EXISTING CONCRETE PAVEMENT FOR NEW SERVICE CONDUCTORS. RE DTL 9/SE-2 FOR REPAIR
 - EXISTING PAD MOUNT TRANSFORMER WILL BE REMOVED BY TXU. PROVIDE NEW 400A-3P NEMA 3R FUSED SS AND (1)-600A-3P NEMA 3R FUSED SS, MOUNT ON BUILDING WALL
 - EXISTING UNDERGROUND SERVICE CONDUIT REMAINS. EXTEND NEW SECONDARY CONDUCTOR TO NEW FUSED SS AT EXISTING BUILDING.
 - NEW GROUND MOUNTED PULL BOX FOR NEW SERVICES TO PAINT AND BODY SHOP.
 - NEW 400A SS NEMA 3R, VERIFY.
 - NEW 400A SS NEMA 3R, VERIFY
 - NEW WEATHERPROOF CABINET FOR PANEL PL-1 AND LIGHTING CONTACTORS.
 - EXTEND 120V CIRCUIT TO LOCATION AS DETERMINED FOR NEW GATE OPERATOR.
 - PROVIDE PHOTO CELL LOCATED ON POLE TO CONTROL GROUND MOUNTED LIGHTS.
 - INSTALL GFI OUTLET ON POLE. OUTLET FURNISHED BY POLE SUPPLIER.
 - EXTEND 2- 3" C FROM CONNECTOR BOX TO THIS APPROXIMATE LOCATION FOR FUTURE SERVICE TO SHOWROOM BUILDING.
 - EXTEND 2" C FOR FUTURE EXTENSION.
 - POLE LIGHTING AND CONDUIT IN THIS AREA FOR FUTURE INSTALLATION
 - ELEC CIRCUIT(S) FOR SIGN REMAINS.
 - STUB 1/2" C FOR FUTURE POWER AN COMMUNICATIONS TO THIS AREA.
 - CHANGES MADE BY OWNERS REQUEST

RECORD DRAWINGS
DATE: FEB 13 2007

ENGINEERING INC.
10908 Sanden Dr. Suite 100
Dallas, Texas 75238
214-340-1333



THE SEAL APPEARING ON THIS DOCUMENT WAS AUTHORIZED BY STEVEN P. DAUGHTRY, P.E. 50172 ON JULY 17, 2006

ARCHITECTURAL RESOURCES
2525 74TH ST., SUITE 200
LUBBOCK, TX 79423
(806) 745-1105

Architectural Resources

PARKING LOT IMPROVEMENTS
TO LAKESIDE CHEVROLET

PROJECT NO. P05-0101
DATE: 7/30/2006
DRAWN BY: SPD CHK BY: SPD
REVISIONS:

SHEET NO.
SE-1

OF 12

SITE ELECTRICAL AND LIGHTING PLAN

SCALE: 1" = 30'-0"

