

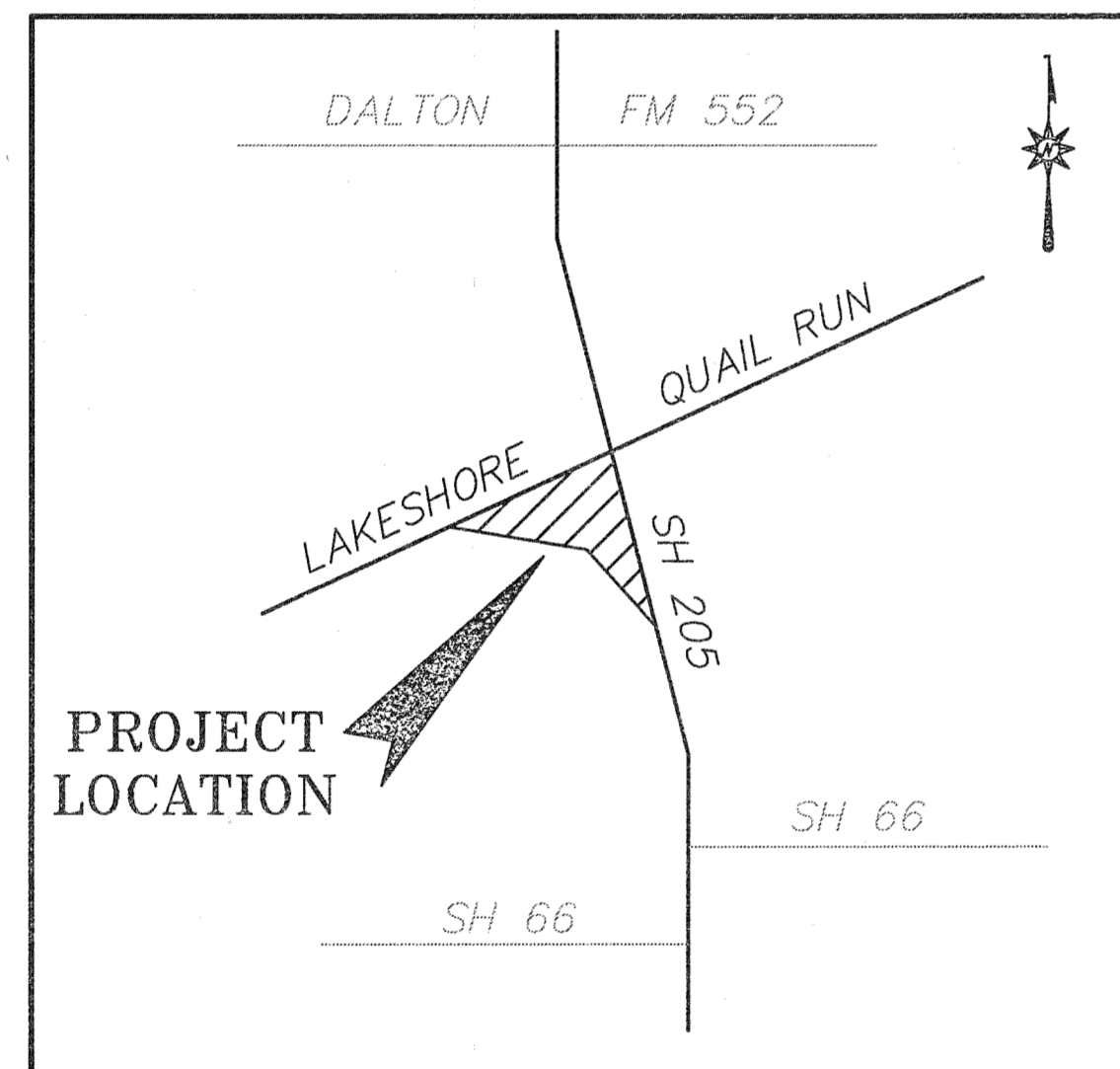
**CONSTRUCTION PLANS
FOR
RETAINING WALL
LAKESHORE COMMONS
4.7 AC ±
LOTS 1 - 4, BLOCK A
LAKESHORE COMMONS ADDN
IN
ROCKWALL, TEXAS**

FOR

**MOORE WORTH INVESTMENTS, LLC
8445 FREEPORT PARKWAY, SUITE 175
IRVING, TX 75063
214-415-9993**

JANUARY 2017

SHEET INDEX	
SHT #	SHEET TITLE
C-1	COVER SHEET
C-2	RETAINING WALL PLAN
C-3	RETAINING WALL PROFILE
S-1	STRUCTURAL DETAILS - BY OTHERS



VICINITY MAP

PLAN SUBMITTALS		
No	DATE	COMMENTS
1	01-06-17	CITY OF ROCKWALL - 1st SUBMITTAL
F	01-10-17	CITY OF ROCKWALL - FINALS

AS BUILT

Note: Copyright © Hickman Consulting Engineers, Inc. All rights reserved. No part of this drawing may be reproduced by photocopying, recording or by any other means, or stored, processed or transmitted in or by any computer or other systems without the prior written permission of Hickman Consulting Engineers, Inc. Copies of this plan without an original signature and seal are not valid.

This document is released for the purpose of CONSTRUCTION under the authority of Mark H. Hickman, P.E. 78409 on 01-10-17

Hickman Consulting Engineers, Inc.
3094 County Road 1024
Farmersville, Texas 76442
Ph: (817)784-2499
markhick@me.com
Engineers
HCE

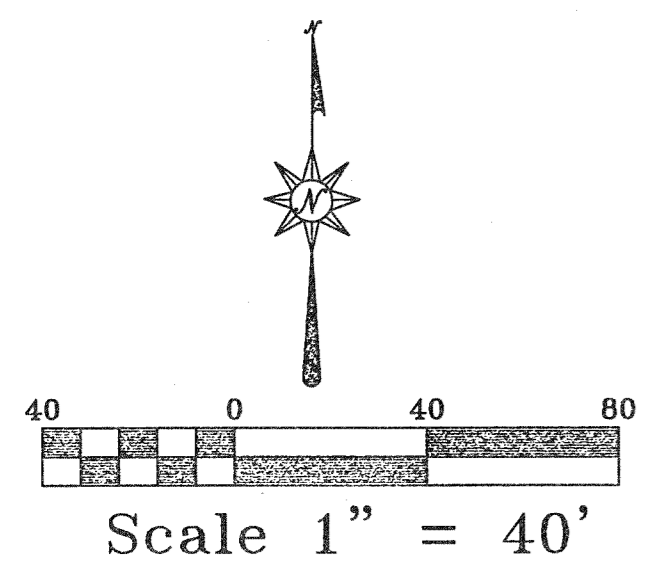
COVER SHEET
LAKESHORE COMMONS
LOTS 1 - 4: LAKESHORE COMMONS
ROCKWALL, ROCKWALL COUNTY, TEXAS
MOORE WORTH INVESTMENTS, LLC
8445 FREEPORT PARKWAY, SUITE 175
IRVING, TX 75063
214-415-9993

SCALE: N/A
DATE: JAN2017
DRAWN BY: FP
CHK'D BY: MHH
JOB NO: 1501-357
FILE: 1501-357-LWD
DATE OF SUBMITTAL: 01/10/17



REVISION	DATE	DESCRIPTION

SHEET
C-1



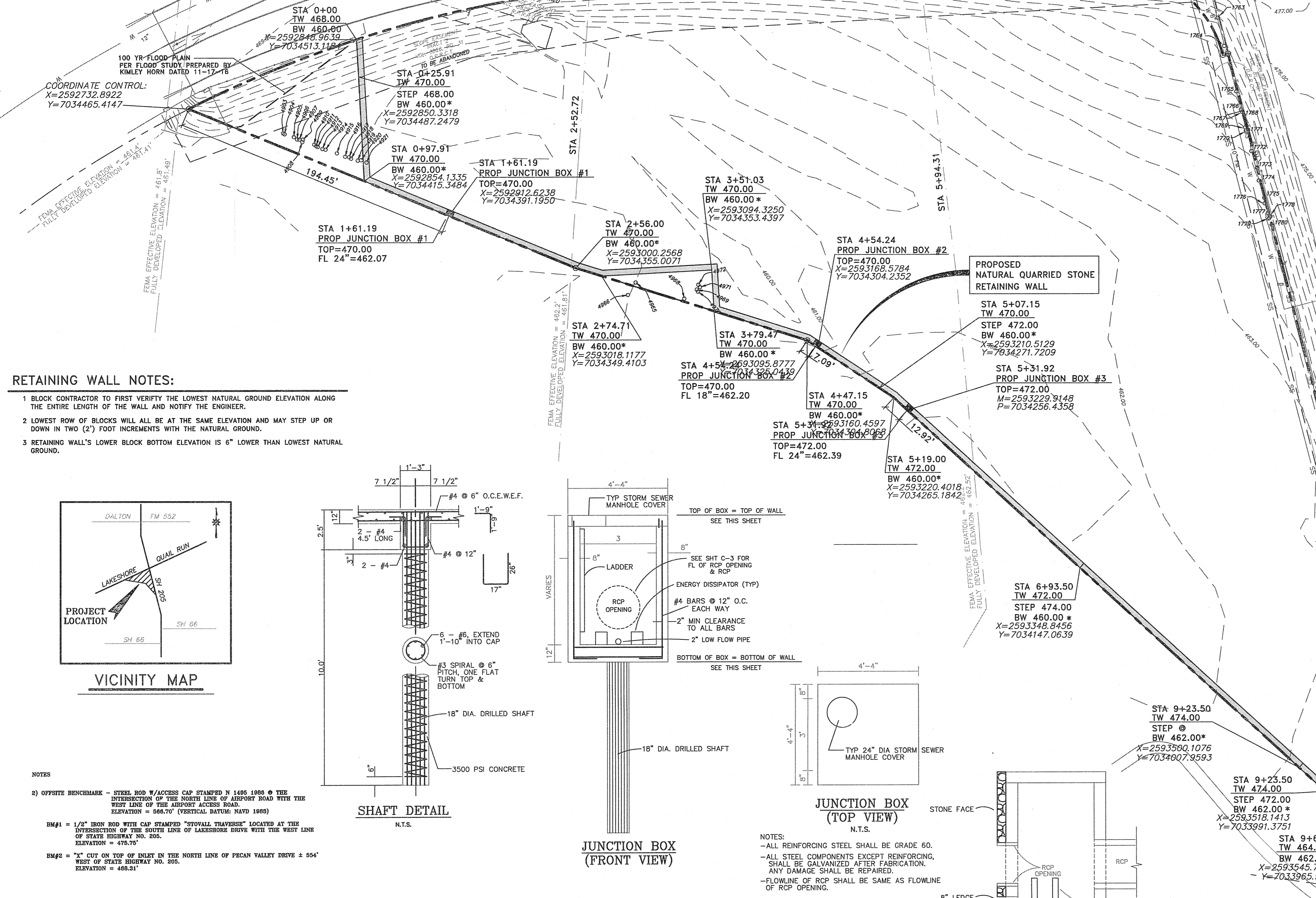
BEFORE YOU DIG CALL:
1-800-245-4545

NOTES:
1 BOUNDARY/TOPO SURVEY PROVIDED BY:
STOVALL & ASSOCIATES LAND SURVEYING
6417 WESLEY STREET
GREENVILLE, TEXAS 75402
903-450-1120

TEXAS ONE CALL SYSTEM

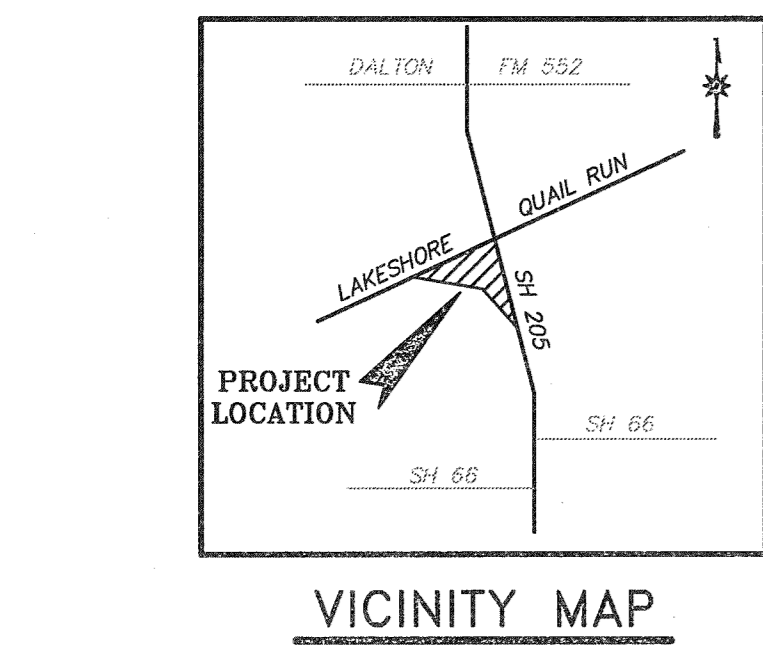
LEGEND	
PROPOSED	EXISTING
500 - PROPOSED CONTOURS	○ = POWER POLE
515.00 - SPOT ELEVATION AT FINISHED GRADE	○ = ANCHOR
514.00 - INDICATES TOP OF STRUCTURE	○ = WATER METER
515.50 - INDICATES FLOW LINE ELEVATION	○ = IRRIGATION CONTROL VALVE
(W) - PROPOSED WATER LINE	○ = TELEPHONE PEDESTAL
(SS) - PROPOSED SANITARY SEWER LINE	○ = GAS METER
(SD) - PROPOSED STORM DRAIN LINE	○ = MAILBOX
(C) - PROPOSED CONDUIT	○ = LIGHT POLE
(G) - PROPOSED GAS	○ = FIRE HYDRANT
(C) - CONCRETE CURB PER CITY STD	○ = UTILITY EASEMENT
(1) - WATER SERVICE TAP NO	○ = DRAINAGE & UTILITY EASEMENT
	○ = FIBER OPTIC CABLE MARKER
	○ = GAS SIGN
	○ = SUB SURFACE SERVICE BOX
	○ = TRAFFIC SIGNAL
	○ = UTILITY EASEMENT
	○ = GAS STUB
	○ = GAS TEST STATION
	○ = BURIED CABLE SIGN

NOTE:
CONTRACTOR TO VERIFY HORIZONTAL & VERTICAL LOCATION OF ALL EXISTING UTILITIES PRIOR TO BEGINNING ANY CONSTRUCTION/EXCAVATION AND NOTIFY THE ENGINEER OF ANY DISCREPANCIES EXISTING UTILITIES SHOWN ON THESE PLANS ARE BASED ON COMBINATION OF FIELD SURVEY & CITY RECORD DRAWINGS



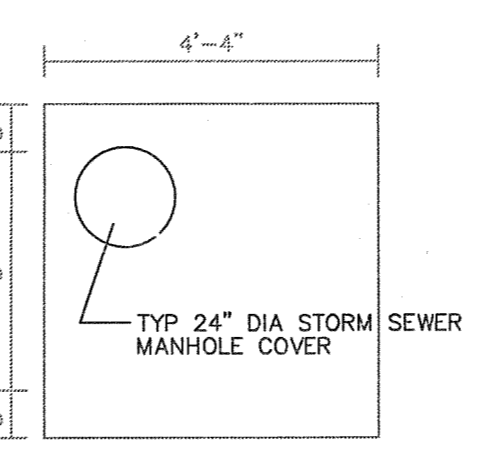
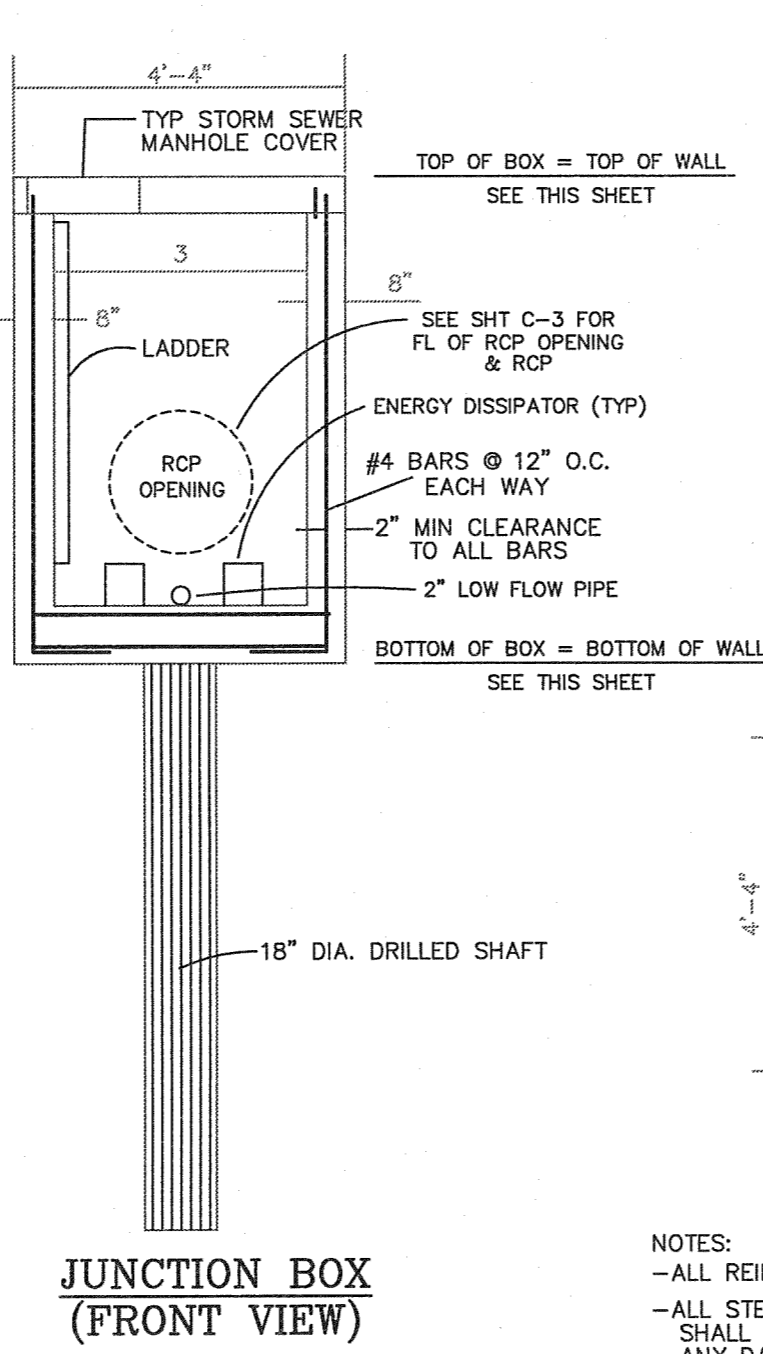
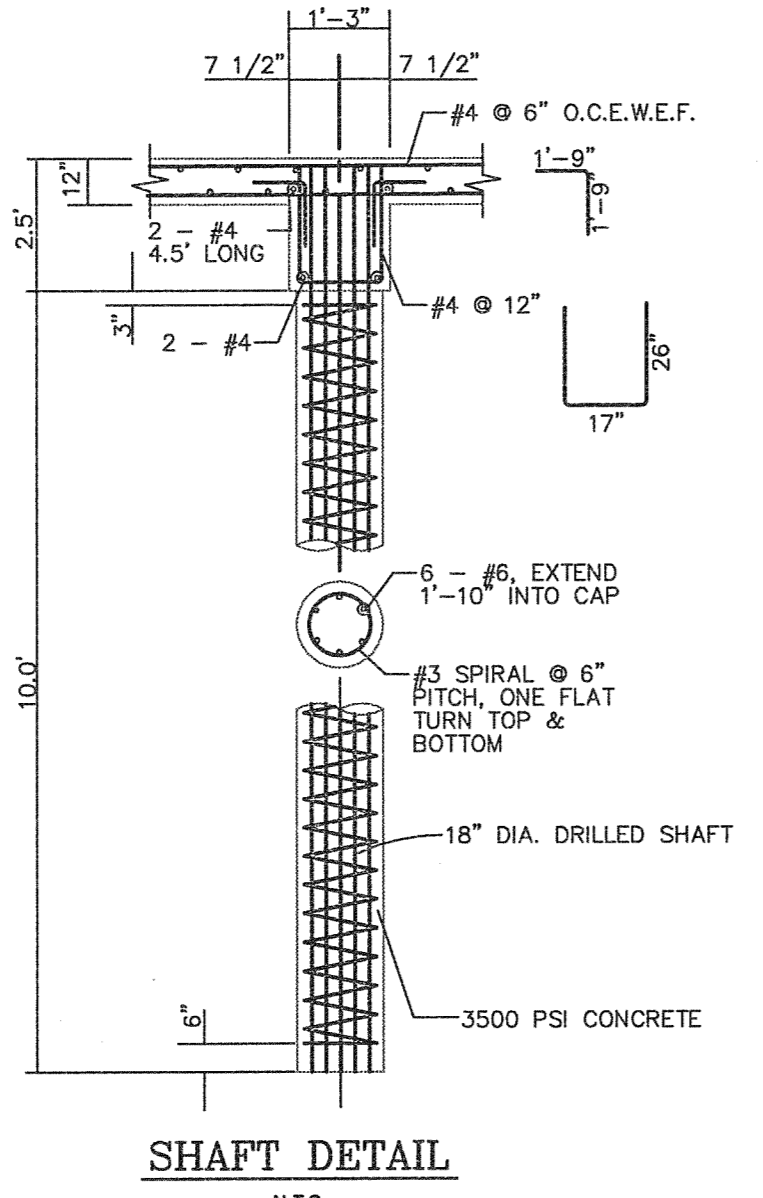
RETAINING WALL NOTES:

- BLOCK CONTRACTOR TO FIRST VERIFY THE LOWEST NATURAL GROUND ELEVATION ALONG THE ENTIRE LENGTH OF THE WALL AND NOTIFY THE ENGINEER.
- LOWEST ROW OF BLOCKS WILL ALL BE AT THE SAME ELEVATION AND MAY STEP UP OR DOWN IN TWO (2') FOOT INCREMENTS WITH THE NATURAL GROUND.
- RETAINING WALL'S LOWER BLOCK BOTTOM ELEVATION IS 6" LOWER THAN LOWEST NATURAL GROUND.

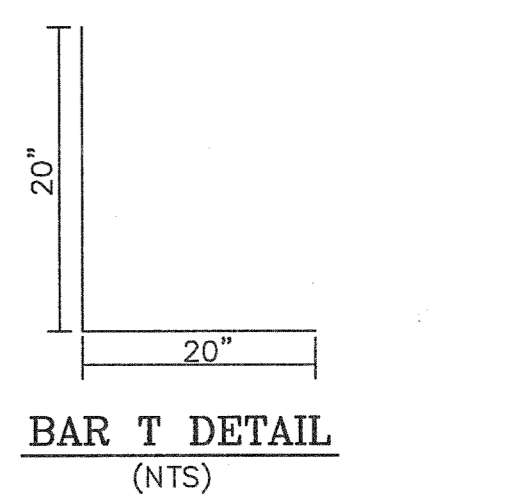
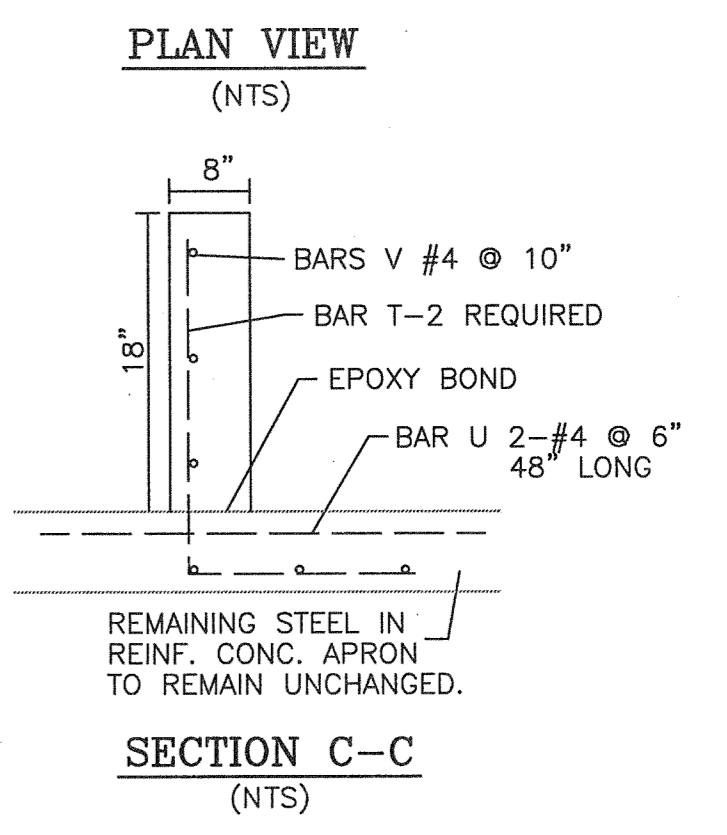
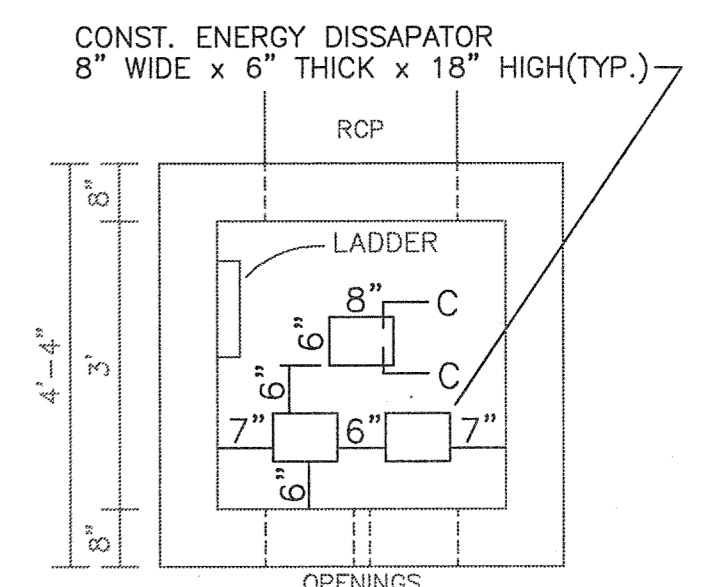


NOTES:

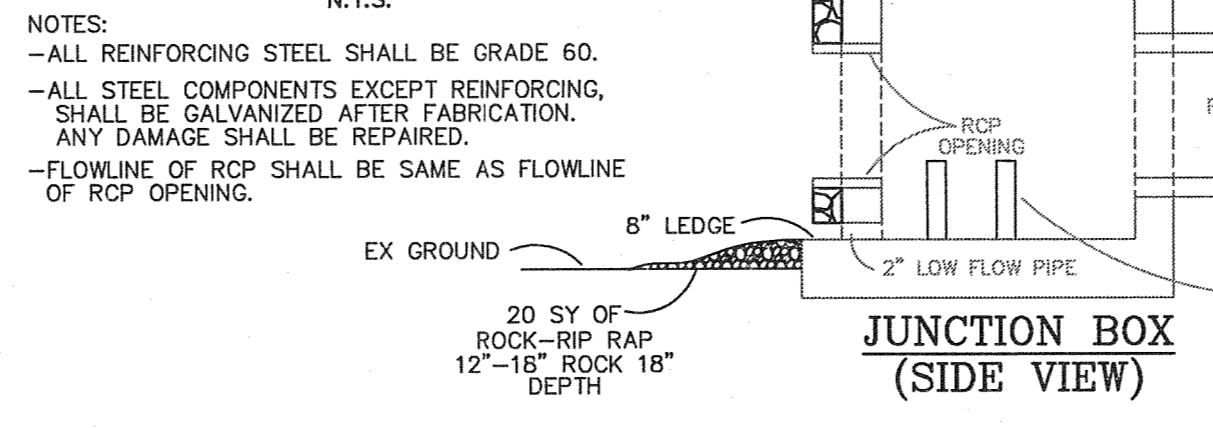
- OFFSITE BENCHMARK - STEEL ROD W/ACCESS CAP STAMPED N 1405 1886 @ THE INTERSECTION OF THE NORTH LINE OF AIRPORT ROAD WITH THE WEST LINE OF THE AIRPORT ACCESS ROAD. ELEVATION = 668.70' (VERTICAL DATUM: NAVD 1988)
- BM#1 = 1/2" IRON ROD WITH CAP STAMPED "STOVALL TRAVELERS" LOCATED AT THE INTERSECTION OF THE SOUTH LINE OF LAKESHORE DRIVE WITH THE WEST LINE OF STATE HIGHWAY NO. 205. ELEVATION = 476.79'
- BM#2 = "X" CUT ON TOP OF INLET IN THE NORTH LINE OF PECAN VALLEY DRIVE ± 55' WEST OF STATE HIGHWAY NO. 205. ELEVATION = 468.31'



JUNCTION BOX DETAILS
(NTS)



ENERGY DISSIPATOR DETAIL
(NTS)



JUNCTION BOX (SIDE VIEW)
(NTS)

AS BUILTS

This document is released for the purpose of CONSTRUCTION under the authority of Mark H. Hickman, P.E. 78409 on 01-10-17

Hickman Consulting Engineers, Inc.
3094 County Road 1054
Farmersville, Texas 75442
Ph (972)704-2499
markredick@gmail.com
Engineers Planners

HCE

RETAINING WALL PLAN
LAKESHORE COMMONS
LOTS 1 - 4: LAKESHORE COMMONS
ROCKWALL, ROCKWALL COUNTY, TEXAS
MOORE WORTH INVESTMENTS, LLC
8445 FREEMONT PARKWAY, SUITE 175
IRVING, TX 75065
214-415-9993

SCALE: 1"=40'
DATE: JAN2017
DRAWN BY: FP
CHK'D BY: WHH
JOB NO: 1501-357
FILE# 65-1501357-LWD
DATE SUBMITTED: 01/10/17 (P)
F-12172

Hickman Consulting Engineers, Inc.
78409
01/10/17

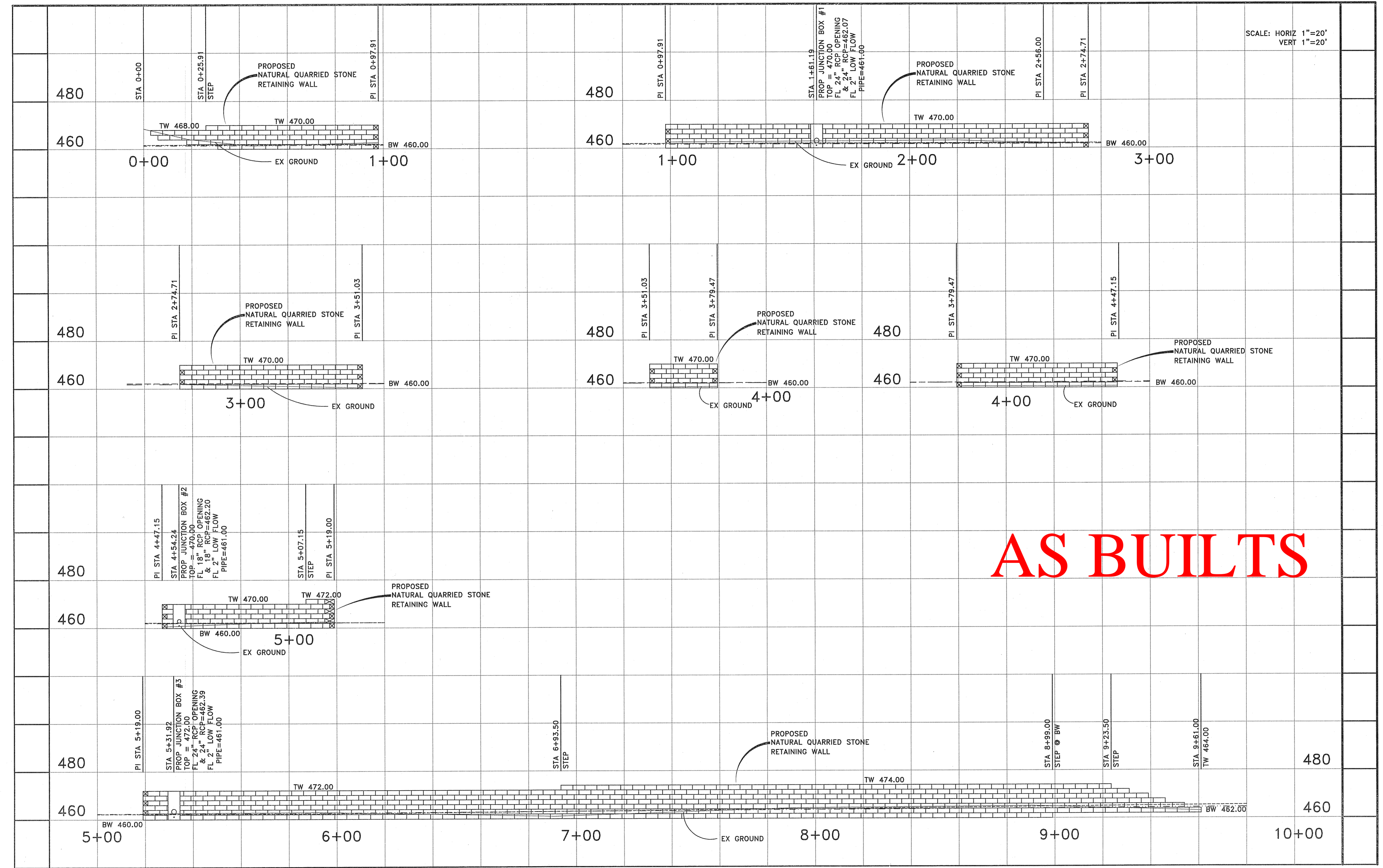
REVISION	DATE	BY	DESCRIPTION

SHEET
C-2

Note: Copyright © Hickman Consulting Engineers, Inc. All rights reserved. No part of this drawing may be reproduced by photocopying, recording or by any other means, or stored, processed or transmitted in or by any computer or other systems without the prior written permission of Hickman Consulting Engineers, Inc. Copies of this plan without an original signature and seal are not valid.

LEGEND:
 - - - - - FEMA EFFECTIVE FLOOD LINE
 - - - - - FULLY DEVELOPED FLOOD LINE

SCALE: HORIZ 1"=20'
 VERT 1"=20'



AS BUILTS

Note: Copyright © Hickman Consulting Engineers, Inc. All rights reserved. No part of this drawing may be reproduced by photocopying, recording or by any other means, or stored, processed or transmitted in or by any computer or other systems without the prior written permission of Hickman Consulting Engineers, Inc. Copies of this plan without an original signature and seal are not valid.

This document is released for the purpose of CONSTRUCTION under the authority of Mark H. Hickman, P.E. 78409 on 01-10-17

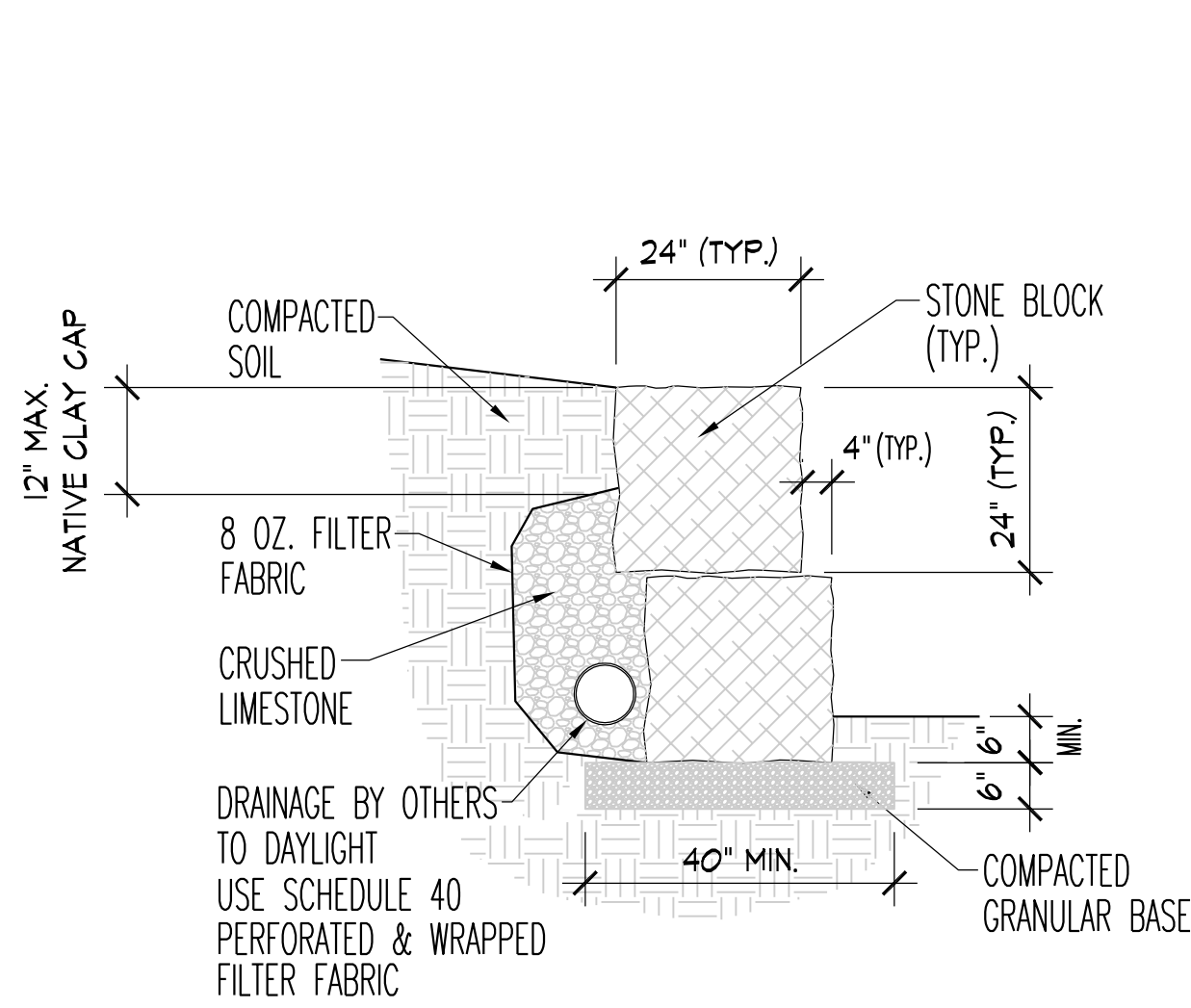
Hickman Consulting Engineers, Inc.
 HCE
 3094 County Road 1024
 Farmersville, Texas 75442
 Ph (972)784-2189
 mark@hickm.com
 Engineers
 Planners

RETAINING WALL PROFILE
 LAKESHORE COMMONS
 LOTS 1 - 4: LAKESHORE COMMONS
 ROCKWALL, ROCKWALL COUNTY, TEXAS
 MOORE WORTH INVESTMENTS, LLC
 8445 FREEMONT PARKWAY, SUITE 175
 IRVING, TX 75063
 214-415-9955

SCALE: 1"=20'
 DATE: JAN2017
 DRAWN BY: FP
 CHK'D BY: MHH
 JOB NO: 1501-357
 FILE: 65-1501357-LWALLPRO
 DATE OF SUBMITTAL: 01/10/17(C)
 Hickman Consulting Engineers, Inc.

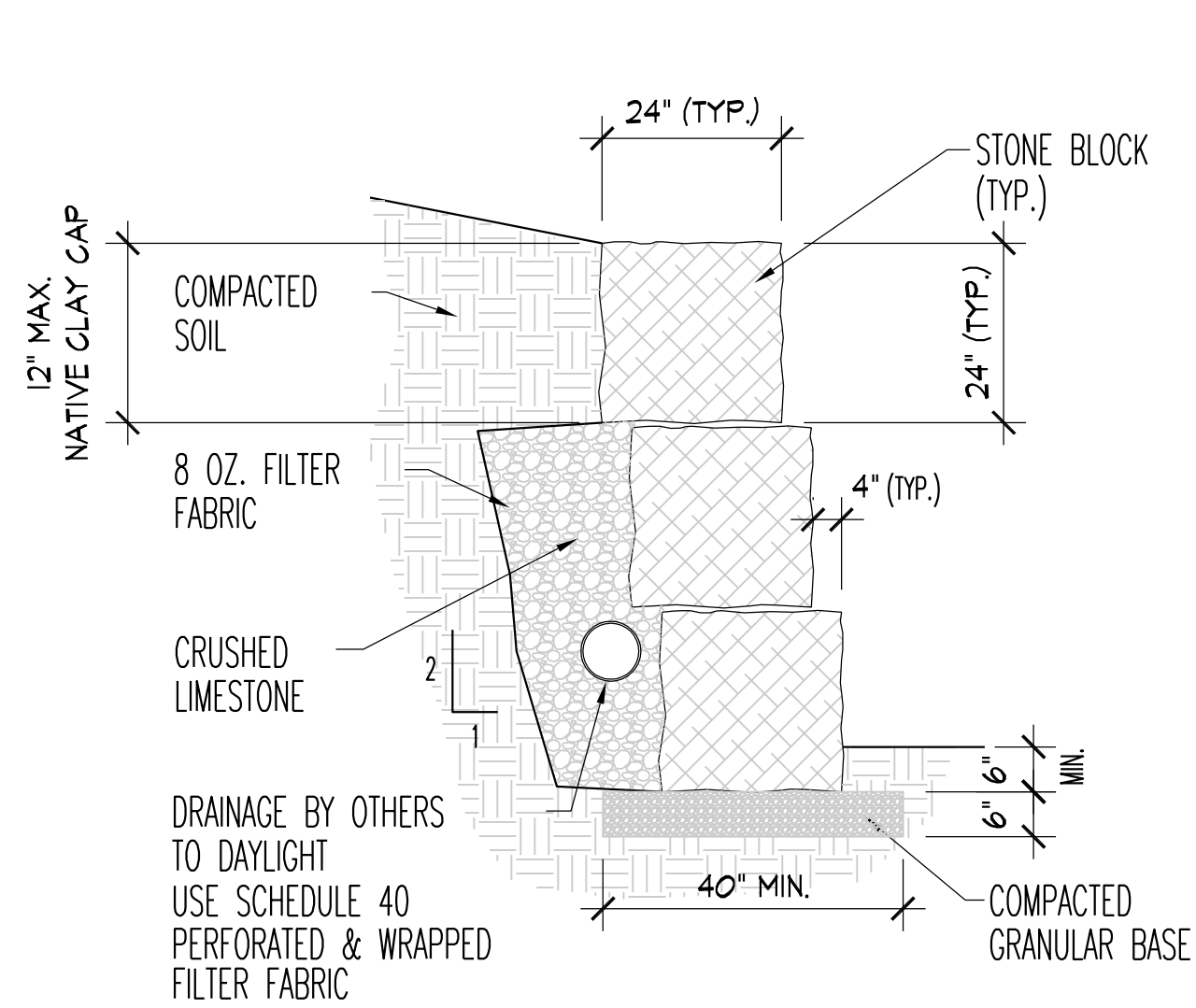
 F-12172

REVISION	DATE	DESCRIPTION



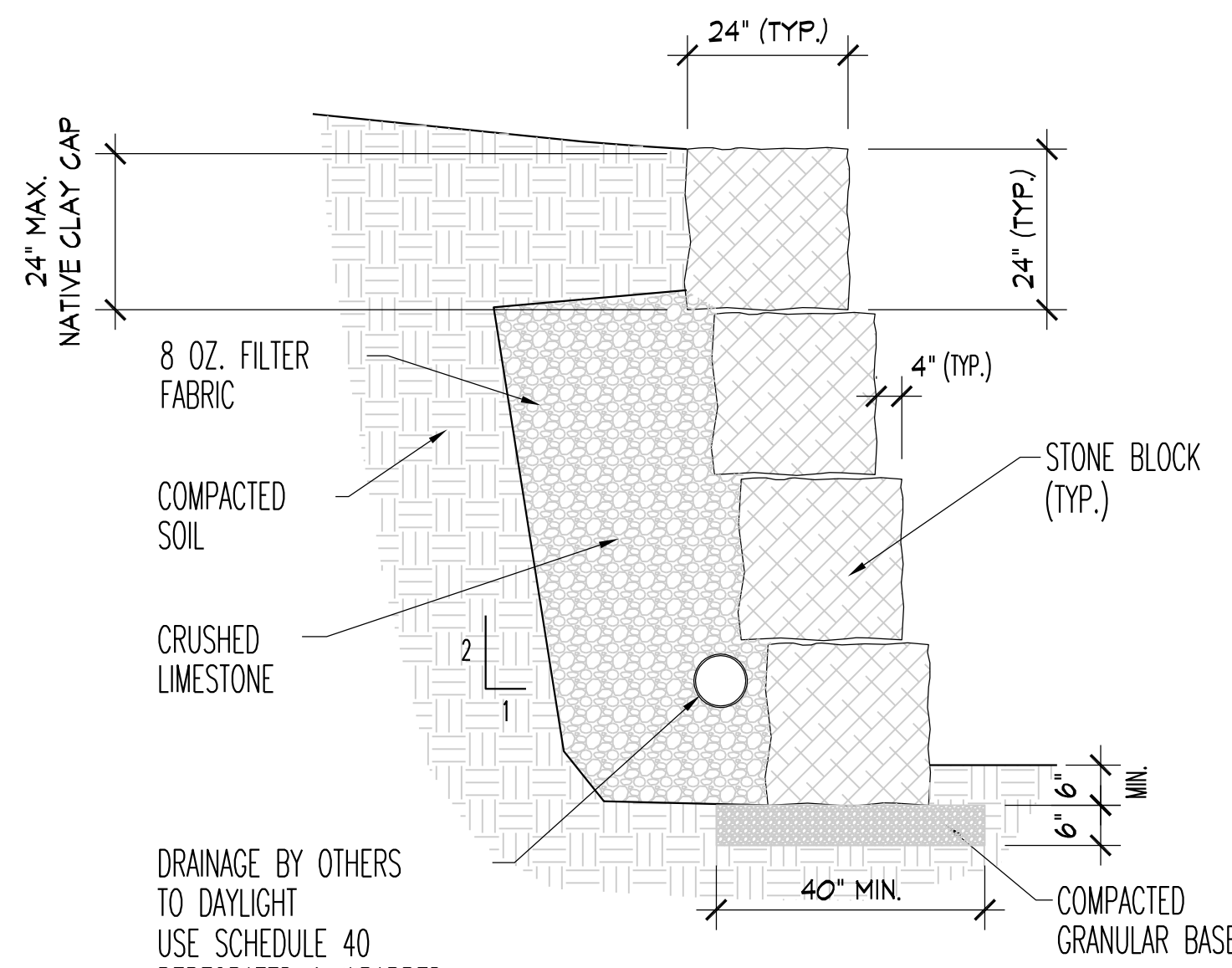
1 2-BLOCK SECTION

SCALE: 1/4" = 1'-0" ON 11x17 SHEET
SCALE: 1/2" = 1'-0" ON 24x36 SHEET



2 3-BLOCK SECTION

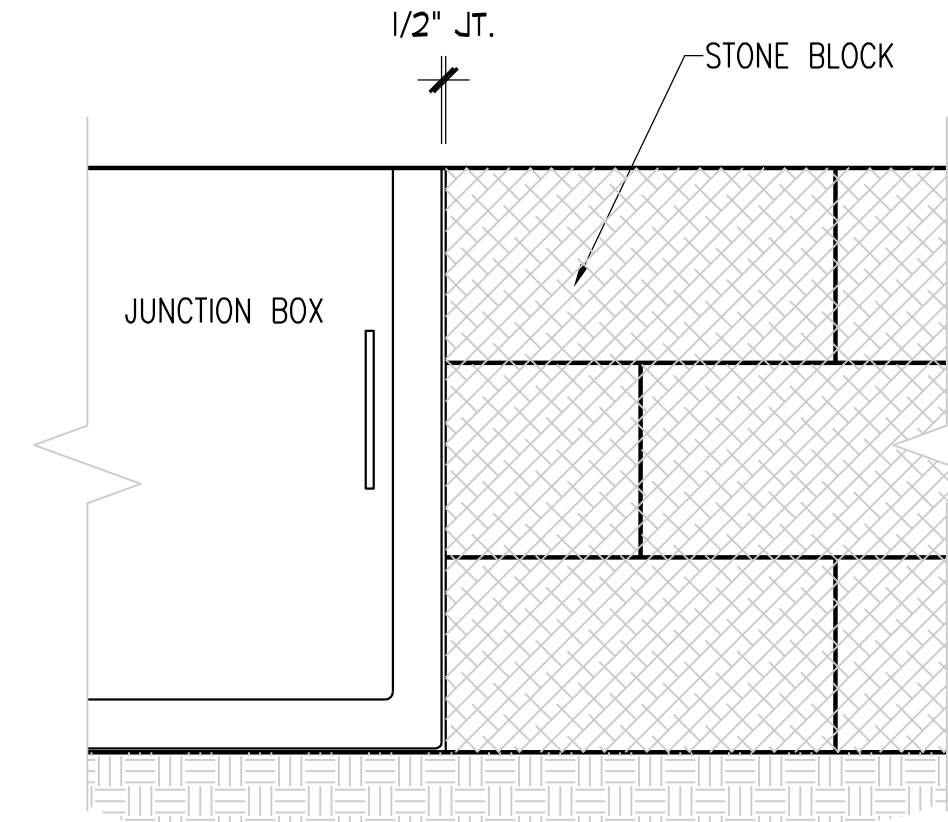
SCALE: 1/4" = 1'-0" ON 11x17 SHEET
SCALE: 1/2" = 1'-0" ON 24x36 SHEET



3 4-BLOCK SECTION

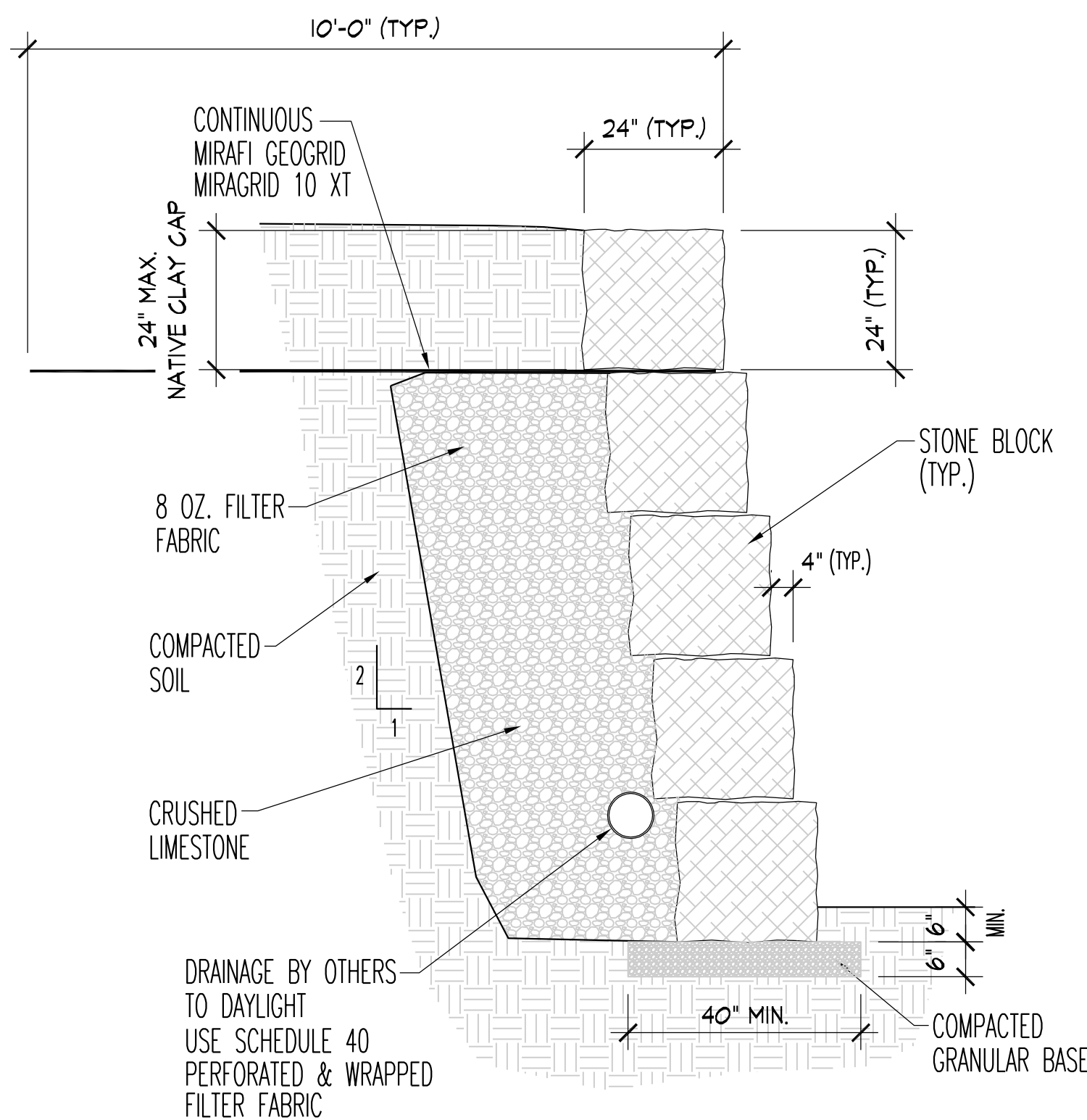
SCALE: 1/4" = 1'-0" ON 11x17 SHEET
SCALE: 1/2" = 1'-0" ON 24x36 SHEET

7 JUNCTION BOX INTERFACE
NOT TO SCALE



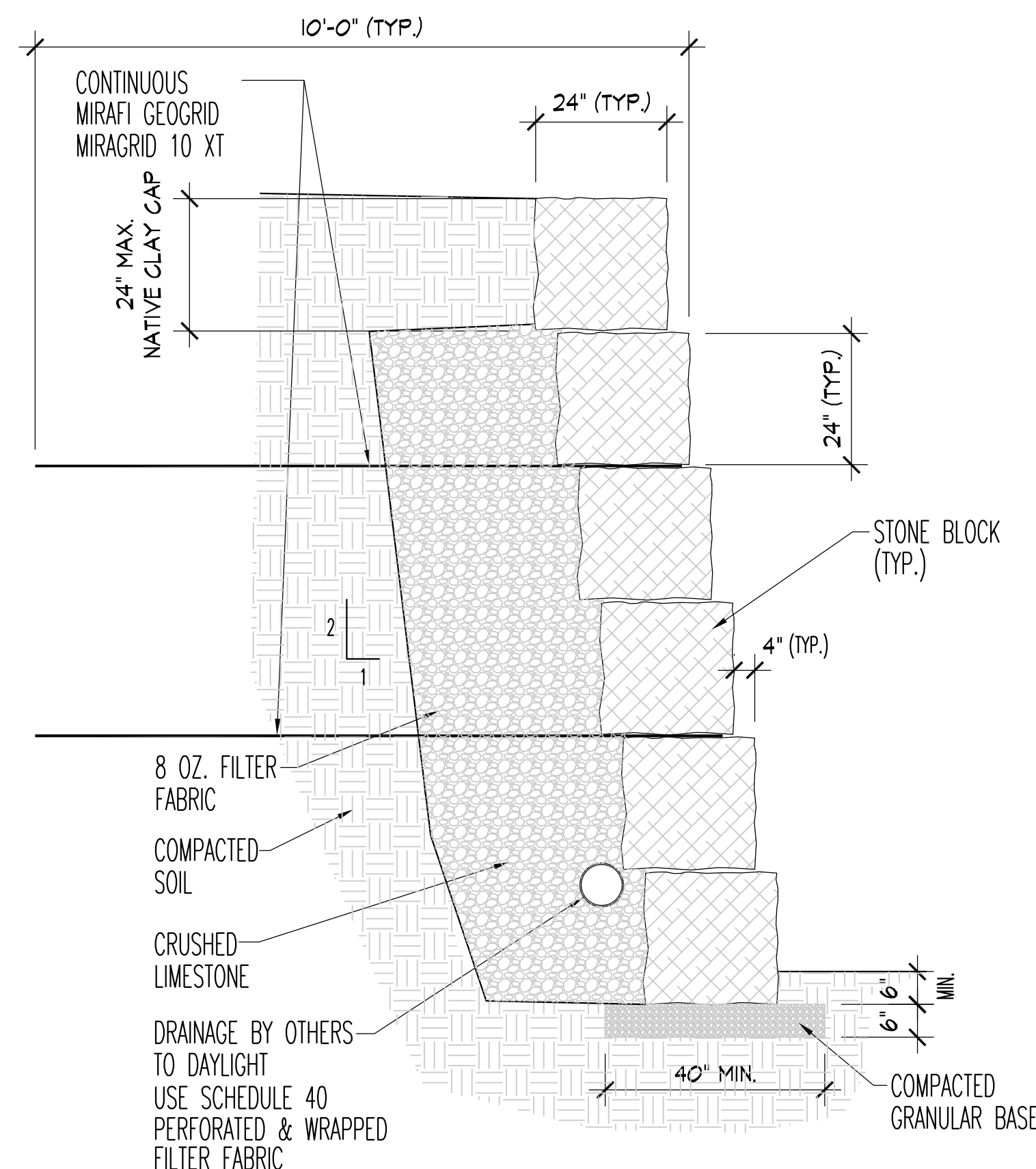
NOTE: IT IS OUR UNDERSTANDING THAT THIS JUNCTION BOX IS TO BE INSTALLED WHICH WILL INTERRUPT THE RETAINING WALL. THE WALLS WILL ABUT THE JUNCTION BOX, BUT SHOULD NOT BE CONNECTED OR MORTARED TO THE JUNCTION BOX.

SOIL DATA USED FOR DESIGN:
EQUIV. FLUID PRESSURE = 35 PCF
FRICTION = 0.28
FACTOR OF SAFETY = 1.5
ALLOWABLE BEARING = 1500 PSF



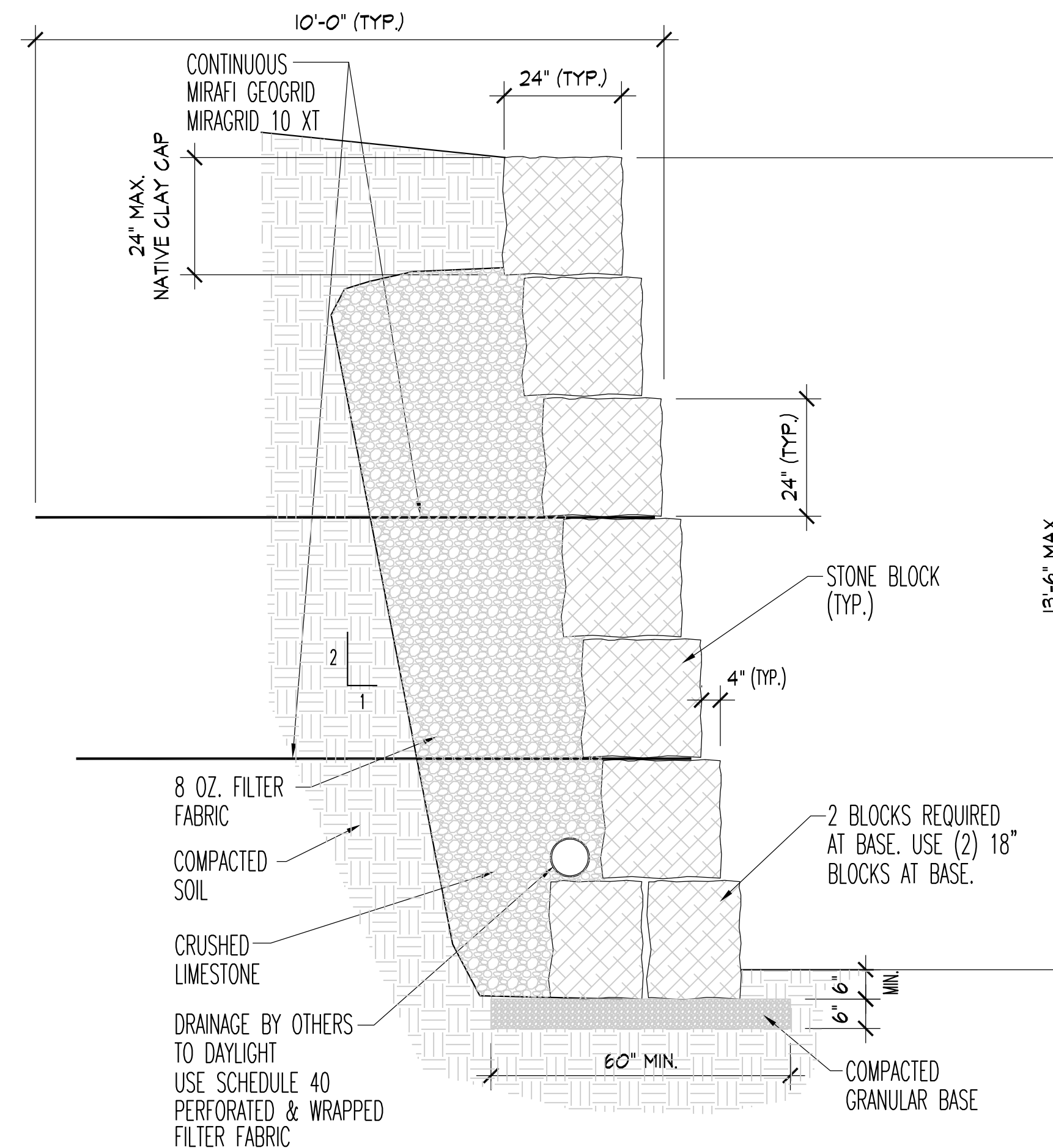
4 5-BLOCK SECTION

SCALE: 1/4" = 1'-0" ON 11x17 SHEET
SCALE: 1/2" = 1'-0" ON 24x36 SHEET



5 6-BLOCK SECTION

SCALE: 1/4" = 1'-0" ON 11x17 SHEET
SCALE: 1/2" = 1'-0" ON 24x36 SHEET

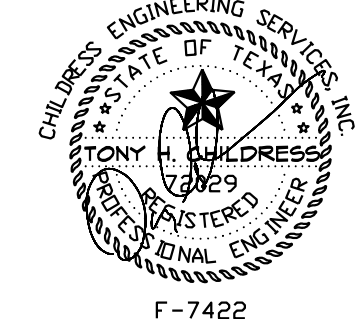


6 7-BLOCK SECTION (MAX. HT.)

SCALE: 1/4" = 1'-0" ON 11x17 SHEET
SCALE: 1/2" = 1'-0" ON 24x36 SHEET

AS BUILTS

The seal appearing on this document was authorized by Tony H. Childress, P.E. #72029 on 1/04/17 (Record copy on file)



F-7422
This document may not be changed in any fashion without permission from Tony H. Childress, P.E.

REVISIONS	BY	DATE
1. REVISION TO DETAIL AT BOX COLLETT	K.A.L.	12/20/16
2. ASSESS THE BLOCK SECTION AT 1/2" MAX. HEIGHT	K.A.L.	12/20/16
3. REVISED PER BRIAN TORTI RED LINES	K.A.L.	1/04/17
4		
5		
6		
7		
8		

JOB NUMBER: 16-332215
DRAWN BY: BT
DATE: 08/11/16
SCALE: 1/4"=1'-0"

SHEET NUMBER:
S1