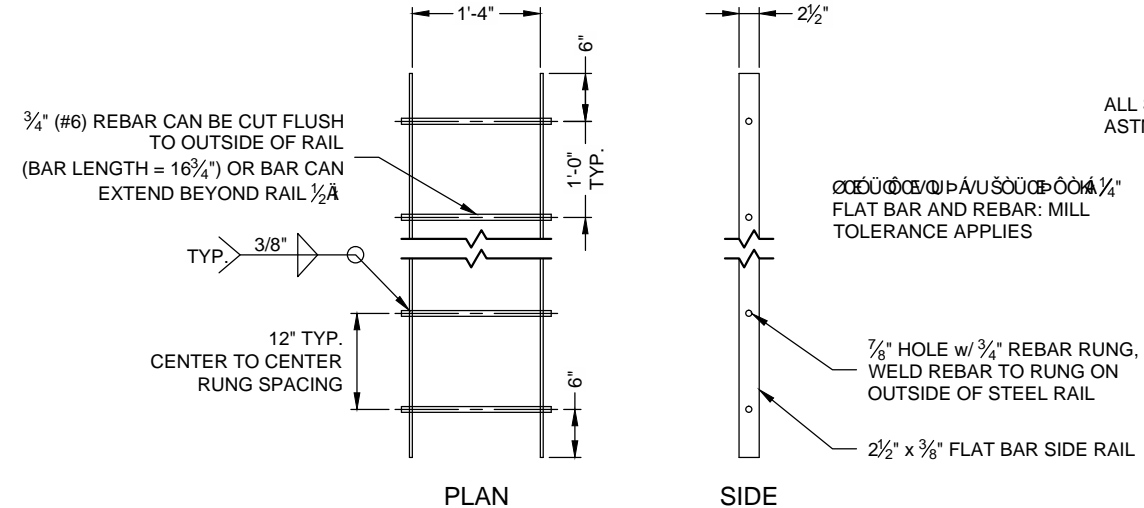


**RECORD DRAWING**  
**June 9, 2020**

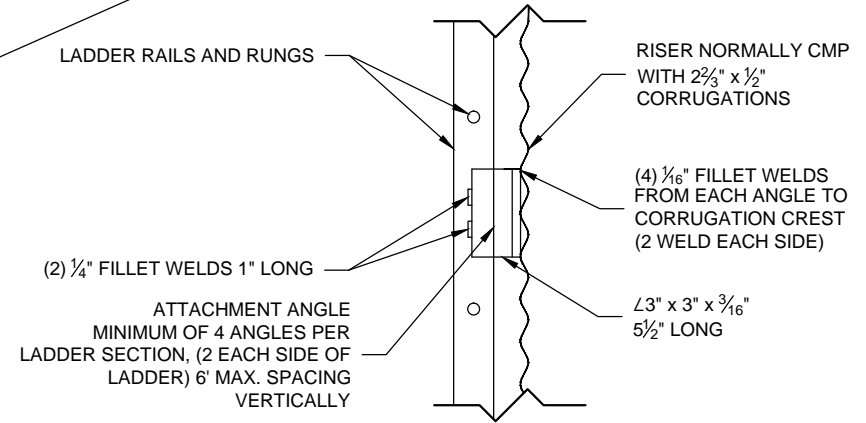
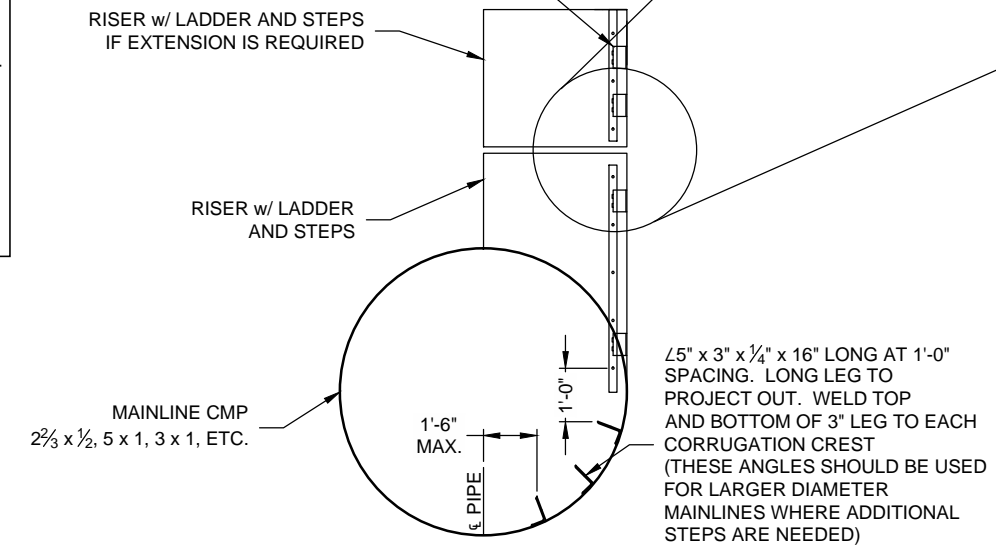
To the best of our knowledge Wier & Associates, Inc., states this plan is As-Built. This information provided is based on surveying at the site and information provided by the contractor.



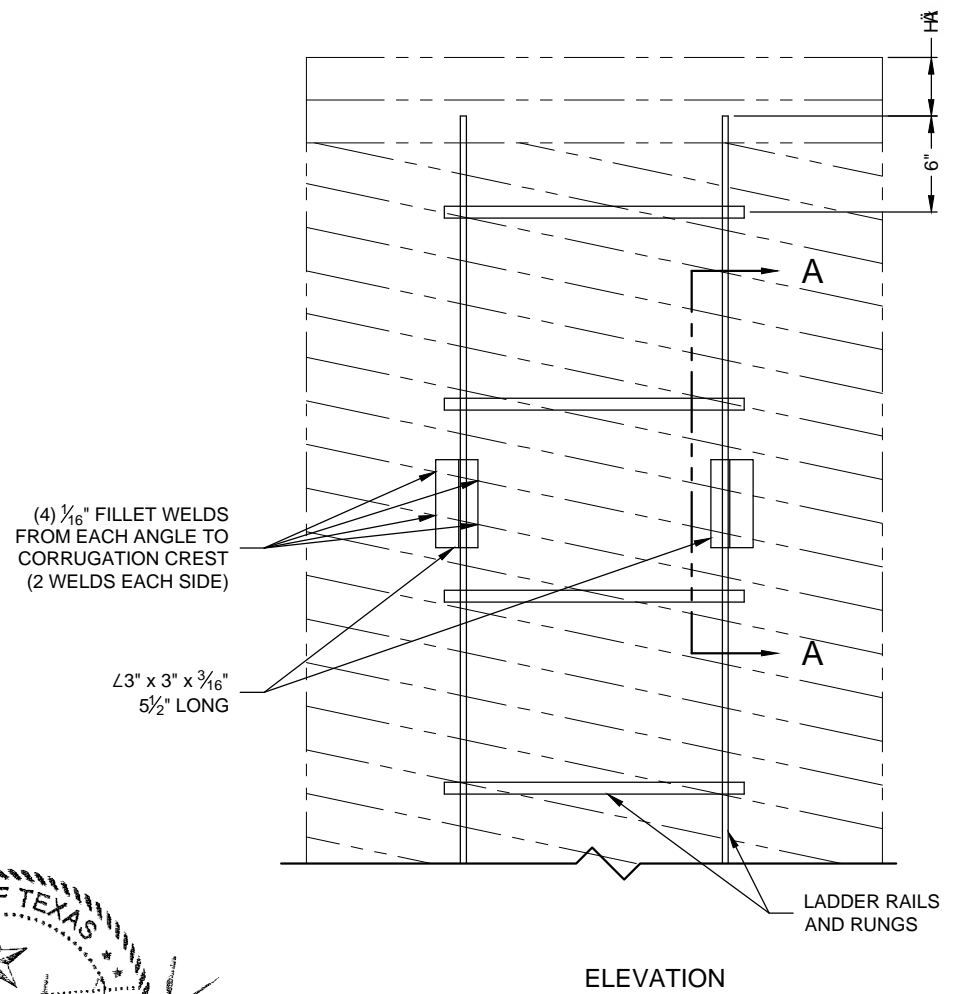
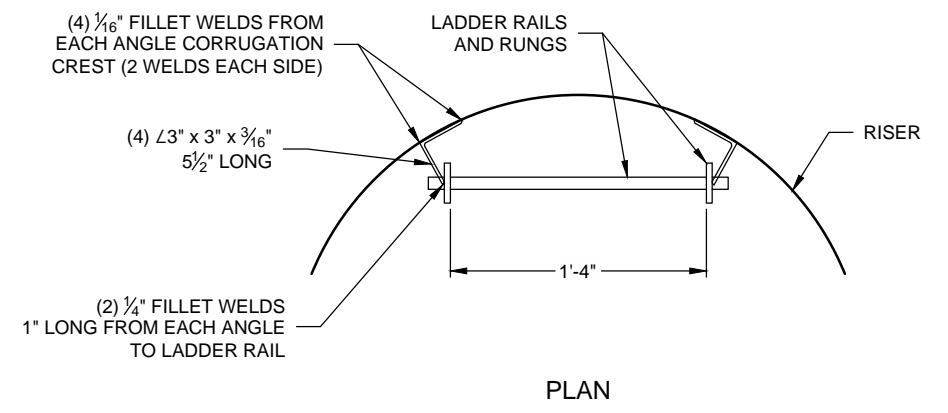
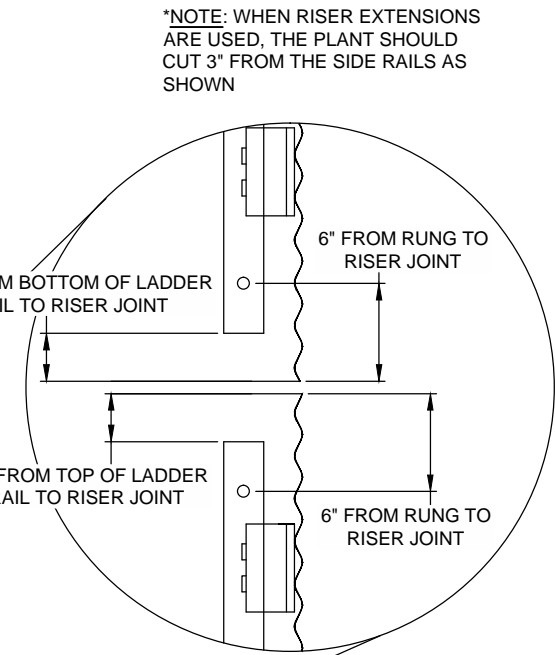
- NOTES:
- LADDERS CAN BE MADE IN 20'-0" STANDARD LENGTHS AND CUT TO FIT
  - ALL MATERIAL TO MEET ASTM A36
  - LADDER TO BE HOT DIPPED GALVANIZED PER ASTM A-123 AFTER FABRICATION IS COMPLETE

**STANDARD LADDER DETAIL**  
NOT TO SCALE  
PART NO. HALAGVL16

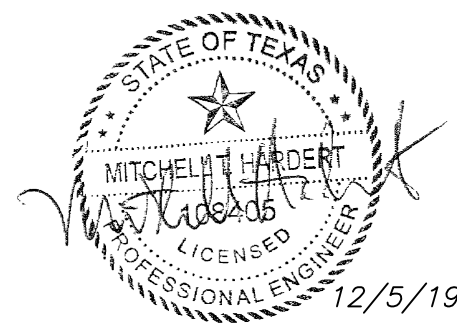
PROVIDE MINIMUM OF 4 ATTACHMENT ANGLES (2 ON EITHER SIDE OF LADDER RAIL) TO CONNECT LADDER TO RISER EXTENSION



**RISER LADDER DETAIL**  
NOT TO SCALE



**NOTE:**  
THIS DRAWING IS INTENDED TO APPLY TO LADDERS INSTALLED IN RISERS HAVING A DIAMETER OF 30" OR LARGER. DUE TO SPACE CONSTRAINTS AND LIMITED ACCESSIBILITY, THE PRACTICALITY AND SUITABILITY OF UTILIZING RISERS SMALLER THAN 30" DIAMETER AND/OR INCORPORATING LADDERS IN THESE SMALLER DIAMETER RISERS SHOULD BE ADDRESSED BY THE OWNER AND PROJECT ENGINEER



CBC ENGINEERS & ASSOCIATES, LTD.  
TBPE FIRM NUMBER F-16105

Approved By	Date	Rev.	Date	By	Description
MTH	12/5/19				
Project No.	Rev.				
CBC-22908	-				

The design and information shown on this drawing is provided as a service to the project owner, engineer and contractor by Contech Engineered Solutions LLC ("Contech"). Neither this drawing, nor any part thereof, may be used, reproduced or modified in any manner without the prior written consent of Contech. Failure to comply is done at the user's own risk and Contech expressly disclaims any liability or responsibility for such use.

If discrepancies between the supplied information upon which the drawing is based and actual field conditions are encountered as site work progresses, these discrepancies must be reported to Contech immediately for re-evaluation of the design. Contech accepts no liability for designs based on missing, incomplete or inaccurate information supplied by others.

MARK	DATE	REVISION DESCRIPTION	BY
1	10/15/2019	STUB SIZE CHANGE	SJ

**CONTECH**  
ENGINEERED SOLUTIONS LLC  
www.ContechES.com  
11815 NE Glenn Widing Drive, Portland, OR 97220  
800-548-4667 503-240-3393 800-561-1271 FAX

**CONTECH**  
CMP DETENTION SYSTEMS  
CONTECH CONTRACT DRAWING

11815 NE GLENN WIDING DRIVE, PORTLAND, OR 97220 - 577163-010  
CHICK FIL A - LAKESHORE COMMONS  
ROCKWALL, TX  
SITE DESIGNATION: UNDERGROUND STORAGE

PROJECT No.:	SEQ. No.:	DATE:
577163	010	10/15/2019
DESIGNED:	DRAWN:	
LMO	PDW/SJ	
CHECKED:	APPROVED:	
SHEET NO.:		
C5		OF C5