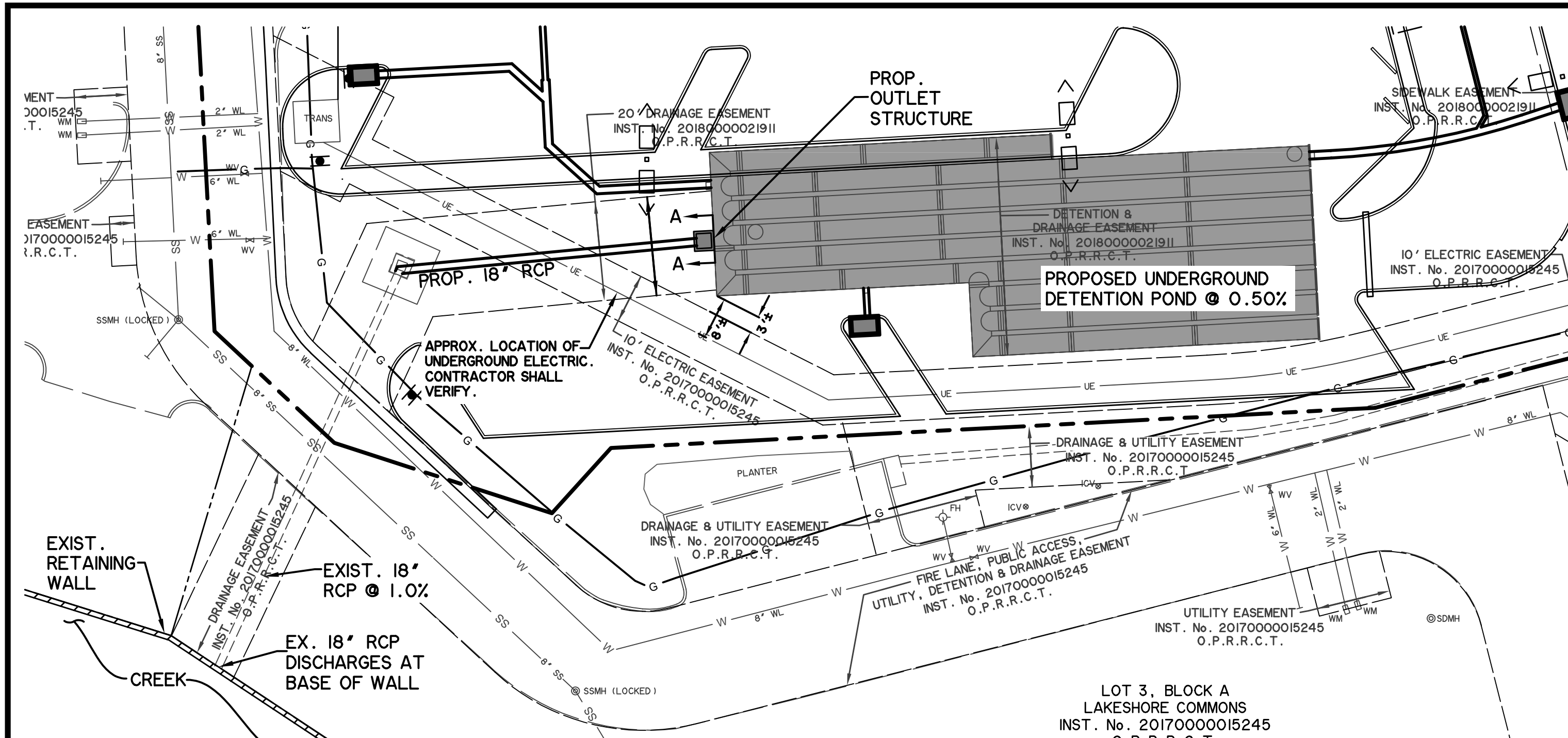
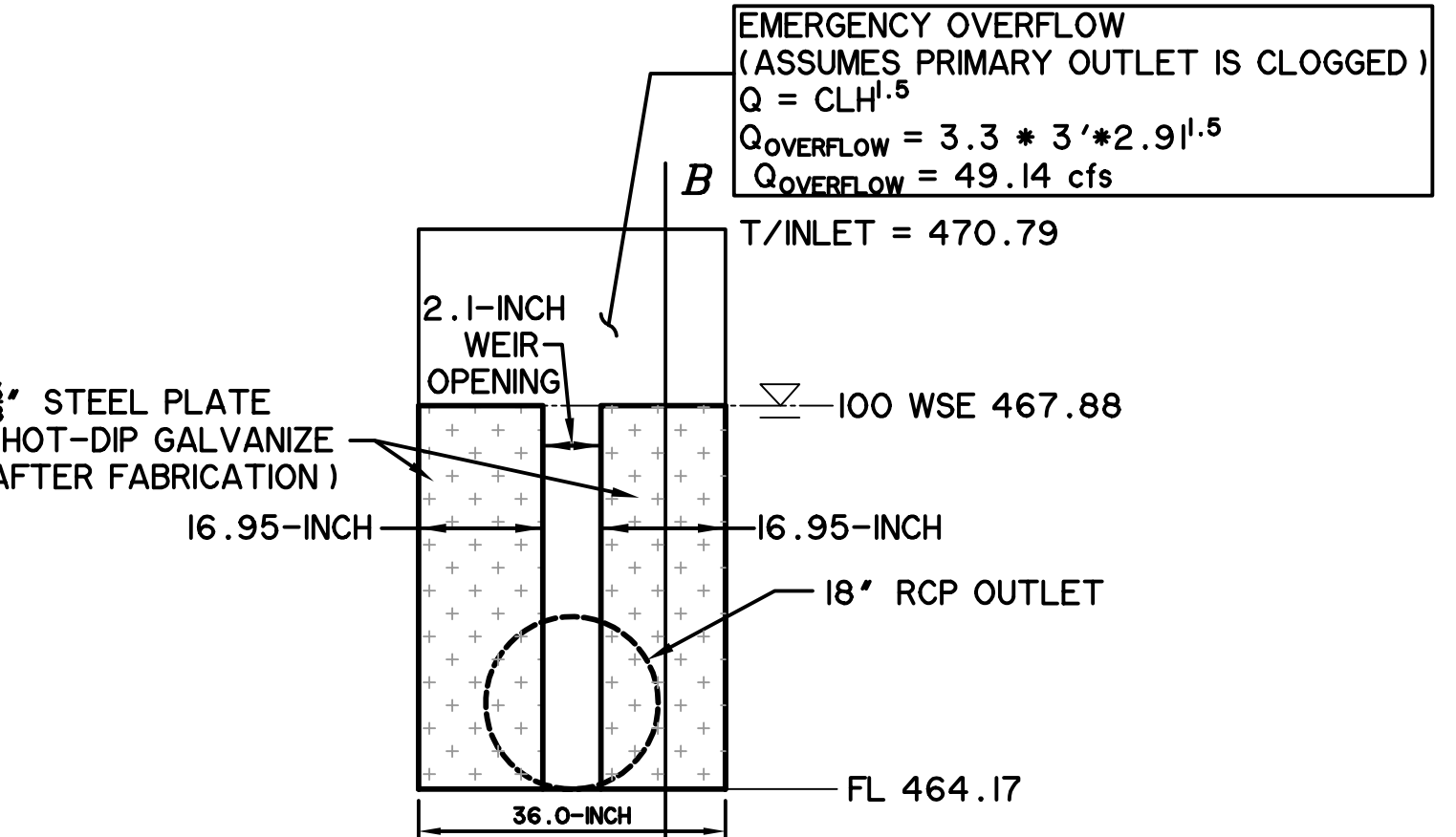
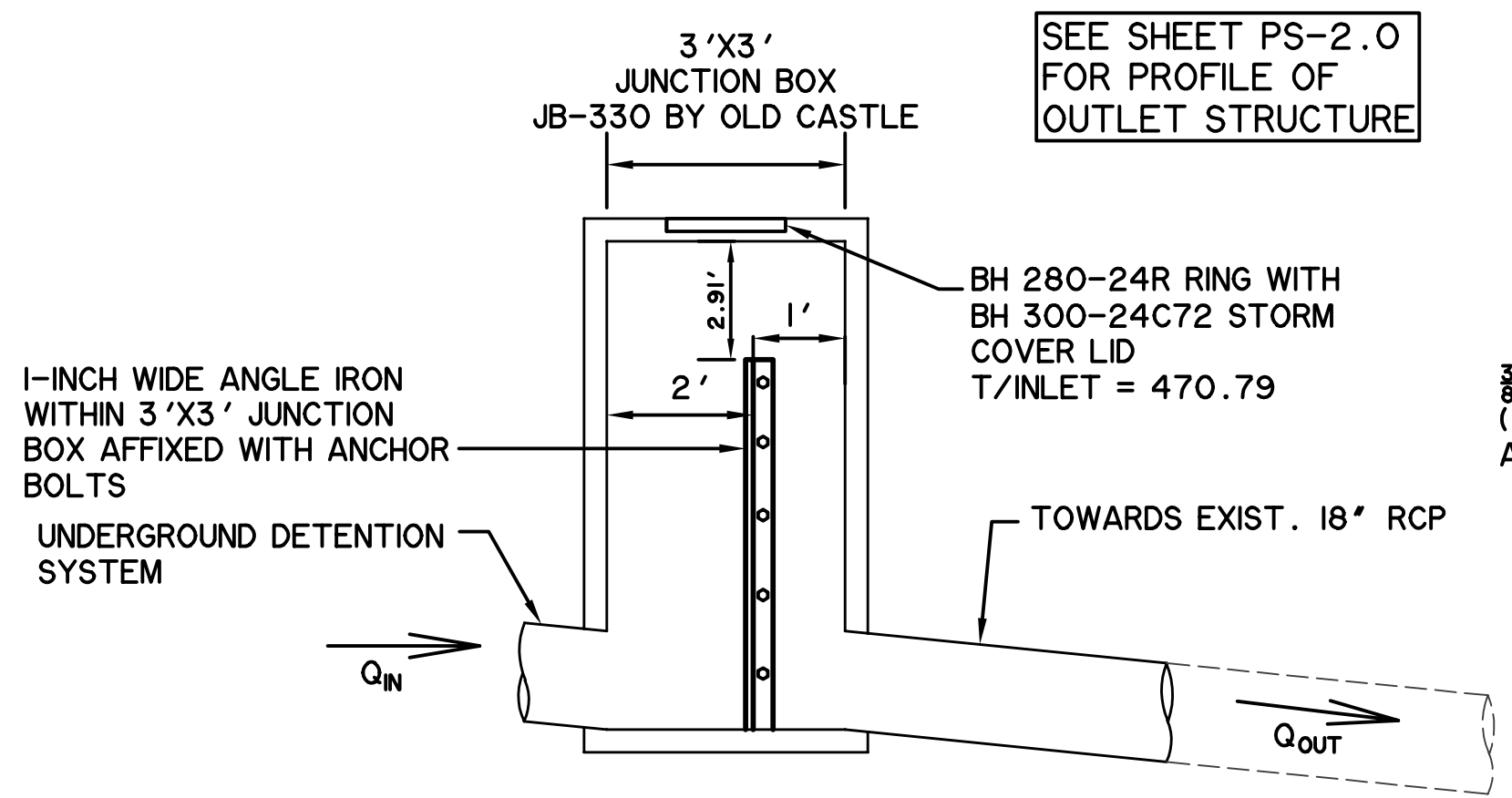
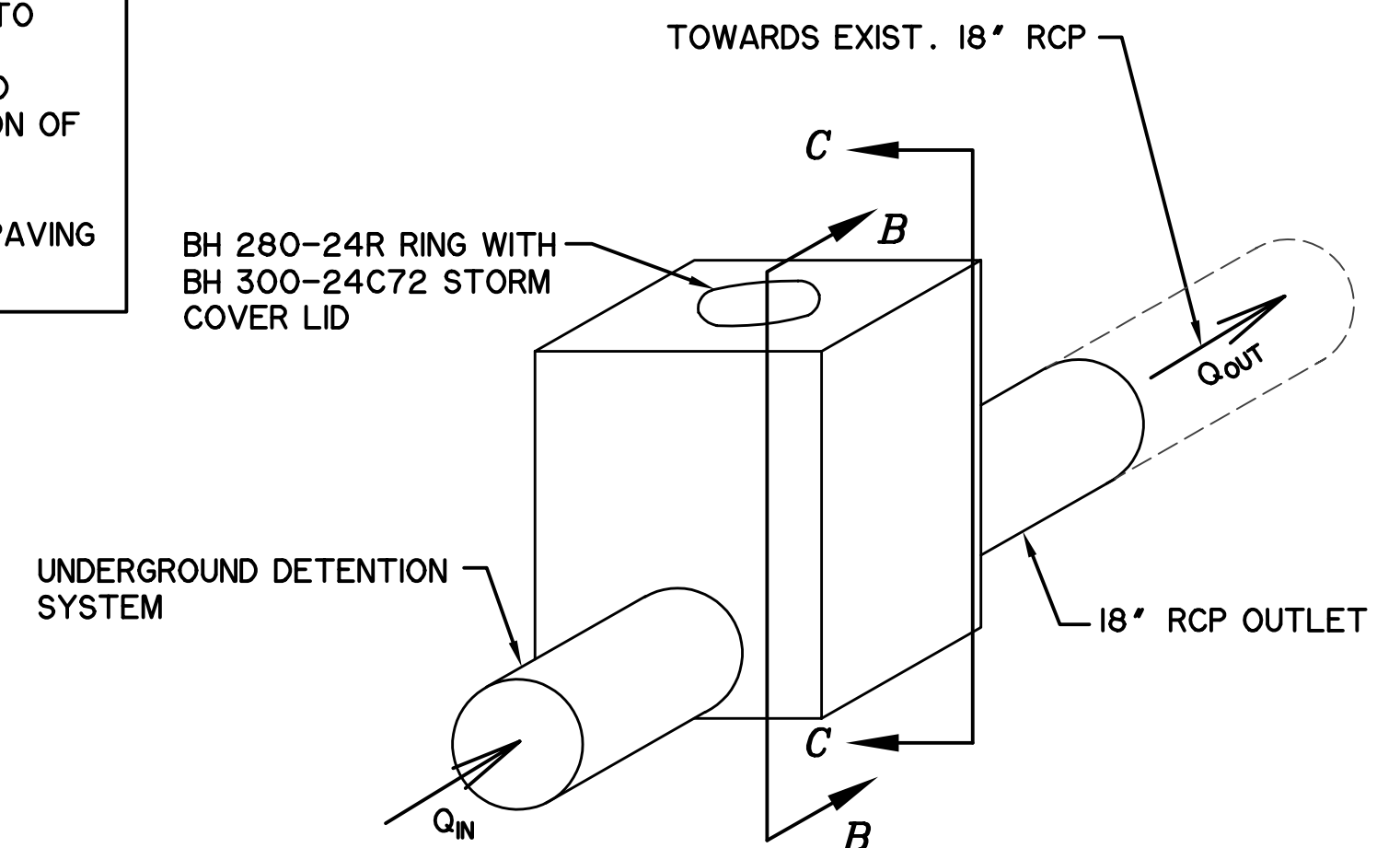


PRINTED: 1/2/2020 STB FILE: WIER-STORM DRAIN STB LAST SAVED: 1/2/2020 8:05 AM SAVED BY: ALANG FILE: PS-3.0 DETENTION POND PLAN 17144.DWG



- EXISTING DETENTION POND SHALL CONTINUE TO FUNCTION THROUGH CONSTRUCTION AND THE CONTRACTOR SHALL PROVIDE UNINTERRUPTED DETENTION VOLUME DURING THE INSTALLATION OF UNDERGROUND DETENTION SYSTEM.
- UNDERGROUND DETENTION SYSTEM SHALL BE INSTALLED AND FUNCTIONING PRIOR TO ANY PAVING INSTALLATION INCLUDING SLAB.



Q (release) = $CLH^{1.5}$
 $Q (release) = 3.32 * (2.1 \text{ IN}/12 \text{ IN}) * (W.S.E.L. - 464.17)^{1.5}$

5 year		10 year	
W.S.E.L.	466.34 ft	W.S.E.L.	466.67 ft
Q(existing)	2.76 cfs	Q(existing)	3.30 cfs
Q(developed)	7.74 cfs	Q(developed)	9.01 cfs
Q(allowed)	2.58 cfs	Q(allowed)	3.08 cfs
Q(release)	1.86 cfs	Q(release)	2.30 cfs
CHECK	GOODSOLUTION	CHECK	GOODSOLUTION

25 year		100 year	
W.S.E.L.	467.06 ft	W.S.E.L.	467.88 ft
Q(existing)	3.72 cfs	Q(existing)	4.63 cfs
Q(developed)	10.53 cfs	Q(developed)	12.44 cfs
Q(allowed)	3.49 cfs	Q(allowed)	4.33 cfs
Q(release)	2.85 cfs	Q(release)	4.15 cfs
CHECK	GOODSOLUTION	CHECK	GOODSOLUTION

Qallow FROM CONSTRUCTION PLANS FOR LAKESHORE COMMONS, LOTS 1-4, BLOCK A, DRAINAGE CALCULATIONS - POND A, ALLOWABLE RELEASE RATES TABLE ON SHEET C-7, DATED, 7/31/2018.

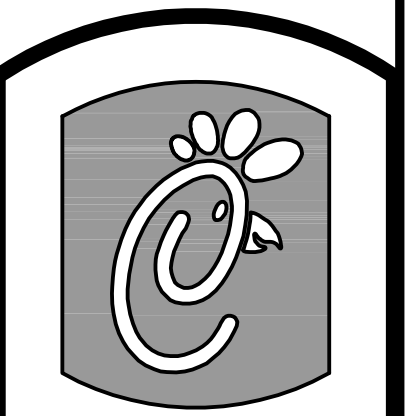
Qallow FROM CONSTRUCTION PLANS FOR LAKESHORE COMMONS, LOTS 1-4, BLOCK A, DRAINAGE CALCULATIONS - POND B, ALLOWABLE RELEASE RATES TABLE ON SHEET C-7, DATED, 7/31/2018.

Qallow FROM CONSTRUCTION PLANS FOR LAKESHORE COMMONS, LOTS 1-4, BLOCK A, DRAINAGE CALCULATIONS - POND B, ALLOWABLE RELEASE RATES TABLE ON SHEET C-7, DATED, 7/31/2018.

Qallow FROM CONSTRUCTION PLANS FOR LAKESHORE COMMONS, LOTS 1-4, BLOCK A, DRAINAGE CALCULATIONS - POND B, ALLOWABLE RELEASE RATES TABLE ON SHEET C-7, DATED, 7/31/2018.

RECORD DRAWING
June 9, 2020

To the best of our knowledge Wier & Associates, Inc., states this plan is As-Built. This information provided is based on surveying at the site and information provided by the contractor.



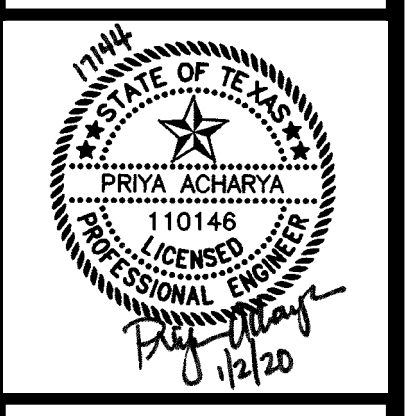
Chickadee
 5200 Buffington Rd.
 Atlanta Georgia,
 30349-2998

Revisions:
 Mark Date By
 12/17/19 RBC

ISSUED FOR CONSTRUCTION

Mark Date By
 12/17/19 RBC

Mark Date By
 12/17/19 RBC



LOT 2, BLOCK A
 LAKESHORE COMMONS
 1979 NORTH LAKESHORE DRIVE
 ROCKWALL, TEXAS
 STORE# 03897

STORE
 SERIES
 P13-LSR

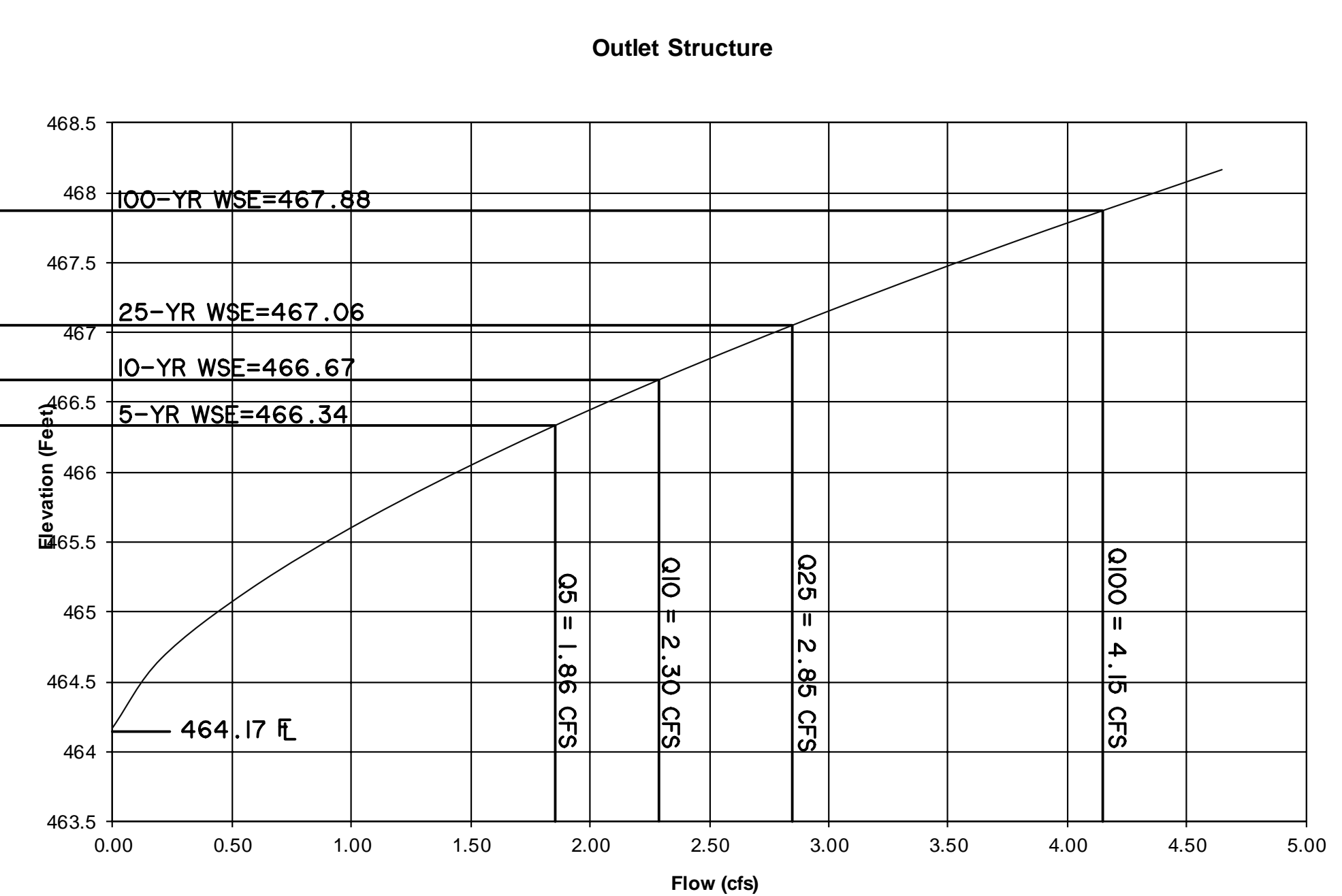
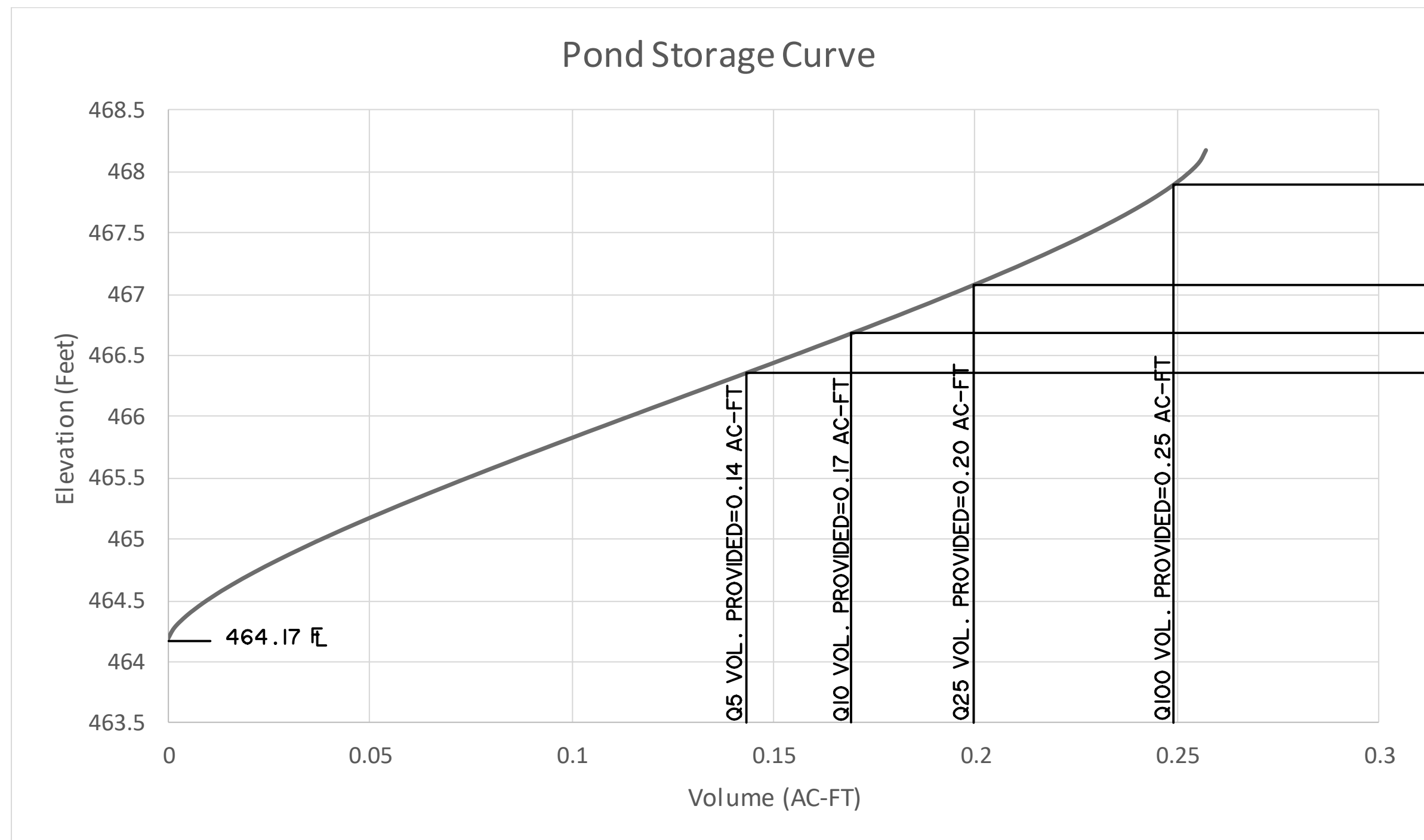
SHEET TITLE
 DETENTION
 POND
 PLAN

For Permit
 For Bid
 For Construction

Job No. : 17144
 Store : #03897
 Date : 1/2/2020
 Drawn By : RRW
 Checked By: PNA

Sheet

PS-3.0



CAUTION !!
 EXISTING UTILITIES ARE INDICATED ON THE PLANS FROM AVAILABLE INFORMATION. IT SHALL BE THE RESPONSIBILITY OF THE CONTRACTOR TO VERIFY THE LOCATION OF ALL UTILITIES, TO NOTIFY ALL UTILITY COMPANIES OF THE CONTRACTORS OPERATIONS, TO PROTECT ALL UTILITIES FROM DAMAGE, TO REPAIR ALL UTILITIES DAMAGED DUE TO THE CONTRACTORS OPERATIONS, AND TO NOTIFY THE ENGINEER PROMPTLY OF ALL CONFLICTS OF THE WORK WITH EXISTING UTILITIES.

VERTICAL DATUM NOTE:
 REFERENCE DATUM = NORTH AMERICAN VERTICAL DATUM (NAD) 88 UTILIZING THE RTK NETWORK ADMINSTRATED BY WESTERN DATA SYSTEMS
 SITE BENCHMARK NO. 1 AN "X" CUT ON THE SOUTHWEST CORNER OF THE CONCRETE PAD OF A TRAFFIC SIGNAL BOX LOCATED AT THE SOUTHWEST CORNER OF N LAKESHORE DR AND N GOLIAD ST., 4' +/- SOUTHWEST OF THE SOUTHWEST CORNER OF THE TRAFFIC SIGNAL BOX, 16' +/- SOUTH OF A FIBER OPTIC PEDESTAL, AND 17' +/- WEST OF THE TRAFFIC SIGNAL POLE.
 ELEVATION = 476.04'
 SITE BENCHMARK NO. 2 AN "X" CUT IN CONCRETE BACK OF CURB WEST SIDE OF ACCESS DRIVE WEST OF LOT 2, LAKESHORE COMMONS, 3' EAST OF FIRE HYDRANT AND 3'12" SOUTHWEST OF SANITARY SEWER MAN HOLE.
 ELEVATION = 471.87'
 SITE BENCHMARK NO. 3 AN "X" CUT IN PAVERS BRICK MEDIAN OF NORTH LAKESHORE DRIVE 345' DIRECTLY EAST OF A LIGHT POLE 176' WEST OF INTERSECTION WITH NORTH GOLIAD STREET.
 ELEVATION = 472.68'

PREPARED BY:
WIA WIER & ASSOCIATES, INC.
 ENGINEERS SURVEYORS LAND PLANNERS
 2201 E. LAMAR BLVD., SUITE 200E ARLINGTON, TEXAS 76006 METRO (817)467-7700
 Texas Firm Registration No. F-2776 www.WierAssociates.com