



Chick-fil-A

Chick-fil-A
5200 Buffington Road
Atlanta, Georgia 30349-2998



manley LAND DESIGN
Landscape Architecture
770.442.8171 tel
770.442.1123 fax
Manley Land Design, Inc.
51 Old Canton Street
Alpharetta, Georgia 30009
manleylanddesign.com



CHICK-FIL-A
Lakeshore
Hwy. 205 @ N. Lakeshore Drive
Rockwall, TX 75087

FSU# 03897

NO.	DATE	DESCRIPTION
1	8/3/18	City Comments
2	9/17/18	City Comments
3	10.5.18	City Comments
4	10/23/19	Revised Site Plan
5	11/14/19	Issued For Bid
6	12/17/19	Issued For Construction

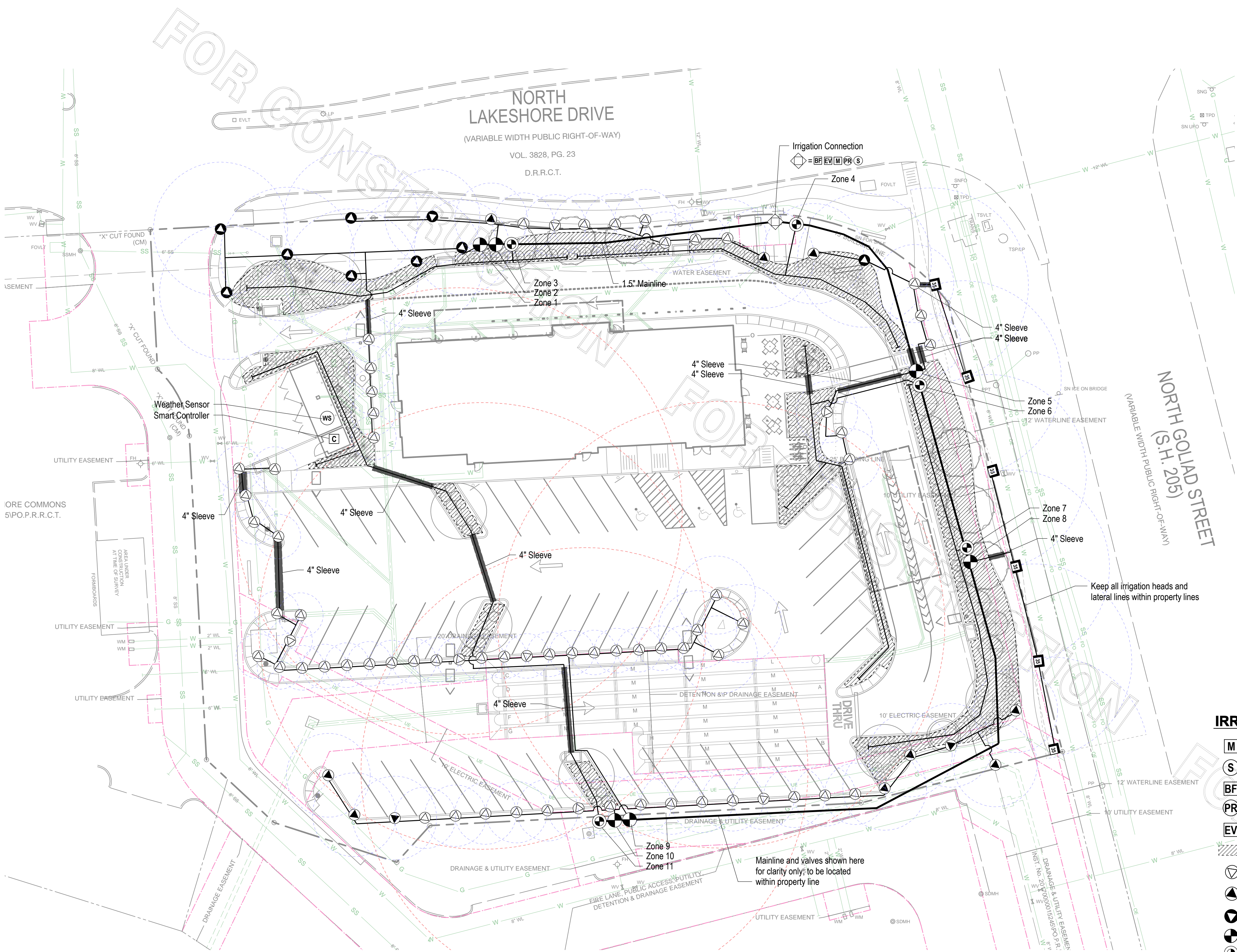
ISSUED FOR CONSTRUCTION

MLD PROJECT # 2018115
PRINTED FOR ISSUED FOR CONSTRUCTION
DATE 7.19.18
DRAWN BY ADN

Information contained on this drawing and in all digital files produced for above named project may not be reproduced in any manner without express written or verbal consent from authorized project representatives.

Irrigation Plan

SHEET NUMBER
L-200



IRRIGATION ZONES

SMART CONTROLLER					
1.....	11.59 GPM	6.....	DRIP	11.....	DRIP
2.....	11.57 GPM	7.....	DRIP		
3.....	DRIP	8.....	13.35 GPM		
4.....	DRIP	9.....	17.40 GPM		
5.....	13.82 GPM	10.....	16.21 GPM		

NOTE:
SEE SHEET L-201 FOR IRRIGATION DETAILS

IRRIGATION NOTES

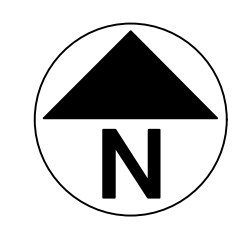
- Irrigation contractor is responsible for locating and protecting all underground utilities prior to trenching.
- Pressure regulator required by local code if static water pressure at point of connection for site is greater than 80 psi.
- Irrigation meter and backflow preventor to be provided by the general contractor.
- All valves to be located in valve box with cover at grade. Locate box in grass area when possible.
- Automatic controller and weather sensor to be located in the storage room and trash enclosure respectively. Weather Sensor to be free from obstructions and exposed to the weather.
- All pipes, automatic valves, backflow preventor, manual valve and meter to be located within property lines. Shown outside on drawing for clarity only.
- 45 psi required per rotor station, 30 psi required per spray station, 40 psi required per drip station. All spray and rotor bodies to have PRS (In-stem pressure regulation) as indicated in the legend.
- Pop-up height of spray heads to be as follows: 4" in Turf Zones, 12" in Shrub Zones, and 12" in Seasonal/color beds. Rotor height to be 4". MPR Rotor Nozzle size is indicated on drawing for each rotor.
- 4" SCH 40 PVC sleeves to be located as shown on drawing. Extend sleeve 8" beyond back of curb or pavement. Sleeves to be located and exposed by the general contractor prior to start of irrigation installation.
- All 1.5" mainlines (class 200 PVC pipe) to have a minimum of 18" cover.
- All lateral and sub-main pipe (class 200 PVC pipe) to have a minimum of 12" and a maximum of 18" cover.
- No rocks, boulders, or other extraneous materials to be used in backfilling trenches.
- All threaded joints to be coated with Teflon Tape or Liquid Teflon.
- All lines to be thoroughly flushed before installation of sprinkler heads.
- Must use products specified on this drawing, unless otherwise approved by the Landscape Architect. Refer to the Irrigation Legend for product specs.
- Irrigation is to be installed as designed, unless otherwise approved by the Landscape Architect.
- All pipe, valves, drip, spray heads, rotors, controllers, and weather sensors to be installed as per manufacturers specifications. For any questions on Rainbird products or installation of rainbird products call Donn Mann 520-904-1146
- Irrigation contractor shall provide an as-built drawing to the landscape architect; this drawing shall be overnighted within 24 hours of completion of installation.
- Irrigation Contractor to perform a walk-thru inspection with the Store Operator of the functioning system prior to opening but no later than one week after opening.

IRRIGATION LEGEND

M	1" IRRIGATION METER	PROVIDED BY THE GENERAL CONTRACTOR
S	1" MANUAL SHUTOFF VALVE	1 REQUIRED
BF	BACKFLOW PREVENTER	AS REQUIRED BY CITY
PR	1" PRESSURE REGULATOR	AS REQUIRED
EV	1" ELECTRICAL MASTER VALVE	1 REQUIRED
LANDSCAPE DRIPLINE		RAINBIRD XFD-09-18
▽	45-270 ADJUSTABLE ARC ROTARY NOZZLE - 8'-14" RADIUS	RAINBIRD RD1800-S-P45-RVAN14
▲	45-270 ADJUSTABLE ARC ROTARY NOZZLE - 13'-18" RADIUS	RAINBIRD RD1800-S-P45-RVAN18
●	45-270 ADJUSTABLE ARC ROTARY NOZZLE - 17'-24" RADIUS	RAINBIRD RD1800-S-P45-RVAN1724
⊕	1" ELECTRICAL VALVE	RAINBIRD 100-PGA
⊙	1" DRIP CONTROL ZONE VALVE	RAINBIRD XCZ-100-PRB-COM
C	AUTOMATIC SMART CONTROLLER	RAINBIRD ESP-SMTe (120V required); expansion modules as needed
WS	WEATHER SENSOR	INCLUDED W/IT CONTROLLER
—	MAINLINE AND LATERAL LINE	CLASS 200 PVC IRRIGATION PIPE AND FITTINGS - 1.5" MAINLINE, 1" LATERAL LINES
▬	IRRIGATION SLEEVE - 4" SCH 40 PVC	4" SCH 40 PVC SLEEVE UNDER PAVEMENT installation of sleeves by contractor in location as shown on plan.

Irrigation contractor shall provide an as built drawing to the landscape architect. This drawing shall be overnighted to Manley Land Design, Inc within 24 hours of completion of installation.

Irrigation Contractor to perform a walk-thru inspection with the Store Operator of the functioning system prior to opening but no later than one week after opening.



0 20 40 FT