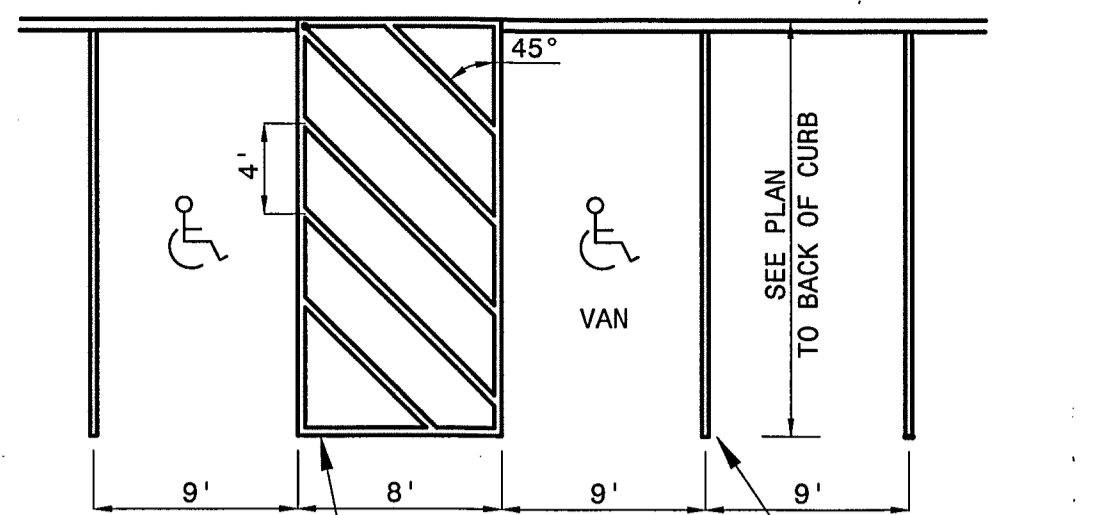
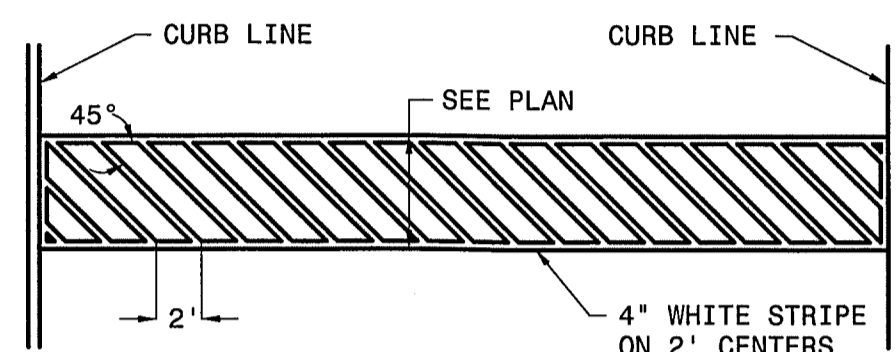


TYPICAL WHEELSTOP DETAIL  
N.T.S.

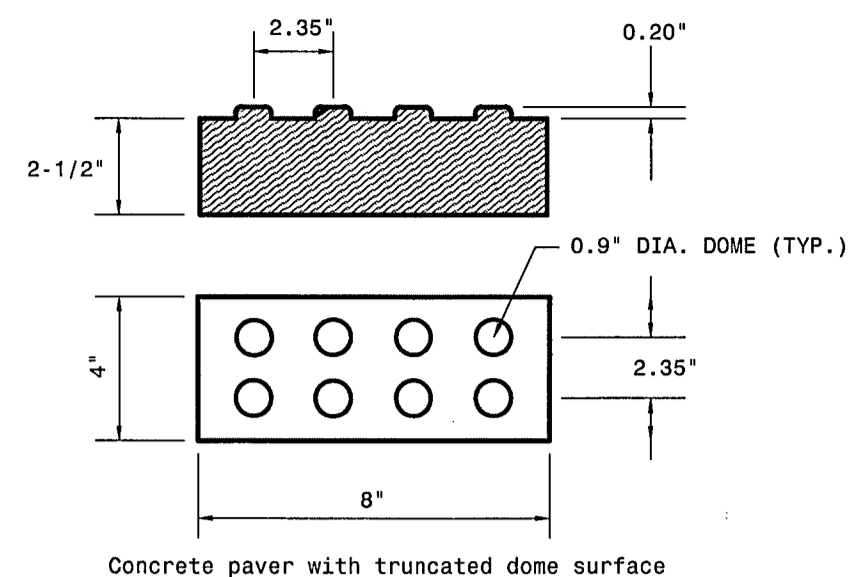


4" WHITE STRIPE ON 4' CENTERS  
4" WHITE STRIPE @ STANDARD SPACES  
Symbols and striping shall meet current TDLR standards.

TYPICAL STRIPING PLAN  
N.T.S.



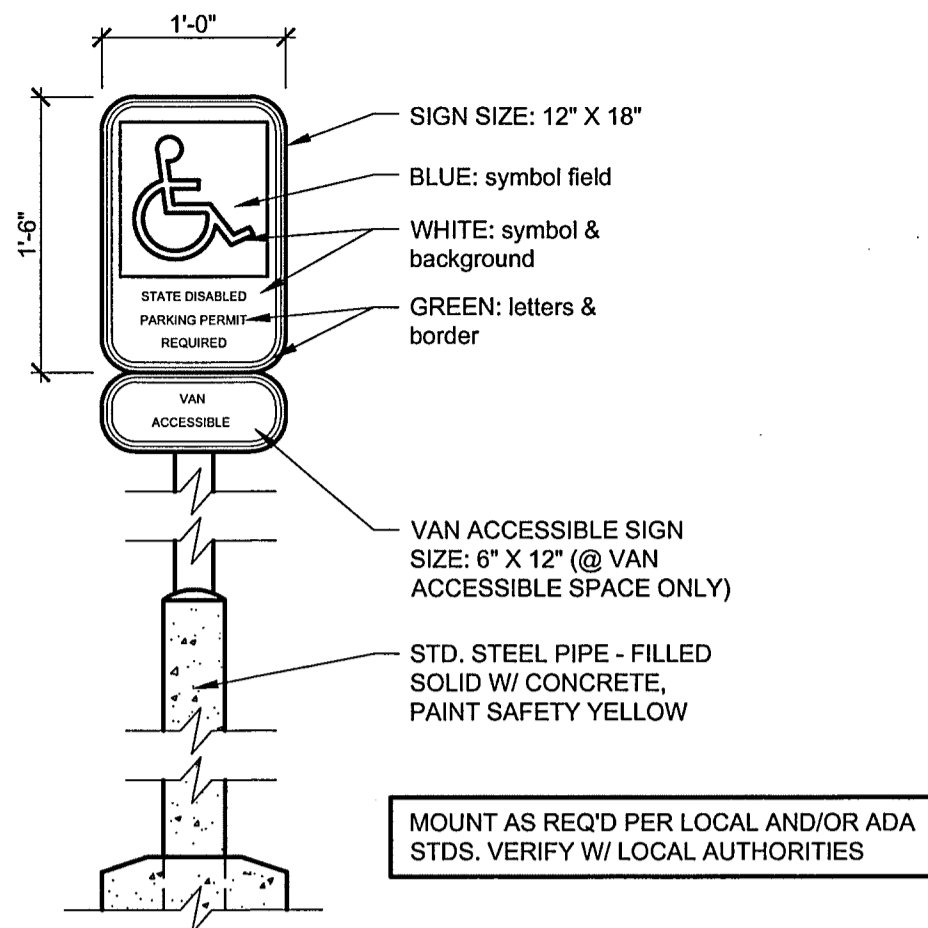
CROSSWALK STRIPING DETAIL  
N.T.S.



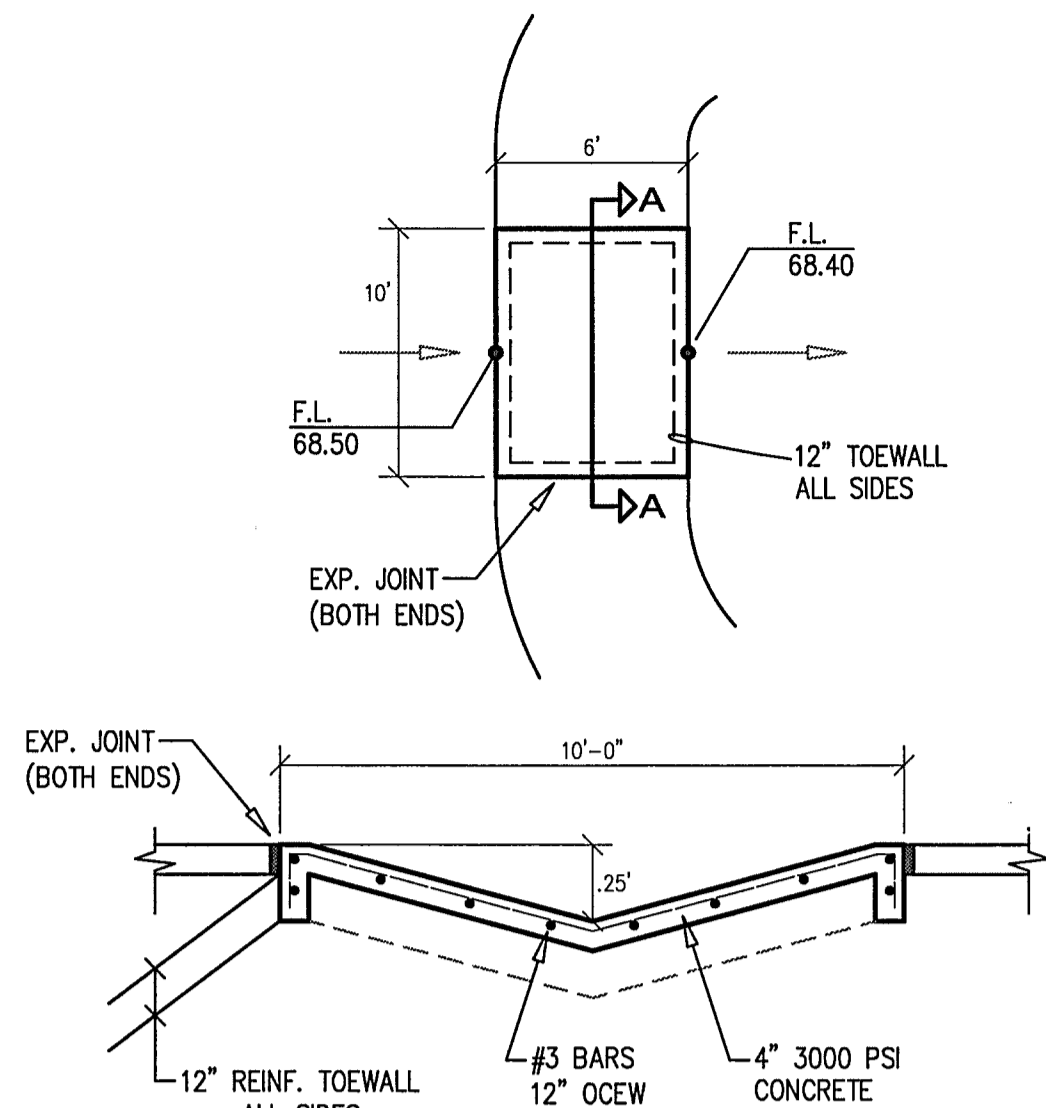
- Concrete paver with truncated dome surface
- NOTES:  
1. Ramps shall have maximum slope of 12:1 for 6' tapers.  
2. Ramp color and texture shall meet current TDLR standards.  
3. Symbols and striping shall meet current TDLR standards.  
4. Truncated domes shall comply with TAS 4.29.2 shall extend the full width and 2' in depth of the curb ramp.  
5. Parking stalls and aisle shall not slope more than 2% in any direction.  
6. Sidewalk shall have 2% max. crossfall and 5% max longitudinal slope.

**General Notes**  
Concrete paver units shall meet all requirements of ASTM C-936, C-33, and shall be laid in a two by two unit basket weave pattern, unless shown otherwise in the plans. Domes shall be aligned in the direction of pedestrian travel. Concrete paver units shall have a truncated dome top surface for detectable warning to pedestrians. Concrete paver unit color for the ramp shall be a contrasting color that provides a light reflective value that significantly contrasts with the adjacent surfaces. The color of the concrete paver units shall be per owner/ Architect specs. (Adjacent surfaces include side flares).  
Concrete paver units shall be saw cut only and any cut unit shall not be less than 25 percent of a full unit.

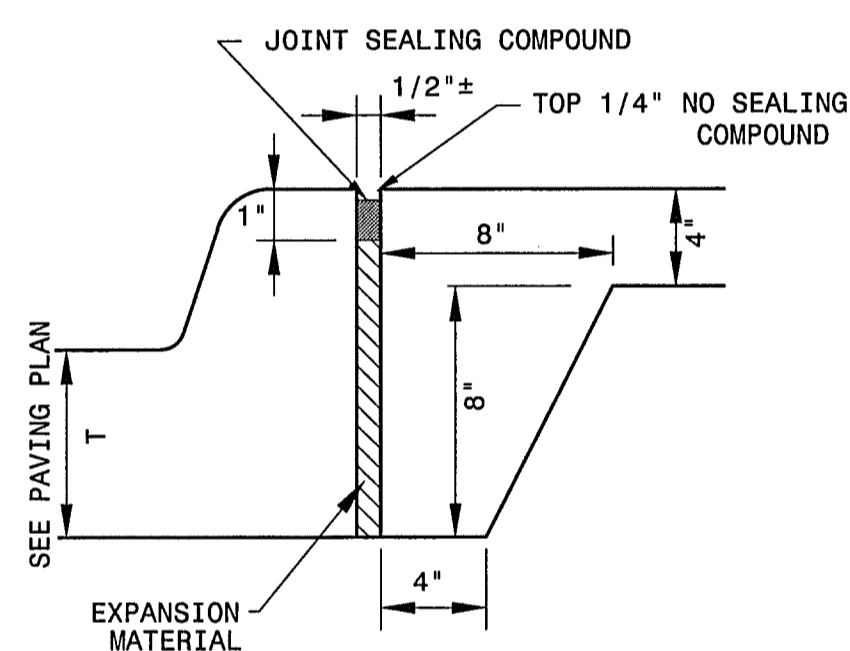
ON-SITE BARRIER-FREE RAMP DETAILS  
N.T.S.



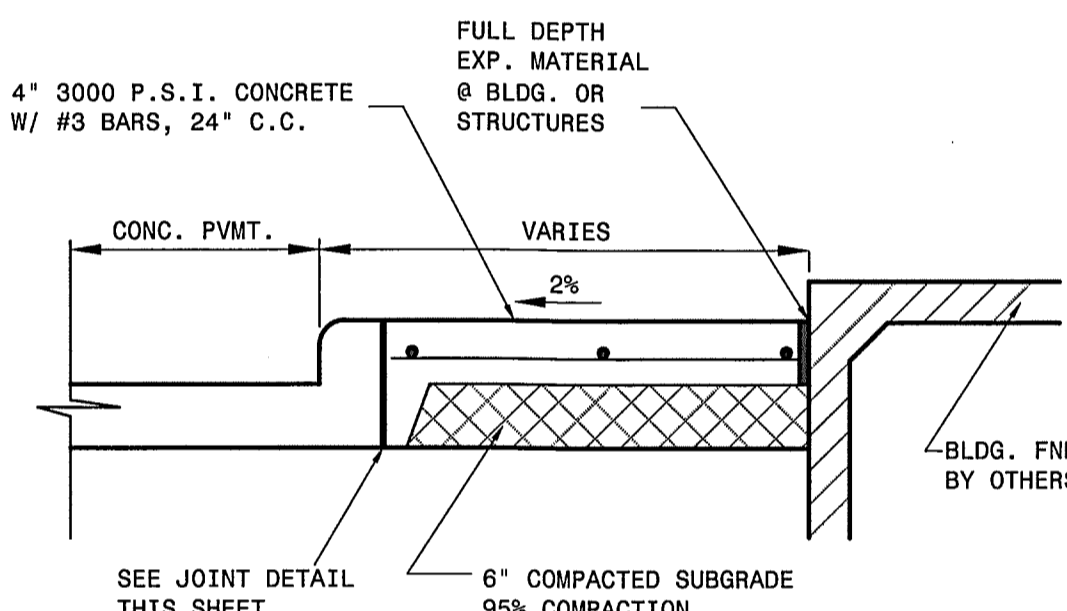
DISABLED PARKING SIGNS



SECTION A-A  
LOW WATER CROSSING DETAIL

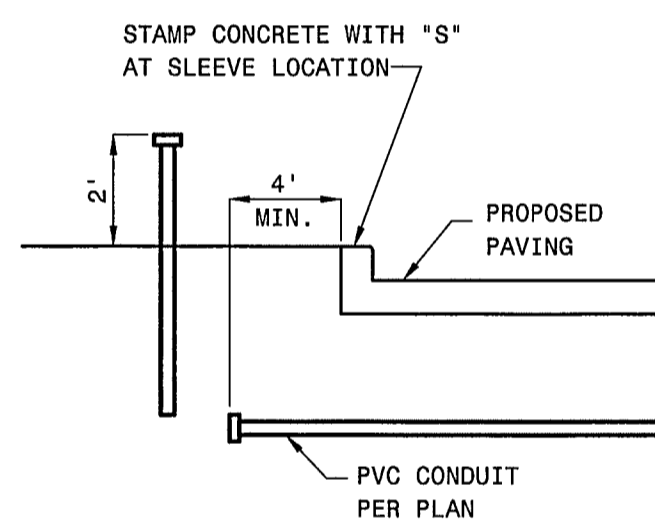


SIDEWALK / CURB JOINT DETAIL  
N.T.S.



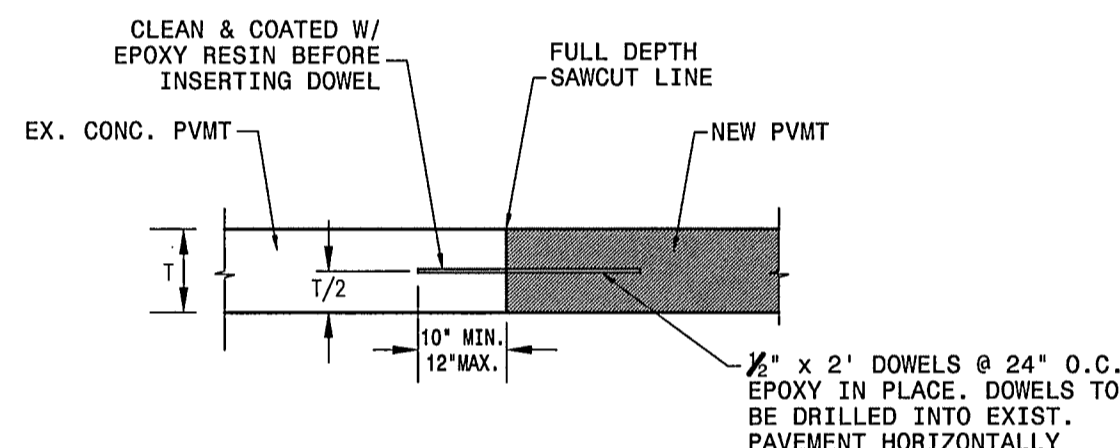
4" 3000 P.S.I. CONCRETE W/ #3 BARS, 24" C.C.  
FULL DEPTH EXP. MATERIAL @ BLDG. OR STRUCTURES  
CONC. PVMT.  
VARIES  
2%  
BLDG. FNDN. BY OTHERS  
6" COMPACTED SUBGRADE 95% COMPACTION  
SEE JOINT DETAIL THIS SHEET  
GROOVED CONTROL JOINTS @ 5' MAX. SPACING, EXP. JOINTS @ 48' MAX. SPACING AND @ INTERSECTIONS.

SIDEWALK SECTION  
N.T.S.

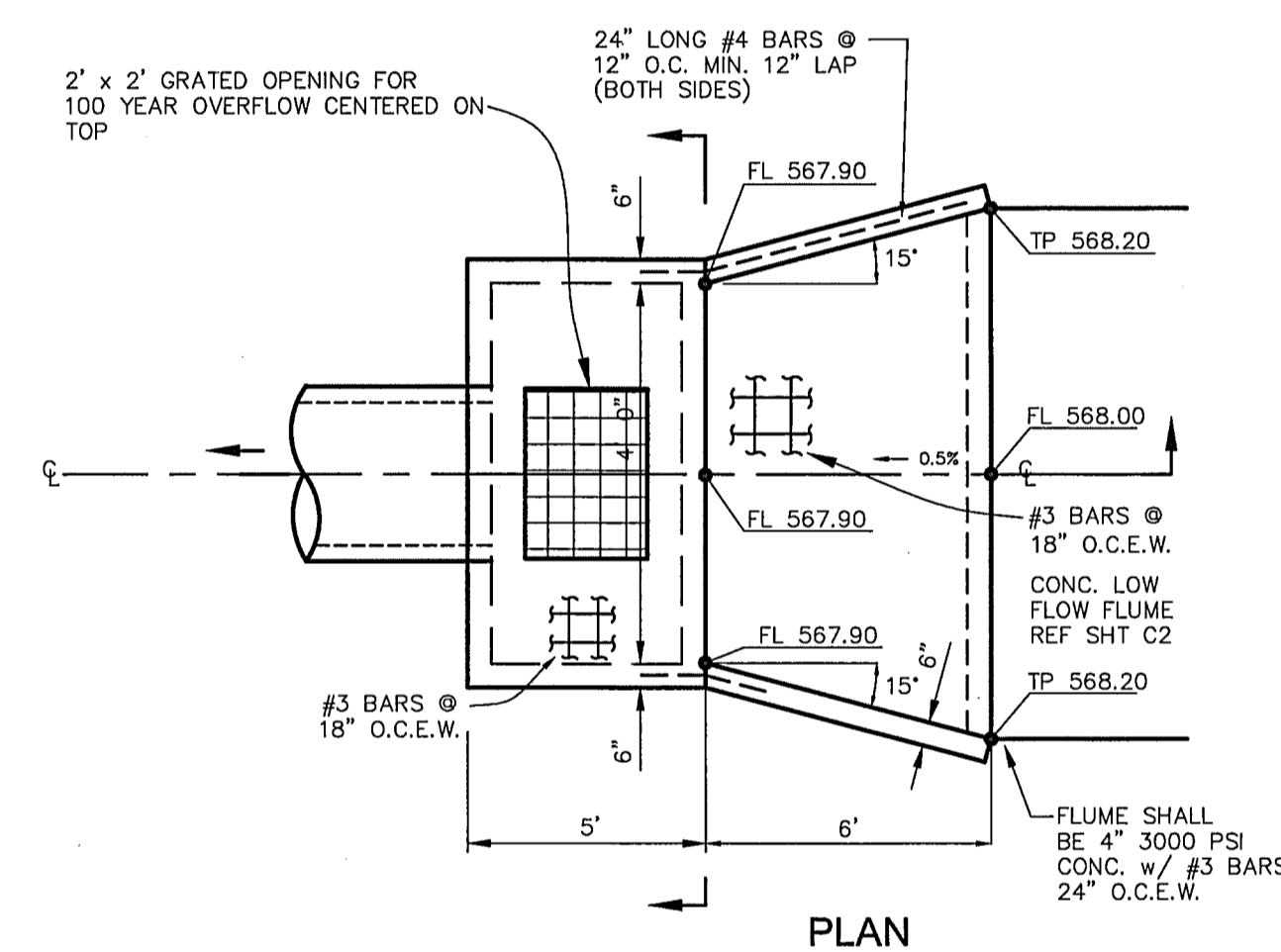


NOTE\*  
DO NOT GLUE CAP. INSTALL A PULL CORD IN EACH SLEEVE.  
ALL PIPE SHALL BE SCH. 40 P.V.C.  
SLEEVES SHALL HAVE A MINIMUM COVER OF 30 INCHES.

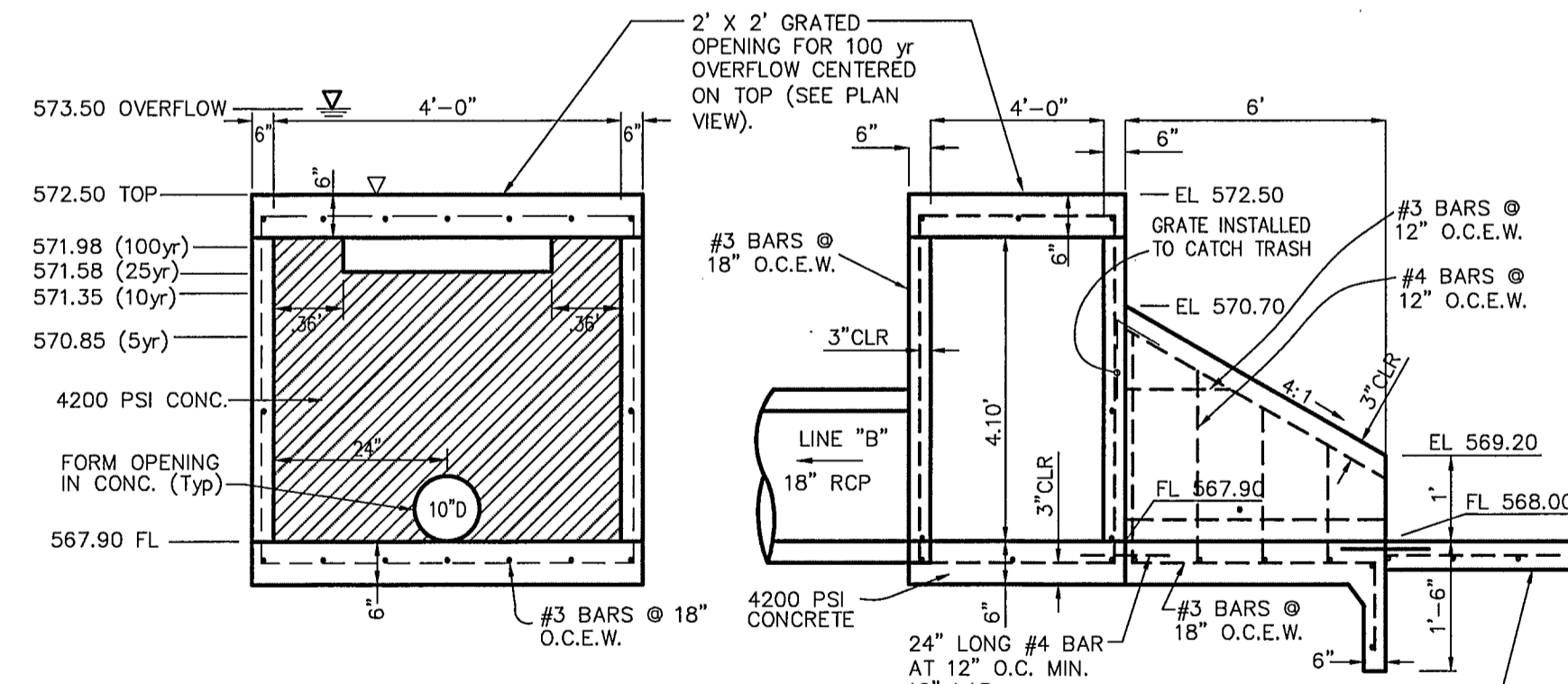
SLEEVE DETAIL  
N.T.S.



ANCHOR JOINT DOWEL-ON DETAIL  
N.T.S.



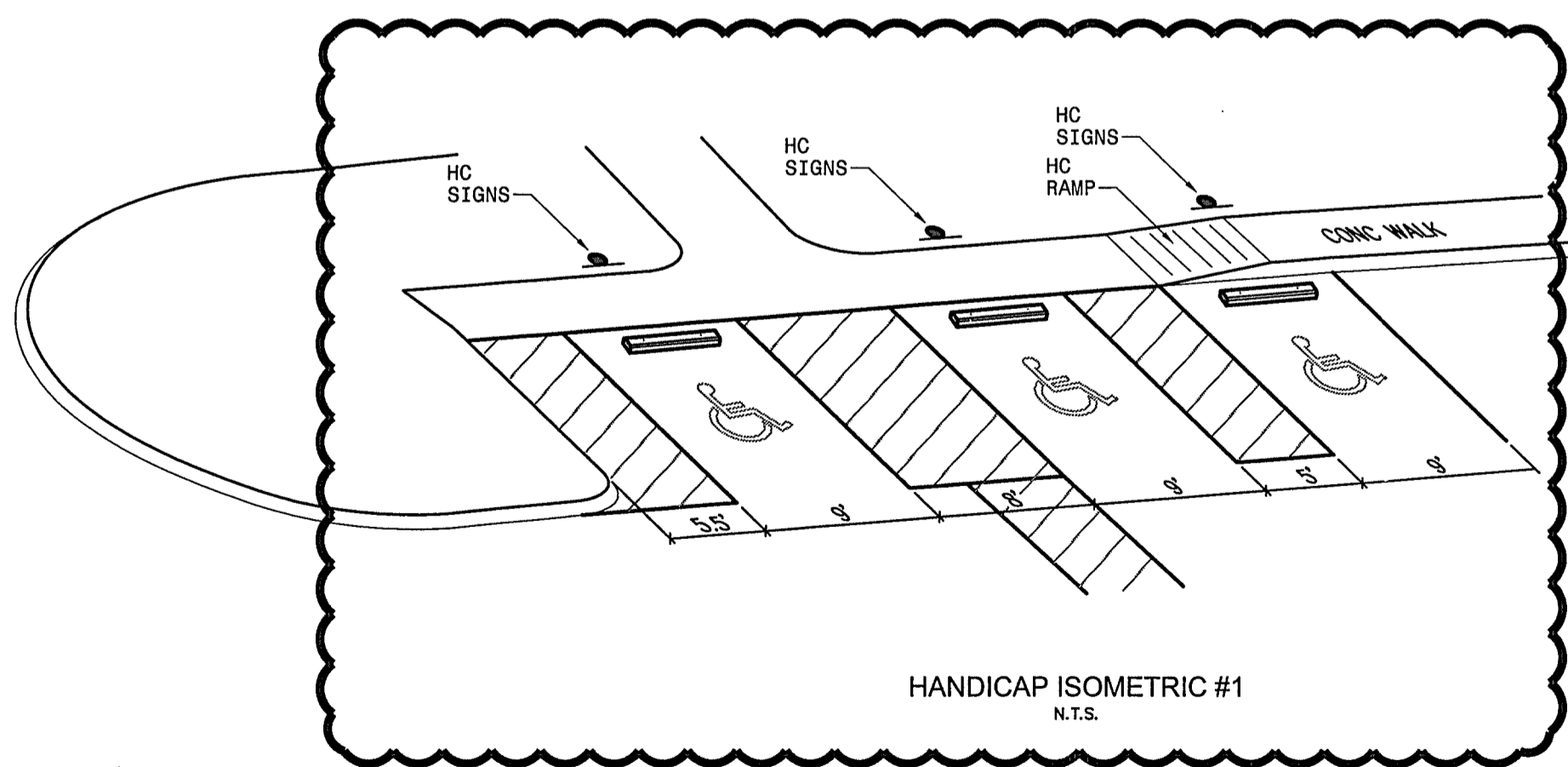
PLAN



SECTION A-A  
N.T.S.

SECTION B-B  
N.T.S.

DETENTION POND OUTLET STRUCTURE DETAIL



HANDICAP ISOMETRIC #1  
N.T.S.

**RECORD DRAWINGS**  
TO THE BEST OF OUR KNOWLEDGE BINKLEY & BARFIELD - C&P, INC., HEREBY STATES THAT THIS PLAN IS AS-BUILT. THIS INFORMATION PROVIDED IS BASED ON SURVEYING AT THE SITE AND INFORMATION PROVIDED BY THE CONTRACTOR.  
DATE: 7-1-2014 SIGNATURE: *Thomas P. Jones*  
BINKLEY & BARFIELD - C&P, INC.

S:\152000 Lakes Reg MHMR Center\CS - 152000-SITE DETAILS.dwg - GENERAL NOTES Plotted Jun 25, 2014 at 3:45pm by kenderaan | Last Saved by kenderaan

Designed By:	RAA	Job No.:	BC12049
Drawn By:	BS	Date:	NOV. 30, 2012
Checked By:	TPJ	Scale:	1"=30' H (22"X34")
App.:	T.P.J.	Approved By:	

ARCHITECT:  
**JOE CREWS**  
28 MORRIS LN  
TEXARKANA, TX 75503  
903-223-8000, EXT. 1450  
JOE@JOECREWS.COM

The seal appearing on this document was authorized by Thomas P. Jones, P.E. 58887. Alteration of a sealed document without proper notification to the responsible engineer is an offense under the Texas Engineering Practice Act. Mar. 28, 2013

**Binkley & Barfield | C&P**  
consulting engineers  
1801 Gateway Blvd, Suite 101 Richardson Texas 75080 www.bbcp.com  
Firm Registration #F-3185

LAKES REGIONAL MHMR CENTER  
MR. DON SMITH  
P.O. BOX 747  
TERRELL, TX 75160  
972-388-2000, EXT. 1196  
DONS@LRMHMRC.ORG

SITE DETAILS  
BLOCK A, LOT 4, COLUMBIA PARK ADDITION  
ROCKWALL, TEXAS  
LAKES REGIONAL  
MENTAL HEALTH MENTAL RETARDATION CENTER  
ROCKWALL, TEXAS

Sheet No:  
**C9**  
of NS