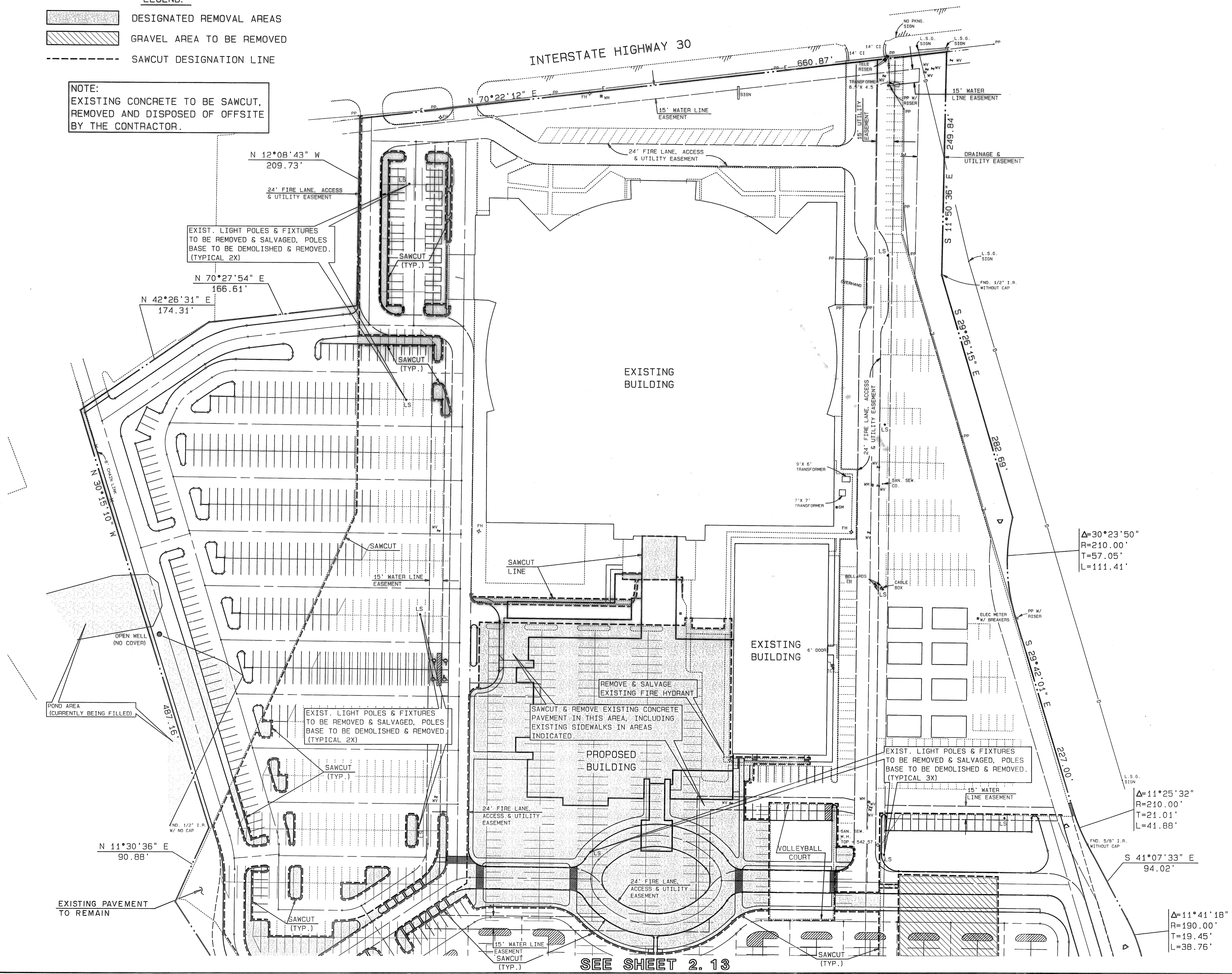


**LEGEND:**

- DESIGNATED REMOVAL AREAS
- GRAVEL AREA TO BE REMOVED
- SAWCUT DESIGNATION LINE

**NOTE:**  
EXISTING CONCRETE TO BE SAWCUT, REMOVED AND DISPOSED OF OFFSITE BY THE CONTRACTOR.

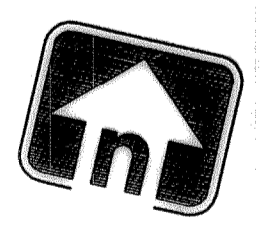
**CAUTION:**  
EXISTING UTILITIES AND UNDERGROUND FACILITIES OF THESE PLANS HAVE BEEN LOCATED FROM REFERENCE INFORMATION AND AS-BUILT PLANS. IT SHALL BE THE RESPONSIBILITY OF THE CONTRACTOR TO VERIFY HORIZONTAL AND VERTICAL LOCATION OF ALL EXISTING UTILITIES PRIOR TO CONSTRUCTION. THE CONTRACTOR SHALL TAKE NECESSARY PRECAUTIONS TO PROTECT ALL EXISTING UTILITIES AND WILL BE RESPONSIBLE FOR ANY DAMAGE TO SAID UTILITIES. THE CONTRACTOR SHALL NOTIFY ALL UTILITY COMPANIES PRIOR TO CONSTRUCTION.



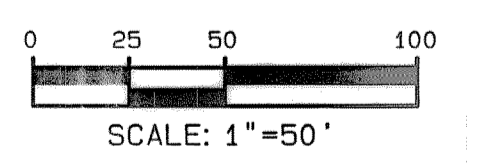
**RECORD DRAWING**  
This is to certify that changes and corrections have been made to conform to the contractor's record of this project.  
*[Signature]* 4/12/00  
Signed Date  
Graham Associates, Inc.  
CONSULTING ENGINEERS & PLANNERS



*[Signature]*  
1/14/99



2.12



DEMOLITION PLAN

**LOT 1, BLOCK A  
LAKE POINTE  
BAPTIST CHURCH**

CITY OF ROCKWALL  
ROCKWALL COUNTY, TEXAS

**Graham Associates, Inc.**  
CONSULTING ENGINEERS & PLANNERS  
616 SIX FLAGS DRIVE, SUITE 400  
ARLINGTON, TEXAS 76011 (817) 640-8535

Date: NOV. 1998  
File: 9762-1011  
Drawn By: G.A.I. Sheet 6 Of 27

SEE SHEET 2.13