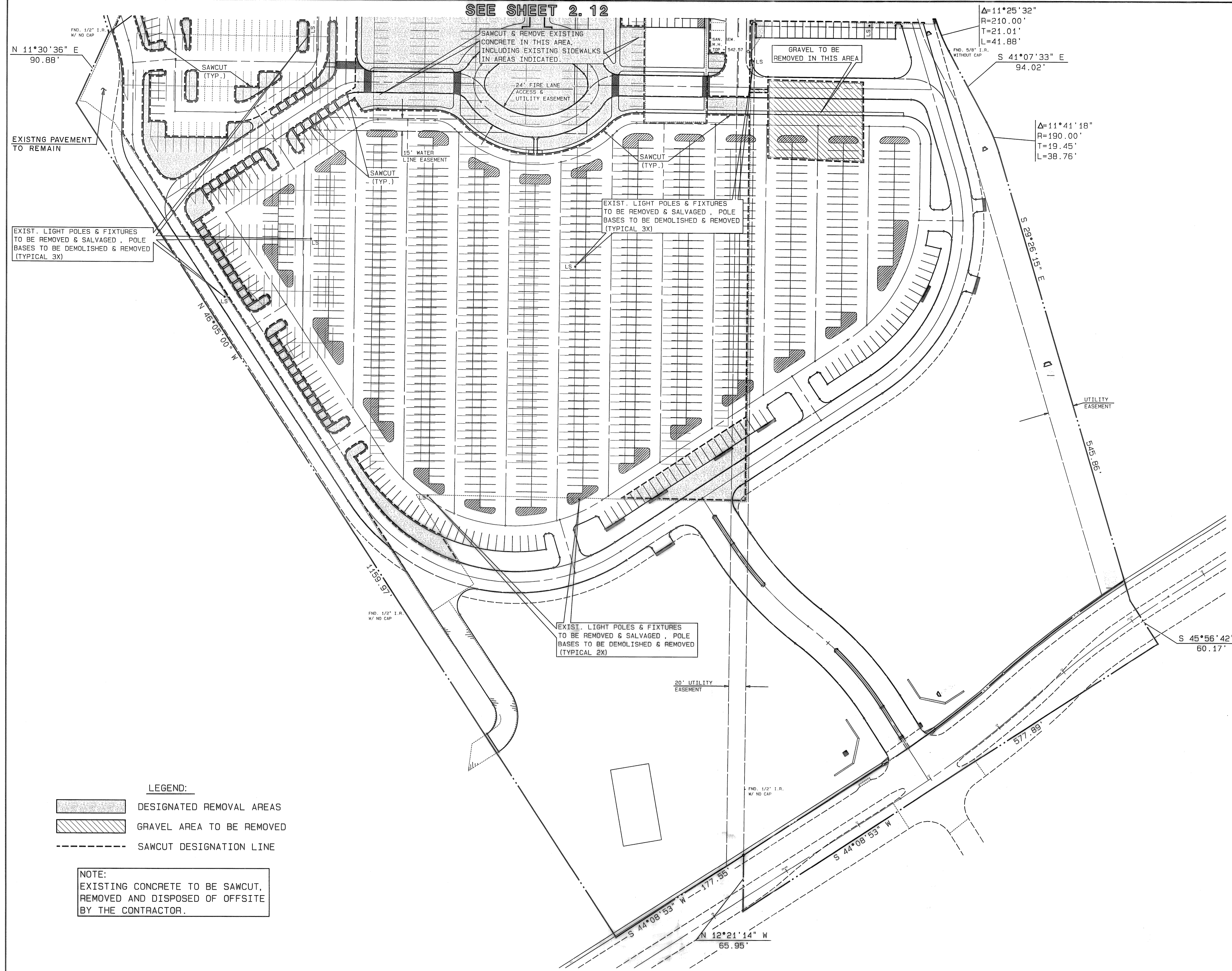


SEE SHEET 2.12

**CAUTION:**  
 EXISTING UTILITIES AND UNDERGROUND FACILITIES OF THESE PLANS HAVE BEEN LOCATED FROM REFERENCE INFORMATION AND AS-BUILT PLANS. IT SHALL BE THE RESPONSIBILITY OF THE CONTRACTOR TO VERIFY HORIZONTAL AND VERTICAL LOCATION OF ALL EXISTING UTILITIES PRIOR TO CONSTRUCTION. THE CONTRACTOR SHALL TAKE NECESSARY PRECAUTIONS TO PROTECT ALL EXISTING UTILITIES AND WILL BE RESPONSIBLE FOR ANY DAMAGE TO SAID UTILITIES. THE CONTRACTOR SHALL NOTIFY ALL UTILITY COMPANIES PRIOR TO CONSTRUCTION.



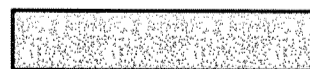


EXIST. LIGHT POLES & FIXTURES TO BE REMOVED & SALVAGED, POLE BASES TO BE DEMOLISHED & REMOVED (TYPICAL 3X)

SAWCUT & REMOVE EXISTING CONCRETE IN THIS AREA, INCLUDING EXISTING SIDEWALKS IN AREAS INDICATED.

GRAVEL TO BE REMOVED IN THIS AREA

EXIST. LIGHT POLES & FIXTURES TO BE REMOVED & SALVAGED, POLE BASES TO BE DEMOLISHED & REMOVED (TYPICAL 3X)

EXIST. LIGHT POLES & FIXTURES TO BE REMOVED & SALVAGED, POLE BASES TO BE DEMOLISHED & REMOVED (TYPICAL 2X)

- LEGEND:**
-  DESIGNATED REMOVAL AREAS
  -  GRAVEL AREA TO BE REMOVED
  -  SAWCUT DESIGNATION LINE

**NOTE:**  
 EXISTING CONCRETE TO BE SAWCUT, REMOVED AND DISPOSED OF OFFSITE BY THE CONTRACTOR.

**RECORD DRAWING**  
 This is to certify that changes and corrections have been made to conform to the contractor's record of this project.  
 Signed: *[Signature]* Date: 4/12/00  
 Graham Associates, Inc.  
 CONSULTING ENGINEERS & PLANNERS

*[Signature]*  
 1/14/99

**2.13**  
 SCALE: 1"=50'

**DEMOLITION PLAN**  
**LOT 1, BLOCK A**  
**LAKE POINTE**  
**BAPTIST CHURCH**  
 CITY OF ROCKWALL  
 ROCKWALL COUNTY, TEXAS

**Graham Associates, Inc.**  
 CONSULTING ENGINEERS & PLANNERS  
 616 SIX FLAGS DRIVE, SUITE 400  
 ARLINGTON, TEXAS 76011 (817) 640-8535

Drawn By: G.A.I. Sheet 7 Of 27

Date: DEC., 1998  
 File: 9762-1011

