

**CONSTRUCTION PLANS
OF**

**PROPOSED WATER IMPROVEMENTS
BUFFALO CREEK WATER SYSTEM**

FOR

AQUA TEXAS , INC.

ROCKWALL COUNTY, TEXAS

NOVEMBER, 2005

APPROVED BY AQUA TEXAS, INC THIS THE
_____ DAY OF _____, 2005.

APPROVED: _____
GARY DOUGLAS - AREA COORDINATOR

VELVIN & WEEKS
CONSULTING ENGINEERS, INC.



GENERAL NOTES

1. THE CONTRACTOR IS SPECIFICALLY CAUTIONED THAT THE LOCATION AND/OR ELEVATION OF EXISTING UTILITIES AS SHOWN ON THESE PLANS IS BASED ON RECORDS OF THE VARIOUS UTILITY COMPANIES AND WHERE POSSIBLE, MEASUREMENTS TAKEN IN THE FIELD. THE INFORMATION IS NOT TO BE RELIED UPON AS BEING EXACT OR COMPLETE. THE CONTRACTOR MUST CALL THE APPROPRIATE UTILITY COMPANY AT LEAST 48 HOURS BEFORE ANY EXCAVATION TO REQUEST EXACT FIELD LOCATION OF UTILITIES WHICH CONFLICT WITH THE PROPOSED IMPROVEMENTS SHOWN ON THE PLANS. THE CONTRACTOR SHALL INSTALL THE PROPOSED WATER LINES A MINIMUM OF 18" UNDER ALL PIPELINE CROSSINGS, UNLESS DIRECTED OTHERWISE BY THE ENGINEER.

2. THERE IS THE POSSIBILITY OF ADDITIONAL EXISTING UTILITY LINES WITHIN THE CONSTRUCTION AREAS IN ADDITION TO THOSE SHOWN ON THE CONSTRUCTION PLANS. IT IS THE CONTRACTOR'S RESPONSIBILITY TO AVOID ALL EXISTING UTILITIES AND REPAIR ANY DAMAGE AT NO COST TO THE AQUA TEXAS, INC. WHETHER THE UTILITY IS SHOWN ON THE PLANS OR NOT.

UTILITY CONTACT PERSONS:

AQUA TEXAS, INC. - GARY DOUGLAS (AREA COORDINATOR) 803-574-1889
 SOUTHWESTERN BELL TELEPHONE - ENTERPRISE 5800
 ATMOS GAS - 214-741-1671 or 800-344-8377
 NORTH TEXAS MUNICIPAL WATER DISTRICT - RAYMOND LOWERY 972-442-5405
 US SPRINT - 1 (800) 521-0570 OR ENTERPRISE 9800
 AT&T FIBER OPTIC - 800-395-0440 MCI FIBER OPTIC - 800-344-8377 WORLD COMMUNICATIONS
 FIBER OPTIC - 800-248-0133

3. THE CONTRACTOR SHALL BE REQUIRED TO INSTALL ALL BARRICADES, SIGNS, AND WARNING DEVICES AS CALLED FOR IN THE TEXAS MANUAL ON UNIFORM TRAFFIC CONTROL DEVICES, AND TO COMPLY WITH ALL TEXAS HIGHWAY DEPARTMENTS REQUIREMENTS.

4. THE CONTRACTOR SHALL CLEAR AND DISPOSE OF EXISTING TREES, BRUSH, ETC., AS REQUIRED TO CONSTRUCT THE WATER LINES. ALL FENCES, GATES, OR OTHER IMPROVEMENTS WHICH ARE DISTURBED SHALL BE RECONSTRUCTED OR REPLACED TO ORIGINAL CONDITION OR BETTER. THIS SHALL BE DONE IN A MANNER SATISFACTORY TO THE ENGINEER AND LANDOWNER. THIS WORK SHALL NOT BE PAID FOR DIRECTLY, BUT SHALL BE CONSIDERED SUBSIDIARY TO THE VARIOUS BID ITEMS.

5. THE CONTRACTOR SHALL TIE EXISTING WATER DISTRIBUTION LINES INTO THE PROPOSED LINE WORK AND PLUG EXISTING LINES AS SHOWN ON THE PLANS. SOME TIE-INS OR PLUGGING OF EXISTING LINES MAY REQUIRE A PORTION OF THE SYSTEM TO BE ISOLATED AND DEWATERED. THE CONTRACTOR SHALL COORDINATE THESE TIE-INS WITH THE ENGINEER. TIE-INS SHALL BE CONDUCTED SO AS TO MINIMIZE THE DISTURBANCE TO AQUA TEXAS'S CUSTOMERS. NO EXTRA PAYMENT WILL BE ALLOWED FOR THIS WORK, BUT SHALL BE CONSIDERED SUBSIDIARY TO THE VARIOUS BID ITEMS. FITTINGS & GATE VALVES SHALL BE PAID FOR ACCORDING TO THE BID SCHEDULE. SMALL 2" OR 1 1/2" PVC PIPE & FITTINGS NECESSARY TO MAKE THE TIE-INS SHALL ALSO BE CONSIDERED SUBSIDIARY TO THE VARIOUS BID ITEMS. SOLID SLEEVES DEEMED BY THE ENGINEER NECESSARY FOR THE TIE-IN SHALL BE PAID FOR WITH THE FITTINGS & MEGA-LUG RETAINING GLAND BID ITEMS.

6. THE CONTRACTOR IS TO PAY CLOSE ATTENTION TO BEDDING, BACKFILL, AND BLOCKING OF FITTINGS. THE SPECIFICATIONS FOR THESE SHALL BE STRICTLY ENFORCED.

7. ALL DRAINAGE DITCHES DISTURBED DUE TO CONSTRUCTION SHALL BE REGARDED TO ORIGINAL CONDITION BY THE CONTRACTOR. THIS WORK SHALL NOT BE PAID FOR DIRECTLY, BUT SHALL BE CONSIDERED SUBSIDIARY TO THE VARIOUS BID ITEMS.

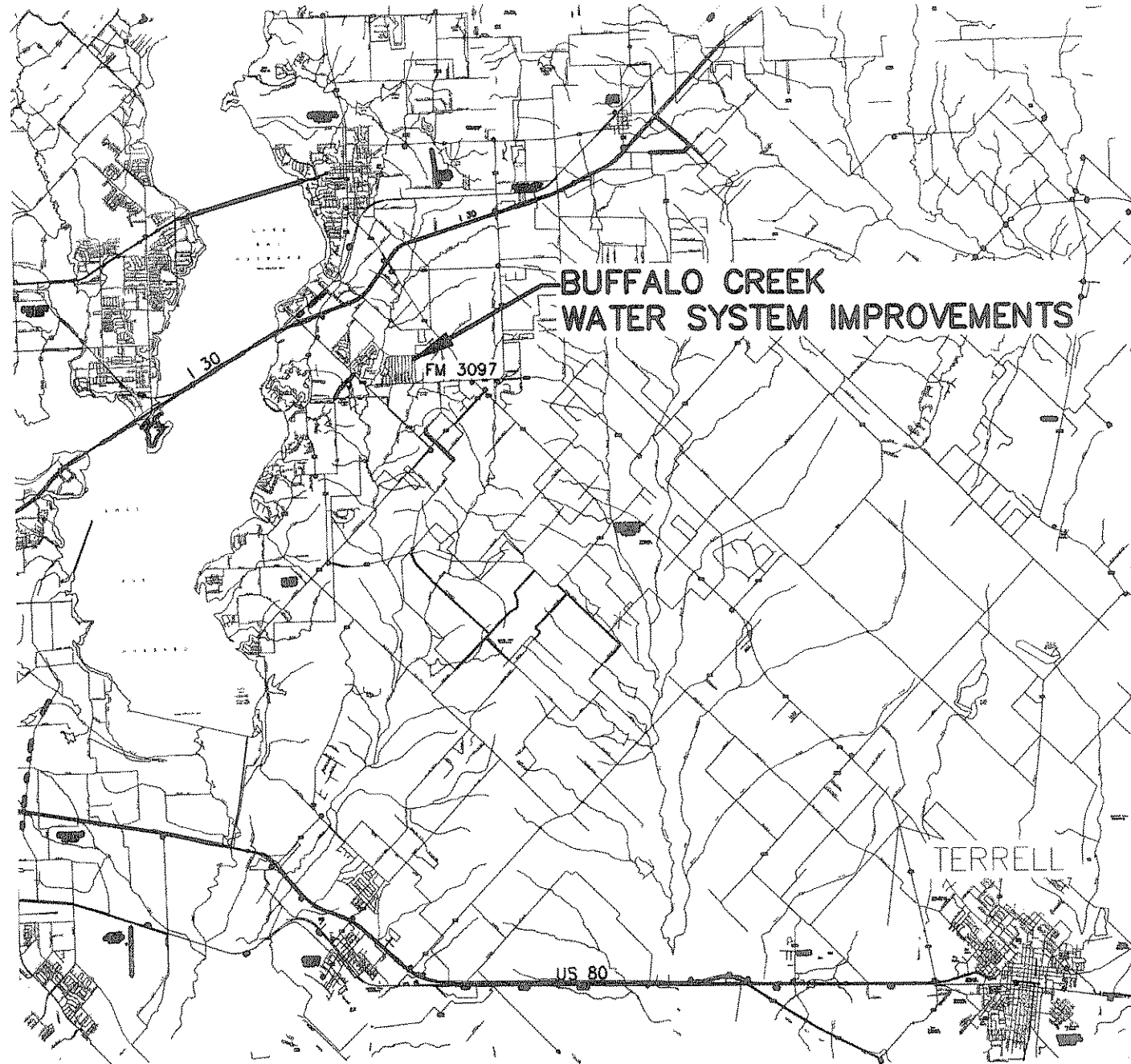
8. EXISTING WATER LINES SHALL BE ABANDONED AS SHOWN. LINES INDICATED TO BE ABANDONED SHALL REMAIN IN SERVICE DURING CONSTRUCTION AND UNTIL PROPOSED LINES HAVE BEEN APPROVED. P.V.C. PLUGS SHALL BE INSTALLED ON THE UNPRESSURIZED ABANDONED LINES TO PREVENT ENTRANCE OF GROUND WATER. SAID WORK AND PLUGS SHALL NOT BE PAID FOR DIRECTLY BUT SHALL BE CONSIDERED SUBSIDIARY TO OTHER ITEMS. PRESSURIZED PLUGS OR CAPS SHALL BE DUCTILE IRON & HAVE MEGA-LUG RETAINING GLANDS (IF APPLICABLE) & BE PAID FOR AS SHOWN ON THE BID SCHEDULE.

9. ALL FITTINGS & VALVES SHALL HAVE MEGA-LUG RETAINING GLANDS.

10. THIS DRAWING SHOWS WATER METERS AS INDICATED BY THE SURVEY. ALL WATER METERS AND/OR CONNECTIONS WERE NOT FOUND NOR SHOWN ON THESE PLANS. THE CONTRACTOR SHALL CONTACT ALL HOMEOWNERS AND RECONNECT ALL WATER SERVICES FROM EXISTING WATER LINE TO NEW 6" WATER LINE WHETHER SHOWN ON THESE PLANS OR NOT.

11. ALL NEW CONSTRUCTION IS TO BE PRESSURE TESTED, STERILIZED, AND TESTED FOR BACTERIA AND PASSED BEFORE SWITCHING OVER TO THE NEW LINE.

12. EACH INDIVIDUAL SERVICE IS NOT SHOWN ON PLAN SHEETS BECAUSE THE EXACT LOCATION IS TO BE DETERMINED, IN CONJUNCTION WITH THE OWNER, IN THE FIELD DURING CONSTRUCTION. HOWEVER THE DETAIL SHEET SHOWS A TYPICAL LAYOUT AND THE CORRESPONDING PAY ITEMS.



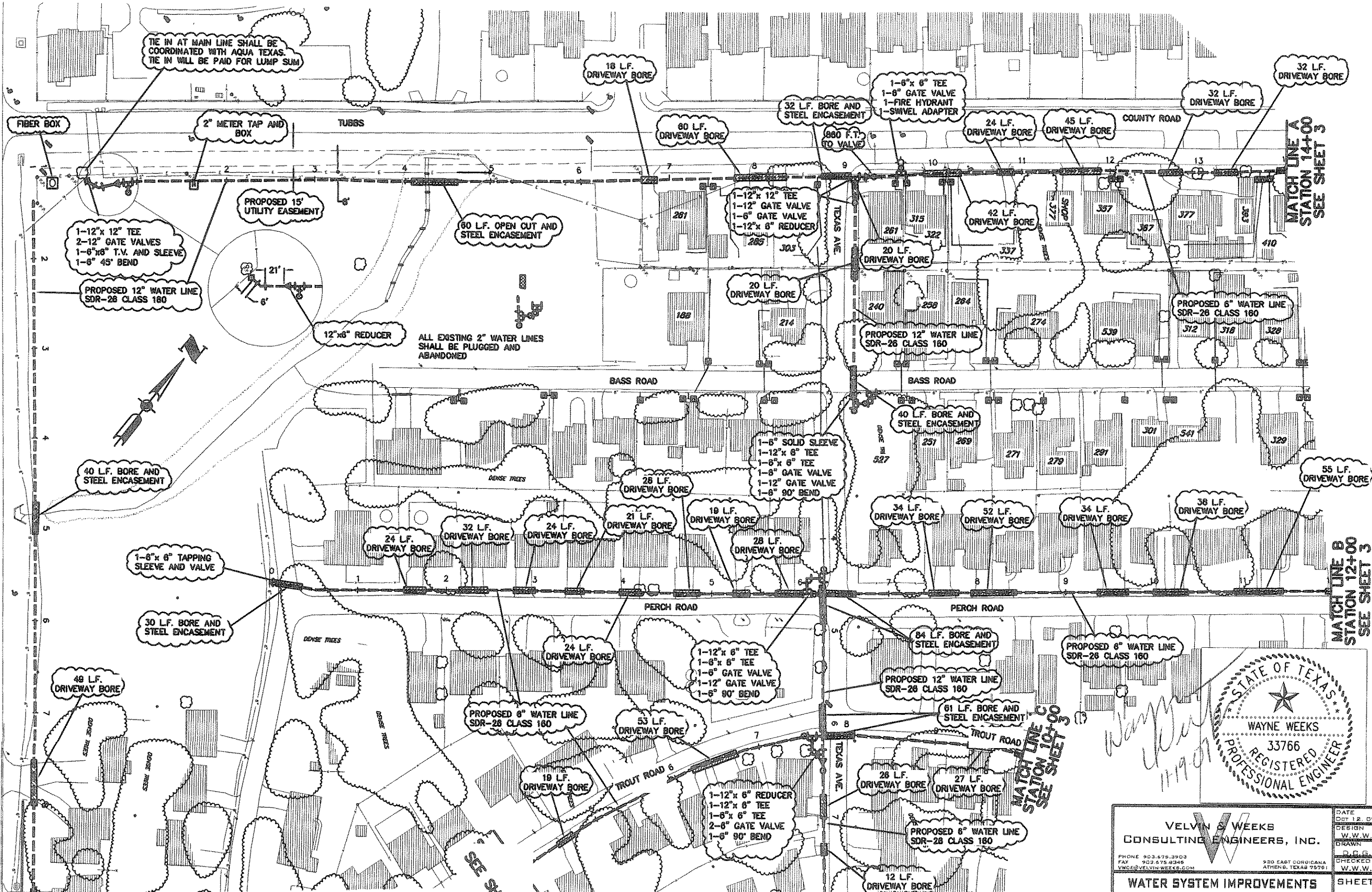
PLAN
N.T.S.

Wayne Weeks
11-19-07

VELVIN & WEEKS CONSULTING ENGINEERS, INC. PHONE 903.675.3903 FAX 903.675.8945 WWW.VEWELVINENGINEERS.COM 990 EAST CORNIGIANA ATHENS, TEXAS 75751		DATE	OCT 15, 07	
		DESIGN	W.W.W.	
WATER SYSTEM IMPROVEMENTS FOR AQUA TEXAS INC. BUFFALO CREEK WATER SYSTEM ROCKWALL COUNTY, TEXAS		CHECKED	W.W.W.	
		SHEET	1 of 9	
RECORD DRAWINGS	KDE	10-11-07	VICINITY MAP AND GENERAL NOTES	2638

B:\Record Drawings\AQUA TEXAS - BUFFALO CREEK WATER STUDY\Record Drawings\VICINITY MAP.dwg, 10/15/2007 3:16:26 PM

B:\Record Drawings\AQUA TEXAS - BUFFALO CREEK WATER STUDY\Record Drawings\Plot.dwg, 10/12/2007 3:23:20 PM



MATCH LINE E
STATION 9+00
SEE SHEET 5

PLAN
1" = 100'

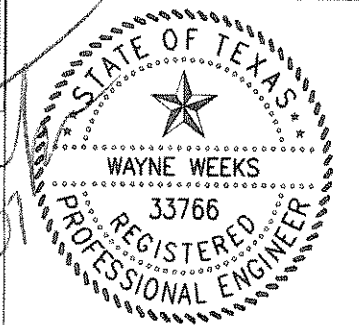
SEE SHEET 5

MATCH LINE D
STATION 8+00
SEE SHEET 5

MATCH LINE C
STATION 10+00
SEE SHEET 3

MATCH LINE A
STATION 14+00
SEE SHEET 3

MATCH LINE B
STATION 12+00
SEE SHEET 3



VELVIN S. WEEKS
CONSULTING ENGINEERS, INC.

PHONE 903.679.3903
FAX 903.679.0249
WWW@VELVIN-WEEKS.COM

900 EAST OREGONA
ATHENS, TEXAS 75761

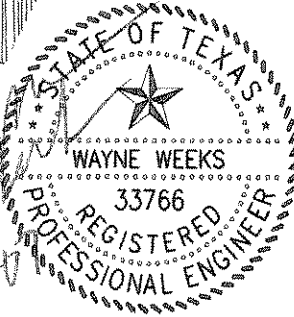
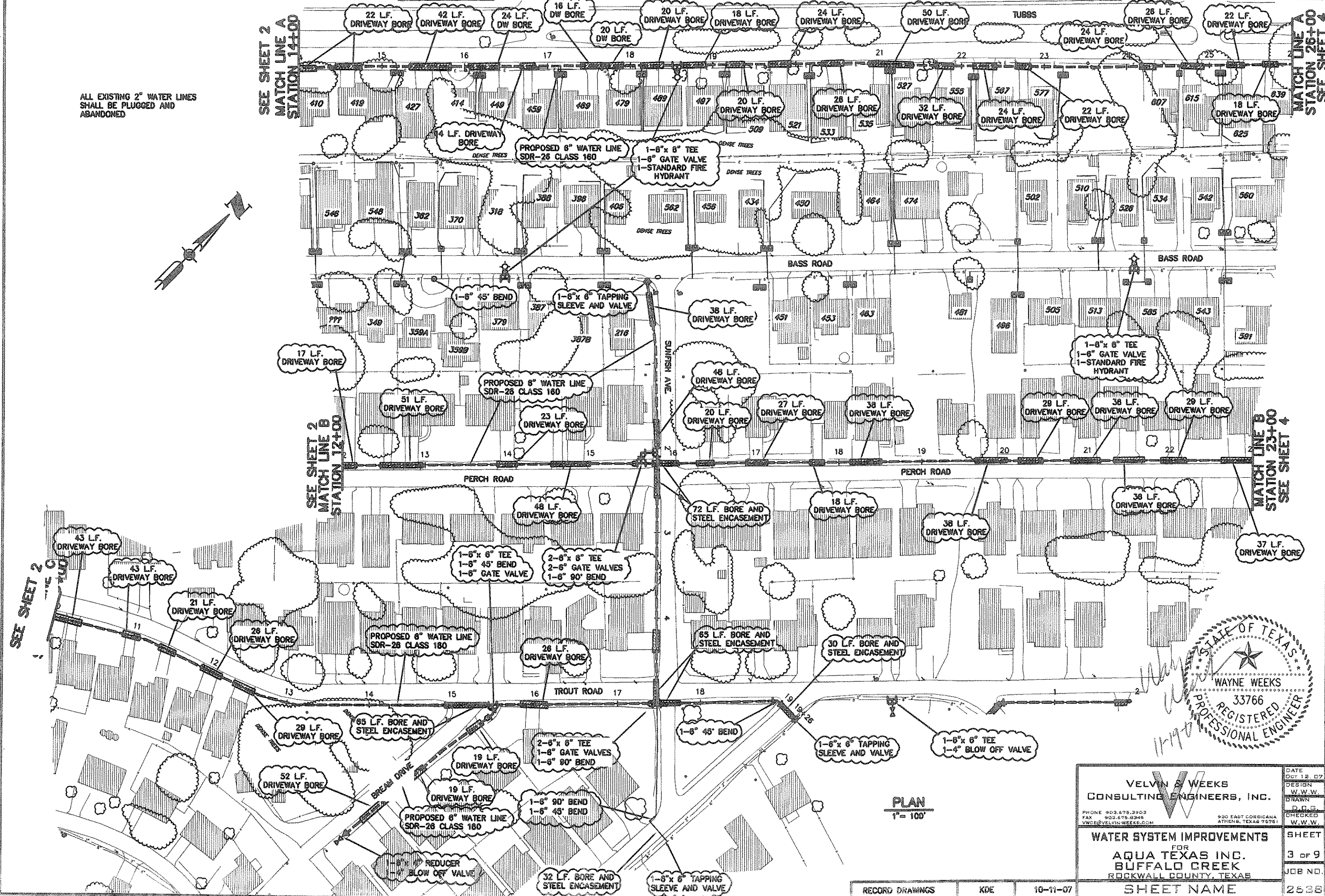
WATER SYSTEM IMPROVEMENTS
FOR
AQUA TEXAS INC.
BUFFALO CREEK
ROCKWALL COUNTY, TEXAS

DATE: OCT 12 07
DESIGN: W.W.W.
DRAWN: D.P.S.
CHECKED: W.W.W.

SHEET
2 of 9
JOB NO.
SHEET NAME

B:\Record Drawings\AQUA TEXAS - BUFFALO CREEK WATER STUDY\Record Drawings\Plot.dwg, 10/12/2007 3:29:18 PM

ALL EXISTING 2" WATER LINES SHALL BE PLUGGED AND ABANDONED



PLAN
1" = 100'

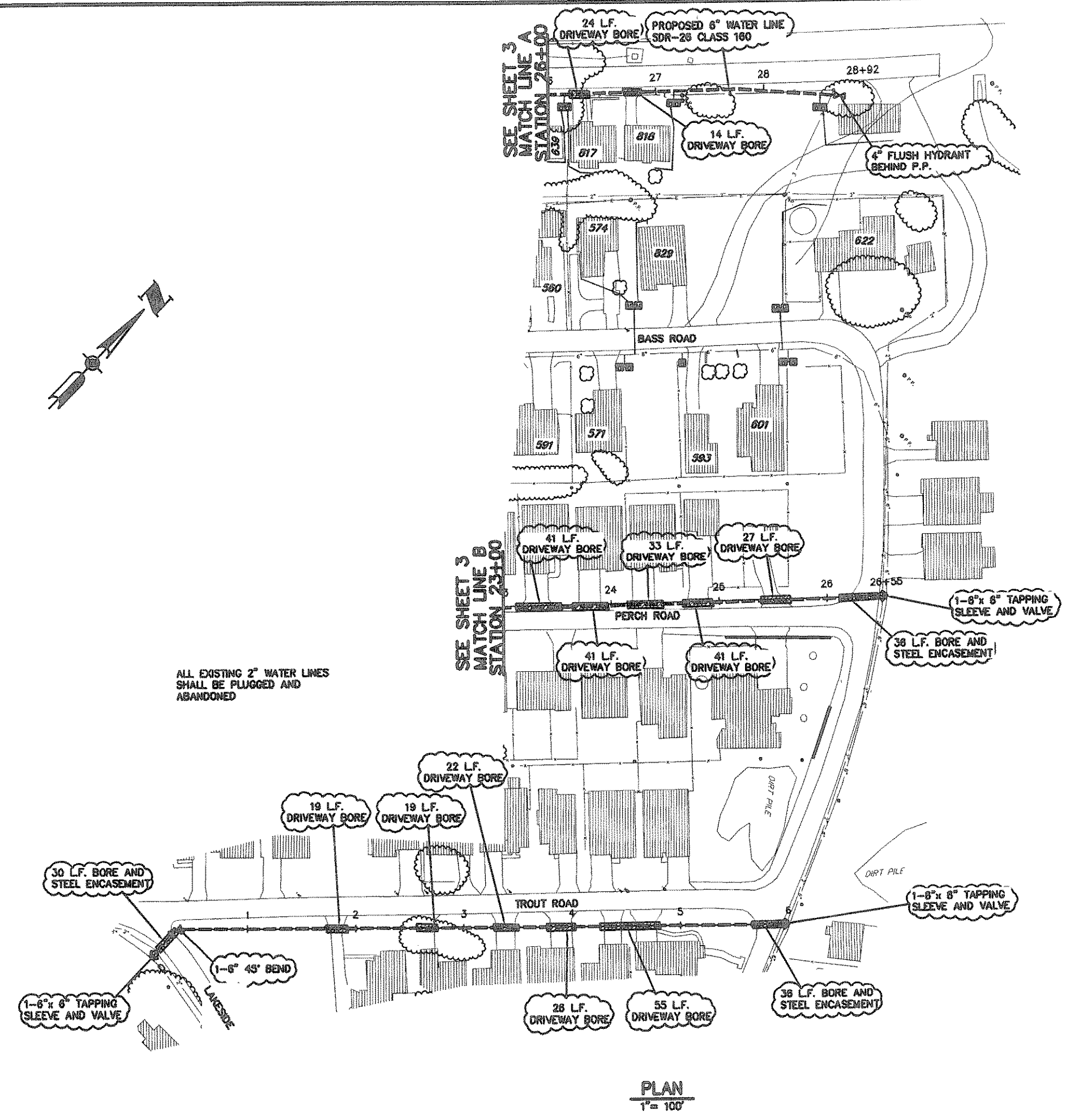
VELVIN & WEEKS
CONSULTING ENGINEERS, INC.

PHONE 903.675.3903
FAX 903.675.8345
VWO@VELVIN-WEEKS.COM

990 EAST CORRIGANA
ATHENS, TEXAS 75751

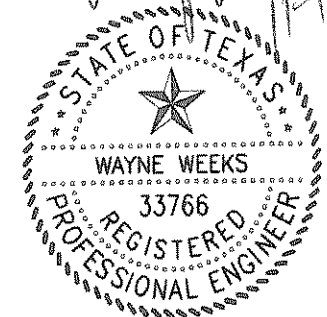
WATER SYSTEM IMPROVEMENTS
FOR
AQUA TEXAS INC.
BUFFALO CREEK
ROCKWALL COUNTY, TEXAS

DATE	OCT 12, 07
DESIGN	W.W.W.
DRAWN	D.P.B.
CHECKED	W.W.W.
SHEET	3 OF 9
JOB NO.	2638



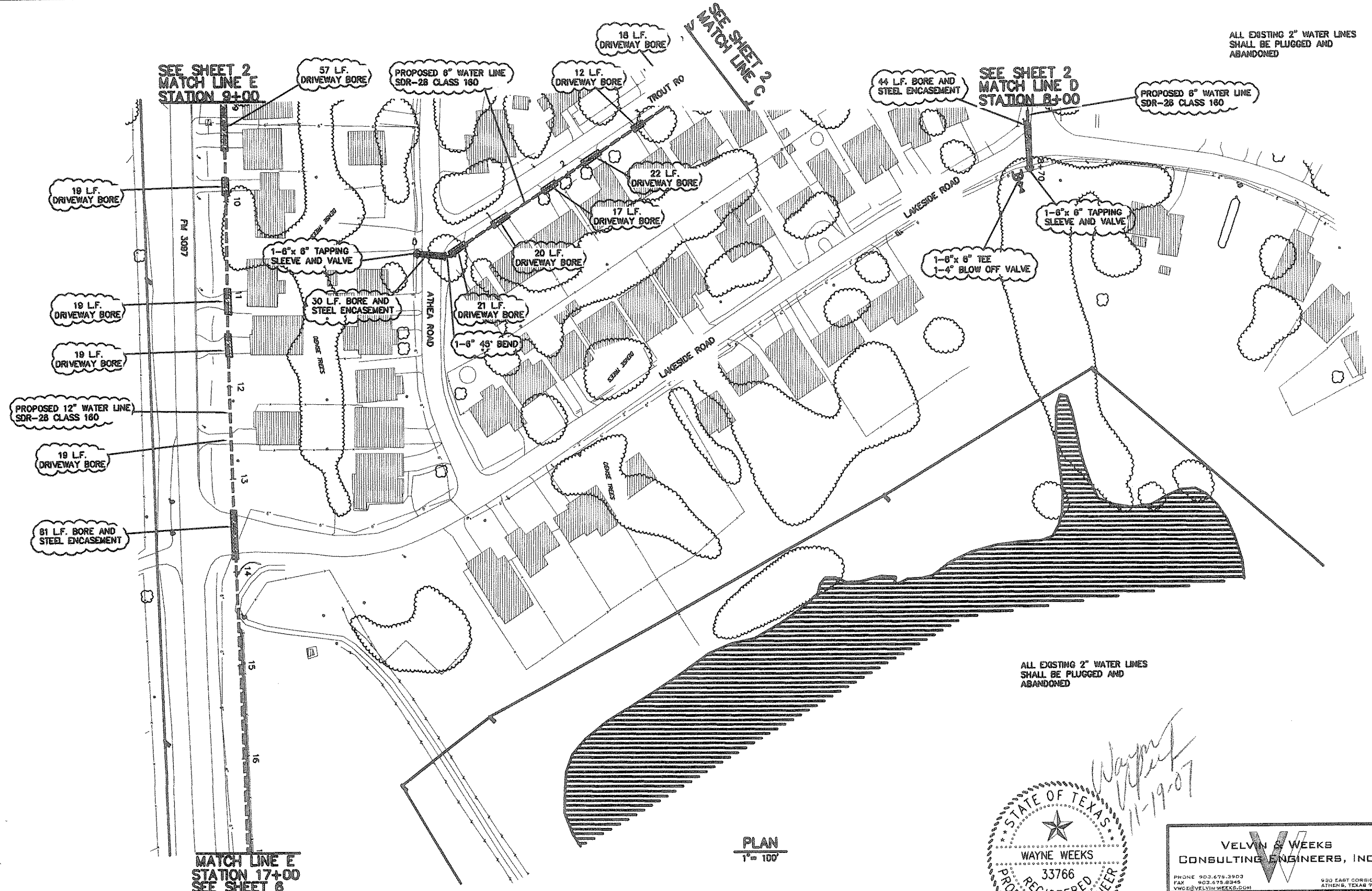
PLAN
 1" = 100'

Wayne Weeks
 11-19-07



VELVIN & WEEKS CONSULTING ENGINEERS, INC. PHONE 903.675.3903 FAX 903.679.4349 VWCE@VELVIN-WEEKS.COM		DATE	10/12/07
		DESIGN	W.W.W.
920 EAST CORNICANA ATHENS, TEXAS 75751		DRAWN	D.W.B.
		CHECKED	W.W.W.
WATER SYSTEM IMPROVEMENTS FOR AQUA TEXAS INC. BUFFALO CREEK ROCKWALL COUNTY, TEXAS		SHEET	4 OF 9
SHEET NAME		JOB NO.	2638

B:\Record Drawings\AQUA TEXAS - BUFFALO CREEK WATER STUDY\Record Drawings\Plot.dwg, 10/12/2007 3:38:10 PM



ALL EXISTING 2" WATER LINES SHALL BE PLUGGED AND ABANDONED

ALL EXISTING 2" WATER LINES SHALL BE PLUGGED AND ABANDONED

SEE SHEET 2
MATCH LINE E
STATION 9+00

SEE SHEET 2
MATCH LINE C

SEE SHEET 2
MATCH LINE D
STATION 8+00

MATCH LINE E
STATION 17+00
SEE SHEET 6

PLAN
1" = 100'

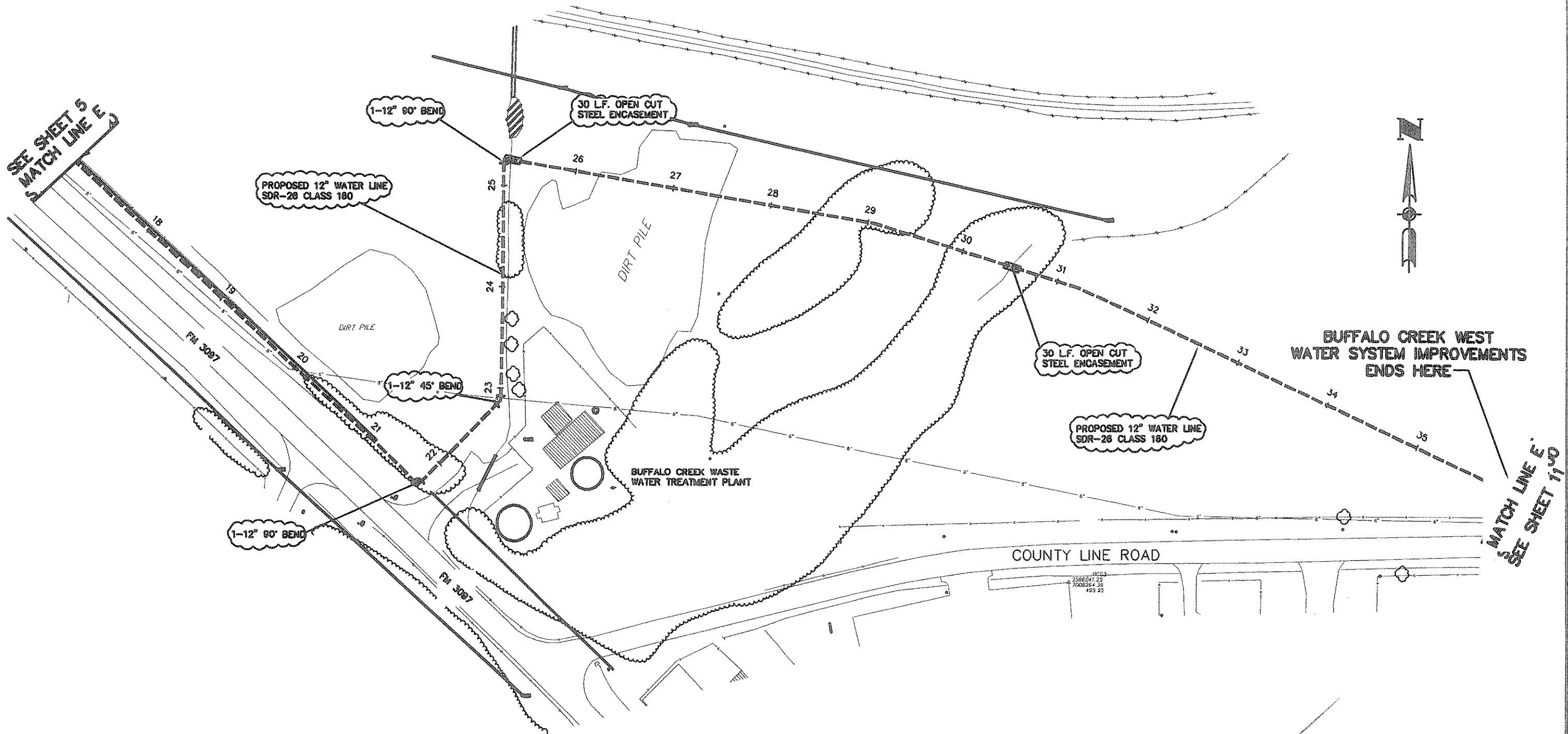


VELVIN & WEEKS CONSULTING ENGINEERS, INC.		DATE OCT 18, 07
PHONE 903.675.2903 FAX 903.675.8345 WWW@VELVIN-WEEKS.COM		DESIGN W.W.W.
900 EAST CORBICANA, ATHENS, TEXAS 75751		DRAWN D.C.B.
		CHECKED W.W.W.

WATER SYSTEM IMPROVEMENTS FOR AQUA TEXAS INC. BUFFALO CREEK ROCKWALL COUNTY, TEXAS		SHEET 5 OF 9
JOB NO.		2638

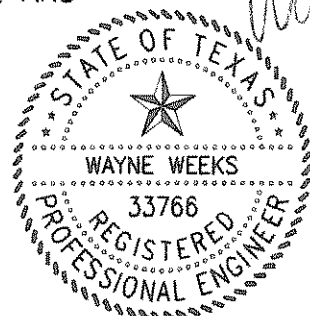
RECORD DRAWINGS	KDE	10-11-07	SHEET NAME
-----------------	-----	----------	------------

B:\Record Drawings\AQUA TEXAS - BUFFALO CREEK WATER STUDY\Record Drawings\Plot.dwg, 10/11/2007 4:41:44 PM



AQUA TEXAS IS TO PROVIDE
EASEMENTS FROM ROCKWALL AND
KAUFMAN COUNTIES

PLAN
1" = 100'



Wayne Weeks
11-19-07

VELVIN S. WEEKS CONSULTING ENGINEERS, INC. <small>PHONE 903.675.3903 FAX 903.675.0348 VWGE@VELVIN-WEEKS.COM 930 EAST CORRIGANA ATHENS, TEXAS 78751</small>		DATE	11.07
		DESIGN	W.W.W.
WATER SYSTEM IMPROVEMENTS FOR AQUA TEXAS INC. BUFFALO CREEK ROCKWALL COUNTY, TEXAS		DRAWN	W.W.W.
		CHECKED	W.W.W.
SHEET NAME		SHEET	6 of 9
RECORD DRAWINGS		JOB NO.	2638

RECORD DRAWINGS KDE 10-11-07

B:\Record Drawings\AQUA TEXAS - BUFFALO CREEK WATER STUDY\Record Drawings\PLOT.dwg, 10/12/2007 3:50:40 PM

ESTIMATED TOTALS (SHEET 2 OF X)

BID ITEM	UNIT	QUANTITY
6" SDR-28 CLASS 180 WATER LINE	L.F.	3480
12" SDR-28 CLASS 180 WATER LINE	L.F.	2551
BORE & STEEL ENCASUREMENT FOR 6" WATER LINE	L.F.	137
BORE & STEEL ENCASUREMENT FOR 12" WATER LINE	L.F.	178
DRIVEWAY BORES FOR 6" WATER LINE	L.F.	830
DRIVEWAY BORES FOR 12" WATER LINE	L.F.	71
6"x 6" TAPPING VALVE & SLEEVE	EA.	1
6" GATE VALVES	EA.	5
12" GATE VALVES	EA.	5
6" MEGA-LUG RESTRAINING JOINTS	EA.	31
12" MEGA-LUG RESTRAINING JOINTS	EA.	27
~FITTINGS~		
1-6" SOLID SLEEVE @ 39# EA.	LBS.	39
3-6"-90° BEND @ 48# EA.	LBS.	144
3-6"x 6" TEE @ 60# EA.	LBS.	180
2-12" 90° @ 141# EA.	LBS.	282
2-12"x 12" TEE @ 178# EA.	LBS.	358
3-12"x 6" TEE @ 115# EA.	LBS.	345
3-12"x 6" REDUCER @ 87# EA.	LBS.	87
FITTINGS TOTAL WEIGHT	LBS.	1413

ESTIMATED TOTALS (SHEET 3 OF X)

BID ITEM	UNIT	QUANTITY
6" SDR-28 CLASS 180 WATER LINE	L.F.	3942
12" SDR-28 CLASS 180 WATER LINE	L.F.	0
BORE & STEEL ENCASUREMENT FOR 6" WATER LINE	L.F.	232
BORE & STEEL ENCASUREMENT FOR 12" WATER LINE	L.F.	0
DRIVEWAY BORES FOR 6" WATER LINE	L.F.	1204
DRIVEWAY BORES FOR 12" WATER LINE	L.F.	0
6"x 6" TAPPING VALVE & SLEEVE	EA.	2
6" GATE VALVES	EA.	3
12" GATE VALVES	EA.	0
6" MEGA-LUG RESTRAINING JOINTS	EA.	31
12" MEGA-LUG RESTRAINING JOINTS	EA.	0
~FITTINGS~		
2-6"-90° BEND @ 48# EA.	LBS.	96
1-6"-45° BEND @ 38# EA.	LBS.	38
6-6"x 6" TEE @ 60# EA.	LBS.	360
1-6"-45° BEND @ 38# EA.	LBS.	38
FITTINGS TOTAL WEIGHT	LBS.	659

ESTIMATED TOTALS (SHEET 4 OF X)

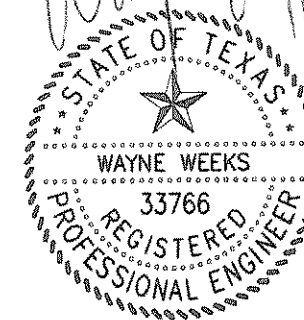
BID ITEM	UNIT	QUANTITY
6" SDR-28 CLASS 180 WATER LINE	L.F.	1247
BORE & STEEL ENCASUREMENT FOR 6" WATER LINE	L.F.	102
DRIVEWAY BORES FOR 6" WATER LINE	L.F.	371
6"x 6" TAPPING VALVE & SLEEVE	EA.	3
6" MEGA-LUG RESTRAINING JOINTS	EA.	5
~FITTINGS~		
1-6"-45° BEND @ 38# EA.	LBS.	38
FITTINGS TOTAL WEIGHT	LBS.	38

ESTIMATED TOTALS (SHEET 5 OF X)

BID ITEM	UNIT	QUANTITY
6" SDR-28 CLASS 180 WATER LINE	L.F.	470
12" SDR-28 CLASS 180 WATER LINE	L.F.	800
BORE & STEEL ENCASUREMENT FOR 6" WATER LINE	L.F.	74
BORE & STEEL ENCASUREMENT FOR 12" WATER LINE	L.F.	81
DRIVEWAY BORES FOR 6" WATER LINE	L.F.	110
DRIVEWAY BORES FOR 12" WATER LINE	L.F.	133
6"x 6" TAPPING VALVE & SLEEVE	EA.	2
6" GATE VALVES	EA.	0
12" GATE VALVES	EA.	0
6" MEGA-LUG RESTRAINING JOINTS	EA.	4
12" MEGA-LUG RESTRAINING JOINTS	EA.	0
~FITTINGS~		
1-6"x 6" TEE @ 60# EA.	LBS.	60
1-6"-45° BEND @ 38# EA.	LBS.	38
FITTINGS TOTAL WEIGHT	LBS.	98

ESTIMATED TOTALS (SHEET 6 OF X)

BID ITEM	UNIT	QUANTITY
OPEN CUT STEEL ENCASUREMENT FOR 12" WATER LINE	L.F.	80
12" SDR-28 CLASS 180 WATER LINE	L.F.	1900
12" MEGA-LUG RESTRAINING JOINTS	EA.	6
~FITTINGS~		
2-6"-90° BEND @ 48# EA.	LBS.	96
1-6"-45° BEND @ 38# EA.	LBS.	38
FITTINGS TOTAL WEIGHT	LBS.	134

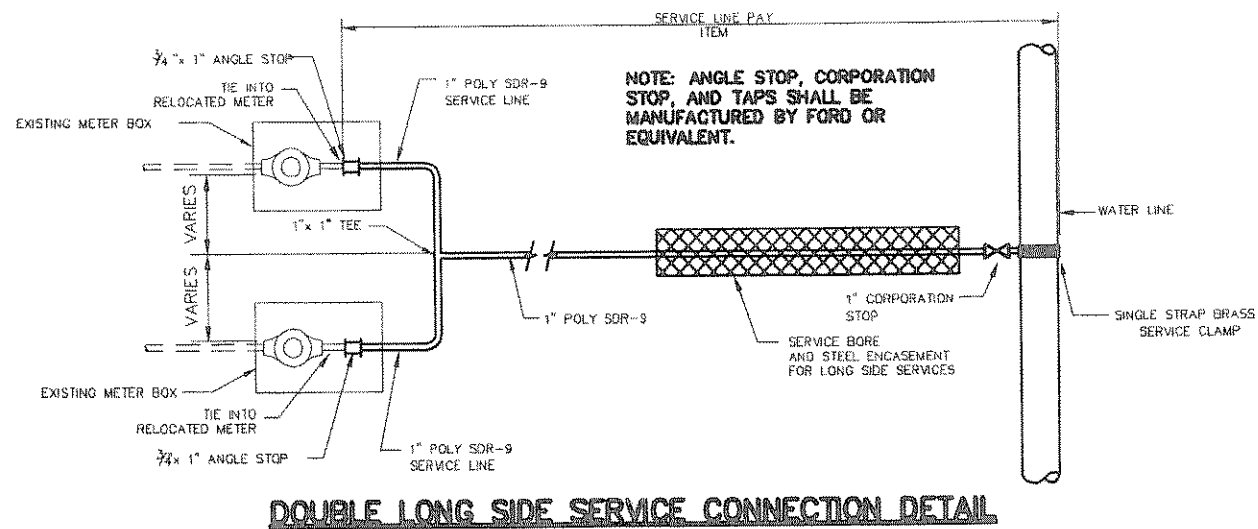


VELVIN & WEEKS
CONSULTING ENGINEERS, INC.
PHONE 936.675.3903
FAX 936.675.0245
VWCE@VELVIN-WEEKS.COM
930 EAST CORNICANA
ATHENS, TEXAS 75751

WATER SYSTEM IMPROVEMENTS
FOR
AQUA TEXAS INC.
BUFFALO CREEK
ROCKWALL COUNTY, TEXAS

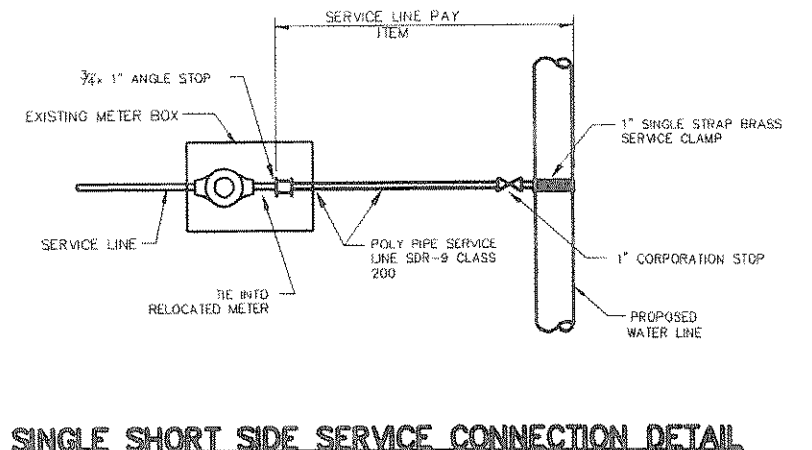
DATE
OCT 12, 07
DESIGN
W.W.W.
DRAWN
D.R.B.
CHECKED
W.W.W.

SHEET
7 of 9
JOB NO.
2638



DOUBLE LONG SIDE SERVICE CONNECTION DETAIL

N.T.S.



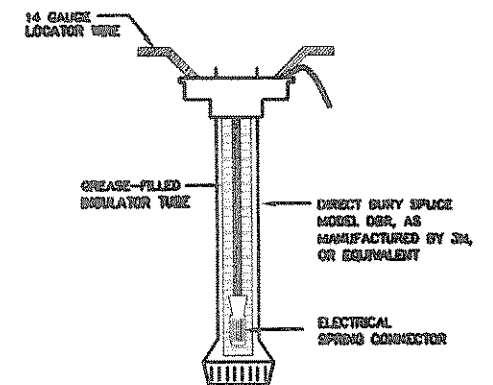
SINGLE SHORT SIDE SERVICE CONNECTION DETAIL

N.T.S.

NOTES

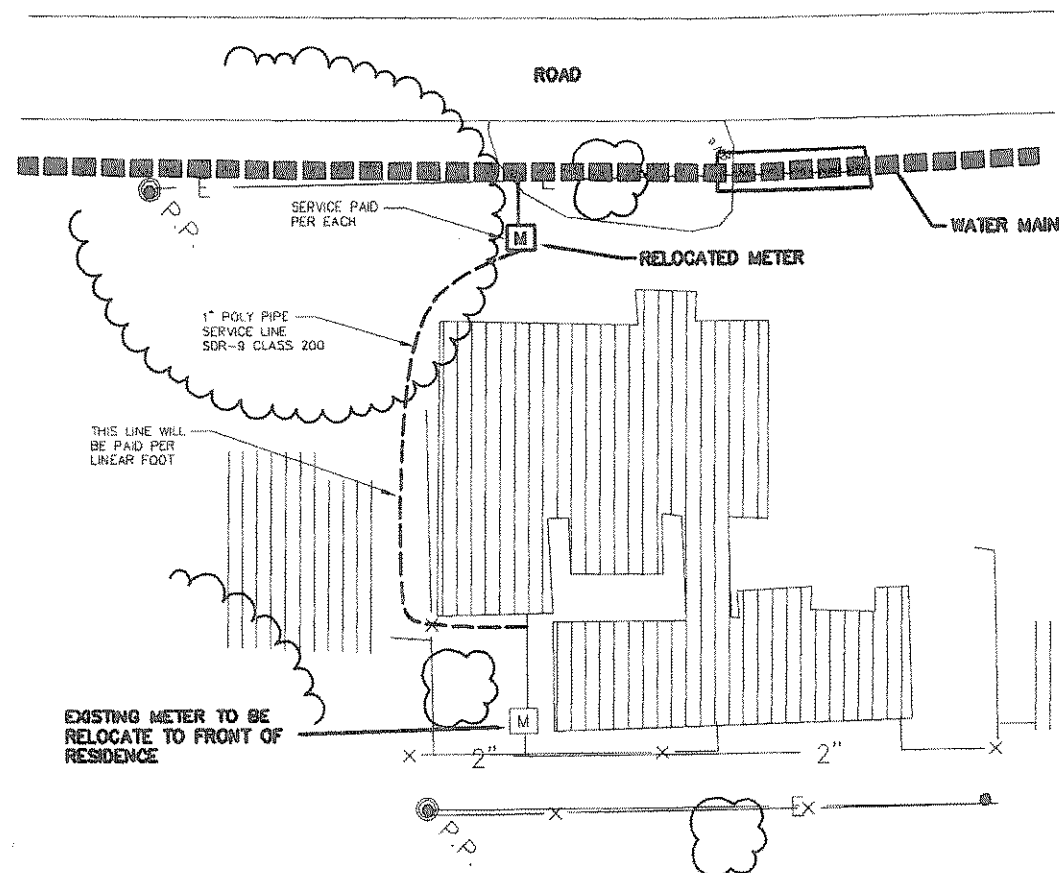
1. THE EXISTING WATER METERS ARE TO BE RELOCATED FROM THE REAR OF THE HOUSE TO THE FRONT OF THE HOUSE AND LOCATED IN THE FIELD BY THE ENGINEER AND CONTRACTOR IN CONJUNCTION WITH THE PROPERTY OWNER. THE SERVICE FROM THE NEW WATER LINE TO THE RELOCATED METER WILL BE PAID PER EACH, INCLUDING CONNECTION TO THE METER. THE RELOCATED METER IN FRONT OF THE HOUSE IS TO BE CONNECTED TO THE HOUSE PLUMBING AT THE NEAREST CONVENIENT LOCATION AS APPROVED BY THE HOME OWNER. THIS LINE WORK WILL BE PAID PER LINEAR FOOT AND WILL INCLUDE ALL LABOR, MATERIAL, EQUIPMENT AND OTHER ITEMS NECESSARY TO COMPLETE THE INSTALLATION. DAMAGE TO OTHER UTILITIES OR OTHER HOMEOWNERS PROPERTY WILL BE REPAIRED OR REPLACED AND WILL BE CONSIDERED SUBSIDIARY TO THE BID ITEM. SEPARATE SERVICE LINES WILL NOT BE LAID IN THE SAME DITCH.
2. ABANDONED SERVICE LINES SHALL BE PLUGGED. THE CORPORATION STOP OF RELOCATED SERVICES SHALL BE CLOSED OR A PLUG SHALL BE INSTALLED IF THERE IS NO CORPORATION STOP ON MAIN LINES THAT ARE TO REMAIN IN SERVICE.
3. CONTRACTOR SHALL PROVIDE WHATEVER FITTINGS NECESSARY TO CONNECT TO PRIVATE SERVICE LINE.
4. WORK ON SERVICES SHALL BE COORDINATED WITH THE PROPERTY OWNER, AND SHALL BE CONDUCTED IN SUCH A MANNER AS TO MINIMIZE THE INCONVENIENCE TO THE PROPERTY OWNER.

5. CONTRACTOR IS TO REPAIR ANY AND ALL UTILITY LINES OR OTHER OBJECTS DAMAGED IN THE INSTALLATION OF WATER SERVICE LINE ON CUSTOMERS SIDE OF THE METER. PAYMENT FOR THIS REPAIR WILL BE CONTAINED IN THE BID PRICE FOR METER RELOCATION.
6. ALL LONG SIDE SERVICES ARE TO BE BORE AND STEEL ENCASED FROM ROAD DITCH TO ROAD DITCH. THIS BORE AND ENCASEMENT WILL BE PAID WITH THE SERVICE LUMP SUM.



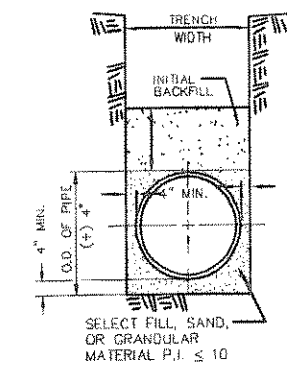
LOCATOR WIRE SPLICE

N.T.S.

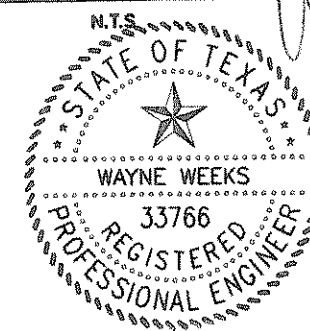


TYPICAL RELOCATION OF EXISTING METER DETAIL

N.T.S.



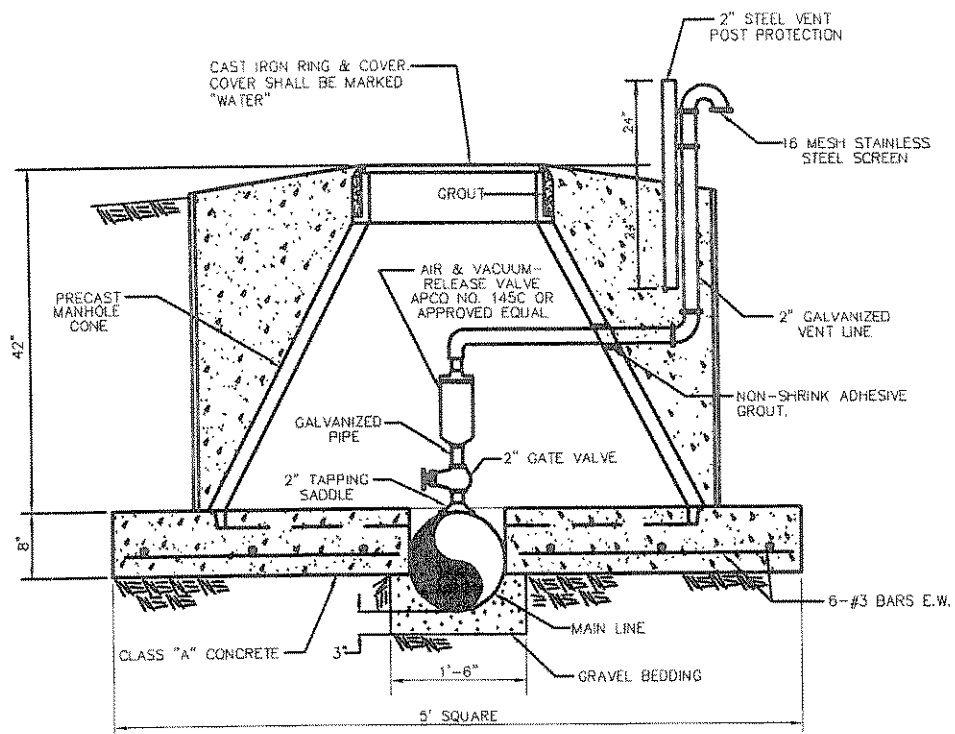
CLASS II SAND EMBEDMENT



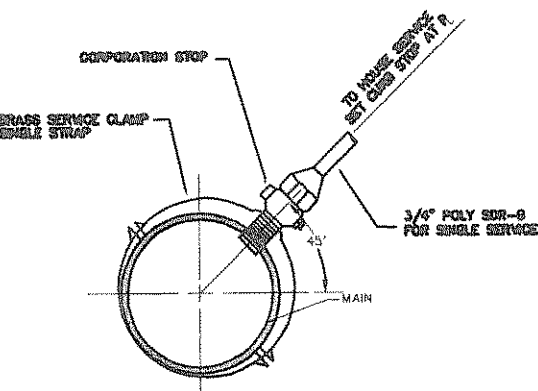
VELVIN & WEEKS CONSULTING ENGINEERS, INC.
 PHONE 903.679.3903 FAX 903.679.0345
 930 EAST CORNICANA ATHENS, TEXAS 76713
WATER SYSTEM IMPROVEMENTS FOR AQUA TEXAS INC. BUFFALO CREEK ROCKWALL COUNTY, TEXAS

DATE	OCT 12 07
DESIGN	W.W.W.
DRAWN	D.C.B.
CHECKED	W.W.W.
SHEET	8 of 9
JOB NO.	2638

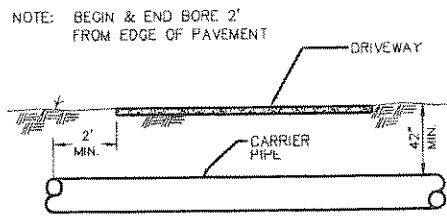
B:\Record Drawings\AQUA TEXAS - BUFFALO CREEK WATER STUDY\Record Drawings\Plot.dwg, 10/12/2007 3:45:03 PM



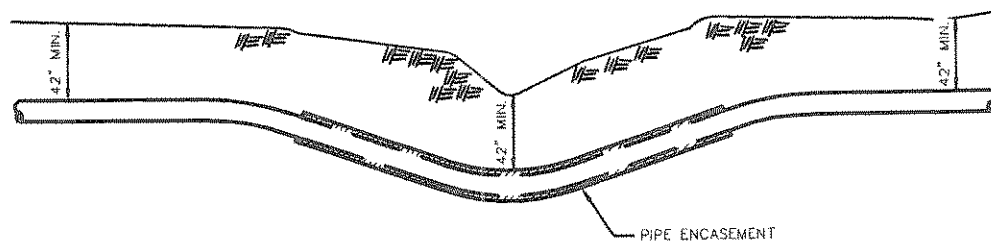
TYPICAL WATER AIR & VACUUM-RELEASE VALVE INSTALLATION
N.T.S.



D.I. & P.V.C. WATER CONNECTION
N.T.S.



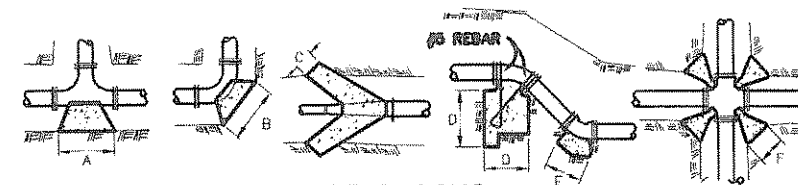
DRIVEWAY BORE DETAIL
N.T.S.



TYPICAL CREEK CROSSING
N.T.S.

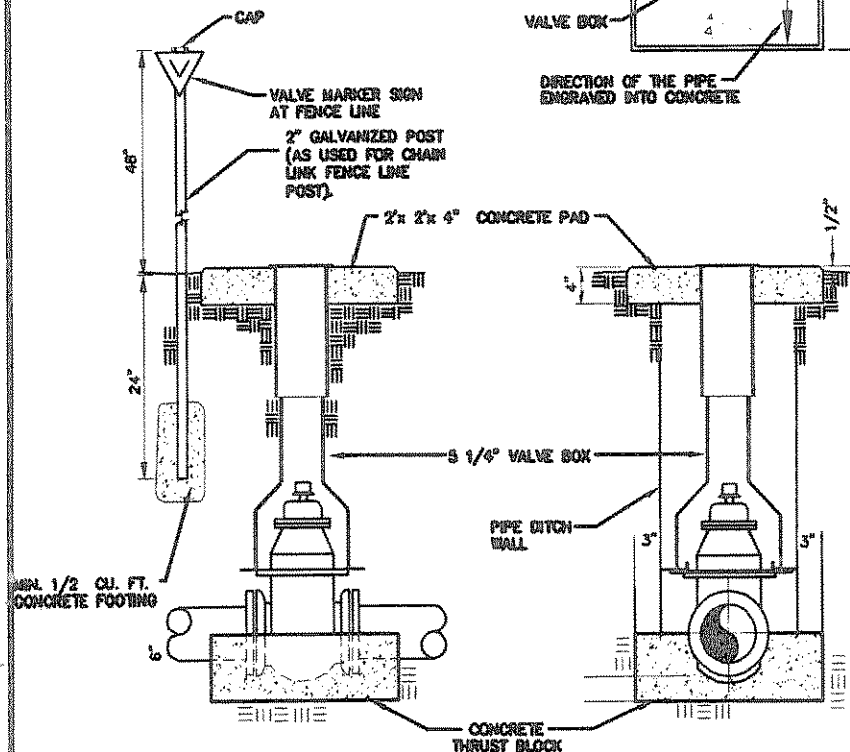
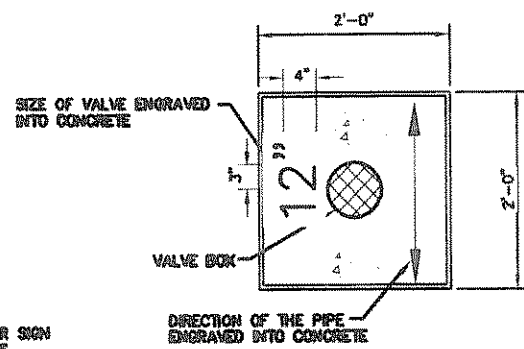
MINIMUM THRUST BLOCK DIMENSIONS (INCHES)

PIPE SIZE	A	B	C	D	E	F
8" AND SMALLER	26	34	20	34	26	26
8"	37	44	26	44	33	37
10"	46	54	33	54	40	46
12"	54	64	38	64	46	54
14"	63	75	44	75	53	63
16"	72	84	51	84	63	72
18"	78	96	59	96	72	78
20"	89	108	63	108	78	89

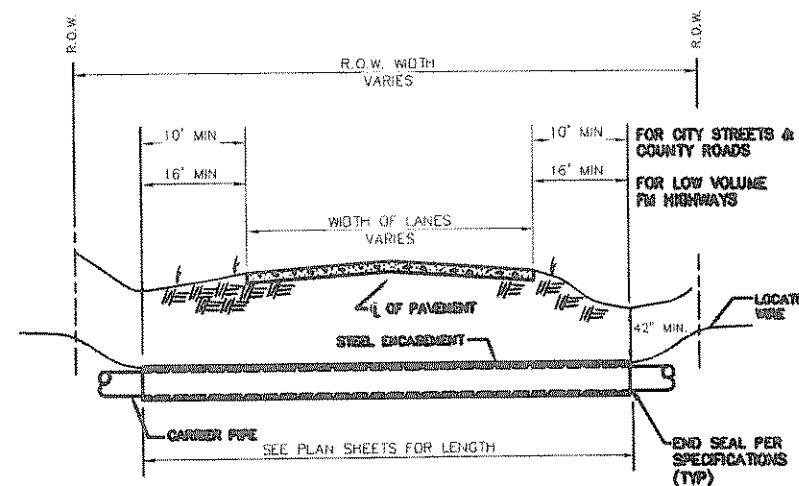


THRUST BLOCKS

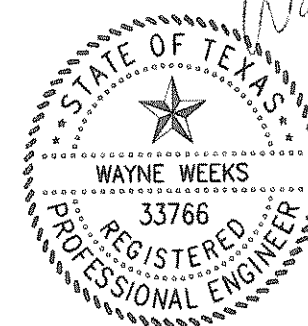
ALL CONCRETE TO BE CLASS "B" POURED AGAINST UNDISTURBED SOIL.
N.T.S.



BLOCKING DETAIL FOR VALVES
N.T.S.



TYPICAL BORE & ENCASEMENT DETAIL
N.T.S.



Wayne Weeks
11-19-07

VELVIN & WEEKS CONSULTING ENGINEERS, INC. PHONE 903.679.3903 FAX 903.679.0046 VWC@VELVINWEEKS.COM 930 EAST GORGICANA ATHENS, TEXAS 75761		DATE	OCT 12 07
		DESIGN	W.W.W.
WATER SYSTEM IMPROVEMENTS FOR AQUA TEXAS INC. BUFFALO CREEK ROCKWALL COUNTY, TEXAS		DRAWN	D.P.S.
		CHECKED	W.W.W.
SHEET		9 of 9	
JOB NO.		2638	