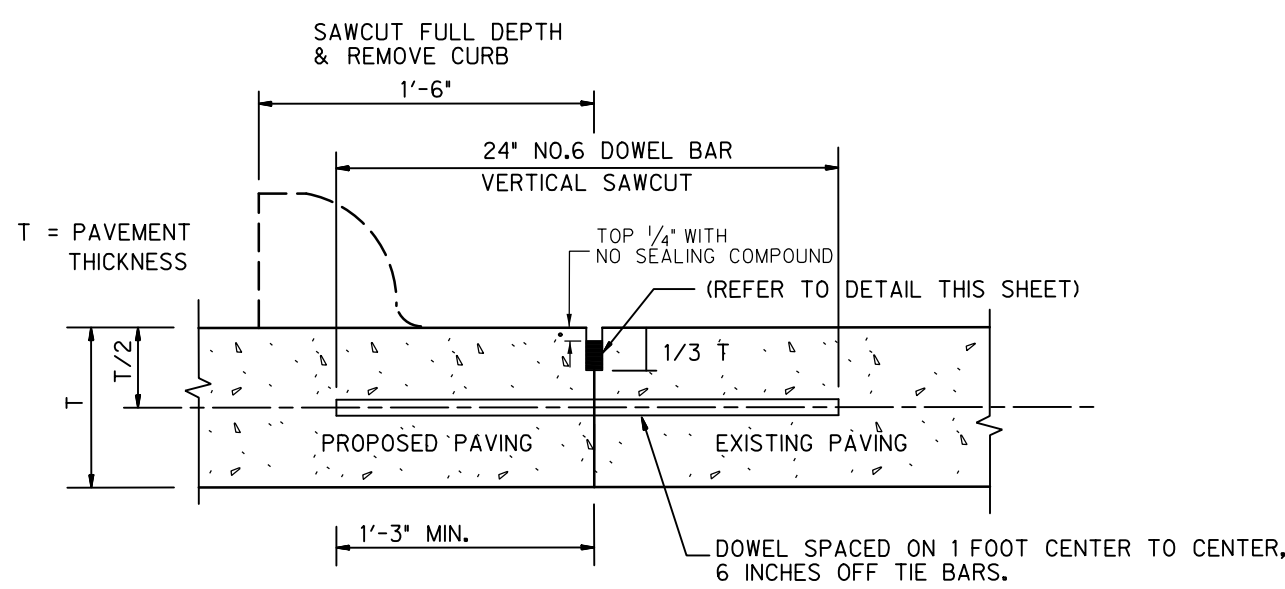


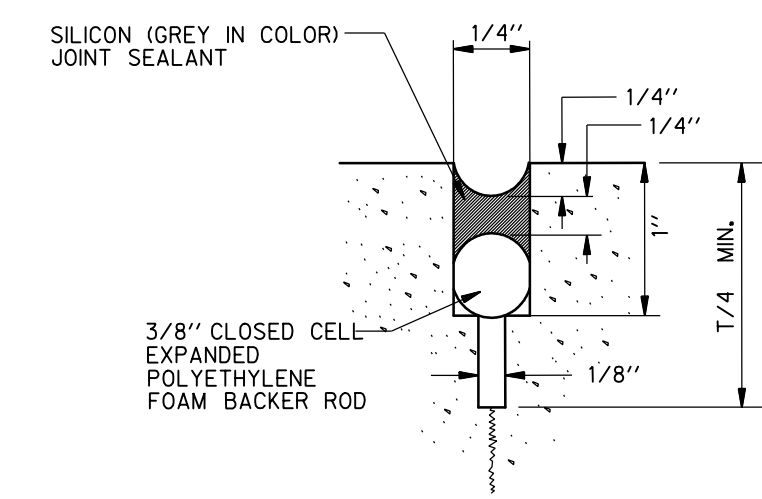
6/11/2018 2:44:56 PM ah1820 HALFF I:\310006\31697\CADD\Sheets\C402-PD-31697.dgn Design PDF_ZD_MON_FW_MR_300.plt

1 LONGITUDINAL BUTT JOINT
N.T.S.

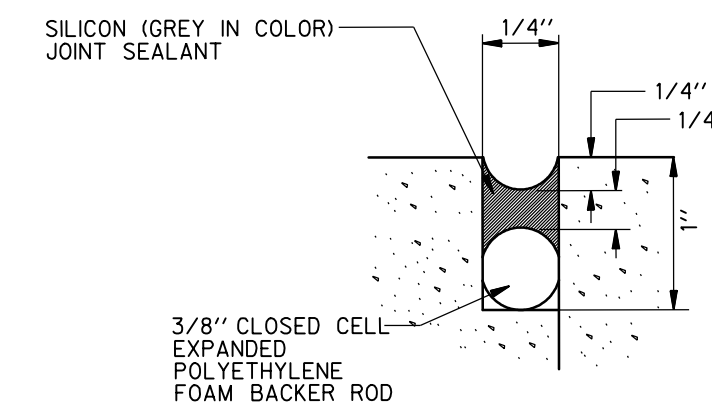


- DOWEL BARS SHALL BE DRILLED INTO PAVEMENT HORIZONTALLY BY USE OF A MECHANICAL RIG.
- DRILLING BY HAND IS NOT ACCEPTABLE, PUSHING DOWEL BARS INTO GREEN CONCRETE NOT ACCEPTABLE.
- DOWEL BARS SHALL BE EPOXIED IN PLACE WITHIN EXISTING PAVEMENT.

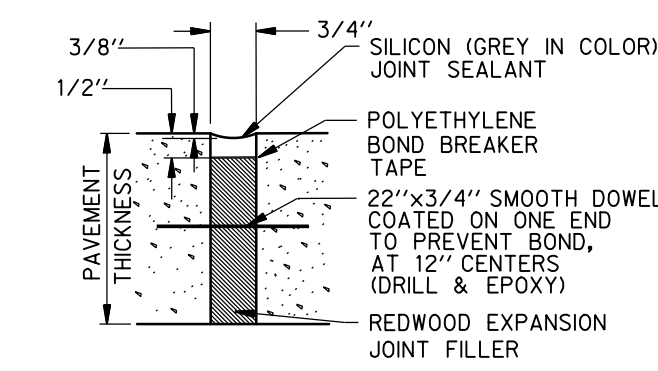
2 SAWN CONTROL JOINT (LONGITUDINAL & TRANSVERSE)
N.T.S.



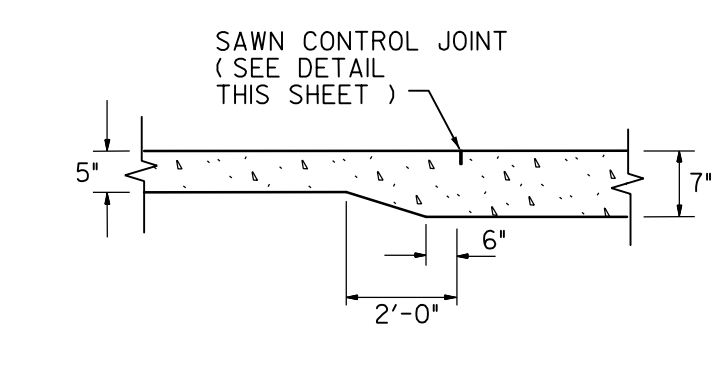
3 CONSTRUCTION JOINT
N.T.S.



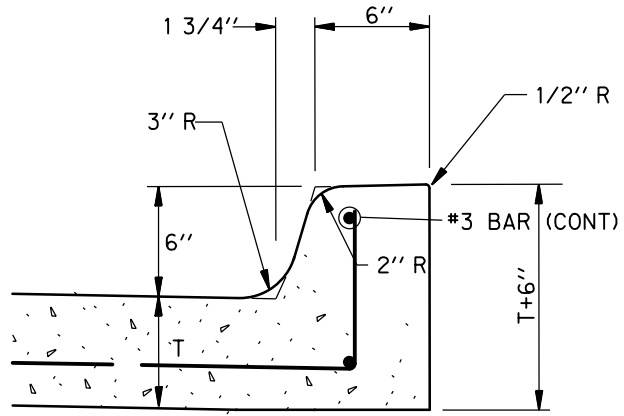
4 EXPANSION JOINT
N.T.S.



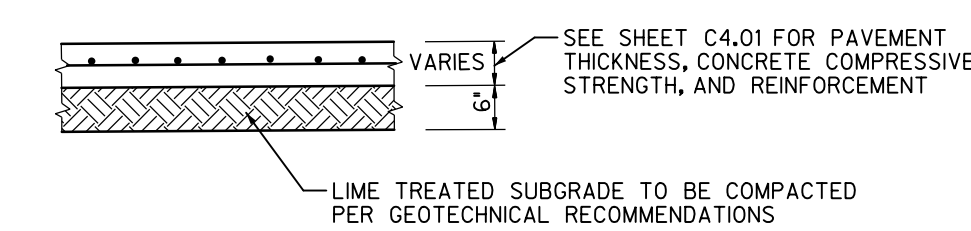
5 PAVEMENT TRANSITION
N.T.S.



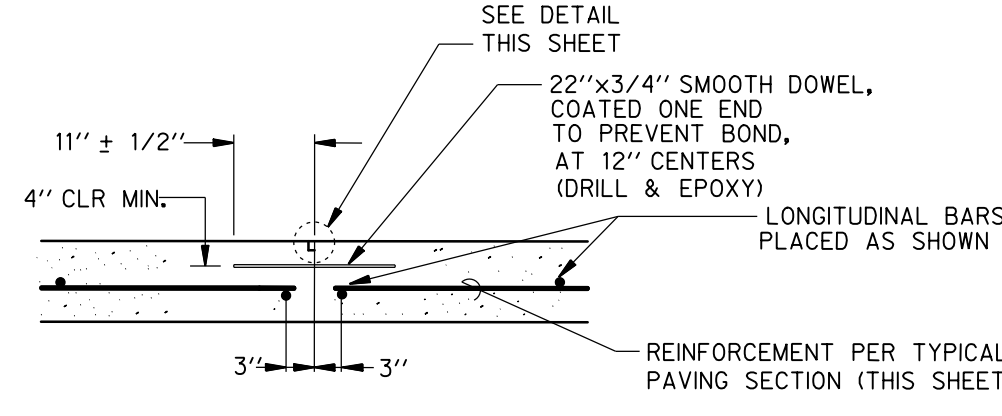
6 6" INTEGRAL CURB
N.T.S.



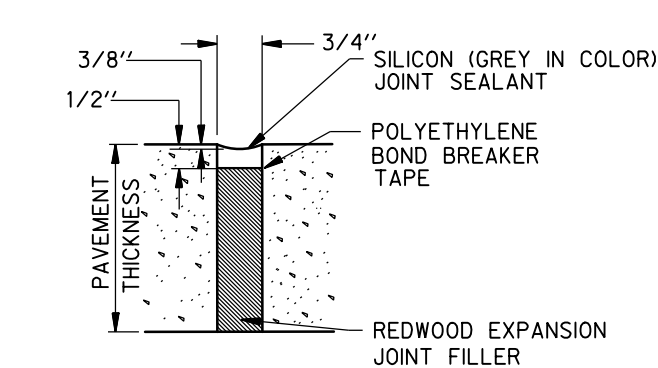
7 TYPICAL PAVEMENT SECTION
N.T.S.



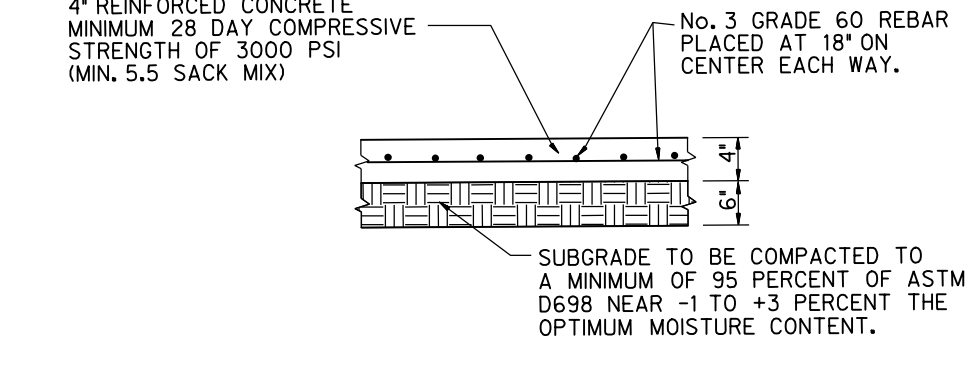
8 OPTIONAL CONSTRUCTION JOINT
N.T.S.



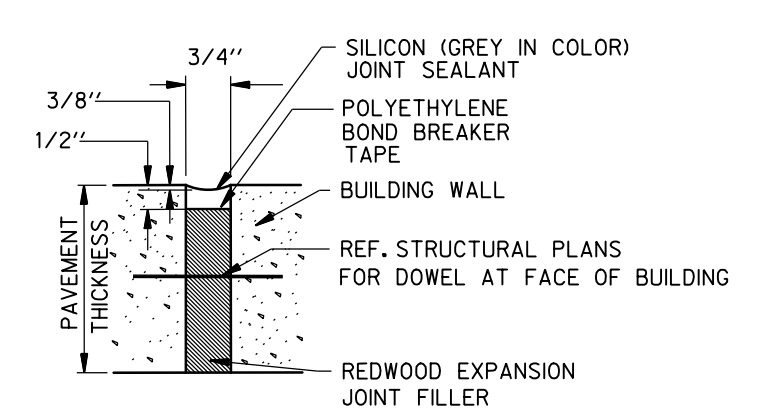
9 ISOLATION JOINT
N.T.S.



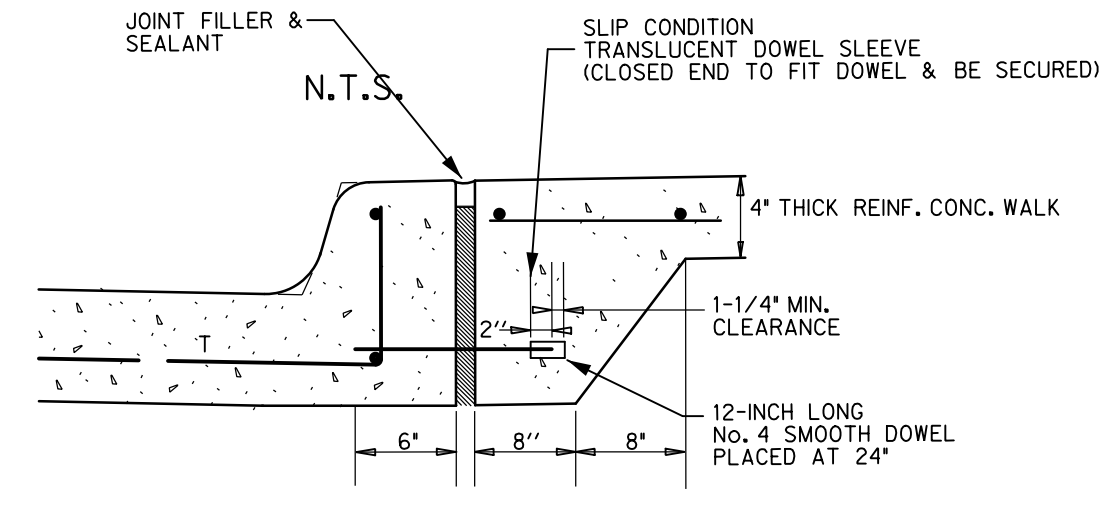
10 TYPICAL SIDEWALK SECTION
N.T.S.



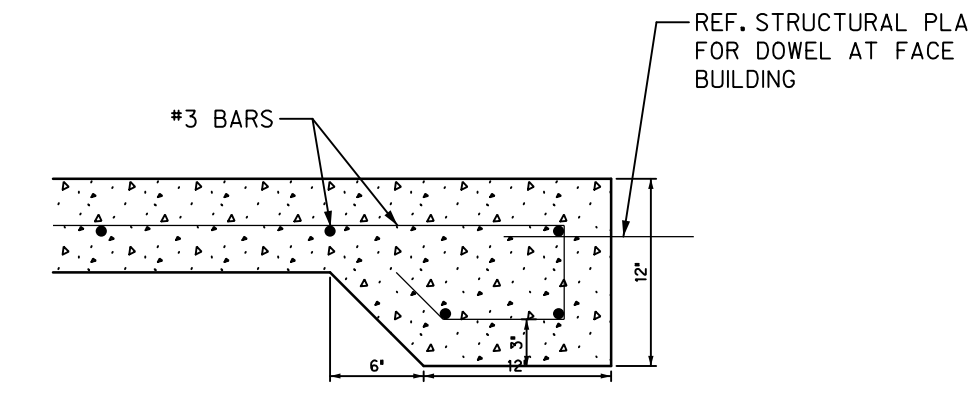
11 DOWELLED JOINT AT DOORWAYS
N.T.S.



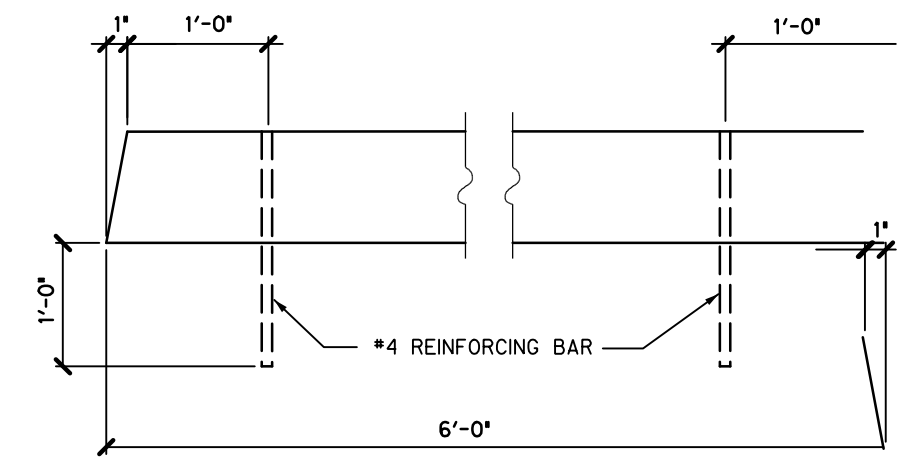
12 DETAIL FOR SIDEWALK ADJACENT TO CURB
N.T.S.



13 PAVEMENT EDGE AT FACE OF BUILDING
N.T.S.

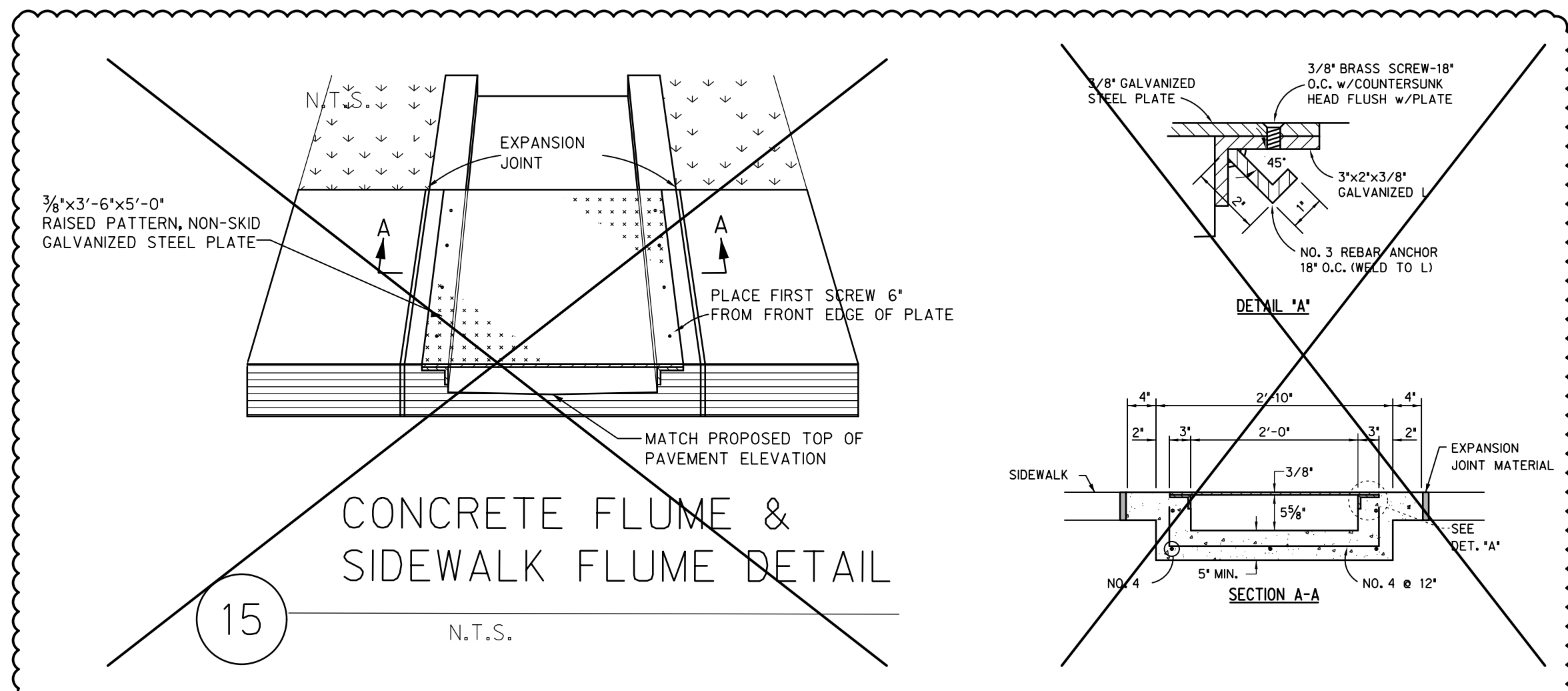


14 PRECAST CONC. WHEEL STOP
N.T.S.

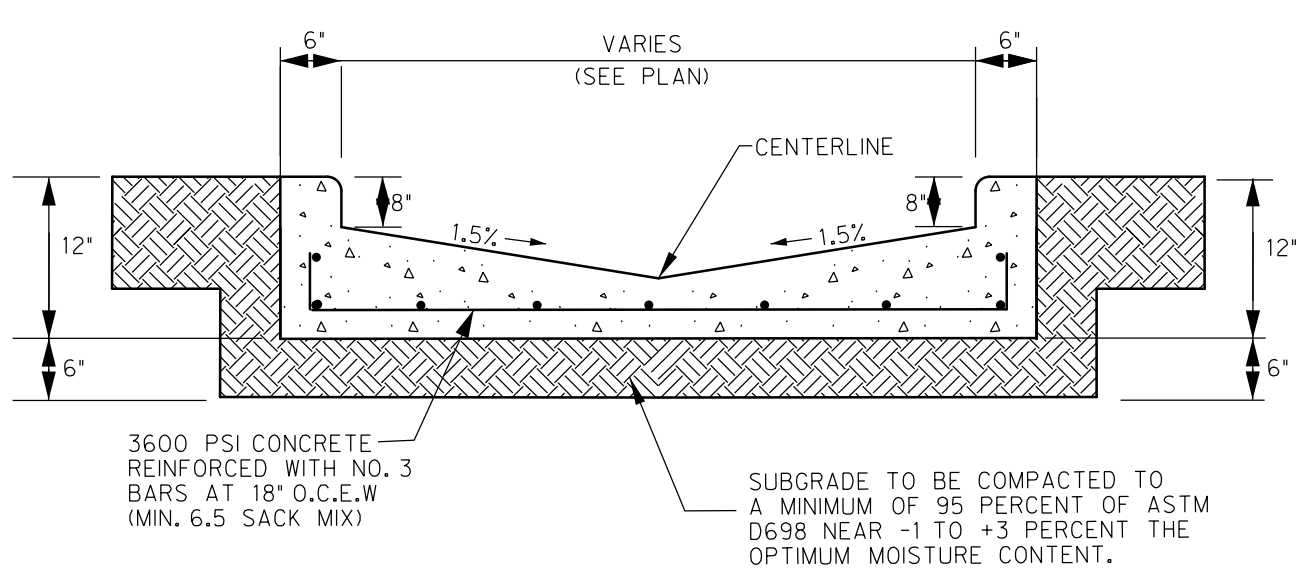


- NOTE:**
- PROVIDE ONE PRECAST WHEEL STOP PER HANDICAP PARKING SPACE AND PARKING ADJACENT TO BUILDING AS INDICATED ON SITE PLAN.
 - WHEEL STOP SHALL BE ATTACHED SECURELY TO THE CONCRETE PAVEMENT W/ EPOXY ADHESIVE AND DOWELS AS INDICATED.

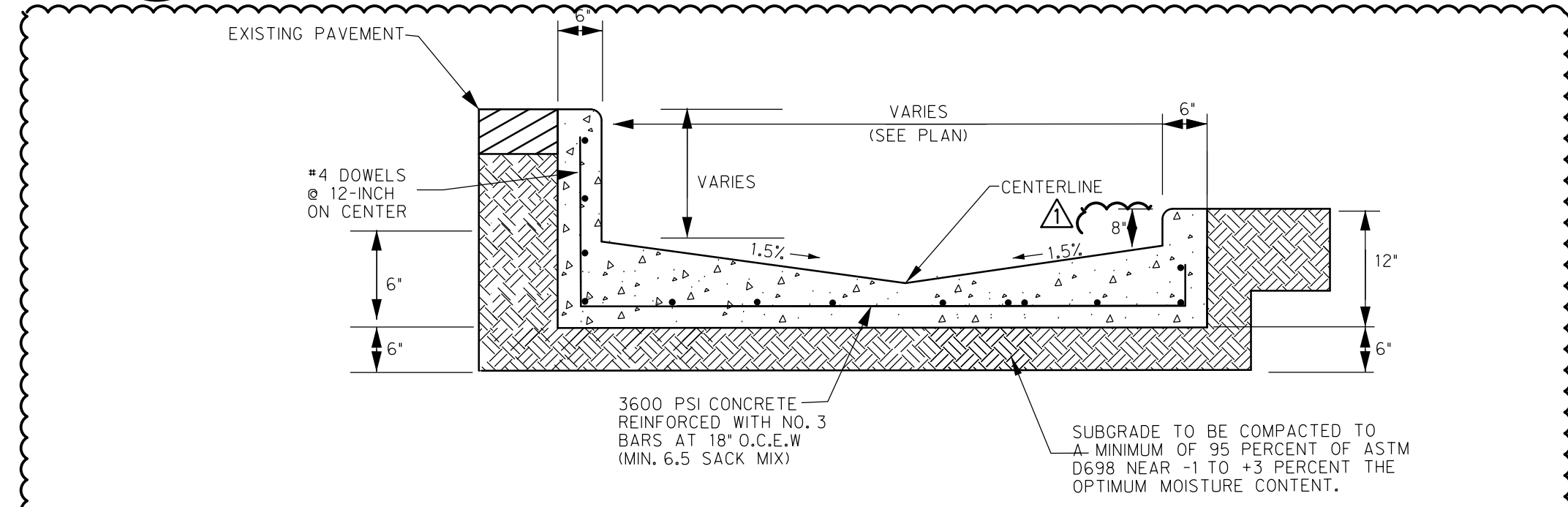
15 CONCRETE FLUME & SIDEWALK FLUME DETAIL
N.T.S.



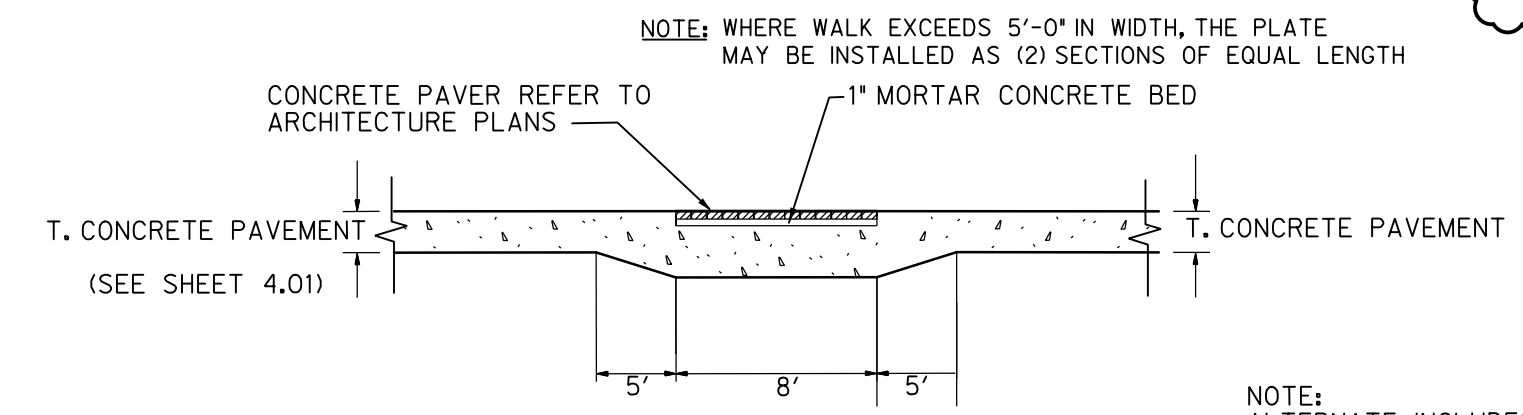
16a FLUME DETAIL
N.T.S.



16b FLUME HYBRID DETAIL
N.T.S.



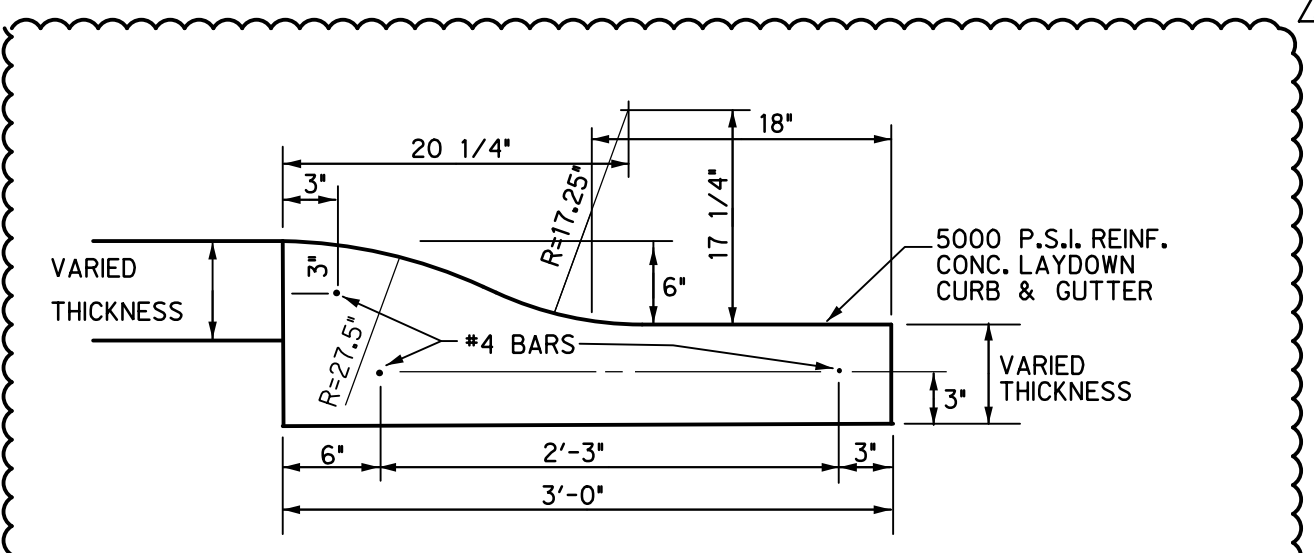
17 CONCRETE PAVER DETAIL (IF APPLICABLE)
N.T.S.



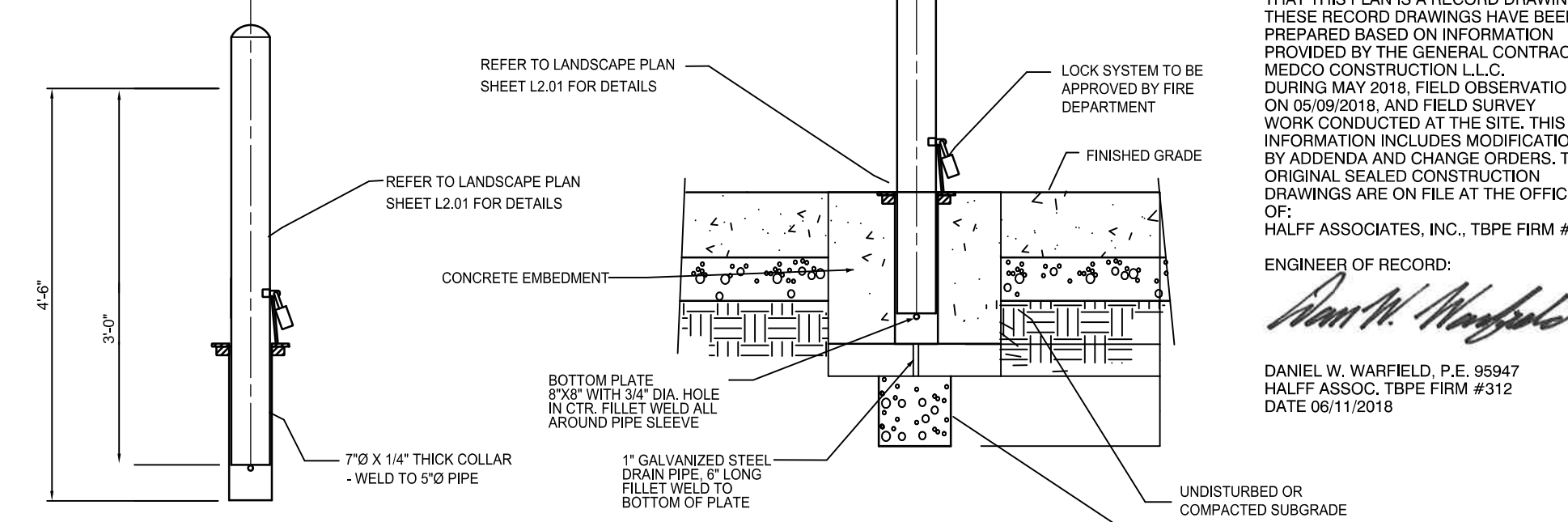
NOTE: WHERE WALK EXCEEDS 5'-0" IN WIDTH, THE PLATE MAY BE INSTALLED AS (2) SECTIONS OF EQUAL LENGTH

NOTE: ALTERNATE INCLUDES OWNER APPROVED COLOR STAMP CONCRETE

18 ROLLED CURB DETAIL
N.T.S.



19 REMOVABLE GALVANIZED STEEL BOLLARD
N.T.S.



RECORD DRAWING

TO THE BEST OF OUR KNOWLEDGE HALF ASSOCIATES, INC. HEREBY STATES THAT THIS PLAN IS A RECORD DRAWING. THESE RECORD DRAWINGS HAVE BEEN PREPARED BASED ON INFORMATION PROVIDED BY THE GENERAL CONTRACTOR, REDCO CONSTRUCTION L.L.C. DURING MAY 2018. FIELD OBSERVATIONS, ON 06/08/2018, AND FIELD SURVEY WORK CONDUCTED AT THE SITE. THIS INFORMATION INCLUDES MODIFICATIONS BY ADDENDUM AND CHANGE ORDERS. THE ORIGINAL SEALED CONSTRUCTION DRAWINGS ARE ON FILE AT THE OFFICES OF:

HALFF ASSOCIATES, INC. TBPE FIRM #312

ENGINEER OF RECORD:

Daniel W. Warfield, P.E. 95947
HALFF ASSOC. TBPE FIRM #312
DATE 06/11/2018

Revision No.	Date	Description
1	04/25/2017	REVISED TO ADDRESS CITY COMMENTS
2	10/03/2017	GENERAL, ADDED P.L. NUMBER, AND SITE DIMENSIONS
3	06/11/2018	RECORD DRAWINGS



The seal appearing on this document was authorized by Daniel W. Warfield, P.E. 95947 on 10-03-2017. Absence of a sealed document without proper notification to the responsible engineer is an offense under the Texas Engineering Practice Act. The record copy of this drawing is on file at the offices of Half Associates, Inc., 2803 Parkwood Blvd., Frisco, Texas 75034. TBPE FIRM #312.

Project No.:	31697
Issued:	08/01/2017
Drawn By:	TRS
Checked By:	DWW
Scale:	AS NOTED
Sheet Title	PAVING DETAILS
Sheet Number	C4.02

LAKE POINTE CHURCH
NEW CHAPEL / EDUCATION BUILDING
701 Interstate 30 Rockwall, TX 75087

