

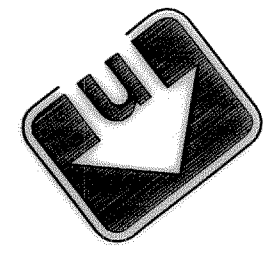
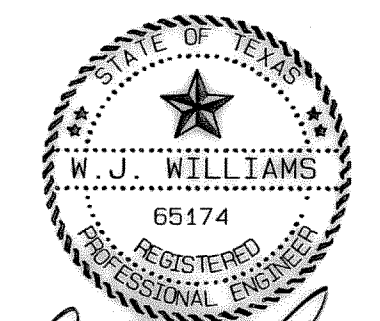
NOTE:  
 ALL PAVING SHALL BE 6" OF 3000 psi  
 (COMPRESSIVE STRENGTH AT 28 DAYS)  
 CONCRETE WITH STEEL REINFORCEMENT  
 OF #3 BARS SPACED AT 24" ON CENTER  
 EACH WAY. SUBGRADE SHALL BE SCARIFIED  
 TO A DEPTH OF AT LEAST 6" AND COMPACTED  
 TO 95% STANDARD DENSITY WITHIN ONE  
 PERCENTAGE POINT BELOW TO THREE PERCENTAGE  
 POINTS ABOVE THE MATERIAL'S OPTIMUM  
 MOISTURE CONTENT.

CAUTION:  
 EXISTING UTILITIES AND UNDERGROUND FACILITIES  
 OF THESE PLANS HAVE BEEN LOCATED FROM REFERENCE  
 INFORMATION AND AS-BUILT PLANS. IT SHALL BE  
 THE RESPONSIBILITY OF THE CONTRACTOR TO VERIFY  
 HORIZONTAL AND VERTICAL LOCATION OF ALL EXISTING  
 UTILITIES PRIOR TO CONSTRUCTION. THE CONTRACTOR  
 SHALL TAKE NECESSARY PRECAUTIONS TO PROTECT ALL  
 EXISTING UTILITIES AND WILL BE RESPONSIBLE FOR  
 ANY DAMAGE TO SAID UTILITIES. THE CONTRACTOR  
 SHALL NOTIFY ALL UTILITY COMPANIES PRIOR TO  
 CONSTRUCTION.

**RECORD DRAWING**  
 This is to certify that changes and corrections  
 have been made to conform to the contractor's  
 record of this project.  
 Signed: *[Signature]* Date: 4/12/00  
 Graham Associates, Inc.  
 CONSULTING ENGINEERS & PLANNERS

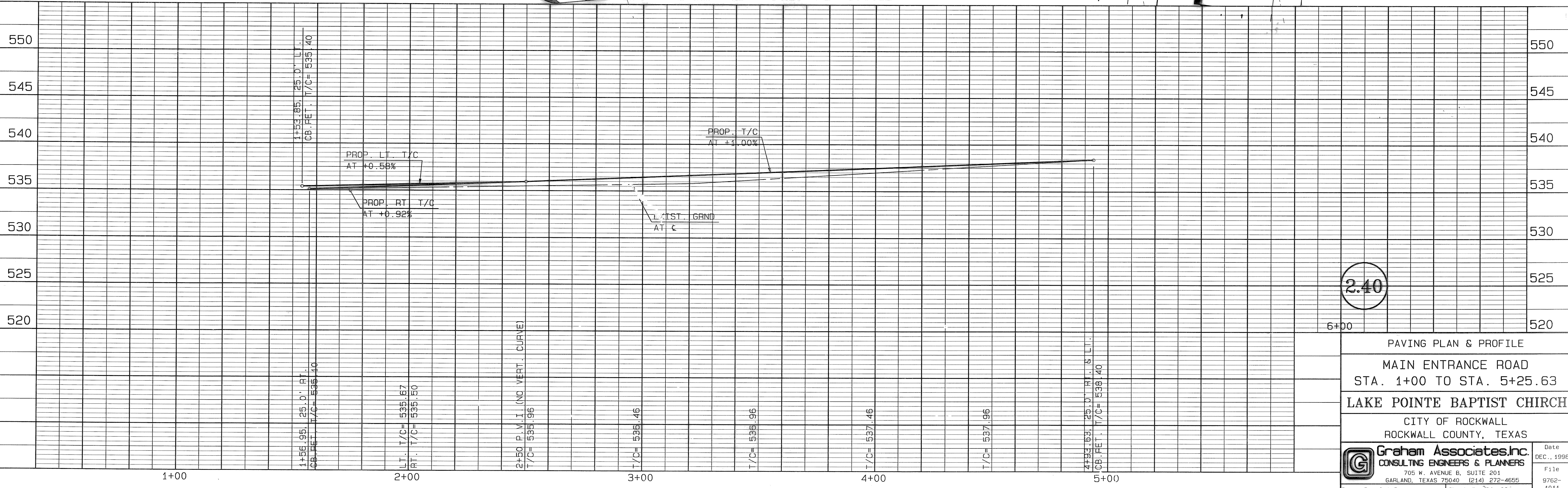
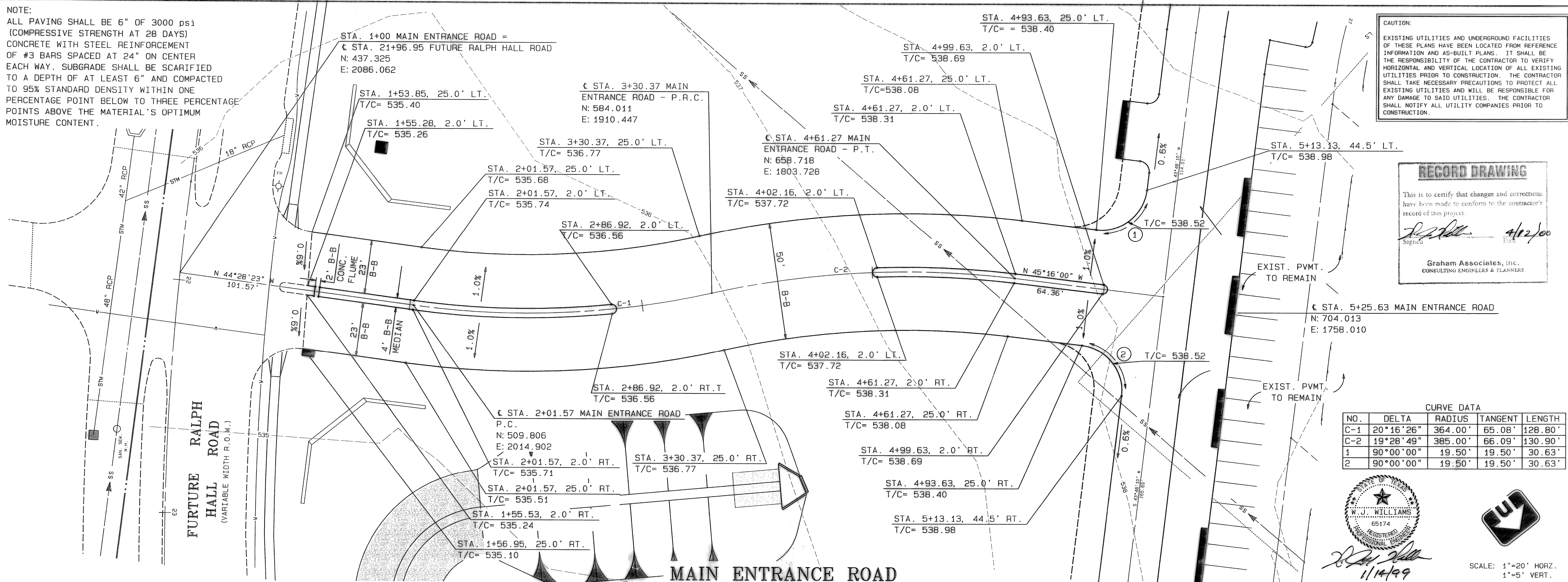
CURVE DATA

NO.	DELTA	RADIUS	TANGENT	LENGTH
C-1	20°16'26"	364.00'	65.08'	128.80'
C-2	19°28'49"	385.00'	66.09'	130.90'
1	90°00'00"	19.50'	19.50'	30.63'
2	90°00'00"	19.50'	19.50'	30.63'



*[Signature]*  
 1/14/99

SCALE: 1"=20' HORZ.  
 1"=5' VERT.



2.40

PAVING PLAN & PROFILE  
 MAIN ENTRANCE ROAD  
 STA. 1+00 TO STA. 5+25.63  
 LAKE POINTE BAPTIST CHURCH  
 CITY OF ROCKWALL  
 ROCKWALL COUNTY, TEXAS

Graham Associates, Inc.  
 CONSULTING ENGINEERS & PLANNERS  
 705 W. AVENUE B, SUITE 201  
 GARLAND, TEXAS 75040 (214) 272-4555  
 Drawn By: G.A.I. Sheet 24 of 27

Date: DEC., 1998  
 File: 9762-1011