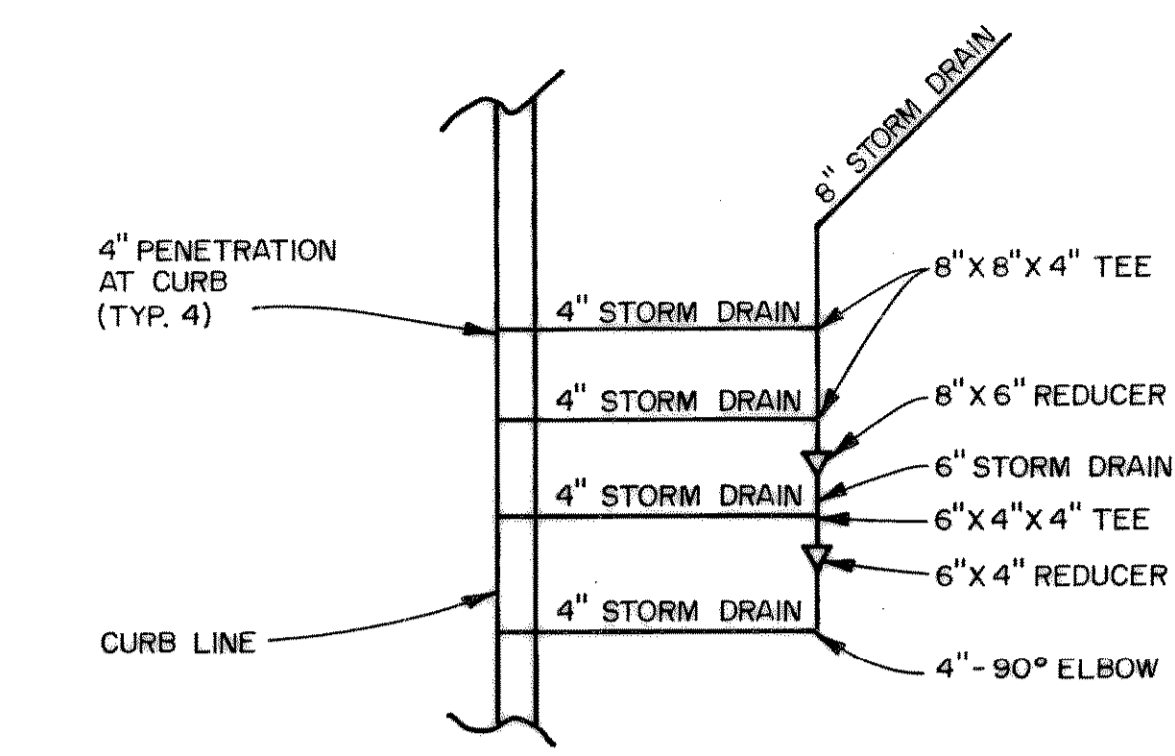
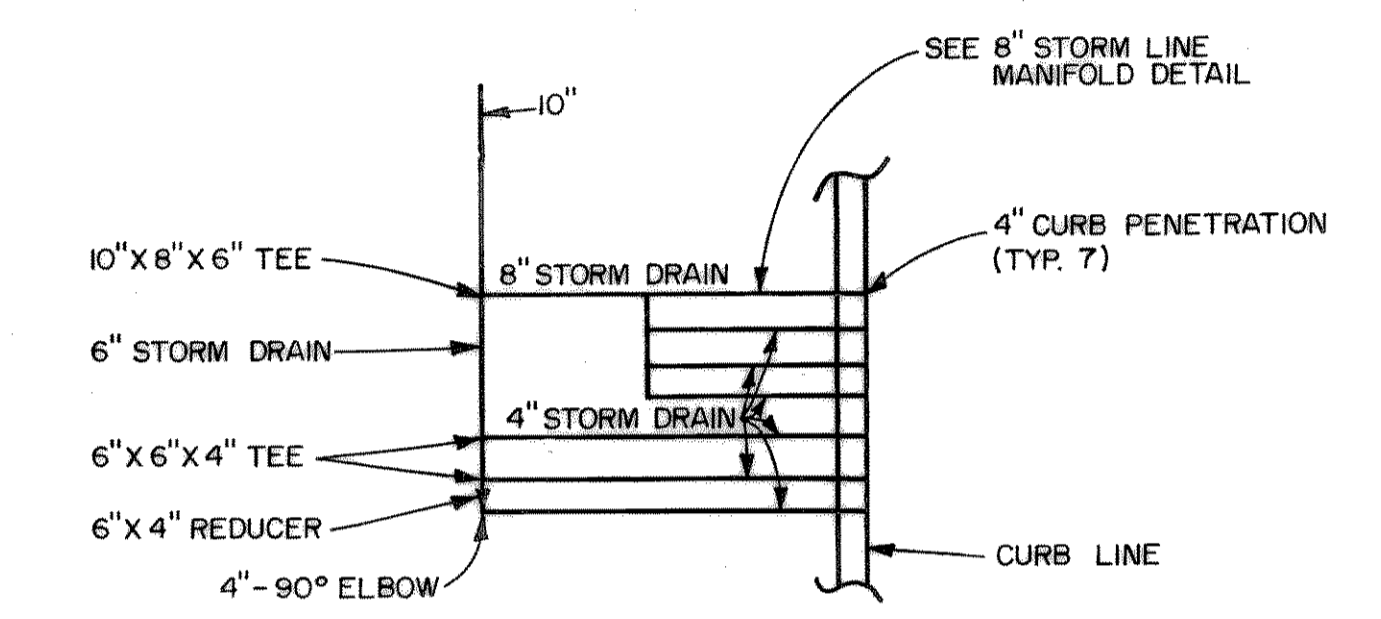


**CAUTION:**  
 EXISTING UTILITIES AND UNDERGROUND FACILITIES OF THESE PLANS HAVE BEEN LOCATED FROM REFERENCE INFORMATION AND AS-BUILT PLANS. IT SHALL BE THE RESPONSIBILITY OF THE CONTRACTOR TO VERIFY HORIZONTAL AND VERTICAL LOCATION OF ALL EXISTING UTILITIES PRIOR TO CONSTRUCTION. THE CONTRACTOR SHALL TAKE NECESSARY PRECAUTIONS TO PROTECT ALL EXISTING UTILITIES AND WILL BE RESPONSIBLE FOR ANY DAMAGE TO SAID UTILITIES. THE CONTRACTOR SHALL NOTIFY ALL UTILITY COMPANIES PRIOR TO CONSTRUCTION.

**NOTE:**  
 STORM DRAIN PIPE MATERIAL MAY VARY FROM R.C.P. ON LINES EXCEPT STORM DRAIN LINE "A". ALTERNATE MATERIAL SHALL BE SUBMITTED TO THE CITY ENGINEER FOR APPROVAL.

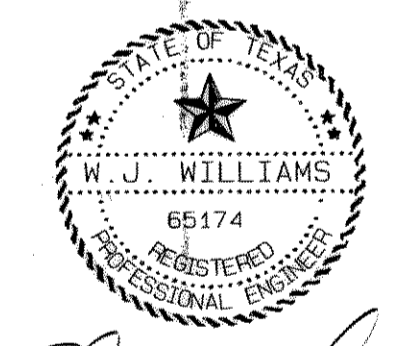


**8" STORM LINE MANIFOLD TYPICAL DETAIL**

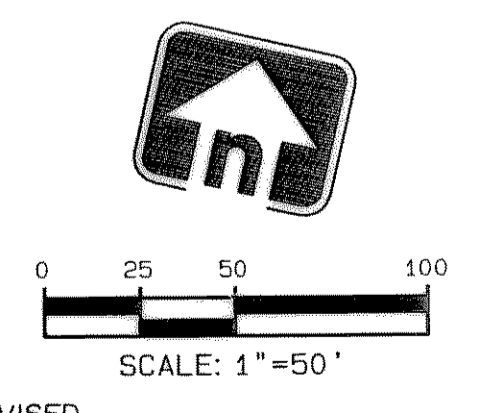


**10" STORM LINE MANIFOLD DETAIL**

**RECORD DRAWING**  
 This is to certify that changes and corrections have been made to conform to the contractor's record of this project.  
 Signed: *[Signature]* 4/12/00  
 Date: 4/12/00  
 Graham Associates, Inc.  
 CONSULTING ENGINEERS & PLANNERS



*[Signature]*  
 1/10/99



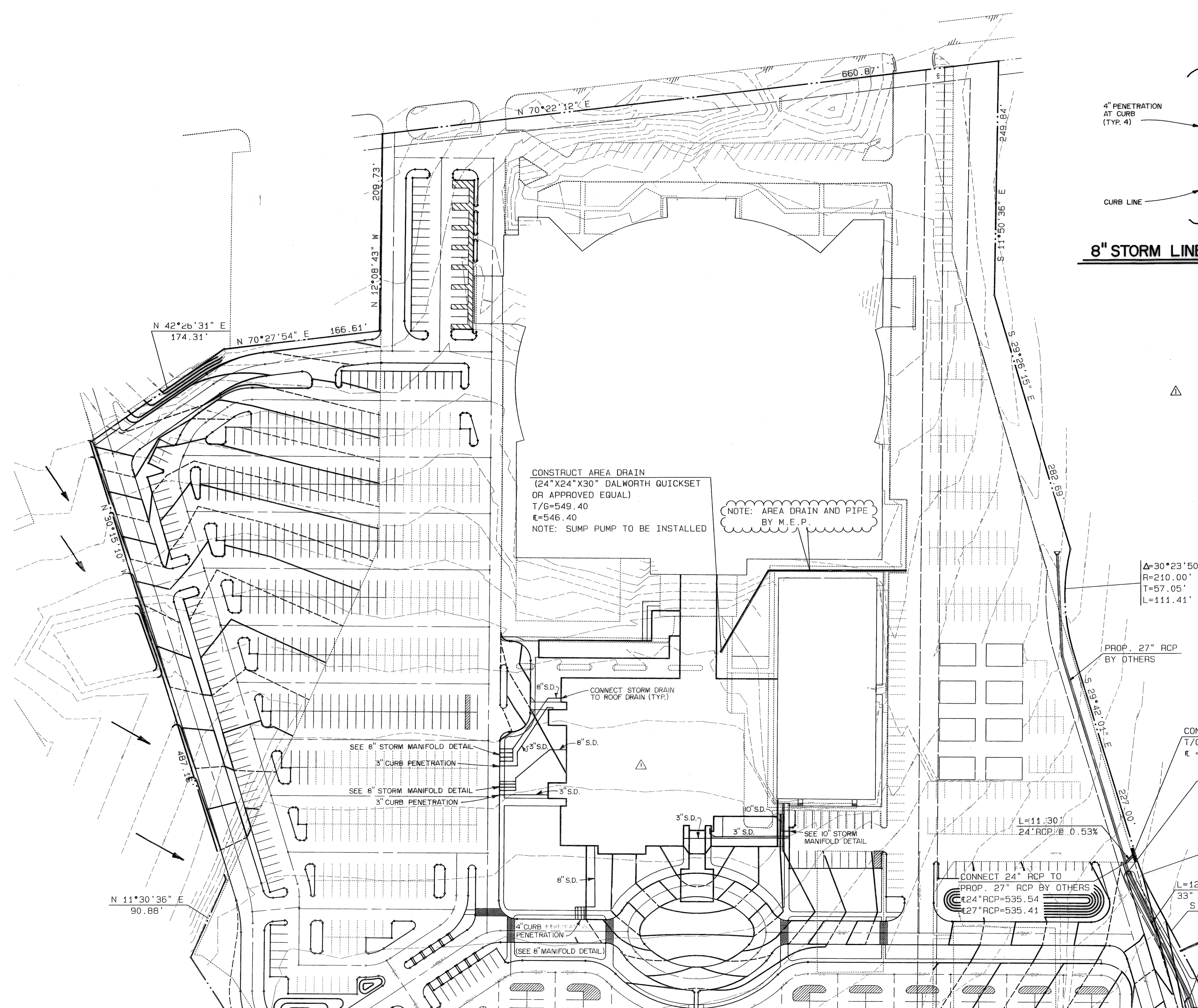
**2.24**

**CAUTION:**  
 EXISTING WATERLINE IN THIS AREA. FIELD VERIFY LOCATION PRIOR TO CONSTRUCTION.

**STORM DRAIN PLAN**  
**LOT 1, BLOCK A**  
**LAKE POINTE**  
**BAPTIST CHURCH**

CITY OF ROCKWALL  
 ROCKWALL COUNTY, TEXAS

**Graham Associates, Inc.**  
 CONSULTING ENGINEERS & PLANNERS  
 616 SIX FLAGS DRIVE, SUITE 400  
 ARLINGTON, TEXAS 76011 (817) 640-8535  
 Date: NOV., 1998  
 F11e  
 9762  
 -1011



CONSTRUCT AREA DRAIN  
 (24" X 24" X 30" DALWORTH QUICKSET  
 OR APPROVED EQUAL)  
 T/G=549.40  
 E=546.40  
 NOTE: SUMP PUMP TO BE INSTALLED

NOTE: AREA DRAIN AND PIPE  
 BY M.E.P.

$\Delta=30^{\circ}23'50"$   
 $R=210.00'$   
 $T=57.05'$   
 $L=111.41'$

PROP. 27" RCP  
 BY OTHERS

CONST. 15' C.I. NO. 2  
 $T/C = 539.60$   
 $E = 535.60$

STA. 6+85.07  
 REMOVE EXISTING HEADWALL  
 CONNECT 33" RCP TO EXIST. 27" RCP  
 $E 27" RCP = 535.25$   
 $E 33" RCP = 534.75$

$\Delta=11^{\circ}25'32"$   
 $R=210.00'$   
 $T=21.01'$   
 $L=41.88'$   
 $L=125.50'$   
 33" RCP  
 $S 41^{\circ}07'33" E$   
 $94.02'$

STA. 5+59.57  
 $P.I. = 10^{\circ}28'29"$   
 $\Delta=11^{\circ}41'18"$   
 $R=190.00'$   
 $T=19.45'$   
 $L=38.76'$   
 $L=91.15'$   
 33" RCP

CONNECT 24" RCP TO  
 PROP. 27" RCP BY OTHERS  
 $E 24" RCP = 535.54$   
 $E 27" RCP = 535.41$

SEE SHEET 2. 25