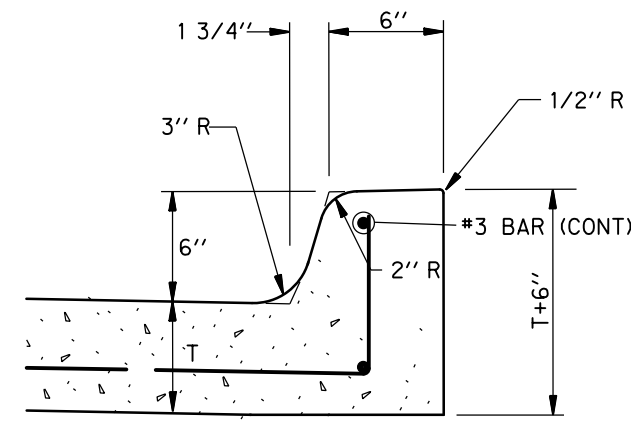
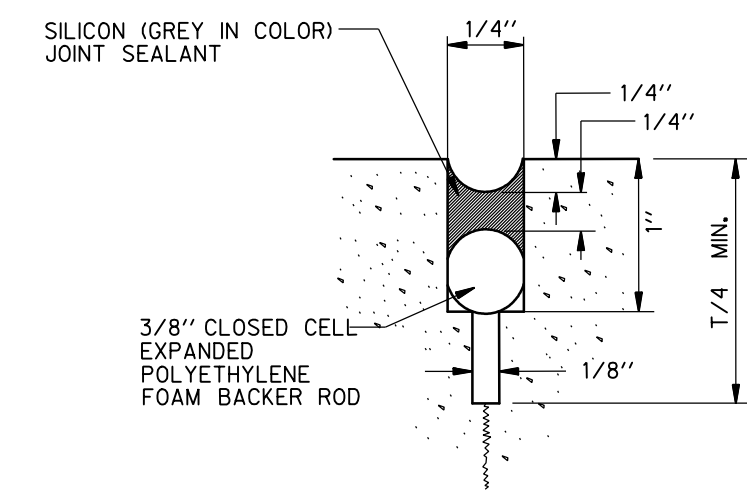


1. DOWEL BARS SHALL BE DRILLED INTO PAVEMENT HORIZONTALLY BY USE OF A MECHANICAL RIG.
2. DRILLING BY HAND IS NOT ACCEPTABLE, PUSHING DOWEL BARS INTO GREEN CONCRETE NOT ACCEPTABLE.
3. DOWEL BARS SHALL BE EPOXIED IN PLACE WITHIN EXISTING PAVEMENT.

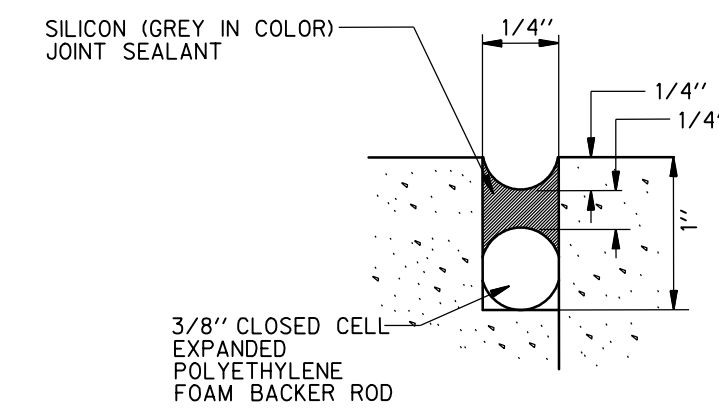
1 LONGITUDINAL BUTT JOINT
N.T.S.



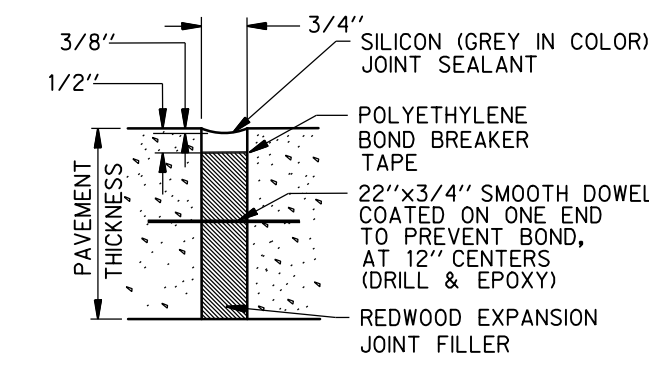
6 6" INTEGRAL CURB
N.T.S.



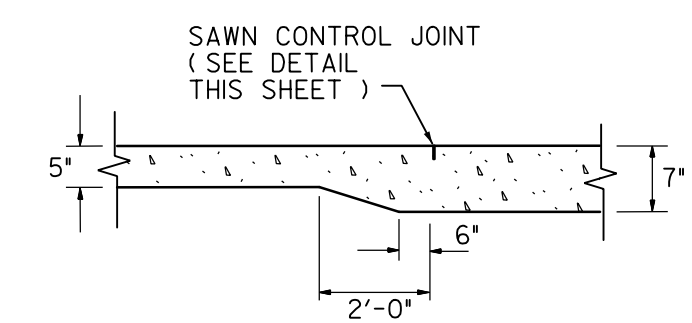
2 SAWN CONTROL JOINT (LONGITUDINAL & TRANSVERSE)
N.T.S.



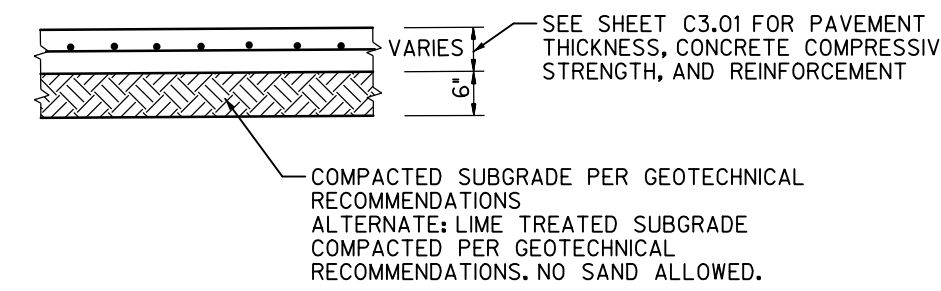
3 CONSTRUCTION JOINT
N.T.S.



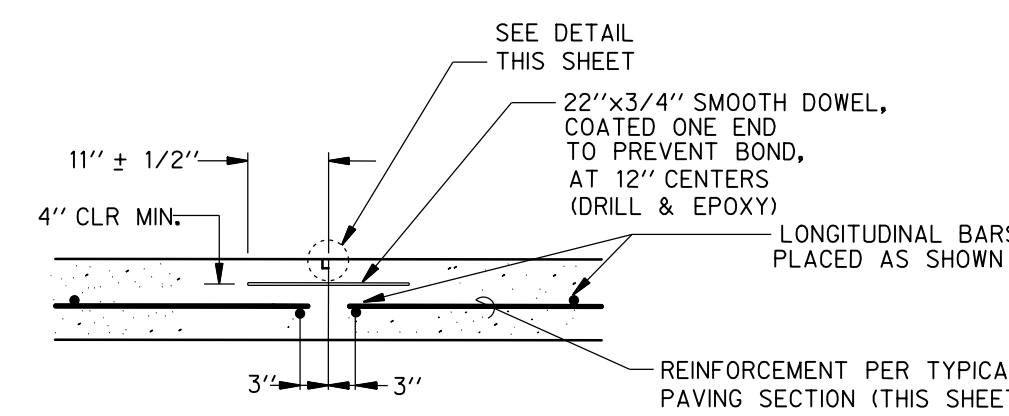
4 EXPANSION JOINT
N.T.S.



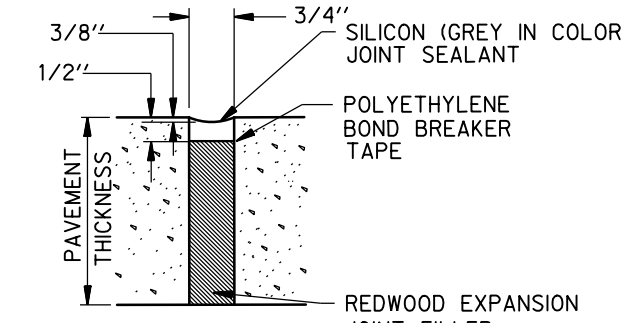
5 PAVEMENT TRANSITION
N.T.S.



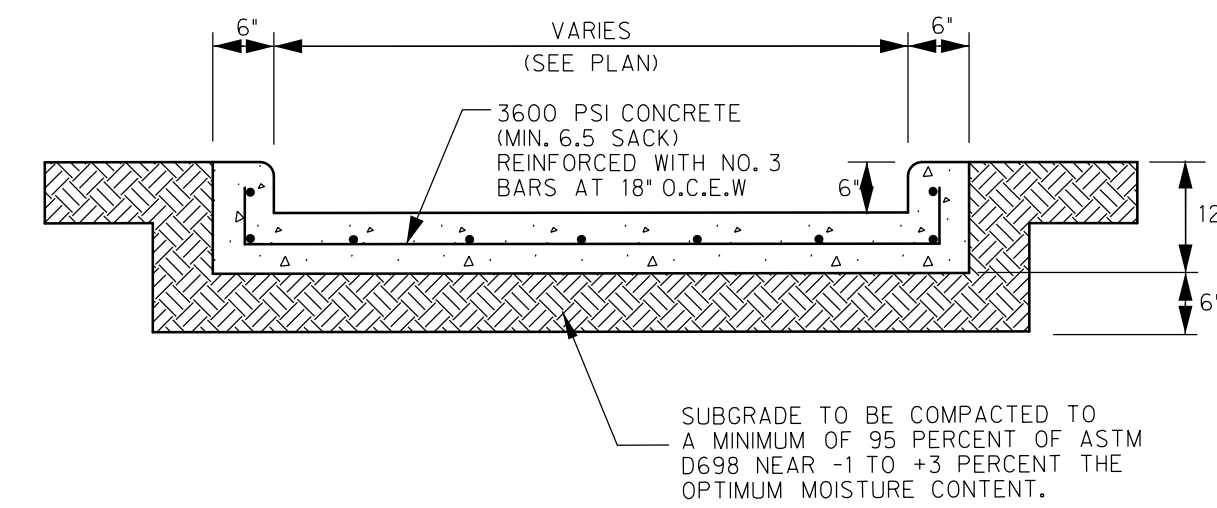
7 TYPICAL PAVEMENT SECTION
N.T.S.



8 OPTIONAL CONSTRUCTION JOINT
N.T.S.



9 ISOLATION JOINT
N.T.S.



10 FLUME DETAIL
N.T.S.

LAKE POINTE CHURCH
SOUTHEAST PARKING LOT EXPANSION
701 Interstate 30 Rockwall, TX 75087

HALFF
3803 PARKWOOD BLVD, SUITE 800
FRISCO, TEXAS 75034-2640
TEL: (214) 618-4574
FAX: (214) 618-4574
TBP# FIRM #F-312

Revision No.	Date	Description
1	09/30/2019	RECORD DRAWINGS



The seal appearing on this document was authorized by Daniel W. Warfield, P.E. 95947 on 05/15/19. Alteration of a sealed document without proper notification to the responsible engineer is an offense under the Texas Engineering Practice Act. The record copy of this drawing is on file at the office of Halff Associates, Inc., 3803 Parkwood Blvd., Frisco, Texas 75034. TBP# FIRM #F-312.

RECORD DRAWING

TO THE BEST OF OUR KNOWLEDGE HALFF ASSOCIATES, INC. HEREBY STATES THAT THIS PLAN IS A RECORD DRAWING. THESE RECORD DRAWINGS HAVE BEEN PREPARED BASED ON FIELD OBSERVATIONS, ON 09/10/2019, AND FIELD SURVEY WORK CONDUCTED AT THE SITE. THE ORIGINAL SEALED CONSTRUCTION DRAWINGS ARE ON FILE AT THE OFFICES OF:
HALFF ASSOCIATES, INC., TBP# FIRM #312
ENGINEER OF RECORD:

Daniel W. Warfield
DANIEL W. WARFIELD # E. 95947
HALFF ASSOC. TBP# FIRM #312
DATE 09/30/2019

Project No.:	35866
Issued:	9/30/2019
Drawn By:	CAD
Checked By:	DWW
Scale:	AS NOTED
Sheet Title	PAVING DETAILS
Sheet Number	C3.02