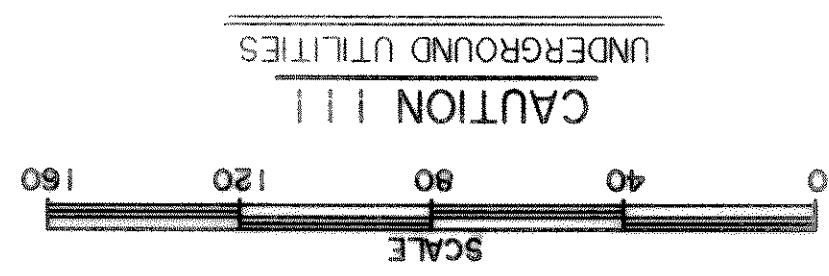
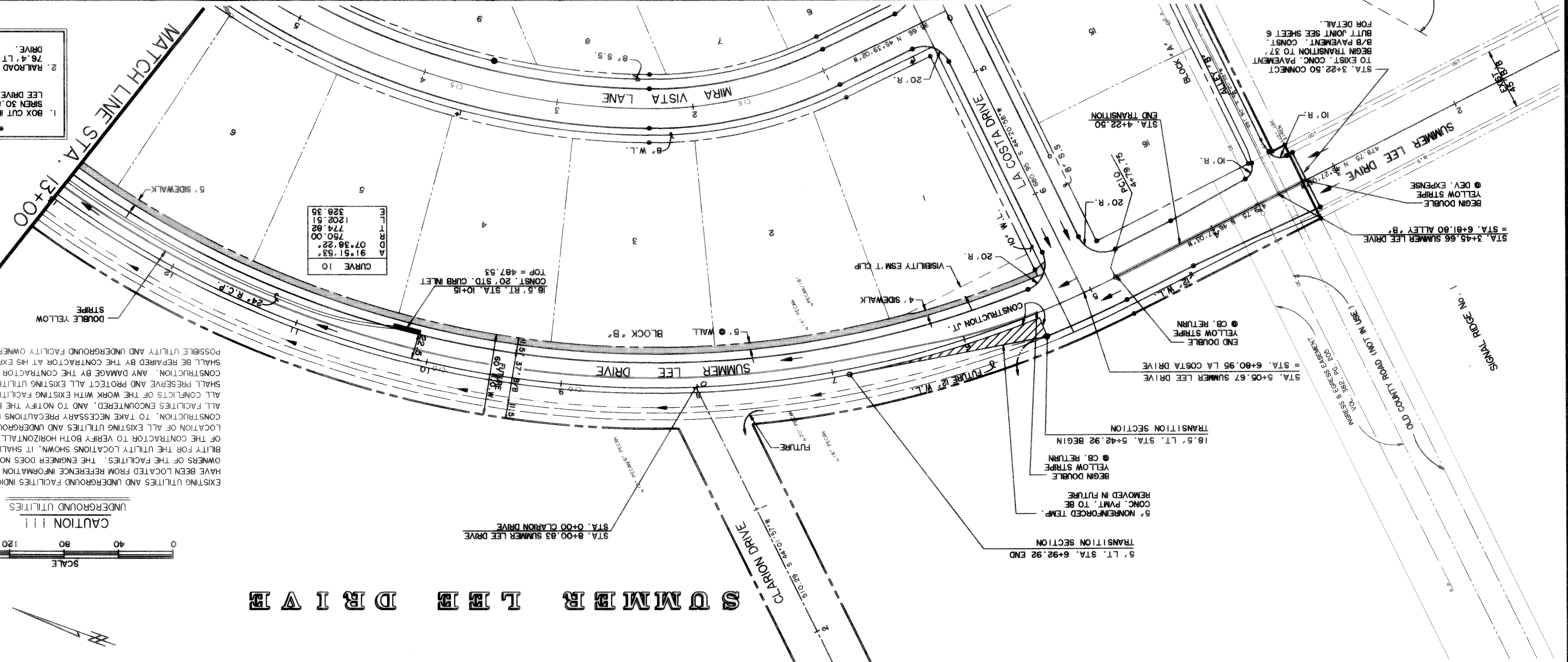


# SUMMER LEE DRIVE



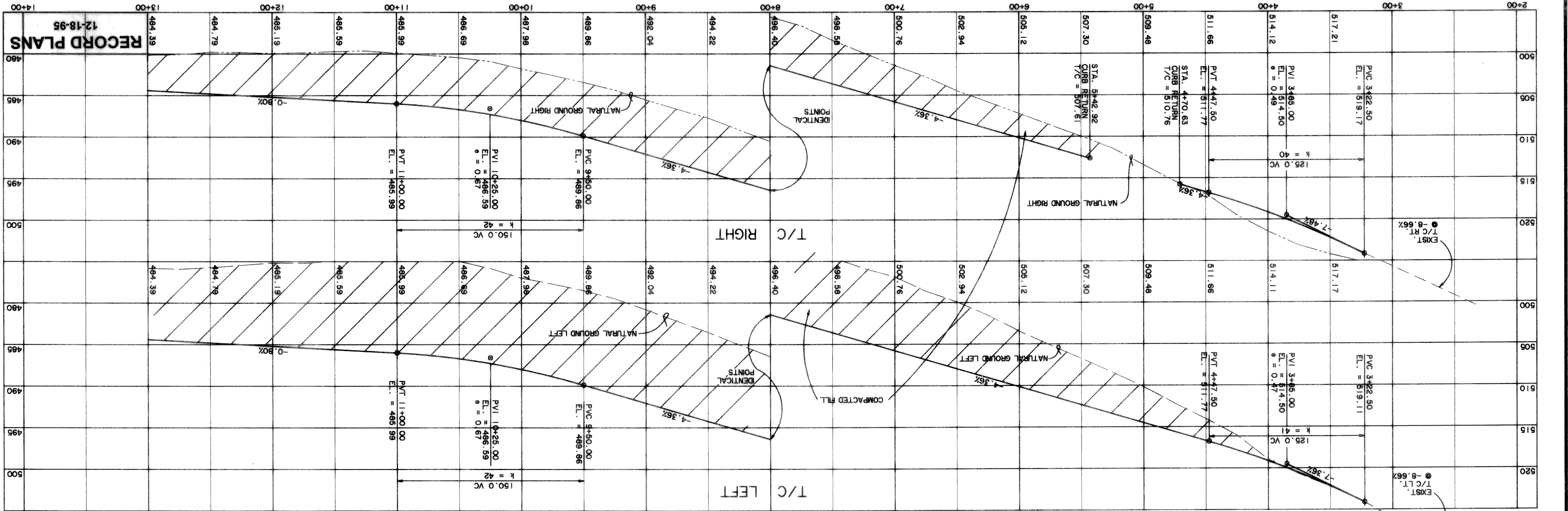
EXISTING UTILITIES AND UNDERGROUND FACILITIES INDICATED ON THESE PLANS HAVE BEEN LOCATED FROM REFERENCE INFORMATION SUPPLIED BY VARIOUS OWNERS OF THE FACILITIES. THE ENGINEER DOES NOT ACCEPT THE RESPONSIBILITY FOR THE UTILITY LOCATIONS SHOWN. IT SHALL BE THE RESPONSIBILITY OF THE CONTRACTOR TO VERIFY BOTH HORIZONTALLY AND VERTICALLY THE LOCATION OF ALL EXISTING UTILITIES AND UNDERGROUND FACILITIES PRIOR TO CONSTRUCTION. TO TAKE NECESSARY PRECAUTIONS IN ORDER TO PROTECT ALL FACILITIES ENCOUNTERED, AND TO NOTIFY THE ENGINEER PROMPTLY OF ANY CONFLICTS OF THE WORK WITH EXISTING UTILITIES. THE CONTRACTOR SHALL PRESERVE AND PROTECT ALL EXISTING UTILITIES FROM DAMAGE DURING CONSTRUCTION. ANY DAMAGE BY THE CONTRACTOR TO EXISTING UTILITIES SHALL BE REPAIRED BY THE CONTRACTOR AT HIS EXPENSE. CONTACT ALL POSSIBLE UTILITY AND UNDERGROUND FACILITY OWNERS.



- \* BENCH MARKS \*
- 1. BOX CUT IN CONC. BASE OF CIVIL DEFENSE LEE DRIVE. ELEV. 520.33
- 2. RAILROAD SPIKE SET IN 25' PECAN TREE 76.4' LT. ST. STA. 11+37 SUMMER LEE DRIVE. ELEV. 471.34

91.61	53.22
07.38	22.74
750.00	82.77
1302.51	51.82
328.35	35.51

CURVE 10



SHEET NO. 7

RECORD PLANS  
12-18-95

**SUMMER LEE DRIVE**  
PLAN AND PROFILES  
STA. 3+00 TO STA. 13+00

**CITY OF ROCKWALL**  
ROCKWALL COUNTY, TEXAS

PREPARED BY:  
**WIA WIER & ASSOCIATES, INC.**  
ENGINEERS SURVEYORS LAND PLANNERS

4300 BELTWAY PLACE, SUITE 130, ARLINGTON, TEXAS 76010 MEMO (817) 467-7700  
3008 SOUTH FREEMAN, FORT WORTH, TEXAS 76110 (817) 926-0212