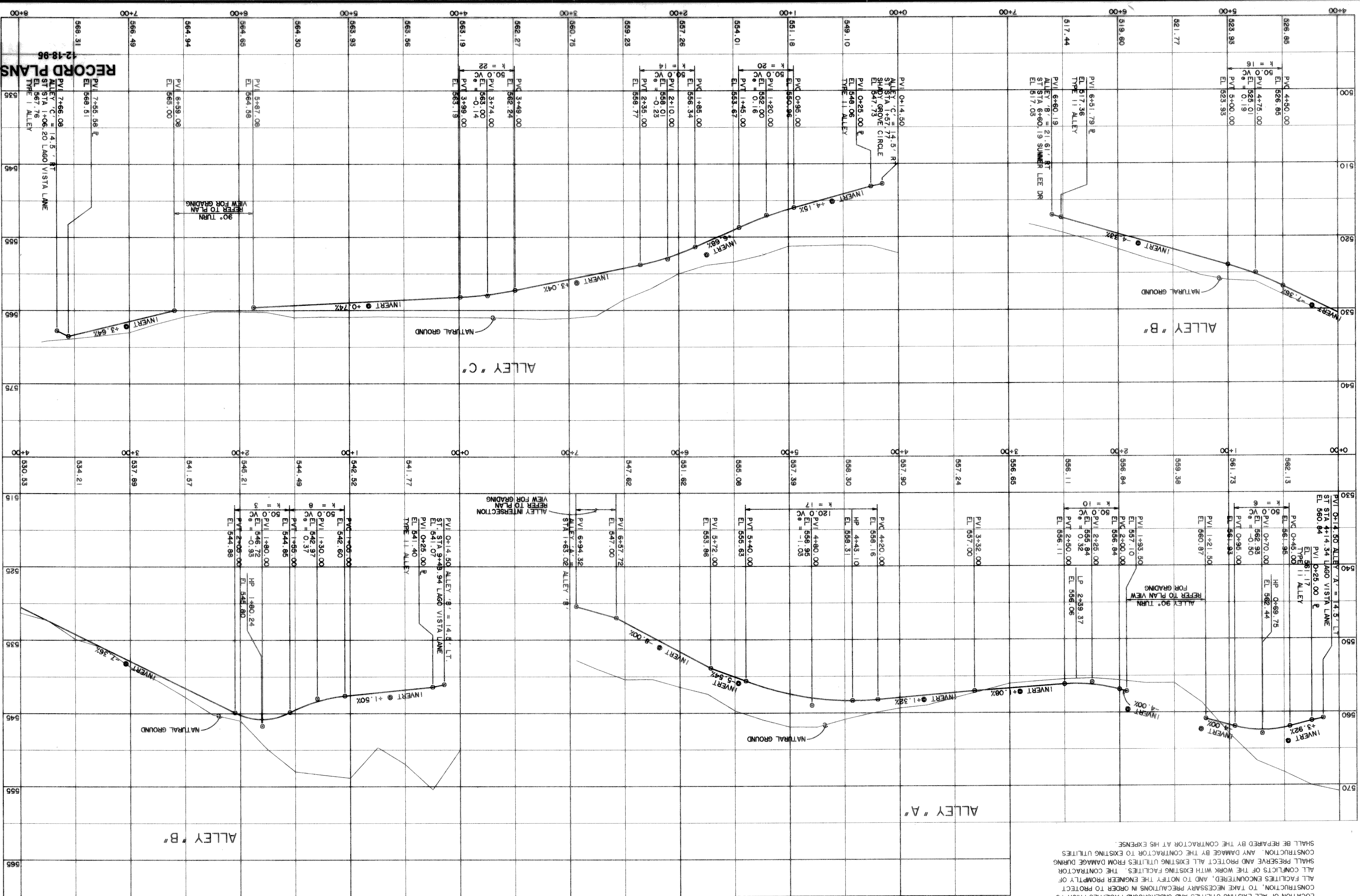


EXISTING UTILITIES AND UNDERGROUND FACILITIES INDICATED ON THESE PLANS HAVE BEEN LOCATED FROM REFERENCE INFORMATION SUPPLIED BY VARIOUS OWNERS OF THE UTILITIES. THE ENGINEER DOES NOT ACCEPT THE RESPONSIBILITY FOR THE LOCATION SHOWN. IT SHALL BE THE RESPONSIBILITY OF THE CONTRACTOR TO VERIFY BOTH HORIZONTALLY AND VERTICALLY THE LOCATION OF ALL EXISTING UTILITIES AND UNDERGROUND FACILITIES PRIOR TO CONSTRUCTION, TO TAKE NECESSARY PRECAUTIONS IN ORDER TO PROTECT ALL FACILITIES ENCOUNTERED, AND TO NOTIFY THE ENGINEER PROMPTLY OF ANY CONFLICTS OF THE WORK WITH EXISTING UTILITIES. THE CONTRACTOR SHALL PRESERVE AND PROTECT ALL EXISTING UTILITIES FROM DAMAGE DURING CONSTRUCTION. ANY DAMAGE BY THE CONTRACTOR TO EXISTING UTILITIES SHALL BE REPAIRED BY THE CONTRACTOR AT HIS EXPENSE.

CAUTION !!!  
UNDERGROUND UTILITIES

- BENCH MARKS •
- 1. BOX CUT IN CONC. BASE OF CIVIL DEFENSE LEE DRIVE.  
SIVEN 30.8' RT. STA. 3+22 SUMMER  
ELEV. 520.33
- 2. RAILROAD SPIKE SET IN 25' PECAN TREE DRIVE.  
LT. STA. 1+37 SUMMER LEE  
ELEV. 471.34



SCALE:  
HORIZONTAL 1" = 40'  
VERTICAL 1" = 8'

RECORD PLANS  
12-18-95

SHEET NO. 16  
WIER & ASSOCIATES, INC.  
DATE: 07-14-94  
LAST SHEET EDIT.  
WIER & ASSOCIATES, INC.  
CORPORATE  
10884  
STATE OF TEXAS  
REGISTERED PROFESSIONAL ENGINEER  
LAND SURVEYING  
1989

ALLEY PROFILES  
A, B & C

CITY OF ROCKWALL  
ROCKWALL COUNTY, TEXAS

PREPARED BY:  
WIER & ASSOCIATES, INC.  
ENGINEERS SURVEYORS LAND PLANNERS  
4300 BELTWAY PLACE SUITE 130 AMARON, TEXAS 76018 MEMO (817) 677-7700  
3908 SOUTH FREEMAN FORT WORTH, TEXAS 76110 (817) 925-0212