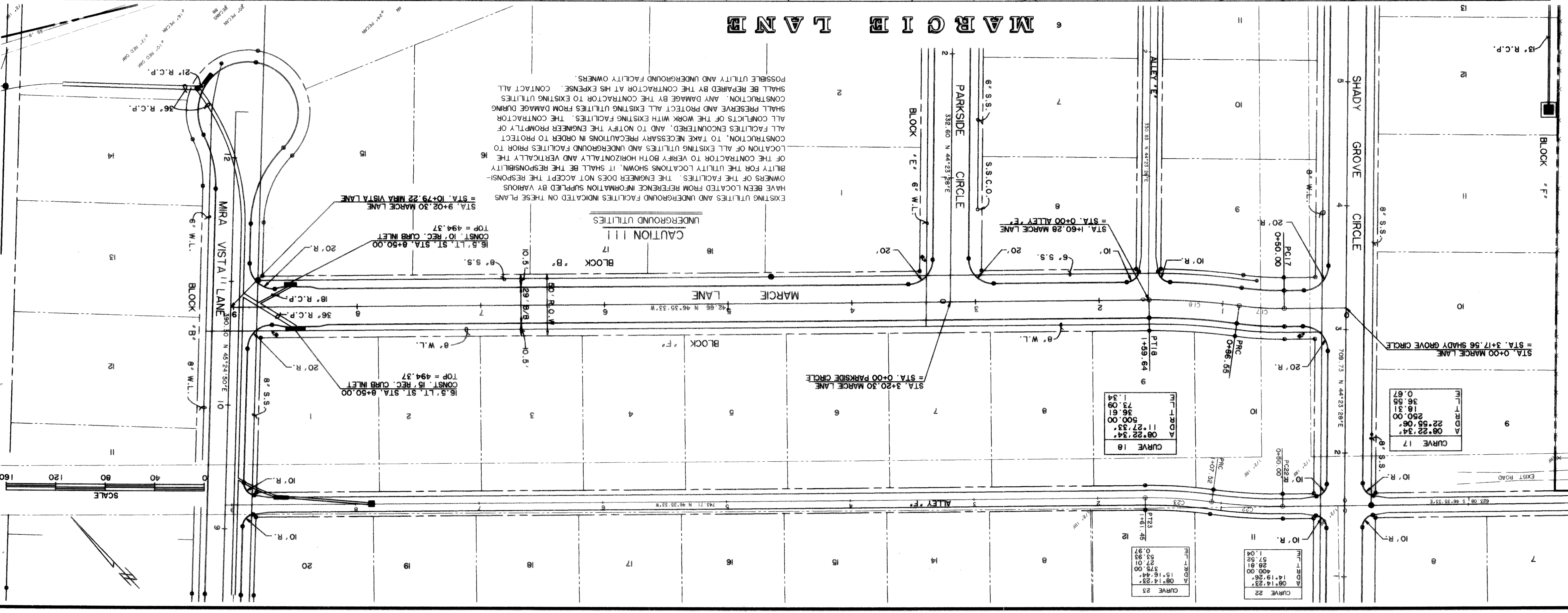


\* BENCH MARKS \*

1. BOX CUT IN CONC. BASE OF CIVIL DEFENSE SREN 30.8 RT. ST. STA. 3+22 SUMMER LEE DRIVE. ELEV. 520.33

2. RAILROAD SPIKE SET IN 25' PECAN TREE 76.4' LT. ST. STA. 1+37 SUMMER LEE DRIVE. ELEV. 471.34



EXISTING UTILITIES AND UNDERGROUND FACILITIES INDICATED ON THESE PLANS HAVE BEEN LOCATED FROM REFERENCE INFORMATION SUPPLIED BY VARIOUS OWNERS OF THE FACILITIES. THE ENGINEER DOES NOT ACCEPT THE RESPONSIBILITY FOR THE UTILITY LOCATIONS SHOWN. IT SHALL BE THE RESPONSIBILITY OF THE CONTRACTOR TO VERIFY BOTH HORIZONTALLY AND VERTICALLY THE LOCATION OF ALL EXISTING UTILITIES AND UNDERGROUND FACILITIES PRIOR TO CONSTRUCTION. TO TAKE NECESSARY PRECAUTIONS IN ORDER TO PROTECT ALL FACILITIES ENCOUNTERED, AND TO NOTIFY THE ENGINEER PROPERTY OF THE WORK WITH EXISTING FACILITIES. THE CONTRACTOR SHALL PRESERVE AND PROTECT ALL EXISTING UTILITIES FROM DAMAGE DURING CONSTRUCTION. ANY DAMAGE BY THE CONTRACTOR TO EXISTING UTILITIES SHALL BE REPAIRED BY THE CONTRACTOR AT HIS EXPENSE. CONTACT ALL POSSIBLE UTILITY AND UNDERGROUND FACILITY OWNERS.

15  
SHEET NO.

12-18-95  
RECORD PLANS

W.A. WIER & ASSOCIATES, INC.  
REGISTERED PROFESSIONAL ENGINEERS  
LAND PLANNERS  
SURVEYORS

430 BELMONT PLACE, SUITE 130, ARLINGTON, TEXAS 76010  
76010 MEMO (817) 461-7700  
3008 SOUTH FREEMAN FORT WORTH, TEXAS 76110 (817) 926-0212

MARCIE LANE  
PLAN AND PROFILES  
STA. 0+00 TO STA. END

CITY OF ROCKWALL  
ROCKWALL COUNTY, TEXAS

PREPARED BY:  
W.A. WIER & ASSOCIATES, INC.  
ENGINEERS SURVEYORS LAND PLANNERS