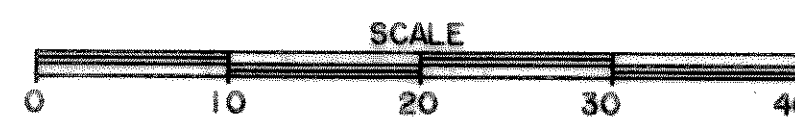
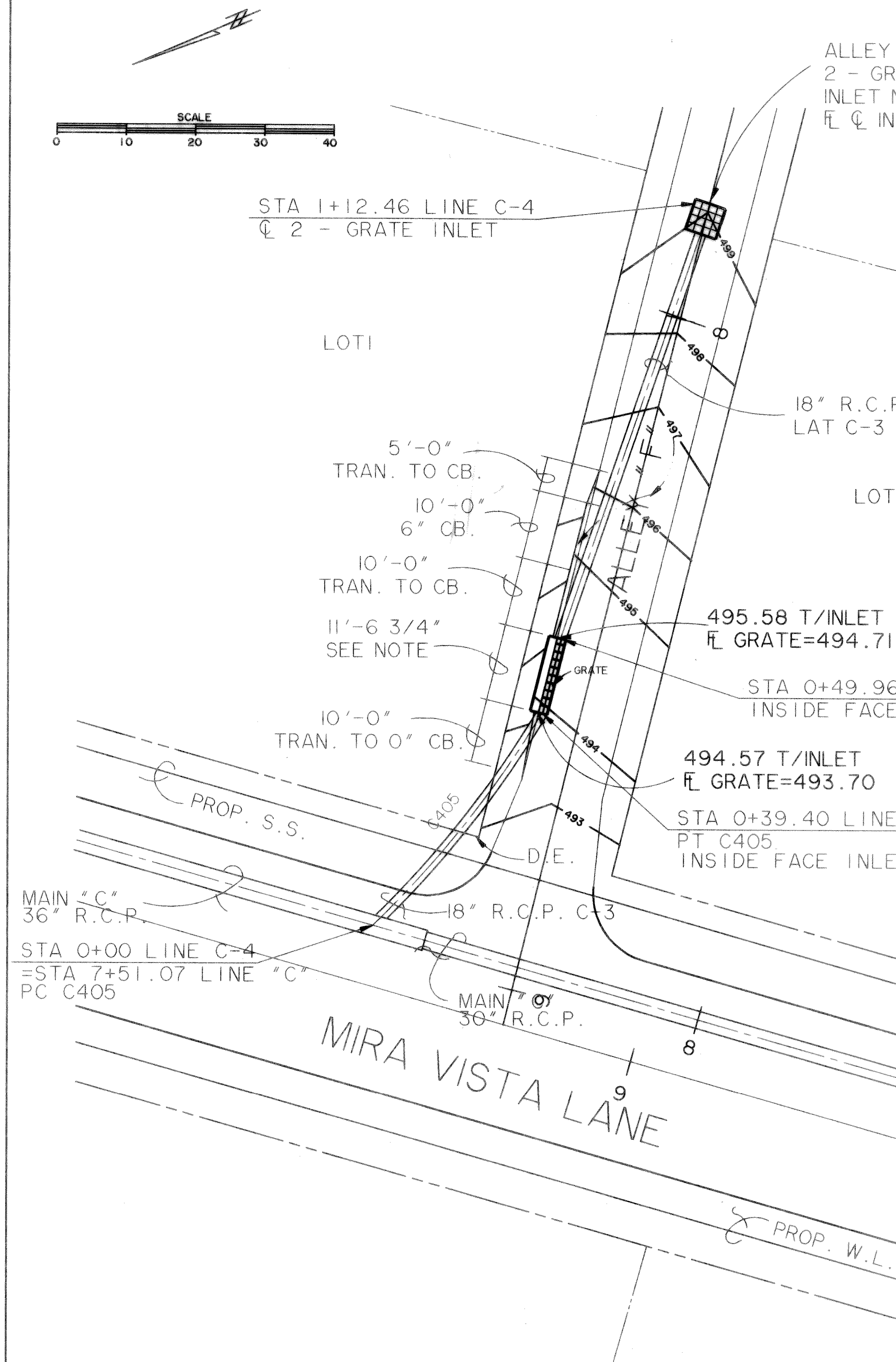


NOTES:

1. CONSTRUCT STANDARD CITY OF DALLAS COMBINATION GRATE INLETS, PAGES 2002 & 2010, EXCEPT AS AMENDED AS FOLLOWS:
  - A. CONSTRUCT 4 GRATE INLETS BY ADDING ADDITIONAL GRATE AND ADDING 6" WIDE FLANGE SUPPORTS.
  - B. CONSTRUCT CROSS SLOPE TO MATCH ALLEY CROSS LINE OF 0.0694 1/1.
  - C. TRANSITION IN & OUT OF INLET AS SHOWN ON PLAN SHEETS.
2. UTILIZE TYPE "L" R-3076 GRATE AND PLACE SLOPPED LOUVERS TO DIRECT FLOW INTO INLET.

**AREA "C"**  
**SPECIAL INLET DETAIL**



ALLEY STA 7+85  
2 - GRATE INLET  
INLET NO. 14  
F.L. INLET = 501.03

MAIN "C"  
36" R.C.P.  
STA 0+00 LINE C-4  
=STA 7+51.07 LINE "C"  
PC C405

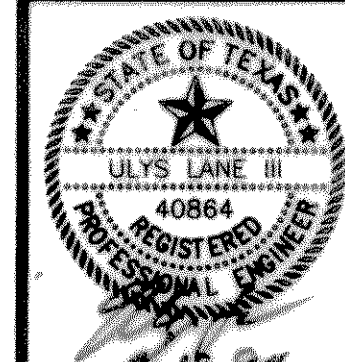
**AREA "D"**  
**SPECIAL INLET DETAIL**

**RECORD PLANS**  
12-18-95

PREPARED BY:  
**WIA WIER & ASSOCIATES, INC.**  
ENGINEERS SURVEYORS LAND PLANNERS  
4300 BELTWAY PLACE, SUITE 130, ARLINGTON, TEXAS 76010 (817) 467-7700  
3908 SOUTH FREEMAN, FORT WORTH, TEXAS 76110 (817) 926-0212

**CITY OF ROCKWALL**  
**ROCKWALL COUNTY, TEXAS**

**SPECIAL**  
**INLET DETAILS**



COPYRIGHT ©  
WIER & ASSOCIATES, INC.  
LAST SHEET EDIT  
DATE 07-14-94  
FILE MET  
WA# 93049  
**SHEET NO.**  
26