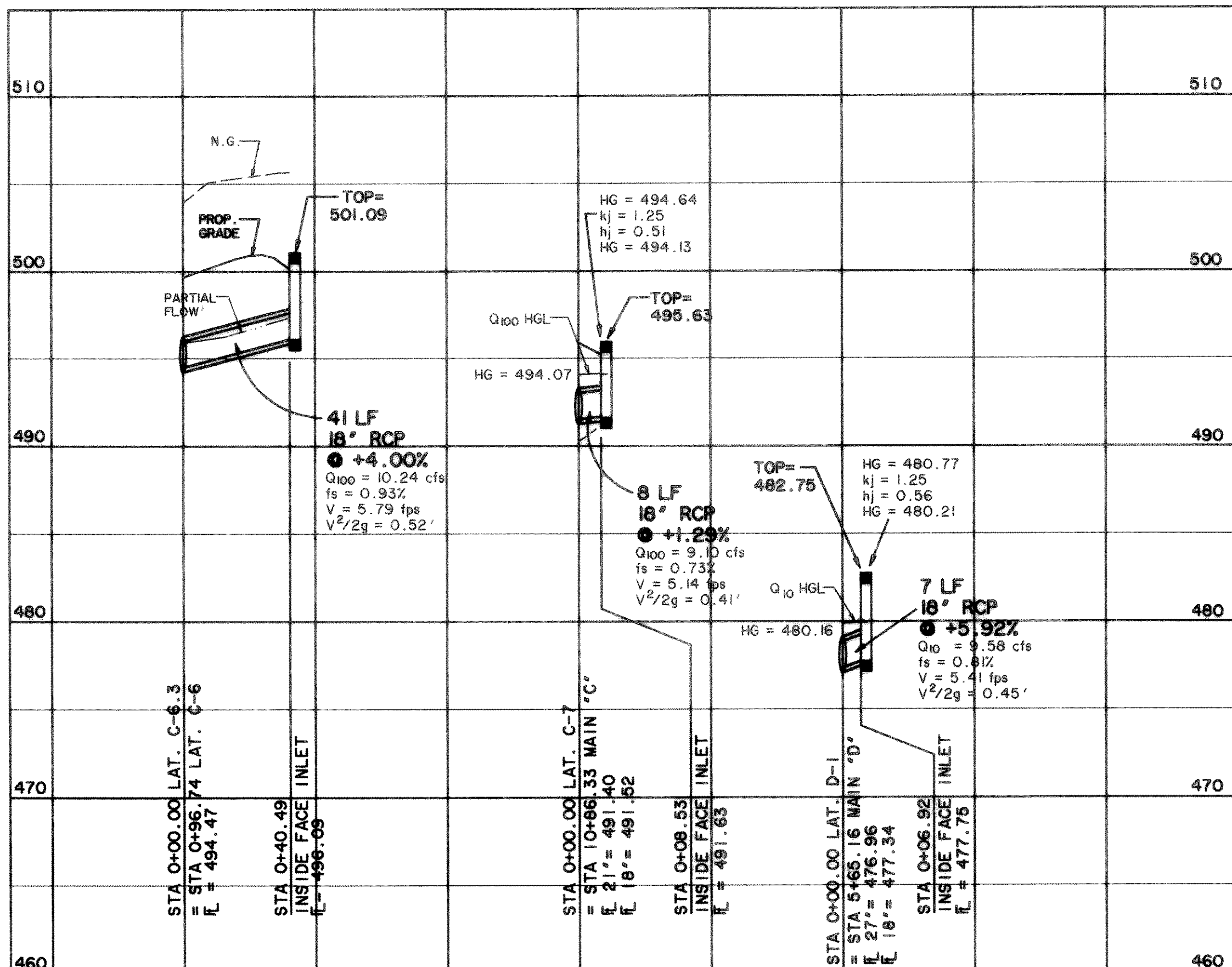


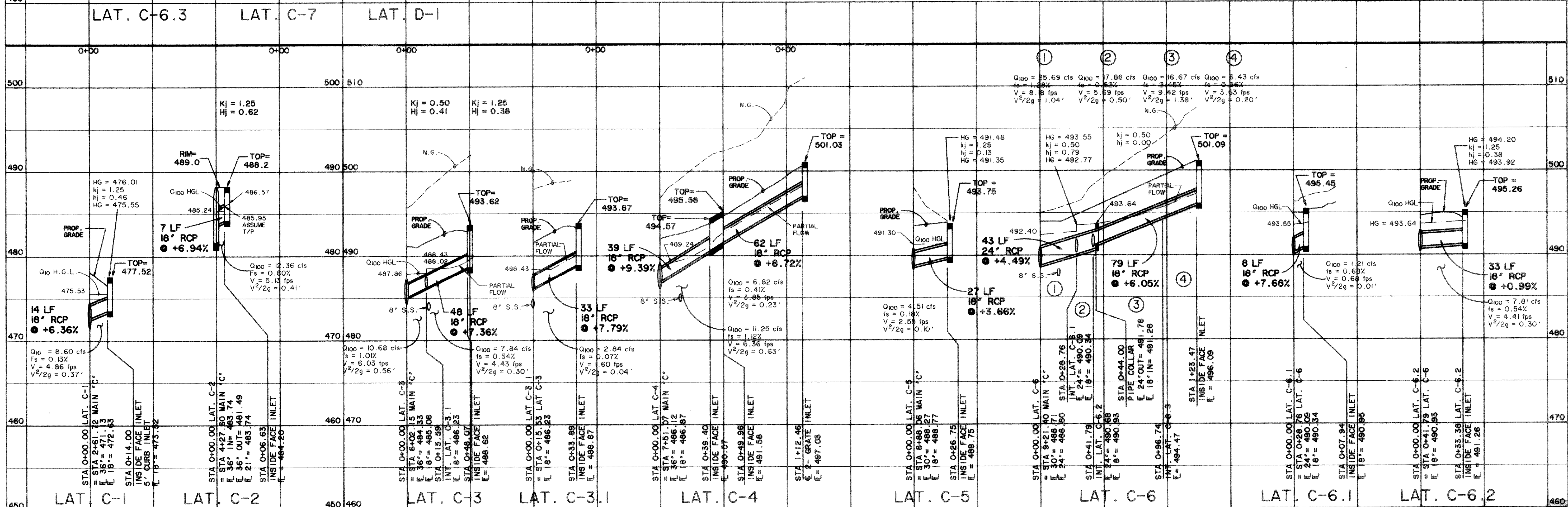
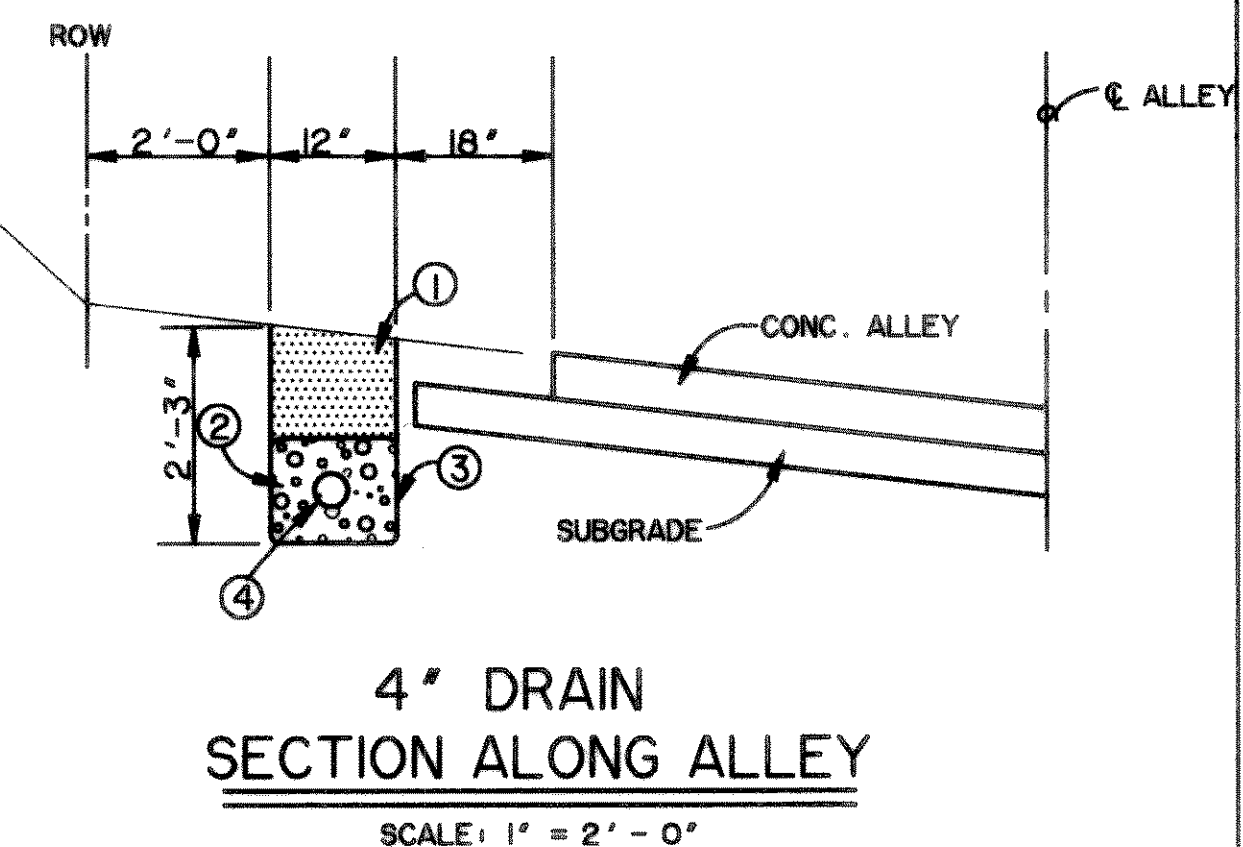
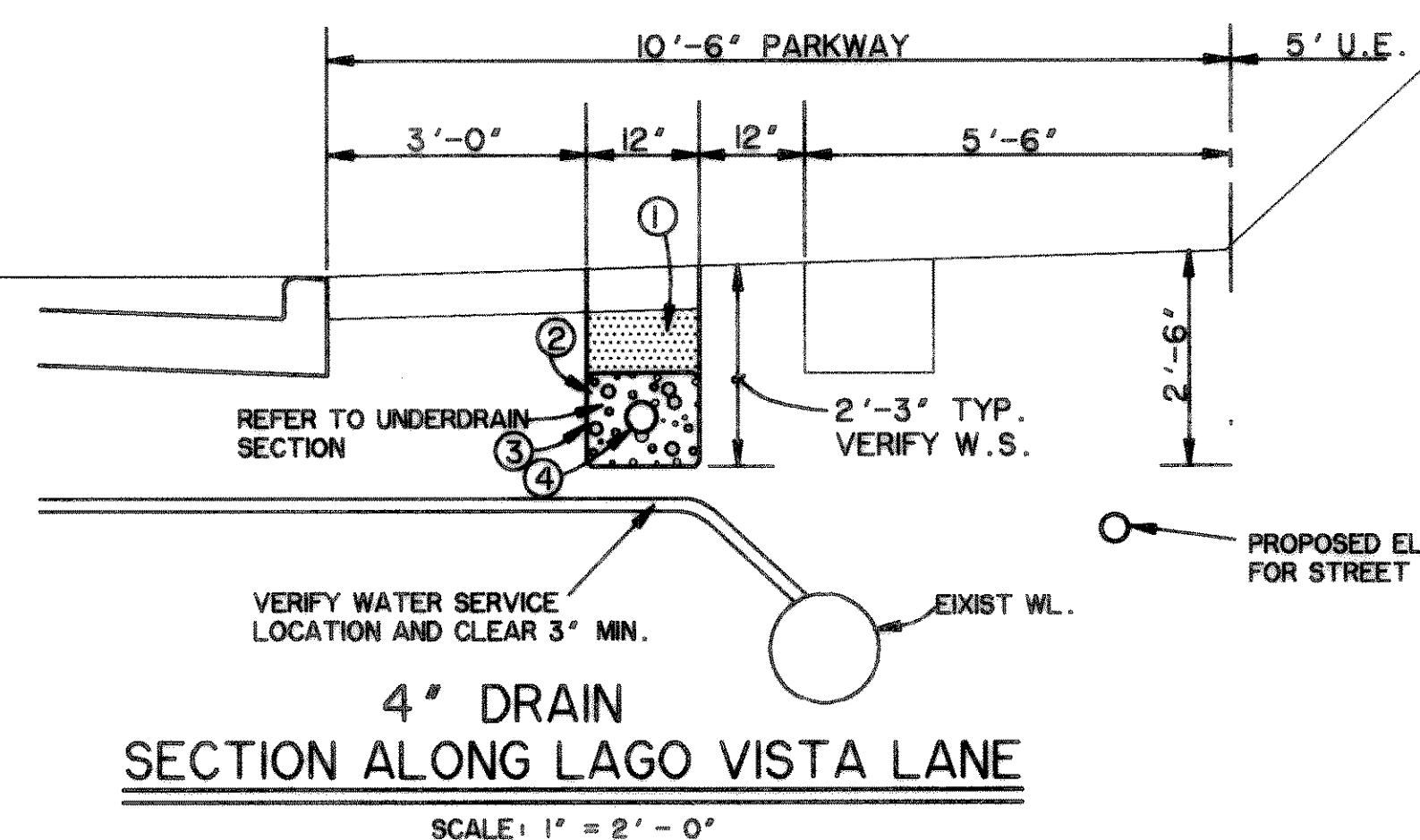
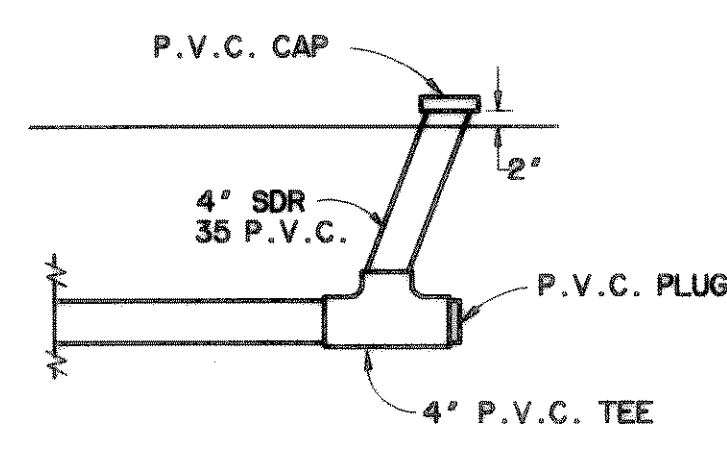
**CAUTION !!!**  
UNDERGROUND UTILITIES

- \* BENCH MARKS \***
- BOX CUT IN CONC. BASE OF CIVIL DEFENSE SIREN 30.8' RT. ST. STA. 3+22 SUMMER LEE DRIVE. ELEV. 520.33
  - RAILROAD SPIKE SET IN 25' PECAN TREE 76.4' LT. ST. STA. 11+37 SUMMER LEE DRIVE. ELEV. 471.34

EXISTING UTILITIES AND UNDERGROUND FACILITIES INDICATED ON THESE PLANS HAVE BEEN LOCATED FROM REFERENCE INFORMATION SUPPLIED BY VARIOUS OWNERS OF THE FACILITIES. THE ENGINEER DOES NOT ACCEPT THE RESPONSIBILITY FOR THE UTILITY LOCATIONS SHOWN. IT SHALL BE THE RESPONSIBILITY OF THE CONTRACTOR TO VERIFY BOTH HORIZONTALLY AND VERTICALLY THE LOCATION OF ALL EXISTING UTILITIES AND UNDERGROUND FACILITIES PRIOR TO CONSTRUCTION, TO TAKE NECESSARY PRECAUTIONS IN ORDER TO PROTECT ALL FACILITIES ENCOUNTERED, AND TO NOTIFY THE ENGINEER PROMPTLY OF ALL CONFLICTS OF THE WORK WITH EXISTING FACILITIES. THE CONTRACTOR SHALL PRESERVE AND PROTECT ALL EXISTING UTILITIES FROM DAMAGE DURING CONSTRUCTION. ANY DAMAGE BY THE CONTRACTOR TO EXISTING UTILITIES SHALL BE REPAIRED BY THE CONTRACTOR AT HIS EXPENSE. CONTACT ALL POSSIBLE UTILITY AND UNDERGROUND FACILITY OWNERS.



- WHERE PIPE IS SHOWN TO BE PERFORATED INSTALL ASTM C 33 FINE AGGREGATE ANGULAR SAND. WHERE PIPE IS SHOWN TO BE SOLID INSTALL 4" PVC SDR35 PIPE BACKFILL TRENCH WITH NATIVE MATERIAL COMPACTED TO 95% OF STD. PROCTOR DENSITY.
- ASTM C33 COARSE AGGREGATE #57 WASHED GRAVEL
- ENVELOPE WASHED GRAVEL WITH NONWOVEN FILTER FABRIC NICOLOR 40/30 A, POLY FILTER G/B, MIRIFY 750X.
- 4" SDR TYPE "A" PERFORATED PLASTIC PIPE AT MINIMUM 1% GRADE

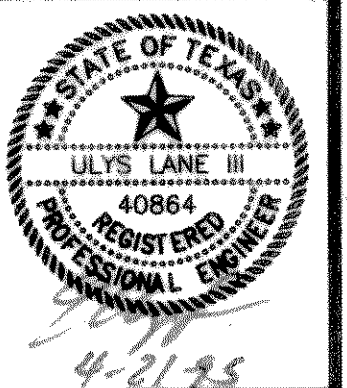


**RECORD PLANS**  
12-18-95

PREPARED BY:  
**WIER & ASSOCIATES, INC.**  
ENGINEERS SURVEYORS LAND PLANNERS  
4300 BELTWAY PLACE SUITE 130 ARLINGTON TEXAS 76010 (817) 461-7700  
3008 SOUTH FREEMAN FORT WORTH, TEXAS 76110 (817) 926-0212

**CITY OF ROCKWALL**  
**ROCKWALL COUNTY, TEXAS**

**STORM DRAIN**  
**LATERAL PROFILES**



COPYRIGHT © WIER & ASSOCIATES, INC.  
LAST SHEET EDIT  
DATE 06-20-95  
FILE 95024  
W/AH 95049  
**SHEET NO.**  
25