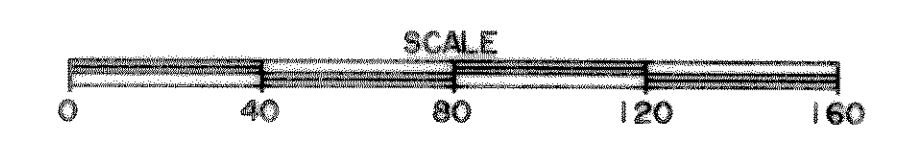


# SUMMER LEE DRIVE

M. J. BARKSDALE SURVEY ABST. No. 11  
E. TEAL SURVEY ABST. No. 207

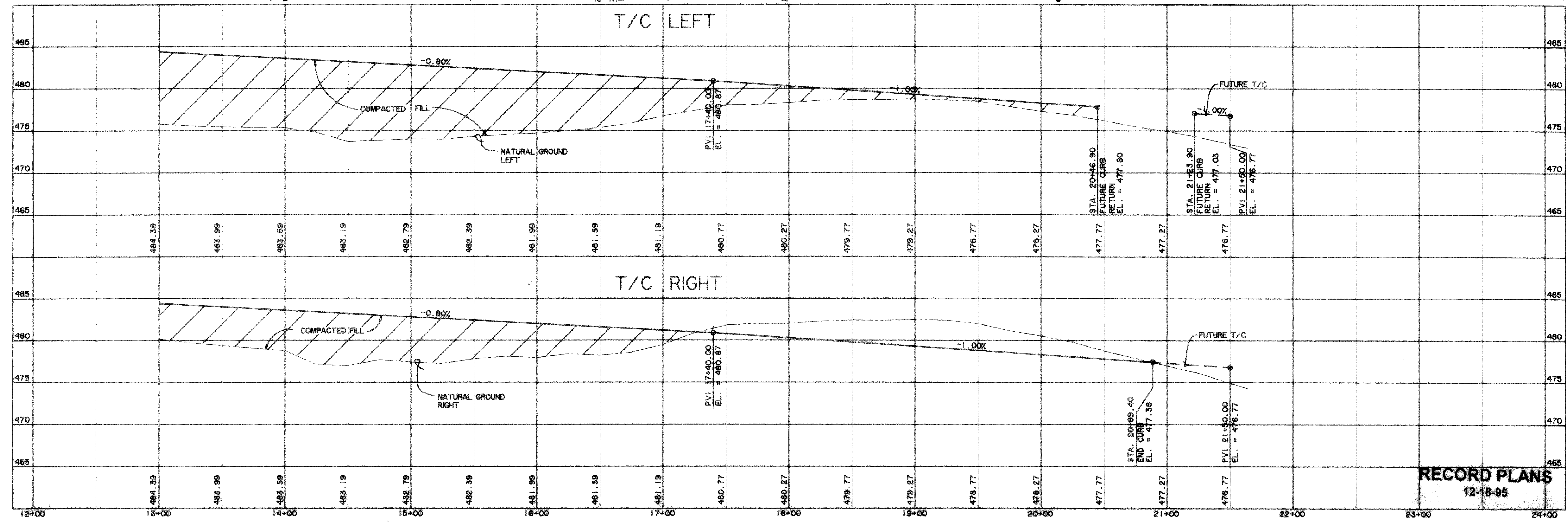
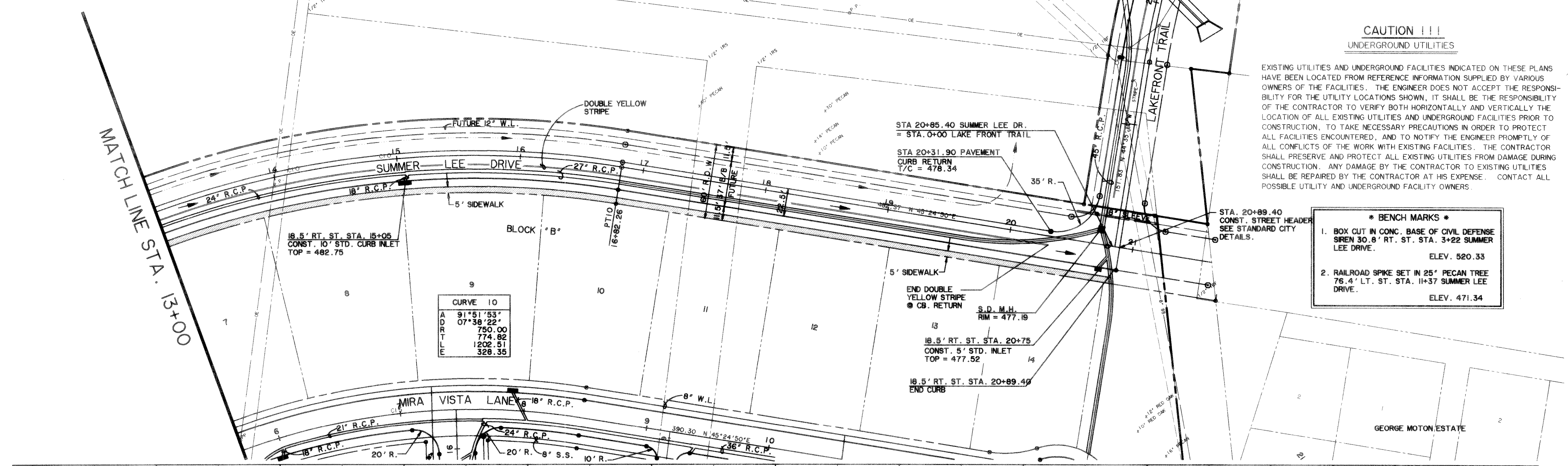


**CAUTION !!!**  
UNDERGROUND UTILITIES

EXISTING UTILITIES AND UNDERGROUND FACILITIES INDICATED ON THESE PLANS HAVE BEEN LOCATED FROM REFERENCE INFORMATION SUPPLIED BY VARIOUS OWNERS OF THE FACILITIES. THE ENGINEER DOES NOT ACCEPT THE RESPONSIBILITY FOR THE UTILITY LOCATIONS SHOWN, IT SHALL BE THE RESPONSIBILITY OF THE CONTRACTOR TO VERIFY BOTH HORIZONTALLY AND VERTICALLY THE LOCATION OF ALL EXISTING UTILITIES AND UNDERGROUND FACILITIES PRIOR TO CONSTRUCTION. TO TAKE NECESSARY PRECAUTIONS IN ORDER TO PROTECT ALL FACILITIES ENCOUNTERED, AND TO NOTIFY THE ENGINEER PROMPTLY OF ALL CONFLICTS OF THE WORK WITH EXISTING FACILITIES. THE CONTRACTOR SHALL PRESERVE AND PROTECT ALL EXISTING UTILITIES FROM DAMAGE DURING CONSTRUCTION. ANY DAMAGE BY THE CONTRACTOR TO EXISTING UTILITIES SHALL BE REPAIRED BY THE CONTRACTOR AT HIS EXPENSE. CONTACT ALL POSSIBLE UTILITY AND UNDERGROUND FACILITY OWNERS.

- \* BENCH MARKS \***
- BOX CUT IN CONC. BASE OF CIVIL DEFENSE SIREN 30.8' RT. ST. STA. 3+22 SUMMER LEE DRIVE. ELEV. 520.33
  - RAILROAD SPIKE SET IN 25' PECAN TREE 76.4' LT. ST. STA. 11+37 SUMMER LEE DRIVE. ELEV. 471.34

CURVE 10	
A	91°51'53"
D	07°38'22"
R	750.00
T	774.82
L	1202.51
E	328.35

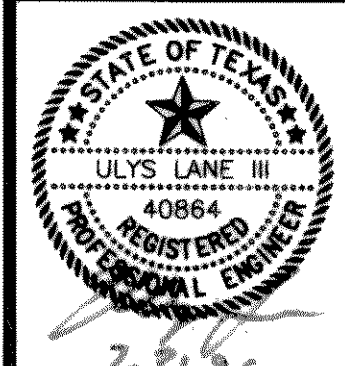


**RECORD PLANS**  
12-18-95

PREPARED BY:  
**WIER & ASSOCIATES, INC.**  
ENGINEERS SURVEYORS LAND PLANNERS  
4300 BELWAY PLACE SUITE 130 ARLINGTON TEXAS 76018 METRO (817) 467-7700  
3908 SOUTH FREEMAN FORT WORTH, TEXAS 76110 (817) 920-0212

**CITY OF ROCKWALL**  
**ROCKWALL COUNTY, TEXAS**

**SUMMER LEE DRIVE**  
**PLAN AND PROFILES**  
**STA. 12+00 TO STA. 20+89.40**



COPYRIGHT © WIER & ASSOCIATES, INC.  
LAST SHEET EDITED  
DATE 07-31-95  
FILE PAVED  
WA# 93049  
**SHEET NO.**  
8