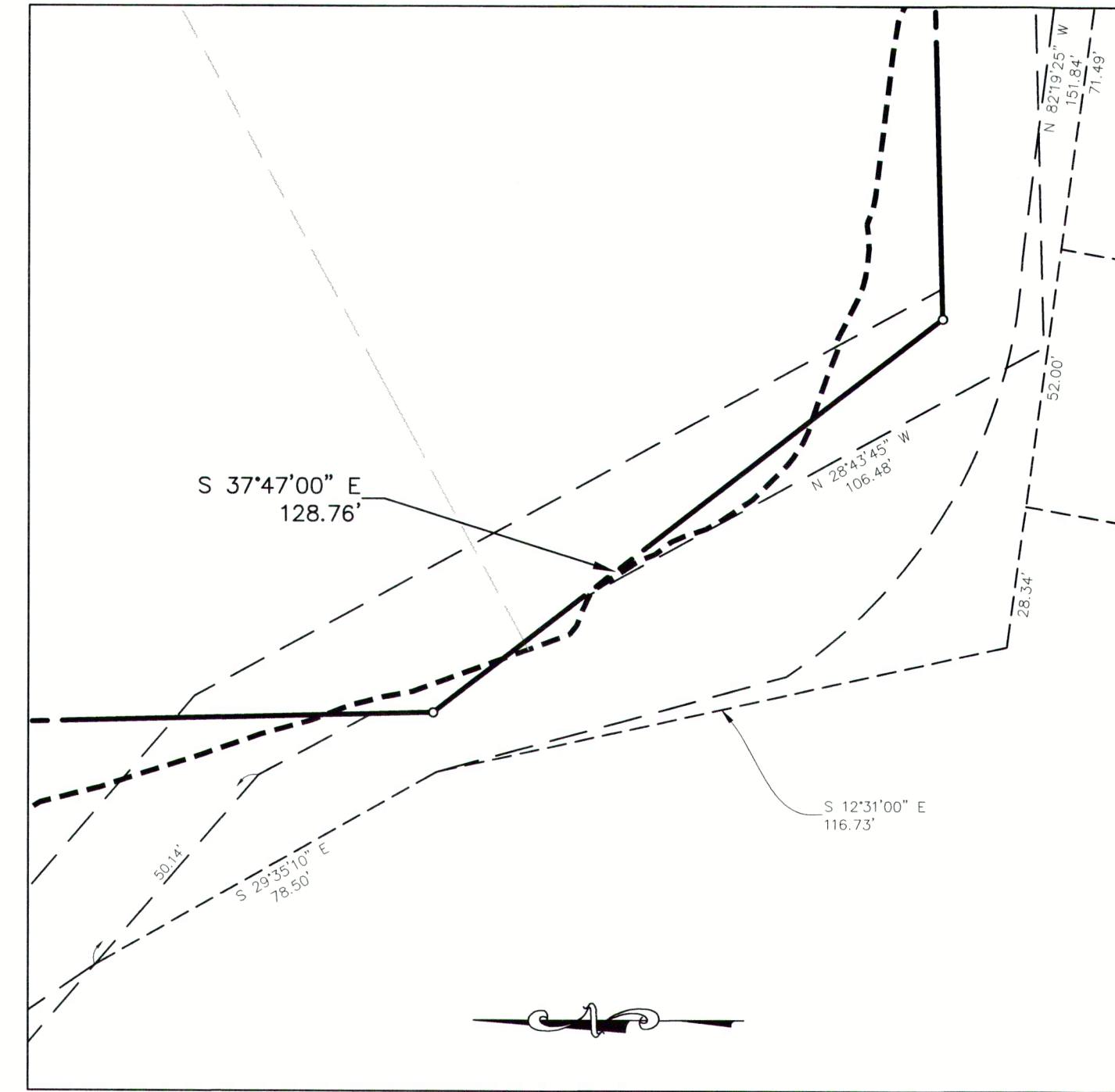


CURVE TABLE				
CURVE	RADIUS	DELTA ANGLE	ARC LENGTH	LONG CHORD
C1	586.00'	7°34'10"	77.42'	N 24°47'26" W, 77.36'
C2	314.00'	9°39'36"	52.94'	S 25°50'09" E, 52.88'
C3	30.00'	164°03'56"	85.90'	S 08°32'01" E, 59.42'
C4	135.00'	69°12'17"	163.06'	S 38°53'48" W, 153.33'
C5	47.50'	172°31'21"	143.03'	N 89°26'40" W, 94.80'
C6	45.00'	77°38'09"	60.97'	N 41°43'04" E, 56.42'
C7	50.00'	61°09'50"	53.38'	S 51°47'05" E, 50.88'
C8	50.00'	19°05'33"	16.66'	S 11°39'24" E, 16.58'
C9	100.00'	59°20'39"	103.58'	N 31°46'57" W, 99.01'
C10	150.00'	39°00'32"	102.12'	S 41°57'01" E, 100.16'
C11	150.00'	19°09'59"	50.18'	S 12°51'45" E, 49.94'
C12	25.00'	90°35'45"	39.53'	S 42°01'07" W, 35.54'
C13	25.00'	80°31'00"	35.13'	N 52°25'30" W, 32.31'
C14	15.00'	73°37'51"	19.28'	N 54°52'45" W, 17.98'
C15	50.00'	17°02'00"	14.86'	N 74°31'15" W, 14.81'
C16	20.00'	137°10'12"	47.88'	N 02°34'51" E, 37.24'
C17	100.00'	32°19'27"	56.42'	S 55°00'14" W, 55.67'
C18	31.00'	108°46'23"	58.85'	S 69°01'49" E, 50.40'
C19	15.00'	52°12'27"	13.67'	S 11°27'36" W, 13.20'
C20	150.00'	19°40'20"	51.50'	N 27°43'40" E, 51.25'
C21	30.00'	79°04'15"	41.40'	S 57°25'37" W, 38.19'
C22	100.00'	23°55'23"	41.75'	S 10°16'01" W, 41.45'
C23	200.00'	19°01'01"	66.38'	S 78°47'50" W, 66.08'
C24	200.00'	19°01'01"	66.38'	N 78°47'50" E, 66.08'
C25	35.50'	61°01'45"	37.81'	S 61°10'48" E, 36.05'
C26	1879.50'	4°26'24"	145.64'	S 28°26'43" E, 145.61'
C27	500.00'	28°07'41"	245.46'	S 12°09'41" E, 243.01'
C28	200.00'	16°58'40"	59.26'	S 06°35'10" E, 59.05'

CURVE TABLE				
CURVE	RADIUS	DELTA ANGLE	ARC LENGTH	LONG CHORD
C29	200.00'	19°31'14"	68.14'	N 24°50'07" W, 67.81'
C30	500.00'	28°20'27"	247.32'	S 20°25'30" E, 244.81'
C31	1879.50'	1°36'03"	52.51'	S 05°27'15" E, 52.51'
C32	35.00'	94°39'14"	57.82'	S 42°40'23" W, 51.47'
C33	200.00'	23°36'06"	82.38'	N 78°11'57" W, 81.80'
C34	250.00'	23°36'06"	102.98'	S 78°11'57" E, 102.25'
C35	239.50'	25°36'32"	107.05'	S 79°12'10" E, 106.16'
C36	350.00'	10°27'46"	63.91'	N 84°46'07" W, 63.82'
C37	350.00'	10°27'46"	63.91'	S 84°46'07" E, 63.82'
C38	35.50'	78°20'50"	48.54'	N 50°49'35" W, 44.85'
C39	200.00'	26°20'30"	91.95'	S 24°49'25" E, 91.14'
C40	200.00'	73°03'00"	254.99'	N 01°28'10" W, 238.07'
C41	514.50'	6°07'37"	55.02'	N 38°07'09" E, 54.99'
C42	200.00'	41°54'09"	146.27'	N 62°08'02" E, 143.03'
C43	300.00'	4°45'57"	24.95'	N 04°04'39" W, 24.95'
C44	300.00'	12°13'03"	63.97'	S 00°21'06" E, 63.85'
C45	500.00'	12°40'20"	110.59'	N 00°34'44" W, 110.36'
C46	500.00'	6°06'27"	53.30'	N 09°58'07" W, 53.27'
C47	500.00'	11°53'17"	103.74'	S 07°04'43" E, 103.56'
C48	300.00'	24°01'25"	125.79'	N 13°08'47" W, 124.87'
C49	1000.00'	4°55'30"	85.96'	S 22°41'45" E, 85.93'
C50	1000.00'	15°41'26"	273.85'	S 12°23'17" E, 273.00'
C51	200.00'	4°32'34"	15.86'	S 02°16'17" E, 15.85'
C52	200.00'	5°09'30"	18.01'	N 72°20'45" E, 18.00'
C53	24.50'	37°29'59"	16.04'	S 20°26'39" E, 15.75'
C54	24.50'	39°28'25"	16.88'	N 18°02'33" E, 16.55'

LINE TABLE			LINE TABLE			LINE TABLE			LINE TABLE		
LINE	BEARING	DISTANCE	LINE	BEARING	DISTANCE	LINE	BEARING	DISTANCE	LINE	BEARING	DISTANCE
L1	S 05°14'42" E	119.42'	L23	S 66°45'40" E	23.94'	L45	S 88°18'20" W	262.85'	L67	N 69°46'00" E	10.99'
L2	N 84°45'18" E	20.00'	L24	S 82°22'00" E	49.46'	L46	S 88°18'20" W	114.67'	L68	S 57°15'50" E	8.84'
L3	S 30°39'57" E	32.25'	L25	S 21°12'10" E	55.37'	L47	S 88°18'20" W	236.64'	L69	N 79°45'20" W	24.17'
L4	S 28°49'11" W	80.93'	L26	S 22°26'45" E	50.84'	L48	S 87°14'00" E	51.43'	L70	N 59°37'10" E	37.50'
L5	N 30°39'57" W	19.44'	L27	N 52°16'25" W	40.00'	L49	S 88°18'20" W	89.61'	L71	N 59°37'10" E	37.42'
L6	S 59°20'03" W	21.30'	L28	N 10°00'00" E	52.75'	L50	N 30°39'55" W	72.41'	L72	N 02°20'15" W	115.92'
L7	N 84°45'18" E	20.00'	L29	N 83°02'15" W	23.90'	L51	N 15°04'30" W	20.00'	L73	N 02°20'15" W	117.56'
L8	N 05°14'42" W	136.88'	L30	N 38°50'30" E	35.47'	L52	N 15°04'30" W	20.00'	L74	S 42°49'10" E	80.16'
L9	N 89°26'01" E	15.52'	L31	N 43°17'40" E	103.29'	L53	N 90°00'00" E	32.61'	L75	S 42°49'10" E	86.72'
L10	S 84°45'30" W	44.16'	L32	N 38°46'40" E	41.89'	L54	N 90°00'00" E	45.27'	L76	S 84°45'18" W	37.58'
L11	S 13°33'50" W	104.66'	L33	N 56°35'00" E	32.01'	L55	N 90°00'00" E	62.99'	L77	N 84°45'18" E	20.70'
L12	S 13°33'50" W	122.24'	L34	S 37°33'50" W	80.00'	L56	N 81°52'00" W	50.52'	L78	N 28°43'45" W	25.65'
L13	S 84°45'30" W	58.48'	L35	S 17°53'30" W	81.24'	L57	N 85°35'40" E	50.16'	L79	S 59°20'05" W	22.00'
L14	N 80°32'08" E	59.21'	L36	N 83°02'15" W	18.50'	L58	N 90°00'00" E	49.86'	L80	N 30°39'55" W	10.00'
L15	N 89°26'01" E	100.40'	L37	S 10°00'00" W	53.40'	L59	N 90°00'00" E	26.24'	L81	S 59°20'05" W	21.95'
L16	S 00°57'10" W	37.69'	L38	S 00°49'43" E	5.95'	L60	S 11°39'10" E	129.43'	L82	S 74°57'21" E	69.13'
L17	S 43°18'20" W	36.30'	L39	N 88°18'20" E	20.00'	L61	S 37°59'40" E	64.63'	L83	S 52°07'59" E	31.31'
L18	S 59°37'10" W	12.24'	L40	S 00°49'43" E	25.65'	L62	S 83°05'06" W	58.72'	L84	S 28°38'05" E	104.56'
L19	S 00°57'10" W	42.23'	L41	N 01°41'40" W	161.58'	L63	S 01°41'40" E	32.68'	L85	S 67°46'17" E	29.00'
L20	S 43°18'20" W	13.20'	L42	S 01°41'40" E	14.97'	L64	S 00°00'00" E	16.98'	L86	S 01°41'40" E	29.00'
L21	S 01°41'41" E	25.00'	L43	S 88°18'20" W	44.70'	L65	N 74°55'30" E	116.59'	L87	N 59°37'10" E	37.50'
L22	S 01°41'41" E	30.00'	L44	S 88°18'20" W	10.39'	L66	N 74°55'30" E	207.70'			



DETAIL "A"  
Scale: 1"=30'

**FINAL PLAT**  
**Lot 1, Block A & Lot 1, Block B**  
**LADERA ROCKWALL**  
**47.694 Acres**  
**Zoned: PD-85**  
 in the  
**M. JONES SURVEY, ABSTRACT NO. 122**  
**CITY OF ROCKWALL**  
**ROCKWALL COUNTY, TEXAS**

2/4



The John R. McAdams  
 Company, Inc.  
 (DBA, G&A | McAdams)  
 111 Hillside Drive  
 Lewisville, Texas 75057  
 972.436.9712  
 201 Country View Drive  
 Roanoke, Texas 76262  
 940.240.1012  
 TBPE: 19762 TBPLS: 10194440  
 www.gacon.com  
 www.mcadamsco.com

DRAWN BY: CC DATE: 6/27/2019 SCALE: 1"=100' JOB. No. 17191

**OWNER/DEVELOPER**  
**RW LADERA, LLC.**  
**361 W. BYRON NELSON**  
**BLVD. STE. 104**  
**ROANOKE, TX 76262**  
**Ph. 817.430.3318**  
**Contact: John Dellin**

Case No. P2019-010

File: Z:\2017\17191\Drawings\17191-FP-BASE  
 Plotted: 7/16/2019 11:05 AM by Cole Carpenter. Saved: 6/28/2019 11:18 PM by cole

