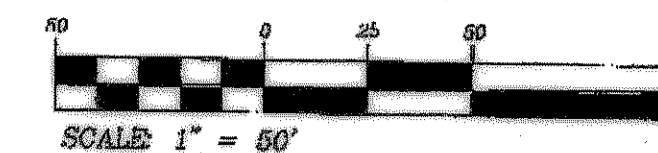
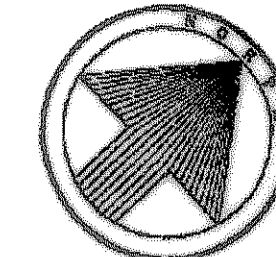


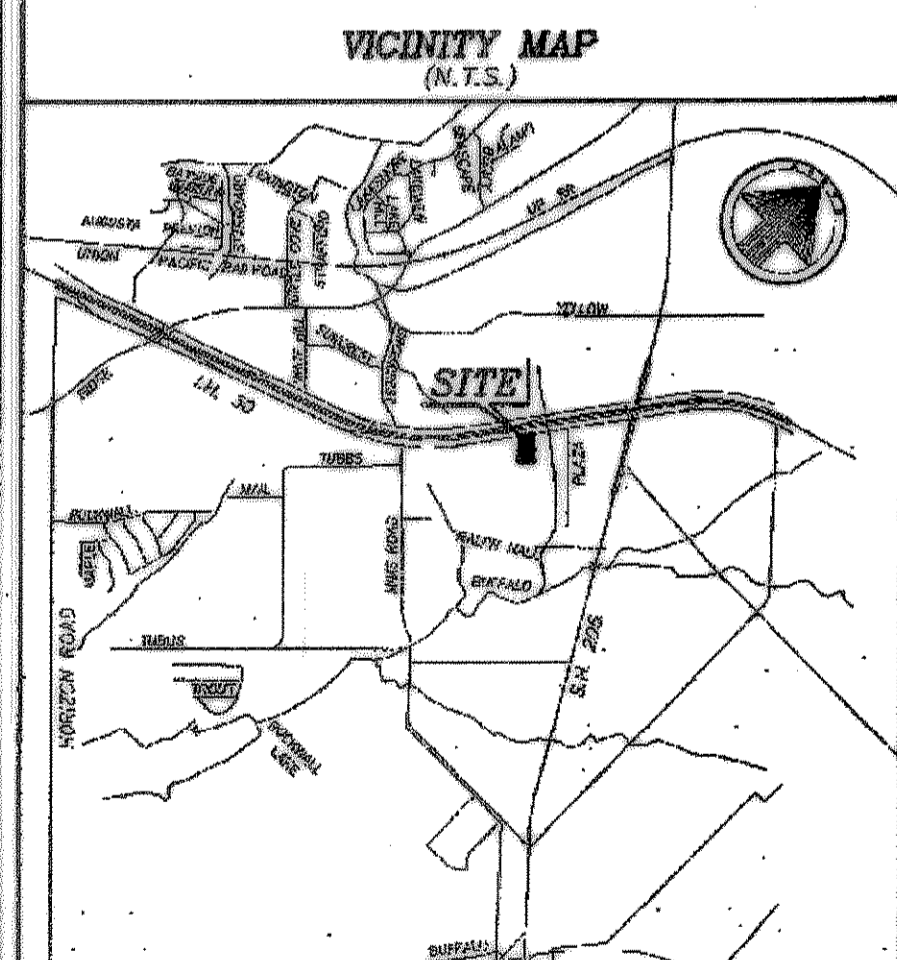
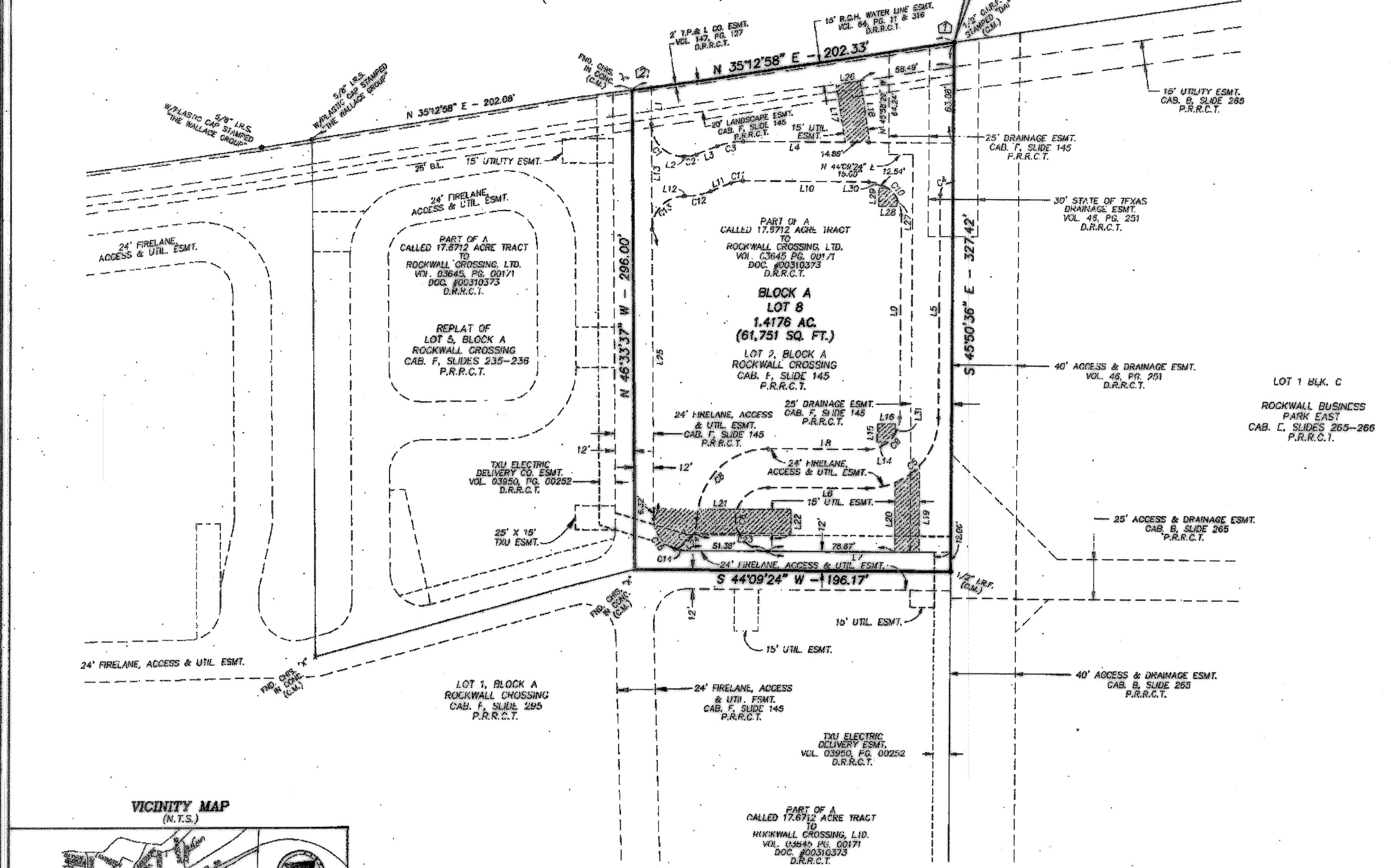
INTERSTATE HIGHWAY 30
(VARIABLE WIDTH R.O.W.)

POINT OF BEGINNING



CURVE	LENGTH	RADIUS	DELTA	CD	CB
C1	31.12'	20.00'	90°00'00"	20.28'	N 88°26'23" E
C2	7.38'	20.00'	212°04'00"	7.43'	N 88°26'23" E
C3	16.45'	44.00'	212°04'00"	16.36'	N 33°26'32" E
C4	12.28'	7.00'	63°49'45"	10.90'	S 01°04'00" W
C5	69.12'	44.00'	90°00'00"	62.23'	S 00°00'00" E
C6	62.83'	20.00'	180°00'00"	60.00'	S 45°00'00" E
C7	25.00'	20.00'	71°35'36"	23.40'	N 10°31'17" W
C8	64.12'	44.00'	90°00'00"	62.23'	N 00°00'00" W
C9	31.42'	20.00'	90°00'00"	28.28'	N 00°00'00" W
C10	31.42'	20.00'	90°00'00"	28.28'	S 89°00'00" W
C11	7.48'	20.00'	212°04'00"	7.43'	S 33°26'32" W
C12	16.16'	44.00'	212°04'00"	15.98'	S 01°04'00" W
C13	31.42'	20.00'	90°00'00"	28.28'	S 01°04'00" W
C14	6.42'	20.00'	162°32'22"	6.30'	S 52°10'00" W
C15	24.74'	20.00'	70°52'48"	23.10'	S 62°00'00" E

LINE	LENGTH	BEARING
L1	23.29'	S 46°33'37" E
L2	0.92'	N 43°26'23" E
L3	13.92'	N 22°44'20" E
L4	130.10'	N 44°09'24" E
L5	135.64'	S 45°00'00" E
L6	61.18'	S 44°09'24" W
L7	113.18'	S 44°09'24" W
L8	61.18'	N 44°09'24" E
L9	124.34'	N 45°00'00" W
L10	78.12'	S 44°09'24" W
L11	13.92'	S 22°44'20" W
L12	0.92'	S 43°26'23" W
L13	64.90'	N 46°33'37" W
L14	6.72'	S 44°09'24" W
L15	11.00'	N 45°00'00" W
L16	11.00'	N 44°09'24" E
L17	36.93'	N 54°46'58" W
L18	36.29'	S 64°46'58" E
L19	64.33'	S 45°00'00" E
L20	43.63'	N 45°00'00" W
L21	26.00'	N 44°09'24" E
L22	15.00'	S 46°30'58" E
L23	60.57'	S 44°09'24" W
L24	14.75'	S 00°42'06" E
L25	128.04'	N 46°33'37" E
L26	16.00'	N 01°23'00" E
L27	4.75'	S 45°00'00" E
L28	11.00'	S 44°09'24" W
L29	11.00'	N 45°00'00" W
L30	5.38'	N 44°09'24" E
L31	5.02'	S 45°00'00" E



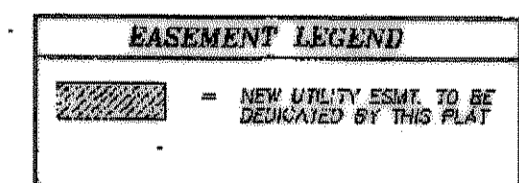
COORDINATES ARE BASED ON THE CITY OF ROCKWALL MONUMENTATION SYSTEM

	NORTHING	EASTING
①	7,018,984.62	2,596,765.28
②	7,018,819.32	2,596,868.60

- NOTES:
- 1) THE SURVEYOR DID NOT ABSTRACT THE SUBJECT TRACT.
 - 2) THE SURVEYOR DOES NOT GUARANTEE THAT ALL EASEMENTS, RIGHTS, OR OTHER ENCUMBRANCES WHICH MAY AFFECT THE SUBJECT TRACT ARE SHOWN HEREON.
 - 3) I.R.F. = IRON ROD FOUND
I.R.S. = IRON ROD SET
C.M. = CONTROL MONUMENT
C.I.R.F. = 5/8" I.R.F. W/ YELLOW PLASTIC CAP
STAMPED "THE WALLACE GROUP"
D.R.R.C.I. = DEED RECORDS, ROCKWALL COUNTY, TEXAS
P.R.R.C.I. = PLAT RECORDS, ROCKWALL COUNTY, TEXAS

OWNER: ROCKWALL CROSSING, LTD.
2100 W. 7TH STREET
FORT WORTH, TEXAS 76107
PH. (817) 732-4000

SURVEYOR: THE WALLACE GROUP, INC.
ENGINEERS • PLANNERS • SURVEYORS
1825 MARKET CENTER BLDG., SUITE 210
DALLAS, TEXAS 75207-3350
(214-747-5753) (FAX 214-747-7831)



G 19
00361907
FILED FOR RECORD
ROCKWALL CO., TEXAS
06 SEP -5 PM 12:12
VALETTE BUNKS
CO. CLERK
BY: _____ DEPUTY

**LOT 8, BLOCK A
BEING A REPLAT OF
LOT 2, BLOCK A
ROCKWALL CROSSING**
1 LOT, 1.4176 ACRES
J.D. McFARLAND SURVEY, ABSTRACT NO. 145
CITY OF ROCKWALL
ROCKWALL COUNTY, TEXAS