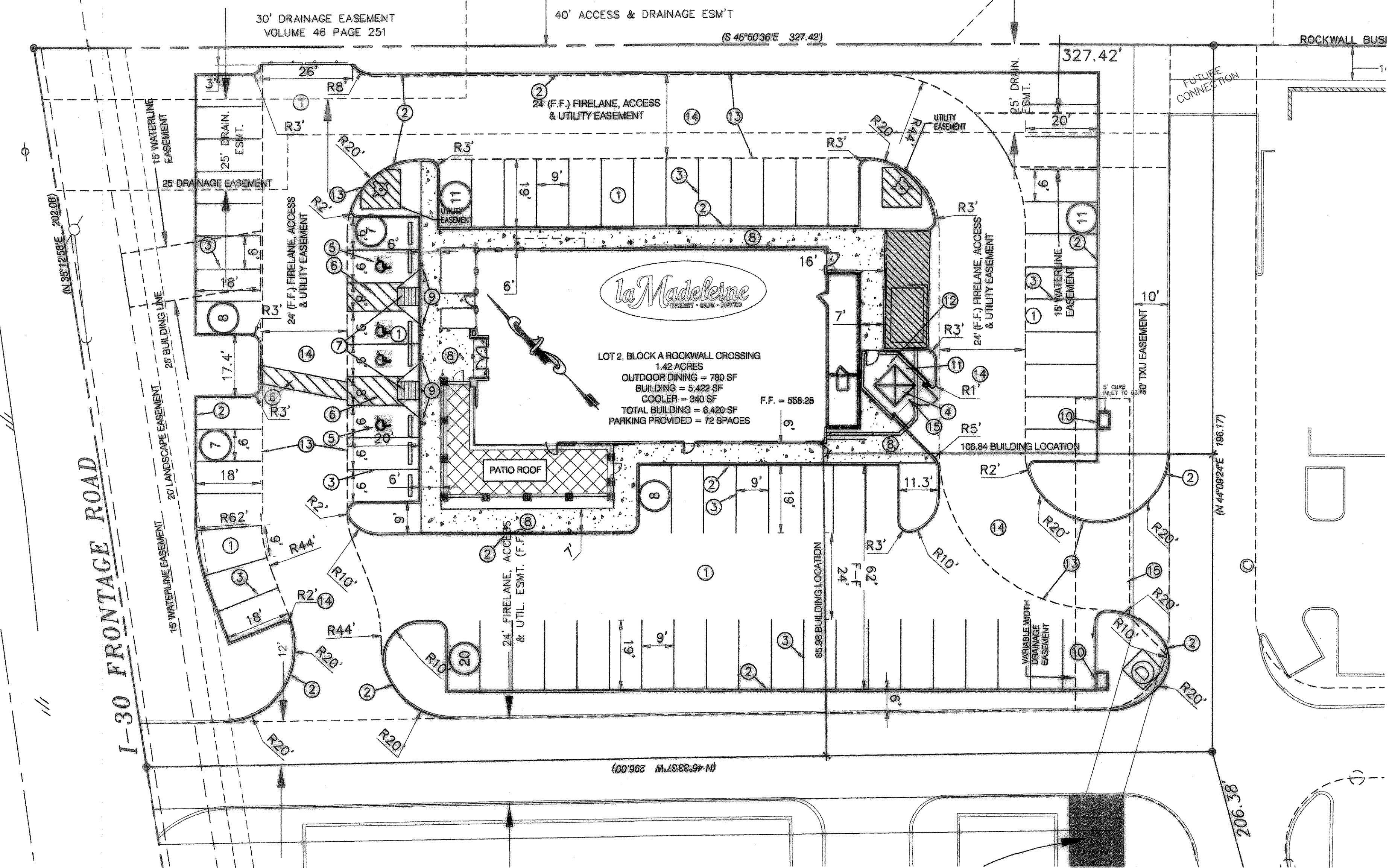


(ASPHALT PAVING)  
2-5'x3' BOX CULVERT  
FL = 553.76

I-30 FRONTAGE ROAD

ROCKWALL BUS



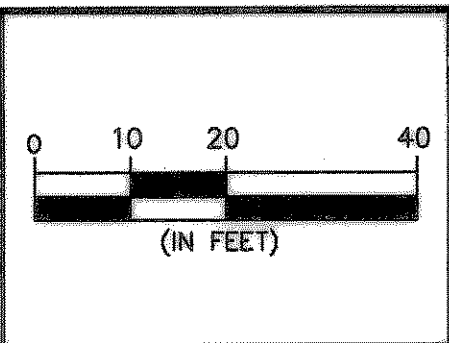
**SITE CALLS**

- ① CONSTRUCT 5" THICK 3,000 PSI REINFORCED CONCRETE PAVEMENT PER GEOTECHNICAL REPORT AND DETAILS.
- ② CONSTRUCT 6" INTEGRAL CONCRETE CURB PER DETAIL.
- ③ PAINT 4" WHITE PARKING STRIPE PER SPECS.
- ④ CONSTRUCT DUMPSTER ENCLOSURE PER ARCHITECTURAL DETAILS.
- ⑤ PAINT WHITE ACCESSIBLE PARKING SYMBOL PER DETAIL. SEE DETAIL SHEET C6.0
- ⑥ PAINT 4" YELLOW ACCESSIBLE PARKING AISLE STRIPES PER DETAIL. SEE DETAIL SHEET C6.0.
- ⑦ CONSTRUCT CONCRETE ACCESSIBLE RAMP PER DETAIL. SEE DETAIL SHEET C6.0.
- ⑧ CONSTRUCT CONCRETE SIDEWALK PER DETAIL. SEE DETAIL SHEET C6.0.
- ⑨ INSTALL ACCESSIBLE PARKING SIGN PER DETAIL. SEE DETAIL SHEET C6.0.
- ⑩ CONSTRUCT 5' CURB INLET PER GRADING PLAN.
- ⑪ CONSTRUCT 8" THICK 3,600 PSI REINFORCED CONCRETE PAVEMENT (CONCRETE FOR DUMPSTER PAD ONLY), PER GEOTECHNICAL REPORT AND DETAILS.
- ⑫ INSTALL CONCRETE BOLLARDS PER DETAIL.
- ⑬ PAINT 4" RED FIRE LANE PER DETAIL.
- ⑭ CONSTRUCT 6" 3,600 PSI REINFORCED CONCRETE PAVEMENT, 6-SACK MIN. FOR MACHINE POUR AND 6.5-SACK MIN. FOR HAND POUR.
- ⑮ CONSTRUCT SLOTTED DRAIN (PRIVATE). SEE GRADING PLAN.
- ⑯ ALL DIMENSIONS ARE FROM FACE OF CURB TO FACE OF CURB.

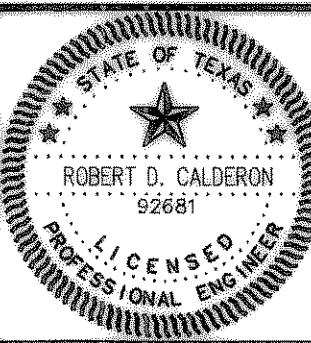
**RECORD DRAWING**

THESE PLANS HAVE BEEN REVISED TO REFLECT FIELD CHANGES AS INDICATED BY CONSTRUCTION RECORDS.  
DATE 11-16-06

REV	DATE	BY	DESCRIPTION



DESIGNED: DPS  
DRAWN: RS  
CHECKED: DPS



"THE SEAL APPEARING ON THIS DOCUMENT WAS AUTHORIZED BY ROBERT D. CALDERON ON THE DATE SHOWN ON THE DAYSTAMP. ALTERATION OF A SEALED DOCUMENT WITHOUT PROPER NOTIFICATION TO THE RESPONSIBLE ENGINEER IS AN OFFENSE UNDER THE TEXAS ENGINEERING PRACTICE ACT."  
DATE 11-16-06 NAME RDC

ENGINEERS ARCHITECTS SURVEYORS PLANNERS  
**THE WALLACE GROUP INC.**

LA MADELEINE RESTAURANT  
ROCKWALL CROSSING  
**SITE & DIMENSION CONTROL PLAN**

SHEET  
C3.0  
OF 15 SHEETS

© Project: 0815-WOODMONT LA MADELEINE (From Austin) 11-15-05; 0815-SP, 11/15/2005 3:46:29 PM, TDD SYSTEMS