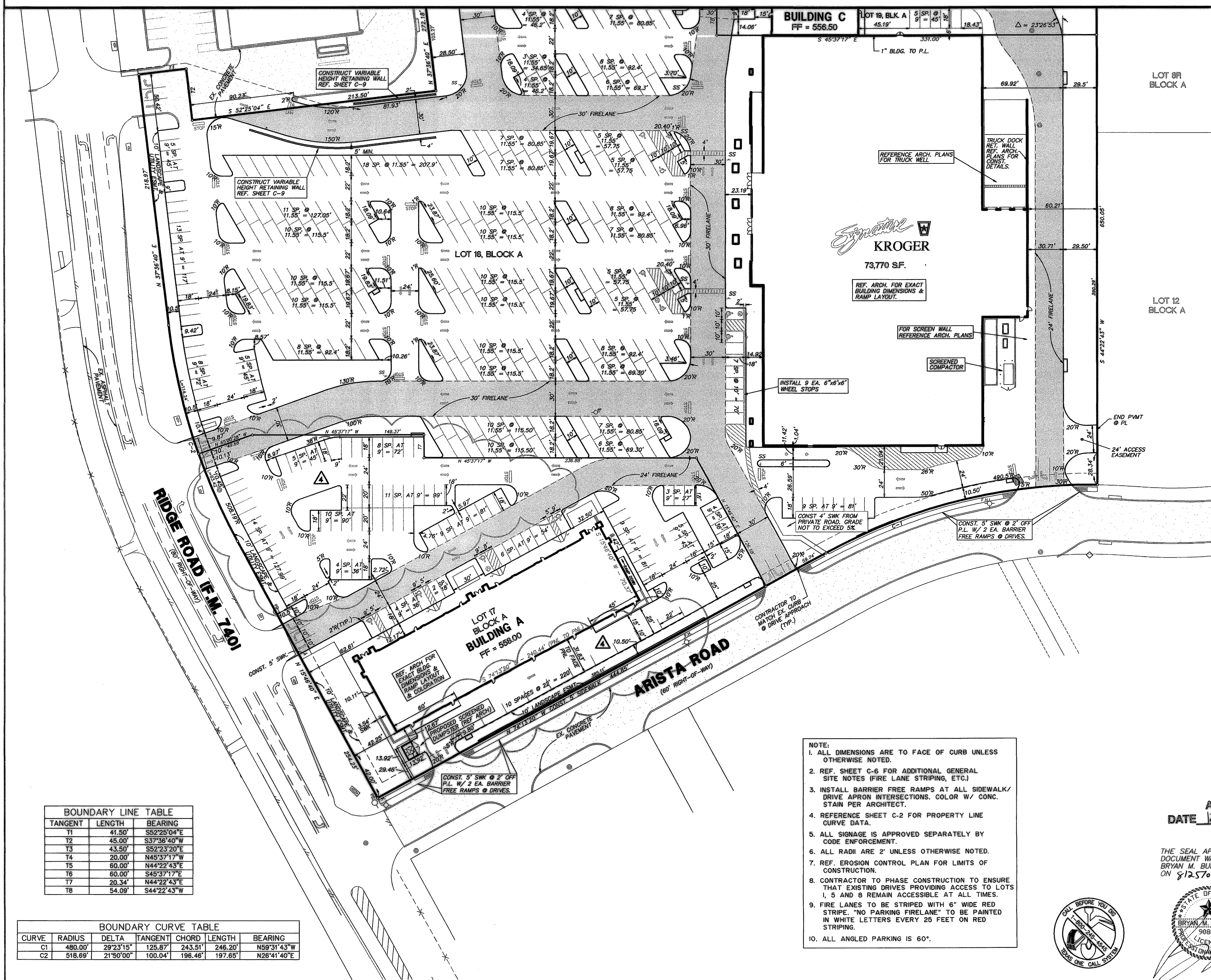
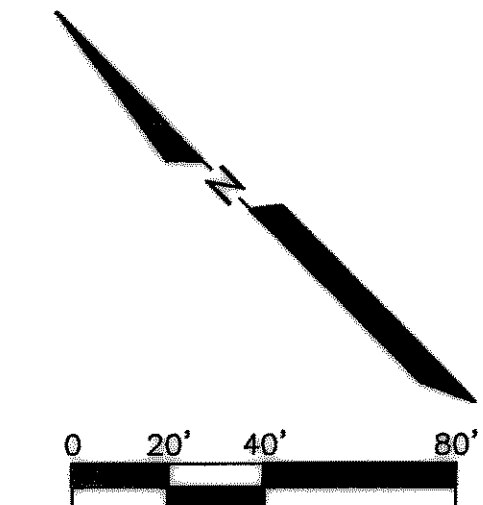
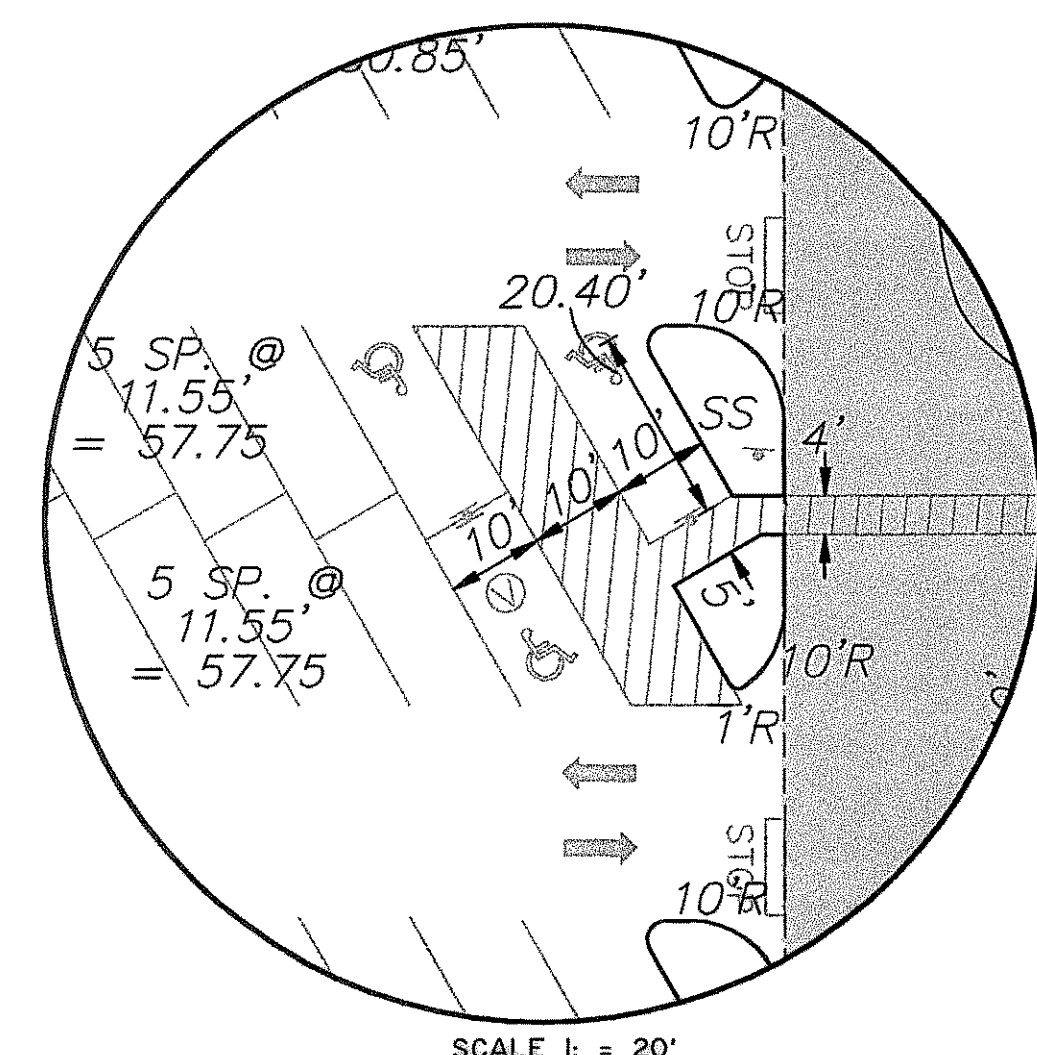


MATCH LINE SEE SHEET C-4



- LEGEND**
- F.H. FIRE HYDRANT
  - X SET CHISELED "X" SET
  - X FOUND CHISELED "X" FOUND
  - I.R. IRON ROD FOUND (SIZE AS NOTED)
  - I.R.S. IRON ROD SET (SIZE AS NOTED)
  - O.U.P. OVERHEAD UTILITY POLE W/ GUY
  - U.E. UNDERGROUND ELECTRIC OR TELEPHONE
  - L.P. LIGHT POLE (EX)
  - S.M. SANITARY SEWER MANHOLE (EX)
  - S.S. SAN. SWR. CLEAN OUT (EX)
  - G.V. GAS VALVE (EX)
  - W.V. WATER VALVE (EX)
  - T. TREE
  - P.C.G.I. PROP. COMBINATION GRATE INLET
  - P.D.I. PROP. DROP INLET
  - C.I. PROP. CURB INLET
  - P.S. PROP. SIGNAGE (H.C.)
  - S.S. PROP. STOP SIGN
  - P.H.S. PAINTED HANDICAP SYMBOL
  - P.A.S. PAINTED STRIPING @ ACCESS ROUTES
  - F.L. FIRE LANE
  - V.A. VAN ACCESSIBLE



HANDICAP PARKING DETAIL AT KROGER

**BENCH MARK:**  
BOX CUT IN NW CURB RETURN AT THE INTERSECTION OF WESTWOOD AND ROCKWALL PARKWAY.  
ELEVATION = 537.56

**BOUNDARY LINE TABLE**

TANGENT	LENGTH	BEARING
T1	41.50'	S52°25'04"E
T2	45.00'	S37°36'40"W
T3	43.50'	S52°23'20"E
T4	20.00'	N45°37'17"W
T5	60.00'	N44°22'43"E
T6	60.00'	S45°37'17"E
T7	20.34'	N44°22'43"E
T8	54.09'	S44°22'43"W

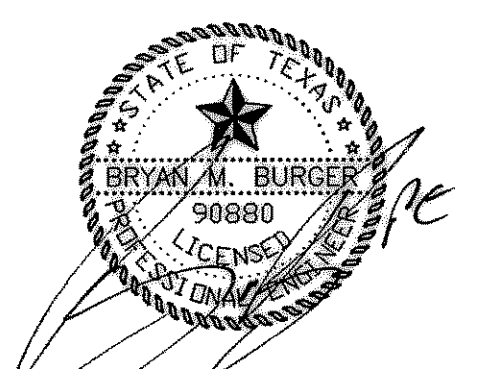
**BOUNDARY CURVE TABLE**

CURVE	RADIUS	DELTA	TANGENT	CHORD	LENGTH	BEARING
C1	480.00'	29°23'15"	125.87'	243.51'	246.20'	N59°31'43"W
C2	518.69'	21°50'00"	100.04'	196.46'	197.65'	N26°41'40"E

- NOTE:**
- ALL DIMENSIONS ARE TO FACE OF CURB UNLESS OTHERWISE NOTED.
  - REF. SHEET C-6 FOR ADDITIONAL GENERAL SITE NOTES (FIRE LANE STRIPING, ETC.)
  - INSTALL BARRIER FREE RAMPS AT ALL SIDEWALK/ DRIVE APRON INTERSECTIONS. COLOR W/ CONC. STAIN PER ARCHITECT.
  - REFERENCE SHEET C-2 FOR PROPERTY LINE CURVE DATA.
  - ALL SIGNAGE IS APPROVED SEPARATELY BY CODE ENFORCEMENT.
  - ALL RADII ARE 2' UNLESS OTHERWISE NOTED.
  - REF. EROSION CONTROL PLAN FOR LIMITS OF CONSTRUCTION.
  - CONTRACTOR TO PHASE CONSTRUCTION TO ENSURE THAT EXISTING DRIVES PROVIDING ACCESS TO LOTS 1, 5 AND 8 REMAIN ACCESSIBLE AT ALL TIMES.
  - FIRE LANES TO BE STRIPED WITH 6" WIDE RED STRIPE. "NO PARKING FIRELANE" TO BE PAINTED IN WHITE LETTERS EVERY 25 FEET ON RED STRIPING.
  - ALL ANGLED PARKING IS 60°.

AS BUILT  
DATE 12/14/05

THE SEAL APPEARING ON THIS DOCUMENT WAS AUTHORIZED BY BRYAN M. BURGER, P.E. 90880 ON 8/25/05



REV.	DATE	REMARKS
4	8-24-05	ADDED PARKING AT RETAIL A
3	5-20-05	REV. DIM. BLDG. A
2	5-02-05	ISSUED FOR CONSTRUCTION
1	3-22-05	ADDENDUM 1: REVISED PARKING DIMENSIONS & SIDEWALK WIDTH ALONG ARISTA

**DIMENSION CONTROL PLAN**  
LOTS 6, 17, 18 & 19, BLOCK A  
HORIZON RIDGE ADDITION  
THE CITY OF ROCKWALL, TEXAS  
LAWRENCE A. CATES & ASSOC., LLP CONSULTING ENGINEERS  
14800 QUORUM DRIVE, SUITE 200 (972) 388-2272 DALLAS, TEXAS

DESIGN	DRAWN	DATE	SCALE	NOTES	FILE	NO.
LAC	MCL	01-28-05	1" = 40'	D.P.	24104 DMCTL1	C-5