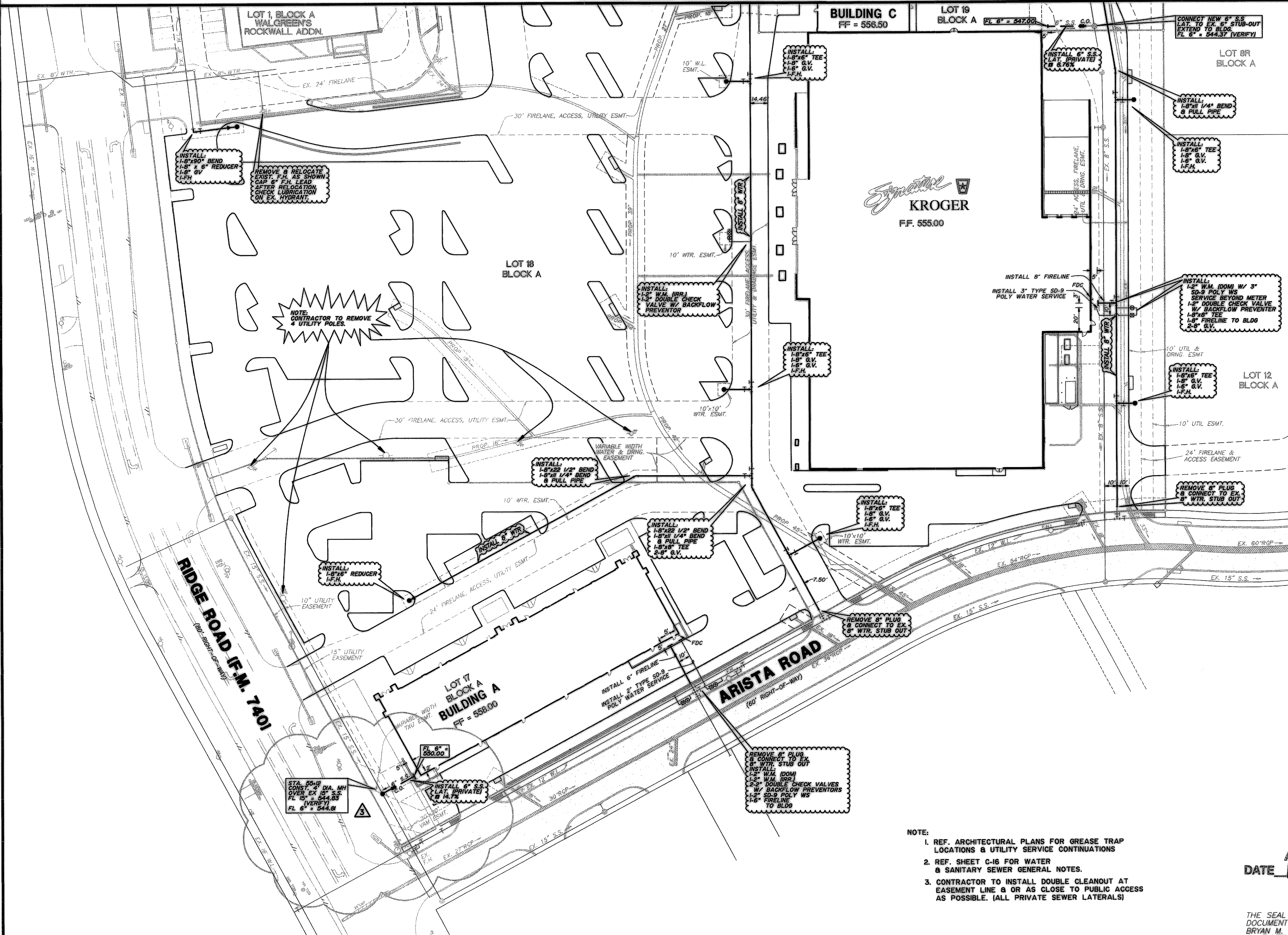
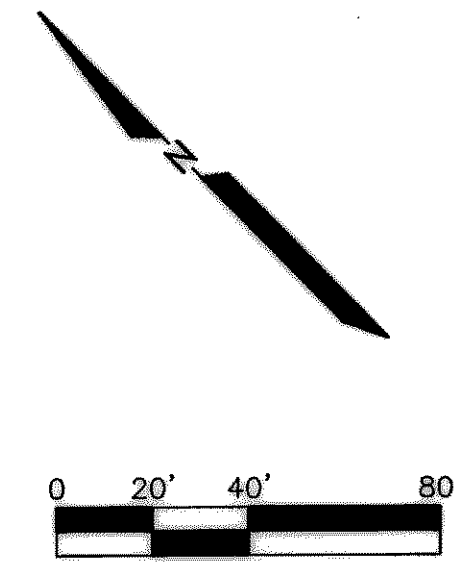


MATCH LINE SEE SHEET C-16



- LEGEND**
- F.H. FIRE HYDRANT
 - X SET CHISELED "X" SET
 - F.X. CHISELED "X" FOUND
 - F.I.R. IRON ROD FOUND (SIZE AS NOTED)
 - S.I.R. IRON ROD SET (SIZE AS NOTED)
 - O.U.P. OVERHEAD UTILITY POLE W/ GUY
 - U.E. UNDERGROUND ELECTRIC OR TELEPHONE
 - L.P. LIGHT POLE (EX)
 - S.M. SANITARY SEWER MANHOLE (EX)
 - C.O. SAN. SWR. CLEAN OUT (EX)
 - G.V. GAS VALVE (EX)
 - W.V. WATER VALVE (EX)
 - T TREE
 - PROP. COMBINATION GRATE INLET
 - PROP. DROP INLET
 - PROP. CURB INLET
 - PROP. SIGNAGE (H.C.)
 - PAINTED HANDICAP SYMBOL
 - PAINTED STRIPING @ ACCESS ROUTES
 - PROP. S.S. (BY OTHERS)
 - PROP. S.S.
 - PROP. WTR. (BY OTHERS)
 - PROP. WTR.
 - DOUBLE CLEANOUT
 - PROP. STM. SWR.
 - PROP. STM. SEWER (BY OTHERS)
 - ⊗ WATER METER
 - ⊠ BACKFLOW PREVENTER
 - G.V.
 - PROP. S.S. M.H.
 - PROP. FIRE HYDRANT
 - EXISTING STM. SEWER
 - EXISTING S.S.
 - EXISTING WTR.
 - C.O.
 - C.O. PROP. DOUBLE CLEAN OUT

NOTE: CONTRACTOR TO REMOVE 4 UTILITY POLES

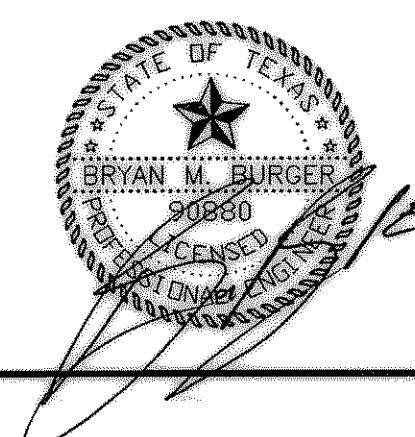
STA. 50+00
CONSTR. DIA. MH
OVER EX. S.S.
FL. 6' ± 544.88
FL. 6' ± 544.88

- NOTE:**
- REF. ARCHITECTURAL PLANS FOR GREASE TRAP LOCATIONS & UTILITY SERVICE CONTINUATIONS
 - REF. SHEET C-16 FOR WATER & SANITARY SEWER GENERAL NOTES.
 - CONTRACTOR TO INSTALL DOUBLE CLEANOUT AT EASEMENT LINE & OR AS CLOSE TO PUBLIC ACCESS AS POSSIBLE. (ALL PRIVATE SEWER LATERALS)

AS BUILT
DATE 12/14/05

BENCH MARK:
BOX CUT IN NW CURB RETURN AT THE INTERSECTION OF WESTWOOD AND ROCKWALL PARKWAY
ELEVATION = 537.56

THE SEAL APPEARING ON THIS DOCUMENT WAS AUTHORIZED BY BRYAN M. BURGER, P.E. 90880 ON 7/17/05



| | | |
|------|---------|--|
| 3 | 7-05-05 | MOVED 6" S.S. 3" |
| 2 | 5-02-05 | ISSUED FOR CONSTRUCTION |
| 1 | 3-22-05 | ADDENDUM NO. 1: ADDED FIRE HYDRANT & ADJUSTED HYDRANT LOCATIONS. |
| REV. | DATE | REMARKS |

WATER & SANITARY SEWER PLAN
 LOTS 6, 17, 18 & 19, BLOCK A
 HORIZON RIDGE ADDITION
 THE CITY OF ROCKWALL, TEXAS
 LAWRENCE A. CATES & ASSOC., LLP
 14800 QUORUM DRIVE, SUITE 200 (972) 385-2272
 CONSULTING ENGINEERS DALLAS, TEXAS

| DESIGN | DRAWN | DATE | SCALE | NOTES | FILE | NO. |
|--------|-------|----------|--------|-------|---------------|------|
| LAC | LAC | 01/28/05 | 1"=40' | D.P. | 24104 WATSEW1 | C-17 |