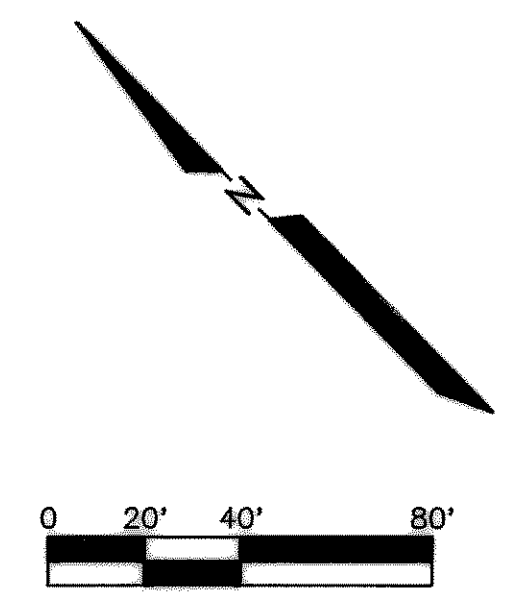
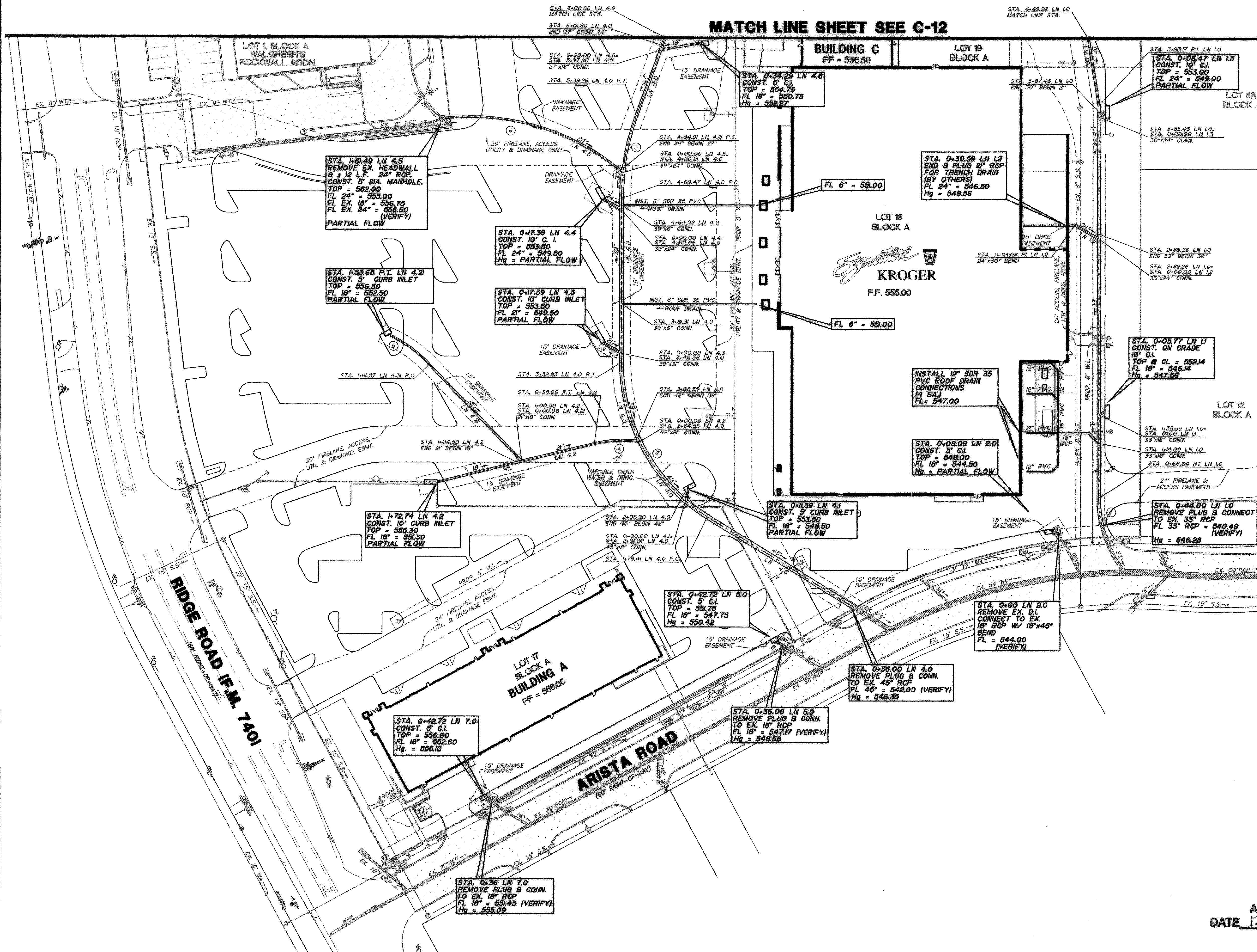


MATCH LINE SHEET SEE C-12



- LEGEND**
- F.H. FIRE HYDRANT
 - X SET CHISELED "X" SET
 - F.A.R. CHISELED "X" FOUND
 - I.R.F. IRON ROD FOUND (SIZE AS NOTED)
 - O.S.I.R. IRON ROD SET (SIZE AS NOTED)
 - O.V. OVERHEAD UTILITY POLE W/ GUY
 - U.P. UNDERGROUND ELECTRIC OR TELEPHONE
 - L.P. LIGHT POLE (EX)
 - S.S.M. SANITARY SEWER MANHOLE (EX)
 - S.C.O. SAN. SWR. CLEAN OUT (EX)
 - G.V. GAS VALVE (EX)
 - W.V. WATER VALVE (EX)
 - T. TREE
 - PROP. COMBINATION GRATE INLET
 - PROP. DROP INLET
 - PROP. CURB INLET
 - PROP. SIGNAGE (H.C.)
 - PAINTED HANDICAP SYMBOL
 - PAINTED STRIPING @ ACCESS ROUTES
 - D.E. DRAINAGE ESMT.
 - PROPOSED STORM SEWER
 - EXISTING STORM SEWER

NOTE: ALL PIPE TO BE CLASS III RCP UNLESS NOTED OTHERWISE.

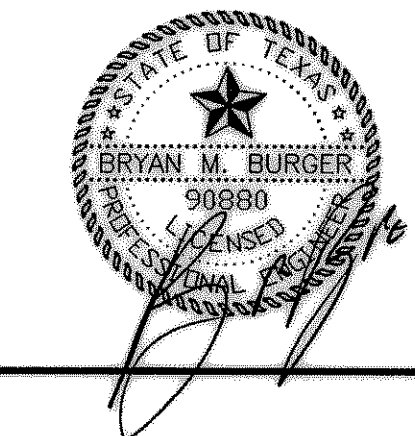
CENTERLINE STORM CURVE DATA

Station	Δ	R	L	C	T
1	12°58'15"	100.00'	22.64'	11.37'	
2	58°36'03"	150.00'	153.42'	146.82'	84.18'
3	20°00'00"	200.00'	69.81'	35.27'	
4	21°46'13"	100.00'	37.77'	19.23'	
5	24°35'39"	100.00'	42.92'	21.80'	

BENCH MARK:
BOX CUT IN NW CURB RETURN AT THE INTERSECTION OF WESTWOOD AND ROCKWALL PARKWAY. ELEVATION = 537.56

AS BUILT DATE 12/14/05

THE SEAL APPEARING ON THIS DOCUMENT WAS AUTHORIZED BY BRYAN M. BURGER, P.E. 90880 ON 4/12/05



REV.	DATE	REVISIONS
2	5-02-05	ISSUED FOR CONSTRUCTION
1	3-22-05	ADDENDUM NO. 1: REVISED 6" CURB INLETS TO 8" CURB INLETS & ADJUSTED FLOW LINES.

DRAINAGE PLAN
LOTS 6, 17, 18 & 19, BLOCK A
HORIZON RIDGE ADDITION
THE CITY OF ROCKWALL, TEXAS

DESIGN	DRAWN	DATE	SCALE	NOTES	FILE	NO.
LAC	LAC	01/28/05	1"=40'	D.P.	24104 DRAINAGE1	C-13

LAWRENCE A. CATES & ASSOC., LLP
14800 QUORUM DRIVE, SUITE 200 (972) 385-2272
CONSULTING ENGINEERS DALLAS, TEXAS