

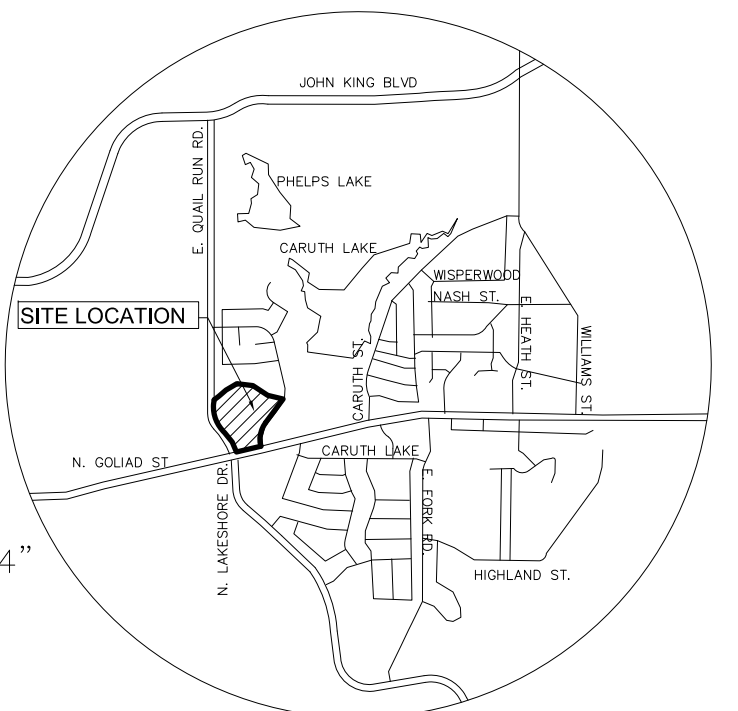
PIPE SIZES ARE LABELED AT TRANSITIONS ONLY

TROOT ROW INTENTIONALLY LEFT WITHOUT PERMANENT IRRIGATION. DO NOT TRENCH OR LOCATE HEADS ON STATE PROPERTY.

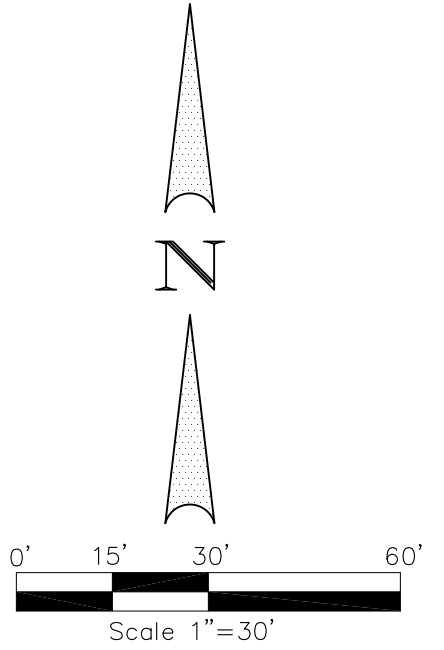
ALL DRIP ZONES INCLUDE CONTROL ZONE KIT: HUNTER ICZ-101-40 (TYP. ALL DRIP ZONES)
 HUNTER DRIPLINE PLD-04-18, 18" O.C. INSTALL AT GRADE BELOW MULCH. USE 1 STAPLE EVERY 5'. MAXIMUM LATERAL RUN FOR ANY ZONE 957' (TYP. ALL DRIP ZONES IN BEDS)
 PLDBV FLUSH VALVE (INSTALL AT THE END OF EACH RUN IN BOX. TYP. ALL DRIP ZONES)

TEMPORARY IRRIGATION WILL BE REQUIRED TO ESTABLISH TURF IN ALL DISTURBED AREAS WITHOUT A PERMANENT IRRIGATION SYSTEM. SOD ADJACENT TO HWY 174 AND ANY PARKING LOT ISLAND WITH TURF. HYDROMULCH TURF IN ALL OTHER DISTURBED AREAS AS IDENTIFIED ON GRADING AND EROSION CONTROL PLANS. ALL FRONTAGE AND SIDE YARDS ARE TO RECEIVE IRRIGATION.

NOTE: INCLUDE (2) TORO SB-90-PC2 STREAM BUBBLERS TO EACH NEW TREE. ATTACH EACH BUBBLER TO TORO 570-6" POPUP. LOCATE BUBBLERS INSIDE TREE WELL OF EACH TREE ON OPPOSITE SIDES OF THE ROOT BALL. ALL BUBBLERS TO BE ZONED SEPARATELY FROM OTHER HEADS. CONTRACTOR RESPONSIBLE FOR PIPE SIZING, SLEEVING, ETC. AND ALL OTHER REQUIREMENTS TO MAKE CIRCUIT(S) OPERABLE. TOTAL COUNT FOR BUBBLERS AND VALVE(S) NOT SHOWN IN IRRIGATION KEY. IF TREE IS LOCATED IN DRIP ZONE, IN LIEU OF BUBBLER USE (2) RAIN BIRD XSB-180-025 XERI-BUBBLERS W/ SXB-180-SPYK SPIKE TIED INTO EMITTER TUBING.



VICINITY MAP



AS-BUILT
 THIS RECORD DRAWING IS COMPILATION OF A COPY OF THE SEALED LANDSCAPE DRAWING FOR THIS PROJECT, MODIFIED BY ADDENDA, CHANGE ORDERS, AND INFORMATION FURNISHED BY THE CONTRACTOR. THE INFORMATION SHOWN ON THE RECORD DRAWINGS THAT WAS PROVIDED BY THE CONTRACTOR OR OTHERS NOT ASSOCIATED WITH THE LANDSCAPE ARCHITECT CANNOT BE VERIFIED FOR ACCURACY OR COMPLETENESS. THE ORIGINAL SEALED DRAWING ARE ON FILE AT THE OFFICES OF FAIN CUPPETT LANDSCAPE ARCHITECTS LLC.
 J. Cuppett
 FAIN CUPPETT LANDSCAPE ARCHITECTS LLC. 10/20/16 DATE

IRRIGATION NOTES:

- IRRIGATION LINES ARE SOMETIMES SHOWN OUTSIDE PLANTING BEDS FOR GRAPHIC CLARITY ONLY. ADJUST INSIDE BEDS ON SITE.
- AVOID TRENCHING WITHIN DRIP LINE OF EXISTING TREES. WHERE NECESSARY, TRENCH RADIALLY, RATHER THAN ACROSS THE ROOT SYSTEM.
- MAIN LINE TO BE 2-1/2".
- ALL SLEEVES UNDER PAVING TO EXTEND 12" PAST EDGE OF PAVING. COORDINATE WORK WITH GENERAL AND PAVING SUBCONTRACTOR.
- ALL HEADS TO BE 4" POPS IN LAWNS. ALL HEADS WITH CHECK VALVES. COORDINATE SLEEVE SIZE AND LOCATION FOR FREEZE SENSOR, RAIN GAUGE AND CONTROLLER WITH GENERAL CONTRACTOR. SEAL ALL BUILDING PENETRATIONS WATER TIGHT.
- SEE DETAIL SHEET FOLLOWING FOR IRRIGATION DETAILS.
- PRESSURE ESTIMATED AT 80 PSI; MINIMUM 50 GPM AS PROVIDED BY CITY. VERIFY ON SITE AND REPORT TO LANDSCAPE ARCHITECT PRIOR TO BEGINNING ANY WORK.
- CONTRACTOR RESPONSIBLE FOR LOCATION OF ALL UTILITIES INCLUDING BUT NOT LIMITED TO TELEPHONE, TELEGRAPH, ELECTRIC, GAS, WATER, AND SEWER. ANY DAMAGE TO UTILITIES TO BE REPAIRED BY CONTRACTOR AT NO COST TO OWNER. REFER TO SITE/UTILITY PLANS.
- VERIFY 100% COVERAGE OF SYSTEM OVER ALL PLANTING & LAWN AREAS AS SHOWN ON DRAWINGS.
- UNLESS NOTED OTHERWISE, THERE ARE NO EXISTING SLEEVES. IRRIGATION CONTRACTOR TO SIZE AND COORDINATE SLEEVE INSTALLATION AS NEEDED IN ALL LOCATIONS UNDER PAVEMENT.
- QUANTITIES ARE PROVIDED AS A COURTESY AND ARE NOT INTENDED FOR BID PURPOSES. CONTRACTOR TO VERIFY ALL QUANTITIES PRIOR TO BIDDING.
- IF DOUBLE CHECK IS PROHIBITED BY LOCAL CODE/ORDINANCE, SUBSTITUTE WITH APPROVED BACKFLOW PREVENTION DEVICE.
- ALL WORK IN ACCORDANCE WITH LOCAL, STATE, & NATIONAL CODES & ORDINANCES.
- CONTRACTOR TO SIZE CONTROL SIZE WIRE AS NECESSARY. HOWEVER, MINIMUM SIZE TO BE 14 GAUGE PER NATIONAL ELECTRICAL CODE. ALL SPLICES WITH APPROVED MANUFACTURED CONNECTOR IN VALVE BOX. DO NOT LOCATE VALVE BOXES IN SWALES, LOW AREAS, OR ANY OTHER LOCATIONS THAT MAY COLLECT WATER.
- CONTROLLER TO BE WIRED ON DEDICATED 110 VOLT CIRCUIT AND GROUNDED W/"GROUNDING SPIKE" PER MANUFACTURER'S INSTRUCTIONS.
- ADJUST HEADS TO AVOID OVERSPRAY ONTO STREETS, ROADWAYS, BUILDINGS AND ELECTRICAL EQUIPMENT.
- CONTRACTOR IS RESPONSIBLE FOR ADJUSTING FLOW CONTROL AND/OR PRESSURE REGULATOR AT EACH CONTROL VALVE AS NECESSARY TO MAKE SYSTEM OPERATE AS INTENDED.
- DRIP IRRIGATION IS INTENDED TO MAINTAIN ESTABLISHED PLANT MATERIAL. CONTRACTOR SHALL HAND WATER AND MAINTAIN NEW PLANTINGS AS REQUIRED UNTIL ESTABLISHMENT AND ACCEPTANCE.

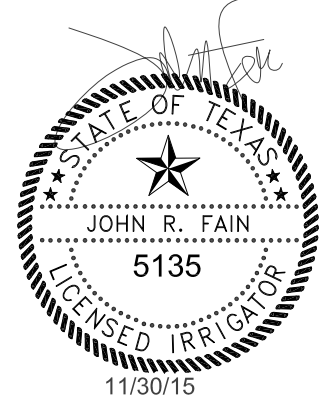
Irrigation Equipment Table

Qty	Sym	Equipment
5	⊕	Line Ball Valve Size to match mainline
13	⊙	3/4" Quick Coupler
22	⊙	Sprays, Rotors, Bubblers
		HUNTER Control Valve (CV w/ACCUSYNC Pressure Regulator. Does not include drip control valves. (size as indicated on drawing)
		Drip Circuits
		HUNTER Control Zone Kit (as specified)
1	⊠	BASELINE BASE STATION 1000 Controller biLine Two Wire, biCoder Decoder
		BL-5315B Moisture sensor, BL-5402 Event decoder Hunter Rain/Freeze Clik
1	⌒	2" Double Check Double Gate Valve
1	⊙	2" FEBCO 650A Wye Strainer
1	⊠	2" Meter
4	⊙	TORO 570 Z PR-MPR 15' 360
13	⊙	TORO 570 Z PR-MPR 15' 090
77	⊙	TORO 570 Z PR-MPR 15' 180
17	⊙	TORO 570 Z PR-MPR 4' EST
86	●	TORO 570 Z PR-MPR 12' 180
17	●	TORO 570 Z PR-MPR 10' 180
9	⊙	TORO 570 Z PR-MPR 4' SST
11	▼	HUNTER PGP BLUE NOZZLE 8.0 180
22	▼	HUNTER PGP BLUE NOZZLE 4.0 ADJ
66	⊙	TORO 570 Z PR-MPR 9' SST
3	⊙	TORO 570 Z PR-MPR 15' 120
12	⊠	TORO 570 Z PR-MPR 8' 180

NOTE: FOR ALL DRIP CIRCUITS USE
 • HUNTER PROFESSIONAL LANDSCAPE DRIPLINE PLD-04-18 (18" O.C.)
 • STAPLES EVERY 5'
 • CONTROL ZONE KIT ICZ-101-40
 • PLDBV FLUSH VALVE LOCATED IN 6" BOX

NOTE: 3/4" PVC UNDER PAVING ON ALL DRIP CIRCUITS. DO NOT RUN EMITTER TUBING UNDER PAVING, WALLS, ETC.

CAUTION!!!
 UNDERGROUND UTILITIES ARE LOCATED IN THIS AREA. 48 HOURS PRIOR TO ANY CONSTRUCTION ACTIVITIES, CONTACT LINE LOCATES FOR FRANCHISE UTILITY INFO. CALL BEFORE YOU DIG:
 TEXAS EXCAVATION SAFETY SYSTEM (TESS) 1-800-344-8377
 TEXAS ONE CALL SYSTEMS 1-800-245-4545
 LONE STAR NOTIFICATION CENTER 1-800-669-8344 EXT. 5



FAIN • CUPPETT LANDSCAPE ARCHITECTS, LLC
 8233 Mid Cities Blvd, Suite B
 North Richland Hills, TX 76182-4761 817-479-0730
 PLANNING AND OPEN SPACE PLANNING • LANDSCAPE ARCHITECTURE • IRRIGATION DESIGN

THIS ELECTRONIC DRAWING FILE IS RELEASED UNDER THE AUTHORITY OF JOHN R. FAI, LICENSED IRRIGATOR & LANDSCAPE ARCHITECT LICENSE NUMBER 5135. LANDSCAPE ARCHITECT REGISTRATION NUMBER 800 ON 11/30/15 WHO MAINTAINS THE ORIGINAL FILE. THIS ELECTRONIC DRAWING FILE MAY BE USED AS A BACKGROUND DRAWING. PURSUANT TO RULE 3.053 OF THE RULES AND REGULATIONS OF THE TEXAS BOARD OF ARCHITECTURAL EXAMINERS AND THE RULES AND REGULATIONS OF THE TEXAS BOARD OF ARCHITECTURAL EXAMINERS AND THE TEXAS DEPARTMENT OF LICENSING AND REGULATION, THE USER OF THIS ELECTRONIC DRAWING FILE AGREES TO ASSUME ALL RESPONSIBILITY FOR ANY MODIFICATION TO OR RESULT OF THIS DRAWING FILE THAT IS INCONSISTENT WITH THE REQUIREMENTS OF THE RULES AND REGULATIONS OF THE TEXAS BOARD OF ARCHITECTURAL EXAMINERS AND THE TEXAS DEPARTMENT OF LICENSING AND REGULATION. NO PERSON MAY MAKE MODIFICATIONS TO THIS ELECTRONIC DRAWING FILE WITHOUT THE IRRIGATOR/LANDSCAPE ARCHITECT'S EXPRESS WRITTEN PERMISSION.

Winkelmann & Associates, Inc.
 CONSULTING CIVIL ENGINEERS • SURVEYORS
 8750 HILDCREST PLAZA DRIVE, SUITE 325
 FORT WORTH, TEXAS 76114
 (817) 492-7098
 (817) 492-7099 FAX
 WWW.WINKELMANN-ASSOCIATES.COM

IRRIGATION PLAN
 SEC N. GOLIAD ST. AND E.
 QUAIL RUN RD.
 ROCKWALL, TEXAS

No.	DATE	REVISION	APPROV.
1.	12/18/2015	ISSUE FOR CONSTRUCTION	MB
2.			
3.			
4.			
5.			
6.			