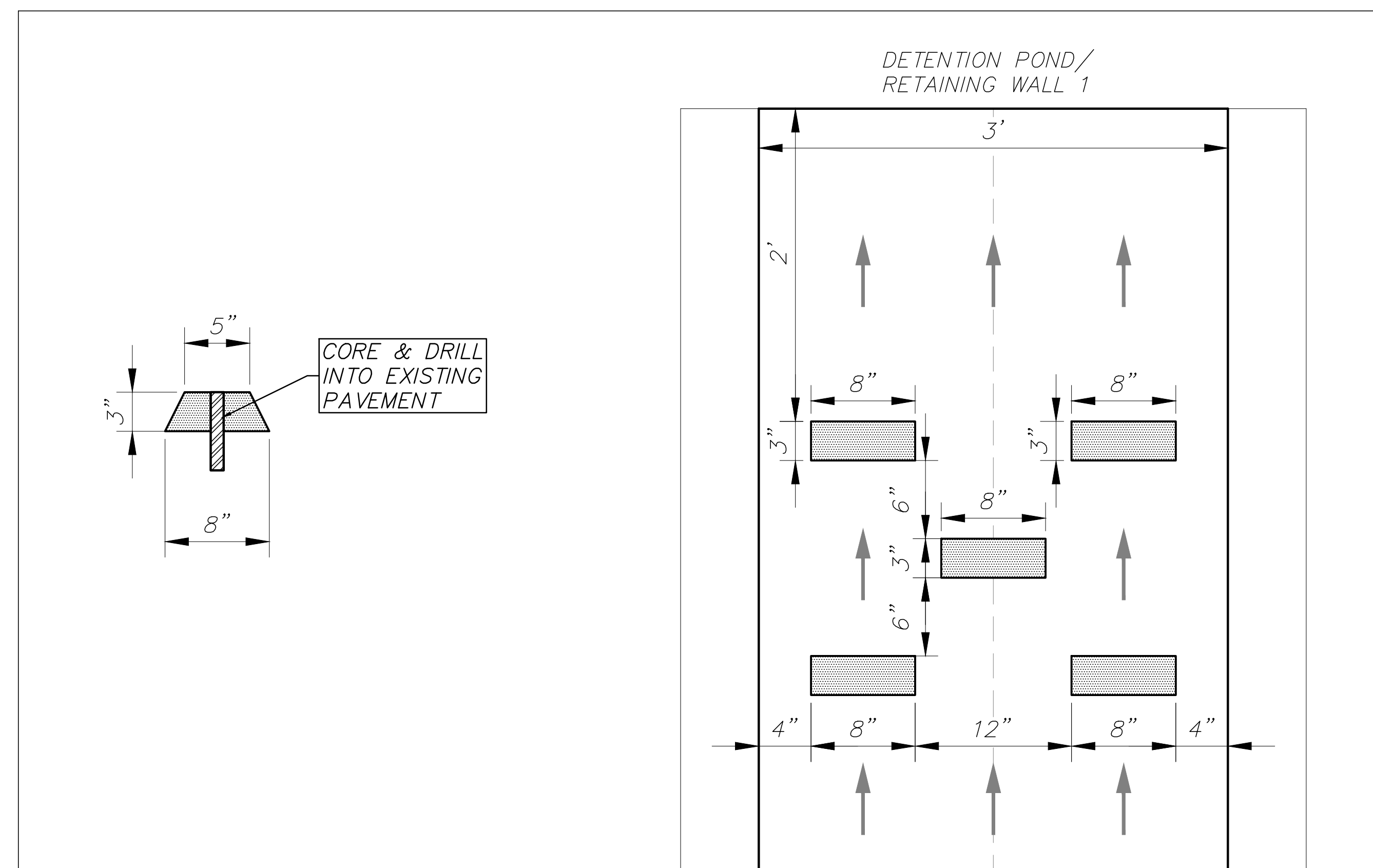


FENCE POST EXTENSION DETAIL
N.T.S.

AS-BUILT

THIS RECORD DRAWING IS COMPILATION OF A COPY OF THE SEALED ENGINEERING DRAWING FOR THIS PROJECT; MODIFIED BY ADDENDA, CHANGE ORDERS, AND INFORMATION FURNISHED BY THE CONTRACTOR. THE INFORMATION SHOWN ON THE RECORD DRAWINGS IS PROVIDED BASED ON SURVEYING AT THE SITE AND INFORMATION PROVIDED BY THE CONTRACTOR OR OTHERS NOT ASSOCIATED WITH THE DESIGN ENGINEER. THE ORIGINAL SEALED DRAWING ARE ON FILE AT THE OFFICES OF WINKELMANN AND ASSOCIATES, INC.

Maria C. Boilla
WINKELMANN AND ASSOCIATES, INC. DATE 10-19-2016



BAFFLE BLOCK DETAIL
N.T.S.

No.	DATE	REVISION	M.B.
1.	09/13/2016	PUNCHLIST REVISION 1	APPROV
2.			
3.			
4.			
5.			
6.			

Winkelmann & Associates, Inc.
CONSULTING CIVIL ENGINEERS SURVEYORS
7720 HILGREET PLAZA DRIVE, SUITE 325
DALLAS, TEXAS 75243
(972) 490-7090
FAX (972) 490-7096
Professional Engineer Registration No. 89
Professional Surveyor Registration No. 100866-00
Professional Engineer Registration No. 100866-00
Professional Surveyor Registration No. 100866-00

STATE OF TEXAS
MARIA C. BOILLA-NICHOLS
100106
LICENSED
PROFESSIONAL ENGINEER
10-19-2016
THE SEAL APPEARING ON THIS DOCUMENT WAS AUTHORIZED BY MARIA C. BOILLA-NICHOLS P.E. # 100106

CIVIL DETAIL
SEC. N. GOLIAD ST. AND E. QUAIL RUN RD.
ROCKWALL, TEXAS

C-15.17
DAL574

ALL RESPONSIBILITY FOR ADEQUACY OF DESIGN REMAINS WITH THE DESIGN ENGINEER. THE CITY OF ROCKWALL, IN REVIEWING AND RELEASING PLANS FOR CONSTRUCTION, ASSUMES NO RESPONSIBILITY FOR ADEQUACY OR ACCURACY OF DESIGN.