

GENERAL NOTES:

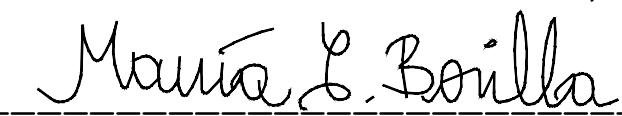
1. UTILIZE FLUSH WALK & CURB AS MUCH AS DESIRABLE ALONG STORE FRONT. TRANSITION BACK TO CURB AND RETURN CURB TO END OF BUILDING. SEE DETAIL 'C' FOR TRANSITION TO 6" CURB.
2. INSTALL 12" DIAMETER PRECAST CONCRETE BOLLARDS EQUALLY SPACED AT 16'-0" TO 20'-0" ON CENTER UNTIL THE TRANSITION TO A 6" CURB (IF APPLICABLE). LOCATE FIRST BOLLARDS ON BOTH SIDE OF BUILDING ENTRANCE AS INDICATED. DO NOT LOCATE BOLLARDS WITHIN CROSSWALK AREA.
3. PRECAST CONCRETE BOLLARDS, SEE SPECS., CONTRACTOR SUPPLIED AND INSTALLED.
4. PRECAST CONCRETE BOLLARDS TO INCLUDE DOMED TOP, 1" REVEAL, SAND BLAST FINISH WITH 2" PVC INSERT FOR REBAR DOWEL.
5. PRECAST CONCRETE BOLLARDS TO BE INSTALLED IN MASTIC INCLUDING 24" #9 REBAR DOWEL, INSTALLED WITH 17" EXPOSED. CAULK BASE TO SIDEWALK.
6. PAINT TRANSITION AND 6" CURB YELLOW, SEE SPECIFICATIONS.
7. SEE SPECIFICATION SECTION 32 17 00 - PAVING SPECIALTIES FOR MORE INFORMATION.

<p>FLUSH WALK AT PEDESTRIAN CROSSING</p> <p><i>MASTER SPECIFICATION DETAIL</i></p>	<p>DATE: 10/11/12</p> <p>SCALE: NONE</p> <p>DRAWN: ZAW</p>
	<p>ASD-161</p> <p>MODIFIED</p>

DETAIL ASD-161 SHOWN FOR COORDINATION PURPOSES ONLY.
WORK BY KROGER BUILDING CONTRACTOR

AS-BUILT

THIS RECORD DRAWING IS COMPILATION OF A COPY OF THE SEALED ENGINEERING DRAWING FOR THIS PROJECT; MODIFIED BY ADDENDA, CHANGE ORDERS, AND INFORMATION FURNISHED BY THE CONTRACTOR. THE INFORMATION SHOWN ON THE RECORD DRAWINGS IS PROVIDED BASED ON SURVEYING AT THE SITE AND INFORMATION PROVIDED BY THE CONTRACTOR OR OTHERS NOT ASSOCIATED WITH THE DESIGN ENGINEER. THE ORIGINAL SEALED DRAWING ARE ON FILE AT THE OFFICES OF WINKELMANN AND ASSOCIATES, INC.

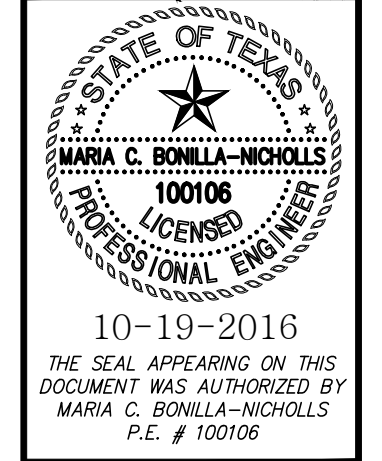

 WINKELMANN AND ASSOCIATES, INC.

10-19-2016
 DATE

No.	DATE	REVISION
1.	12/09/2015	BULLETIN #1
2.	12/18/2015	ISSUE FOR CONSTRUCTION
3.		
4.		
5.		
6.		

Winkelmann & Associates, Inc.

CONSULTING CIVIL ENGINEERS ■ SURVEYORS
 8720 HILGREET PLAZA DRIVE, SUITE 325
 ROCKWALL, TEXAS 75087
 (972) 490-7090
 (972) 490-7096 FAX
 State Engineer Registration No. 89
 State Surveyor Registration No. 100666-00
 Surveyor at Large, Williamson & Associates, Inc.



KROGER DETAILS
SEC N. GOLIAD ST. AND E. QUAIL
RUN RD.
ROCKWALL, TEXAS

C-15.13
DAL574

ALL RESPONSIBILITY FOR ADEQUACY OF DESIGN REMAINS WITH THE DESIGN ENGINEER. THE CITY OF ROCKWALL, IN REVIEWING AND RELEASING PLANS FOR CONSTRUCTION, ASSUMES NO RESPONSIBILITY FOR ADEQUACY OR ACCURACY OF DESIGN.