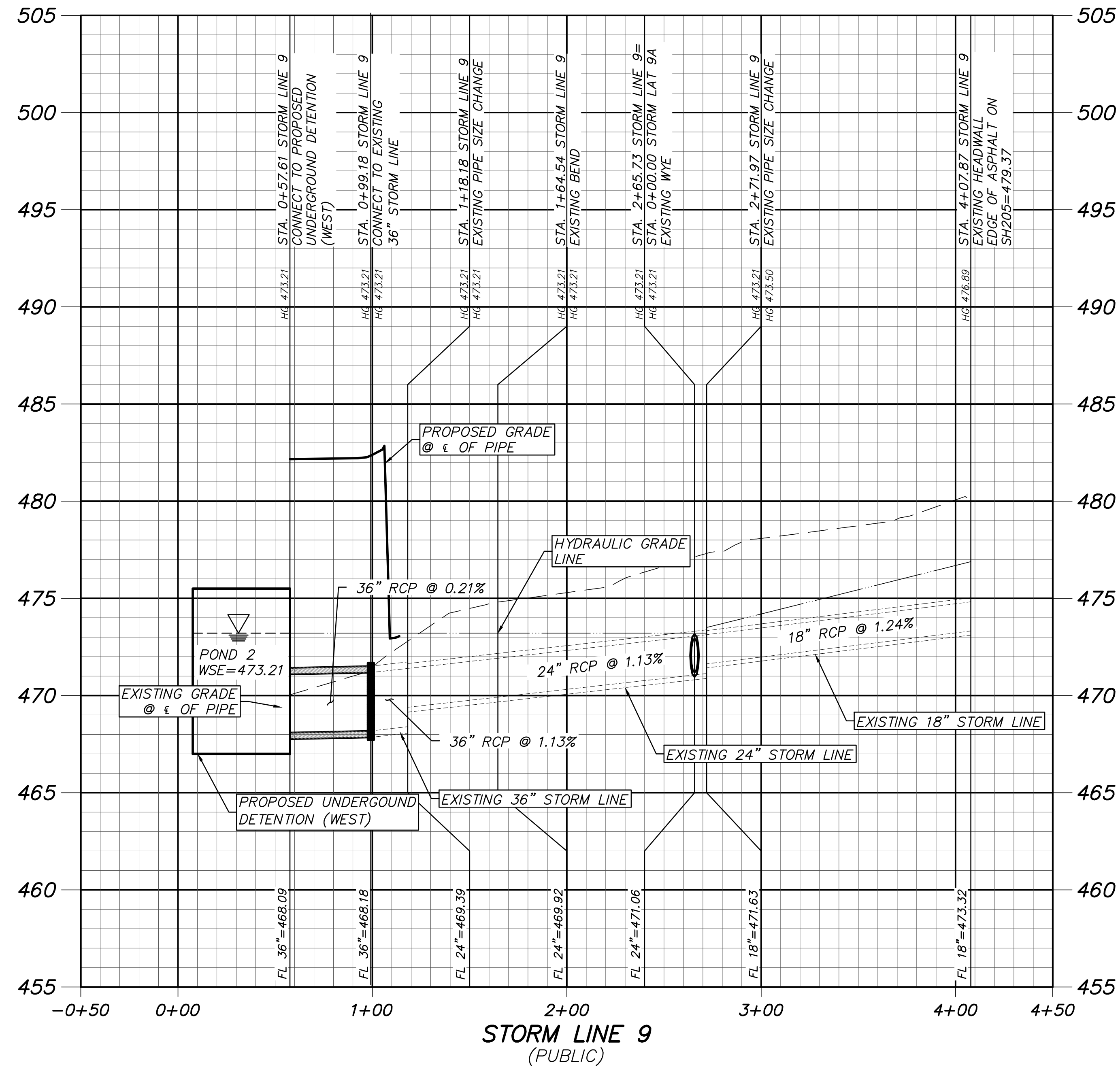


0+20.08	0+14.58	0+14.58	0+00.00	0+00.00	-1+43.55
Q100= 82.32 c.f.s.	Q100= 22.00 c.f.s.	Q100= 22.00 c.f.s.	Q100= 22.00 c.f.s.	Q100= 22.00 c.f.s.	Q100= 22.00 c.f.s.
Qcap= 169.16 c.f.s.	Qcap= 55.79 c.f.s.	Qcap= 55.79 c.f.s.	Qcap= 46.77 c.f.s.	Qcap= 46.77 c.f.s.	Qcap= 46.77 c.f.s.
Vp= 10.62 ft/sec	Vp= 12.41 ft/sec	Vp= 12.41 ft/sec	Vp= 9.70 ft/sec	Vp= 9.70 ft/sec	Vp= 9.70 ft/sec
sf= 0.007 ft/ft	sf= 0.019 ft/ft	sf= 0.019 ft/ft	sf= 0.013 ft/ft	sf= 0.013 ft/ft	sf= 0.013 ft/ft
n= 0.013	n= 0.013	n= 0.013	n= 0.013	n= 0.013	n= 0.013
d= 2.19 ft	d= 0.99 ft	d= 0.99 ft	d= 0.99 ft	d= 0.99 ft	d= 1.18 ft



0+57.61	0+99.18	0+99.18	1+18.18	1+18.18	1+64.54	1+64.54	2+65.73	2+65.73	2+71.97	2+71.97	4+07.87
Q100= 38.70 c.f.s.	Q100= 38.74 c.f.s.	Q100= 38.74 c.f.s.	Q100= 38.78 c.f.s.	Q100= 38.78 c.f.s.	Q100= 38.86 c.f.s.	Q100= 38.86 c.f.s.	Q100= 16.52 c.f.s.	Q100= 16.52 c.f.s.	Q100= 16.58 c.f.s.	Q100= 16.58 c.f.s.	Q100= 16.58 c.f.s.
Qcap= 30.57 c.f.s.	Qcap= 70.90 c.f.s.	Qcap= 70.90 c.f.s.	Qcap= 24.05 c.f.s.	Qcap= 24.05 c.f.s.	Qcap= 24.05 c.f.s.	Qcap= 24.05 c.f.s.	Qcap= 24.05 c.f.s.	Qcap= 24.05 c.f.s.	Qcap= 11.70 c.f.s.	Qcap= 11.70 c.f.s.	Qcap= 11.70 c.f.s.
V= 5.47 ft/sec	V= 5.48 ft/sec	V= 5.48 ft/sec	V= 12.34 ft/sec	V= 12.37 ft/sec	V= 12.37 ft/sec	V= 12.37 ft/sec	V= 5.26 ft/sec	V= 5.26 ft/sec	V= 9.38 ft/sec	V= 9.38 ft/sec	V= 9.38 ft/sec
sf= 0.003 ft/ft	sf= 0.003 ft/ft	sf= 0.003 ft/ft	sf= 0.029 ft/ft	sf= 0.030 ft/ft	sf= 0.030 ft/ft	sf= 0.030 ft/ft	sf= 0.005 ft/ft	sf= 0.005 ft/ft	sf= 0.025 ft/ft	sf= 0.025 ft/ft	sf= 0.025 ft/ft
n= 0.013	n= 0.013	n= 0.013	n= 0.013	n= 0.013	n= 0.013	n= 0.013	n= 0.013	n= 0.013	n= 0.013	n= 0.013	n= 0.013

AS-BUILT

THIS RECORD DRAWING IS COMPILATION OF A COPY OF THE SEALED ENGINEERING DRAWING FOR THIS PROJECT; MODIFIED BY ADDENDA, CHANGE ORDERS, AND INFORMATION FURNISHED BY THE CONTRACTOR. THE INFORMATION SHOWN ON THE RECORD DRAWINGS IS PROVIDED BASED ON SURVEYING AT THE SITE AND INFORMATION PROVIDED BY THE CONTRACTOR OR OTHERS NOT ASSOCIATED WITH THE DESIGN ENGINEER. THE ORIGINAL SEALED DRAWING ARE ON FILE AT THE OFFICES OF WINKELMANN AND ASSOCIATES, INC.

*Maria L. Bonilla*  
WINKELMANN AND ASSOCIATES, INC.

10-19-2016  
DATE

ALL RESPONSIBILITY FOR ADEQUACY OF DESIGN REMAINS WITH THE DESIGN ENGINEER. THE CITY OF ROCKWALL, IN REVIEWING AND RELEASING PLANS FOR CONSTRUCTION, ASSUMES NO RESPONSIBILITY FOR ADEQUACY OR ACCURACY OF DESIGN.

NOTES:  
1. REFER TO GRADING PLAN FOR ALL RIM ELEVATIONS

STORM PROFILE  
SEC N. GOLIAD ST. AND E. QUAIL  
RUN RD.  
ROCKWALL, TEXAS

C-11.12  
DAL574

No.	DATE	REVISION
6.		
5.		
4.	03/24/2016	RESPONSE TO RFI 025
3.	12/18/2015	ISSUE FOR CONSTRUCTION
2.	12/09/2015	BULLETIN #1
1.		

**Winkelmann & Associates, Inc.**  
CONSULTING CIVIL ENGINEERS • SURVEYORS  
1720 HILGRET PLAZA DRIVE, SUITE 325  
ROCKWALL, TEXAS 75087  
(972) 960-7090  
FAX (972) 960-7096  
Professional Registration No. 89  
Professional Engineer Registration No. 101866-c-00  
Professional Surveyor Registration No. 101866-c-00  
Professional Engineer Registration No. 101866-c-00  
Professional Surveyor Registration No. 101866-c-00

STATE OF TEXAS  
MARIAN C. BONILLA-MORRIS  
10106  
LICENSED  
PROFESSIONAL ENGINEER  
10-19-2016  
THE SEAL APPEARING ON THIS DOCUMENT WAS AUTHORIZED BY MARIAN C. BONILLA-MORRIS, P.E. # 101016