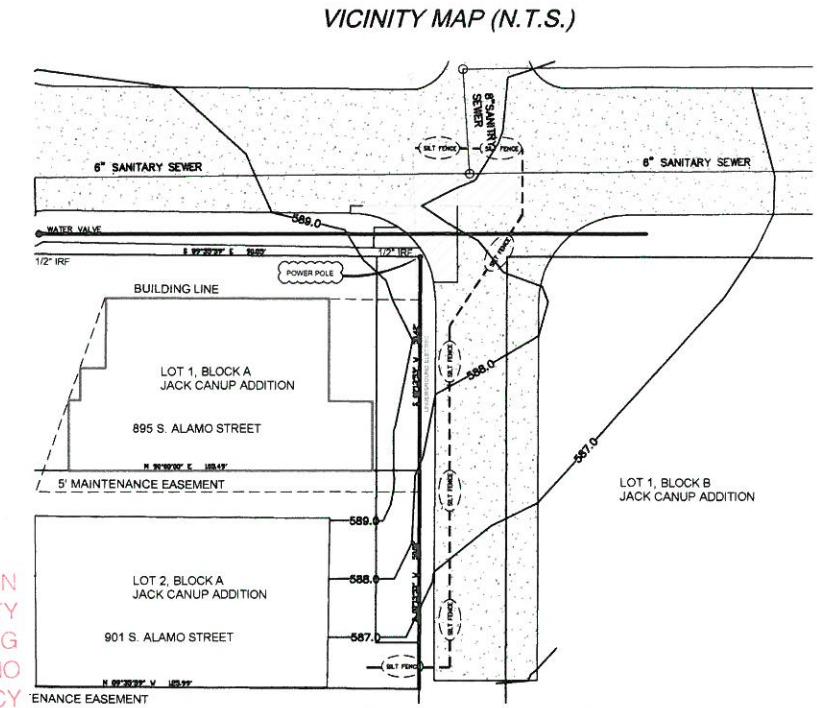
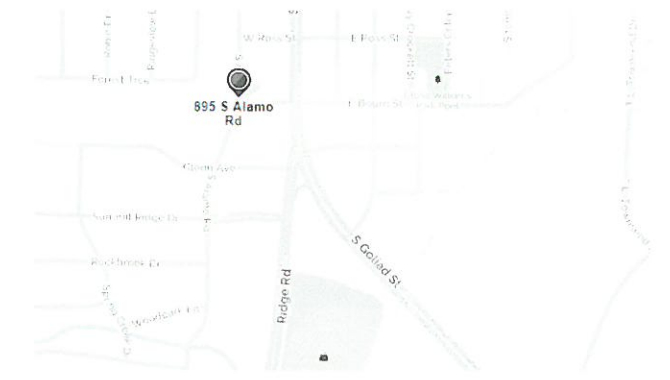


CAUTION: EX. UTILITIES (GAS AND OVERHEAD ELECTRIC)  
CONTRACTOR TO CALL FOR LOCATES 48 HRS. PRIOR TO BEGINNING CONSTRUCTION  
CONTRACTOR SHALL BE RESPONSIBLE FOR REPAIRING UTILITIES DAMAGED DURING CONSTRUCTION.

ATMOS GAS 1-800-344-8377  
ONCOR ELECTRIC 1-800-233-2133  
TEXAS ONE CALL: 1-800-245-4545

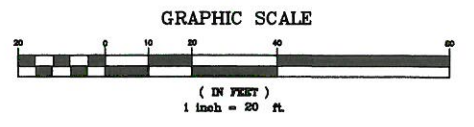


RELEASED FOR CONSTRUCTION  
ALL RESPONSIBILITY FOR ADEQUACY OF DESIGN REMAINS WITH THE DESIGN ENGINEER. THE CITY OF ROCKWALL, IN REVIEWING AND RELEASING PLANS FOR CONSTRUCTION, ASSUMES NO RESPONSIBILITY FOR ADEQUACY OR ACCURACY OF DESIGN.

DATE: 7-22-16

DESIGNED BY: [Signature]

APPROVED FOR CONSTRUCTION: [Signature]



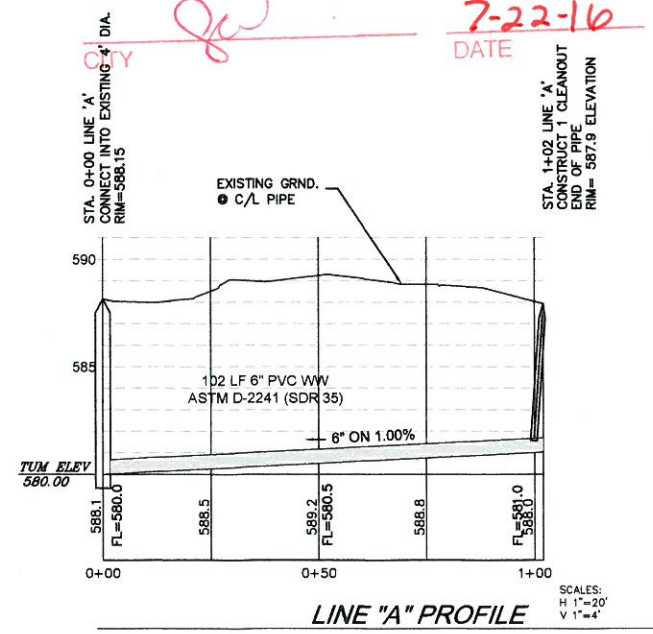
DESIGNED BY: \_\_\_\_\_ DATE: \_\_\_\_\_  
XAVIER CHAPA ENGINEERING/SURVEYING, FIRM REGISTRATION NO. F-9156

APPROVED FOR CONSTRUCTION: \_\_\_\_\_ DATE: \_\_\_\_\_

BENCHMARK:  
1. MANHOLE RIM AT THE INTERSECTION OF BOURN STREET AND THE ALLEY EAST OF S. ALAMO STREET  
ELEVATION 588.15 - GPS NAVD 1988 DATUM

- NOTES:
- CONSTRUCT 102 LN. FT. OF 6" ASTM 2241, SDR 35, PVC SANITARY SEWER MAIN WITH CLEANOUT AT END OF MAIN. CONNECT TO EXISTING MANHOLE. REMOVE AND REPLACE STREET PANELS AS SHOWN, TO CITY OF ROCKWALL STANDARDS.
  - AT 895 S. ALAMO STREET - CONNECT EXISTING SANITARY SEWER TO NEW SANITARY SEWER MAIN. PROVIDE DOUBLE CLEANOUTS AT EASEMENT LINE PER CITY OF ROCKWALL PLUMBING CODE AND IN ACCORDANCE WITH CURRENT EDITION INTERNATIONAL RESIDENTIAL CODE FOR CITY OF ROCKWALL.
  - AT 901 S. ALAMO STREET - CONNECT EXISTING SANITARY SEWER TO NEW SANITARY SEWER MAIN. PROVIDE DOUBLE CLEANOUTS AT EASEMENT LINE PER CITY OF ROCKWALL PLUMBING CODE AND IN ACCORDANCE WITH CURRENT EDITION INTERNATIONAL RESIDENTIAL CODE FOR CITY OF ROCKWALL.
  - REMOVE AND REPLACE FULL STREET PANELS AS NECESSARY. NEW PANELS SHALL CONSIST OF 7" THICK 3600 PSI/28 DAY, 6.5 SACK MIX CONCRETE, REINFORCED WITH NO. 4, GRADE 60 REBAR AT 12" ON CENTERS EACH WAY, OR ACCORDING TO CITY OF ROCKWALL MINIMUM STANDARDS. ACCESSIBILITY RAMP SHALL BE MINIMUM 4" THICK 3600 PSI/28 DAY, 6.5 SACK CONCRETE, REINFORCED WITH NO. 3, GRADE 40 REBAR AT 12" ON CENTERS EACH WAY WITH SKID SURFACE ACCORDING TO MOST CURRENT ACCEPTABLE TOLR DESIGN.
- NOTE: ALL PAVING BATCH DESIGNS MUST BE APPROVED BY CITY OF ROCKWALL.

**FILE**



REV. NO.	DESCRIPTION	ENG.	DATE	DEV. SERVICES	DATE
1	ADD EROSION PLAN	XC	07/18		

<b>WASTE WATER PLAN</b>					
LOT 1 AND LOT 2, BLOCK A, JACK CANUP ADDITION					
895 AND 901 S. ALAMO STREET					
CITY OF ROCKWALL					
DESIGN	DRAWN	DATE	SCALE	NOTES	FILE NO.
XC	XC	08/2016	H: VARY V: 1"=4'		