

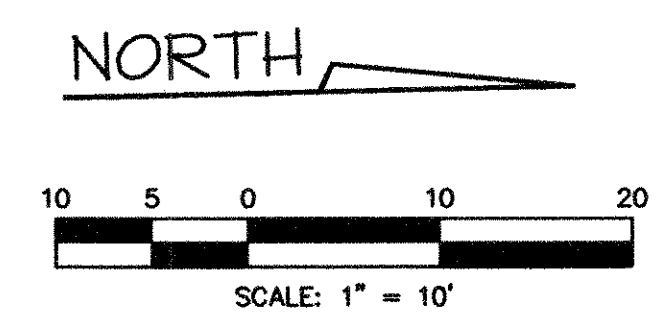
EROSION CONTROL
 ALLEY/FIRLANE IMPROVMENTS
 CITY OF ROCKWALL, TEXAS

RECORD DRAWING

No.	Date	Revision

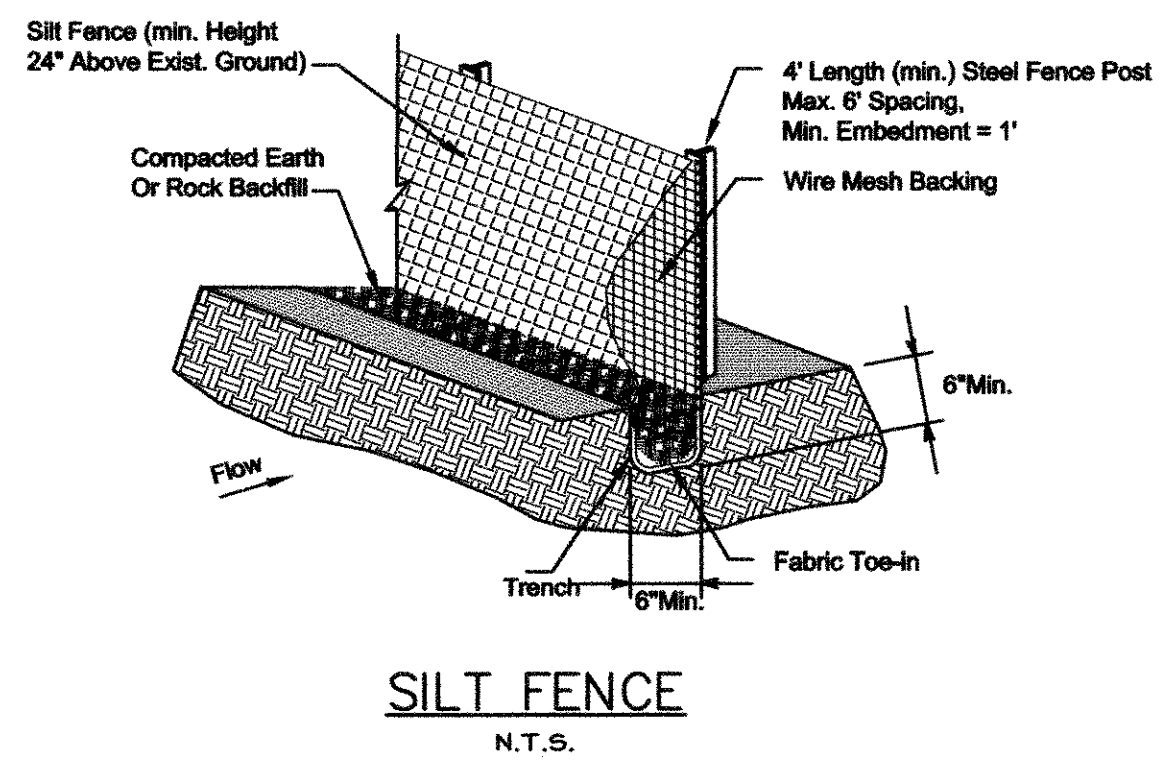
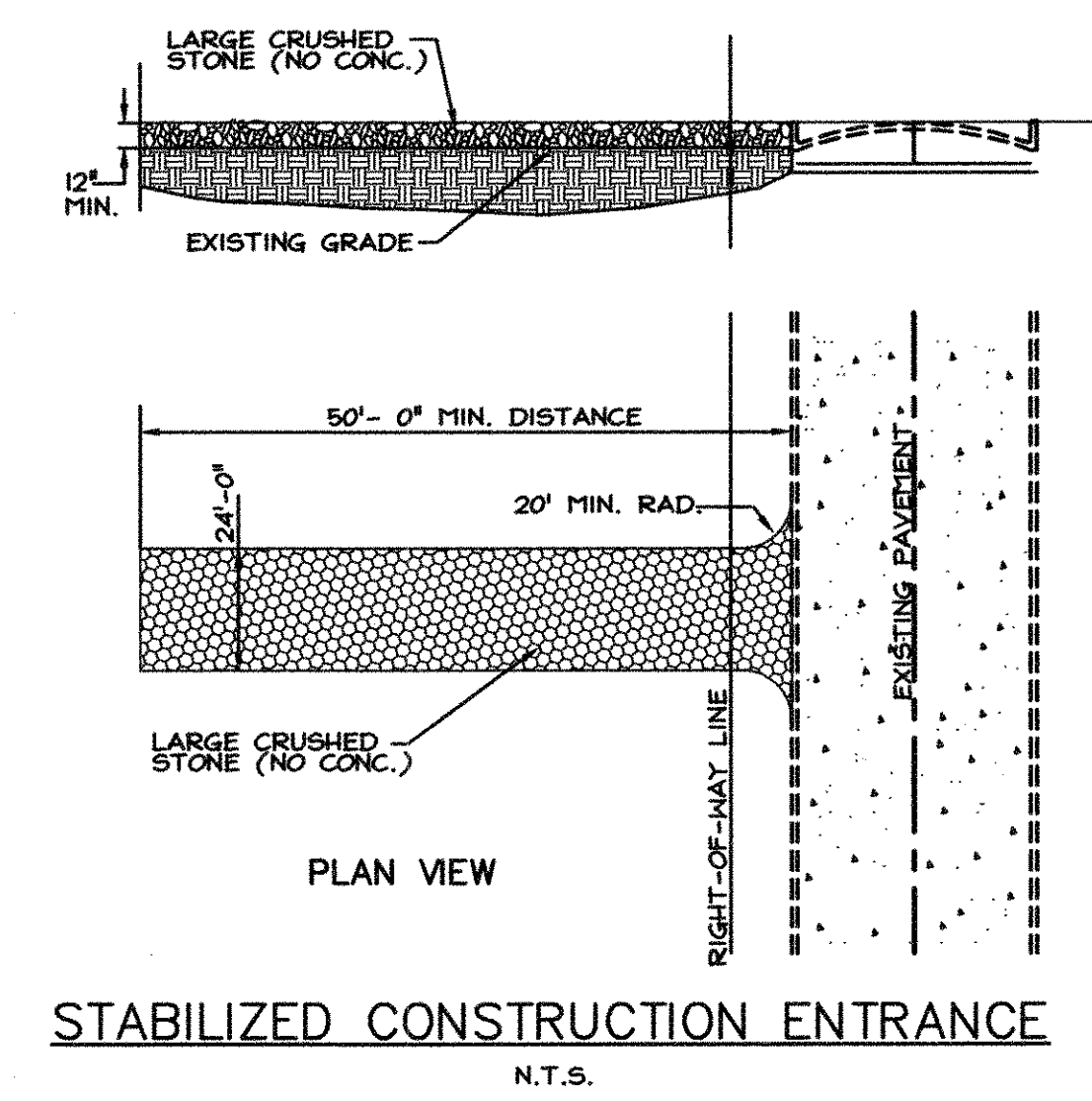
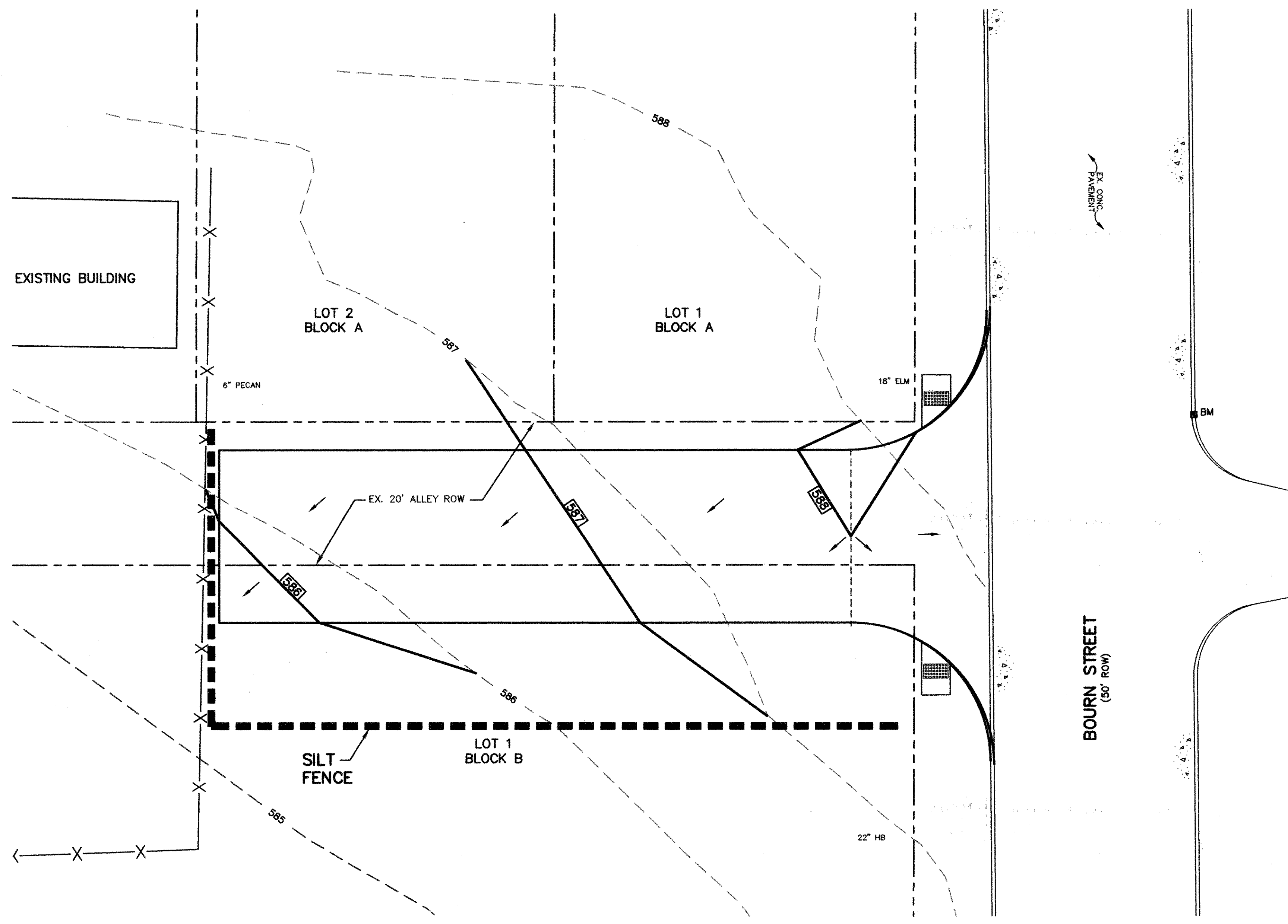
Scale: 1"=10'
 File Name: SITE
 Date: MARCH 2011
 Project No.: 2011100

Sheet
C3



EROSION CONTROL SPECIFICATIONS

- The Contractor shall provide and maintain erosion control devices in the areas indicated on the Erosion Control Plan or any other areas as directed by the Owner's representative.
- The Electrical Utility, Natural Gas, Telephone, and Cable TV Contractor shall re-establish any previously established erosion control measure or device that is disturbed by their construction, including vegetative cover.
- Site entry and exit locations shall be maintained in a condition which will prevent tracking or flowing of sediment onto public roadways. All sediment spilled, dropped, washed or tracked onto a public roadway must be removed immediately. When washing is required to remove sediment prior to entrance to a public roadway, it shall be done on an area stabilized with crushed stone which drains into an approved sediment basin. All fines imposed for tracking onto public roads shall be paid by the Contractor.
- Temporary seeding or other method of stabilization shall be initiated within 14 days of the last disturbance on any area of the site, unless additional construction on the area is expected within 21 days of the last disturbance.
- Upon completion of fine grading by Paving and Grading Contractor, all areas not otherwise permanently stabilized shall be seeded and maintained until a uniform coverage of 75% minimum density, as determined by the Owner's representative, is achieved.
- Erosion control devices may be added or reduced in the field as directed by the Owner's representative or as required by the City.
- Contractor shall install and use a temporary pit or basin for on-site disposal of concrete waste from mixing drums and chutes. Waste material will not be discharged to vacant lots, streets and drainage right-of-ways, etc.
- If pumps are used to remove water from excavated areas, filter the discharge to remove sediment and other pollutants before the water leaves the site.
- MAINTENANCE** - Erosion controls shall be repaired or replaced as inspection deems necessary or as directed by the Owner's representative. Accumulated silt at any erosion control device shall be removed when it reaches a depth of 6", and shall be distributed on site in a manner not contributing to additional siltation. Contractor shall inspect erosion devices within 24 hours after a storm event of 1/2 inch or greater.
- The Contractor is responsible for re-establishing any erosion control device which he disturbs. Each Contractor shall notify the Owner's representative of any deficiencies in the established erosion control measures which may lead to unauthorized discharge of storm water pollution, sedimentation, or other pollutants. Unauthorized pollutants include, but are not limited to, excess concrete dumping or concrete residue, paints, solvents, greases, fuel and lube oil, pesticides, and solid waste materials.



- NOTES:**
- NO ADJACENT SURFACE WATERS.
 - NO ADJACENT WETLANDS.
 - CONTRACTOR SHALL DETERMINE LOCATION OF STABILIZED ENTRANCE TO BEST FACILITATE CONSTRUCTION ACTIVITIES.

BENCHMARK: TOP OF CURB ON NORTH SIDE OF BOURN STREET AT THE WEST CURB RETURN OF ALLEY.
 ELEV. 588.68

RECORD DRAWING
 TO THE BEST OF OUR KNOWLEDGE, BENTLEY ENGINEERING, INC. HEREBY STATES THAT THIS PLAN IS AS-BUILT. THIS INFORMATION IS BASED ON SURVEYING AT THE SITE AND INFORMATION PROVIDED BY THE CONTRACTOR.
 DATE: DECEMBER 15, 2011