

- SPECIFICATIONS (OS 79)**
1. Max. flow rate: 75 GPM
 2. Max. oil capacity: 125 Gallons (16 cu. ft.)
 3. Max. oil capacity: 62 Gallons
 4. Standard cover handle H20/H250 handle bolts.
 5. Maximum operating temperature 190°F continuous.

NOTES

1. Factory installed Ball in box control.
2. Do not use for pressure applications.
3. 1/2" thick sediment high density polyethylene works best with ball control for up to 8.0' of depth.
4. Ball control will prevent debris from settling for deeper burial depth.
5. Cover placement allows full access to tank.
6. Designed narrow footprint allows clearance through doorways and down stairwells.
7. Engineered inlet and outlet diffusers are 8" for on the floor or buried applications.
8. Inlet/Outlet Relief / Anti-siphon.

DIFFUSION FLOW TECHNOLOGY

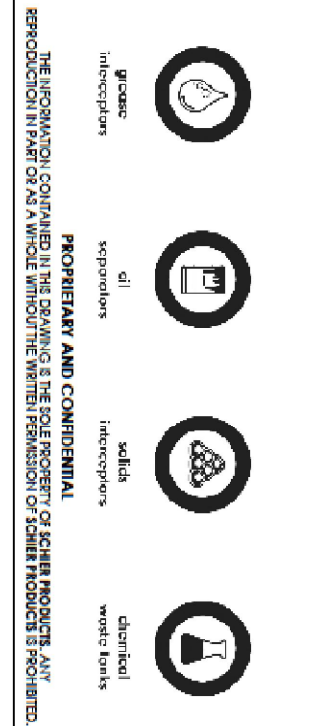
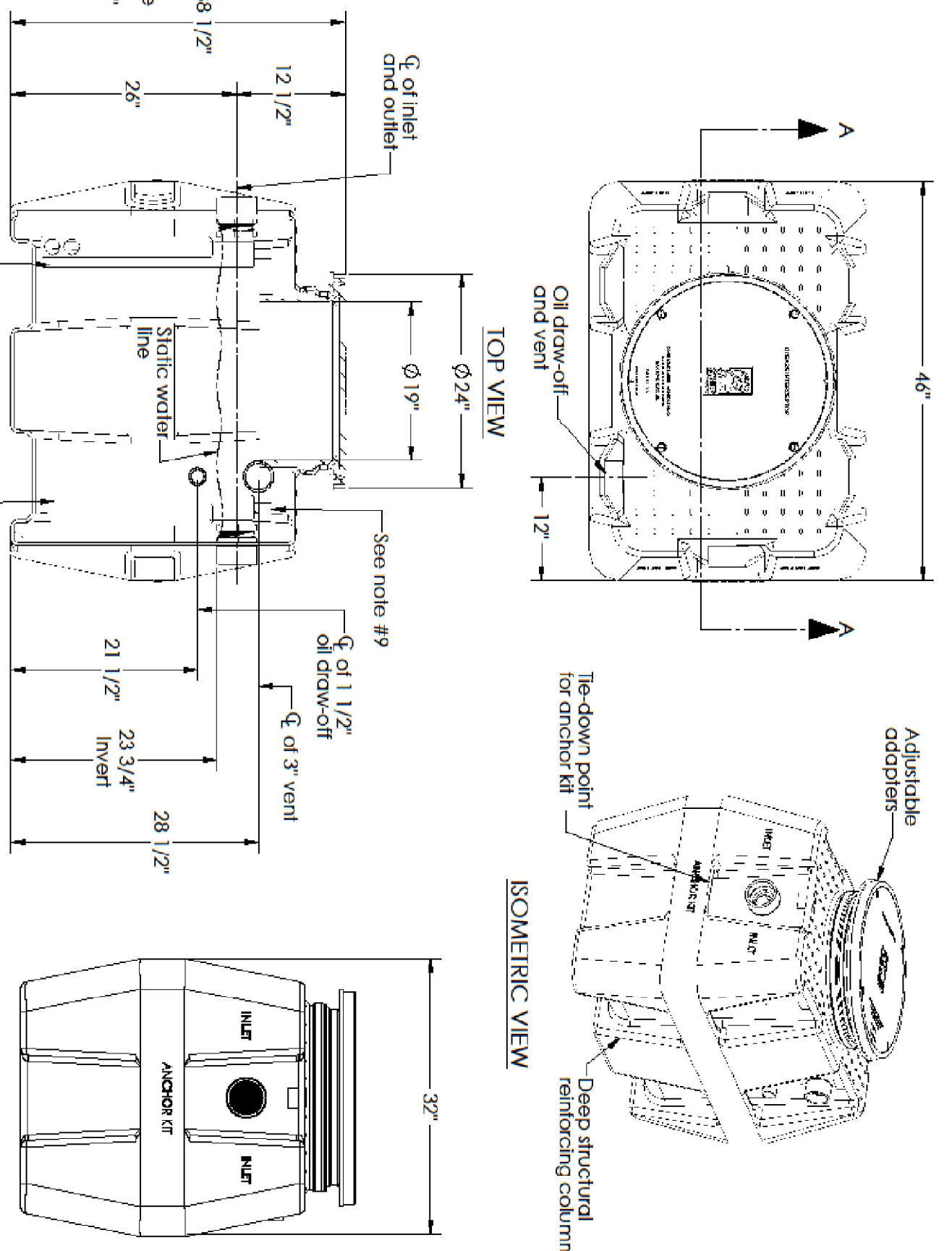
The first diffuser spins incoming effluent into two points of separation. The collimated openings gently reduce effluent turbulence. The effluent enters the tank without disturbing the oil or sediment layers.

ENGINEER SPECIFICATION GUIDE

Oil separator shall be a minimum 18" diameter and 12" high in polyethylene with a minimum 3/8" uniform wall thickness. Separator shall be furnished for above or below grade installation, with a 1-1/2" diameter inlet and outlet diffusers. The separator shall be furnished with a cover of 1/2" thick sediment high density polyethylene with a minimum 3/8" uniform wall thickness. Separator shall be furnished with a cover of 1/2" thick sediment high density polyethylene with a minimum 3/8" uniform wall thickness. Separator shall be furnished with a cover of 1/2" thick sediment high density polyethylene with a minimum 3/8" uniform wall thickness.

- OPTIONS**
- MPT - Male pipe threaded connections
 - F55 - 5/8" Pipe end pipe connections (No-Hub)
 - AK - Archrod Kit

Oil separator shall be a minimum 18" diameter and 12" high in polyethylene with a minimum 3/8" uniform wall thickness. Separator shall be furnished for above or below grade installation, with a 1-1/2" diameter inlet and outlet diffusers. The separator shall be furnished with a cover of 1/2" thick sediment high density polyethylene with a minimum 3/8" uniform wall thickness.



SCHLIER PRODUCTS
 5900 Woodland Road
 Houston, Texas 77055
 Fax: 800-827-9444
 www.schlierproducts.com
 Made in the USA

SPECIFICATION SHEET

DESCRIPTION:
 75 GPM, 62 GALLONS OIL STORAGE,
 125 GALLON LIQUID STORAGE CAPACITY,
 POLYETHYLENE OIL SEPARATOR

PART NUMBER: OS-75
 DATE: 5/7/08
 REV: 1-3/23/11

MAIL: HDPE
 DATE: 5/7/08
 REV: 1-3/23/11

DATE: 5/7/08
 REV: 1-3/23/11

DATE: 5/7/08
 REV: 1-3/23/11

DATE: 5/7/08
 REV: 1-3/23/11

DATE: 5/7/08
 REV: 1-3/23/11

DATE: 5/7/08
 REV: 1-3/23/11

DATE: 5/7/08
 REV: 1-3/23/11

DATE: 5/7/08
 REV: 1-3/23/11

DATE: 5/7/08
 REV: 1-3/23/11

DATE: 5/7/08
 REV: 1-3/23/11

DATE: 5/7/08
 REV: 1-3/23/11

DATE: 5/7/08
 REV: 1-3/23/11

DATE: 5/7/08
 REV: 1-3/23/11

DATE: 5/7/08
 REV: 1-3/23/11

DATE: 5/7/08
 REV: 1-3/23/11

DATE: 5/7/08
 REV: 1-3/23/11

DATE: 5/7/08
 REV: 1-3/23/11

DATE: 5/7/08
 REV: 1-3/23/11

DATE: 5/7/08
 REV: 1-3/23/11

DATE: 5/7/08
 REV: 1-3/23/11

DATE: 5/7/08
 REV: 1-3/23/11

DATE: 5/7/08
 REV: 1-3/23/11

DATE: 5/7/08
 REV: 1-3/23/11

DATE: 5/7/08
 REV: 1-3/23/11

DATE: 5/7/08
 REV: 1-3/23/11

DATE: 5/7/08
 REV: 1-3/23/11

DATE: 5/7/08
 REV: 1-3/23/11

DATE: 5/7/08
 REV: 1-3/23/11

DATE: 5/7/08
 REV: 1-3/23/11

DATE: 5/7/08
 REV: 1-3/23/11

DATE: 5/7/08
 REV: 1-3/23/11

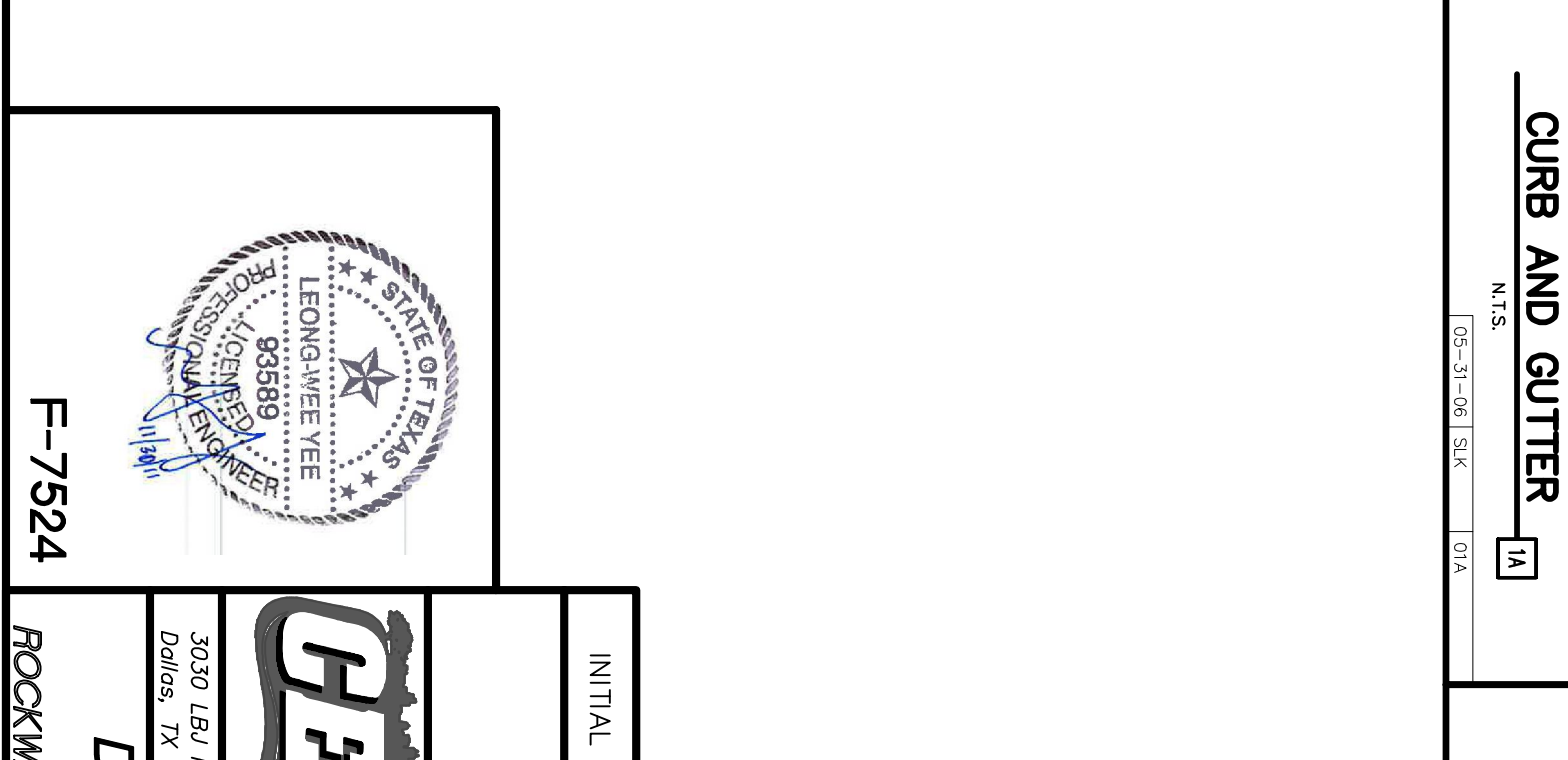
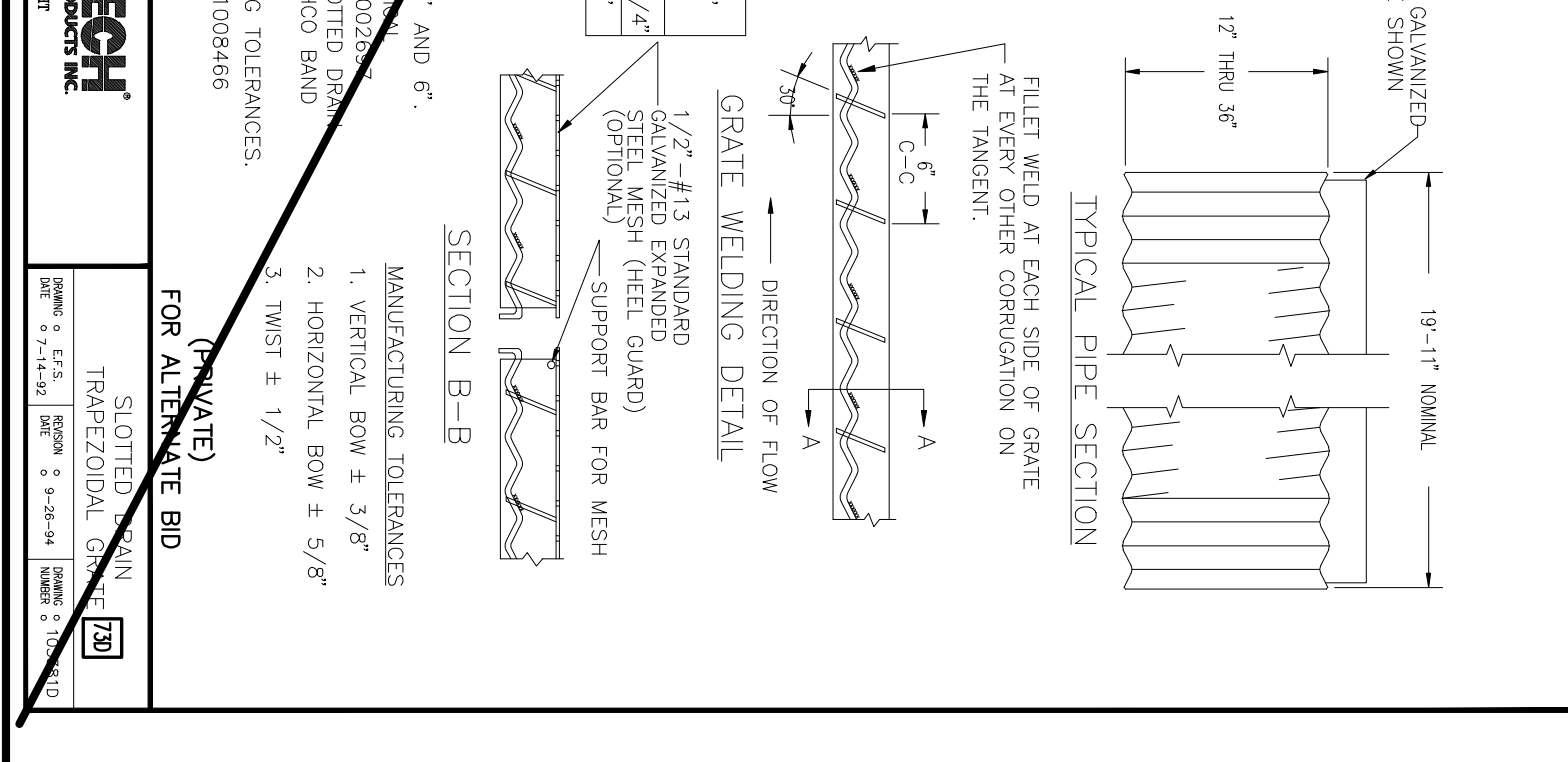
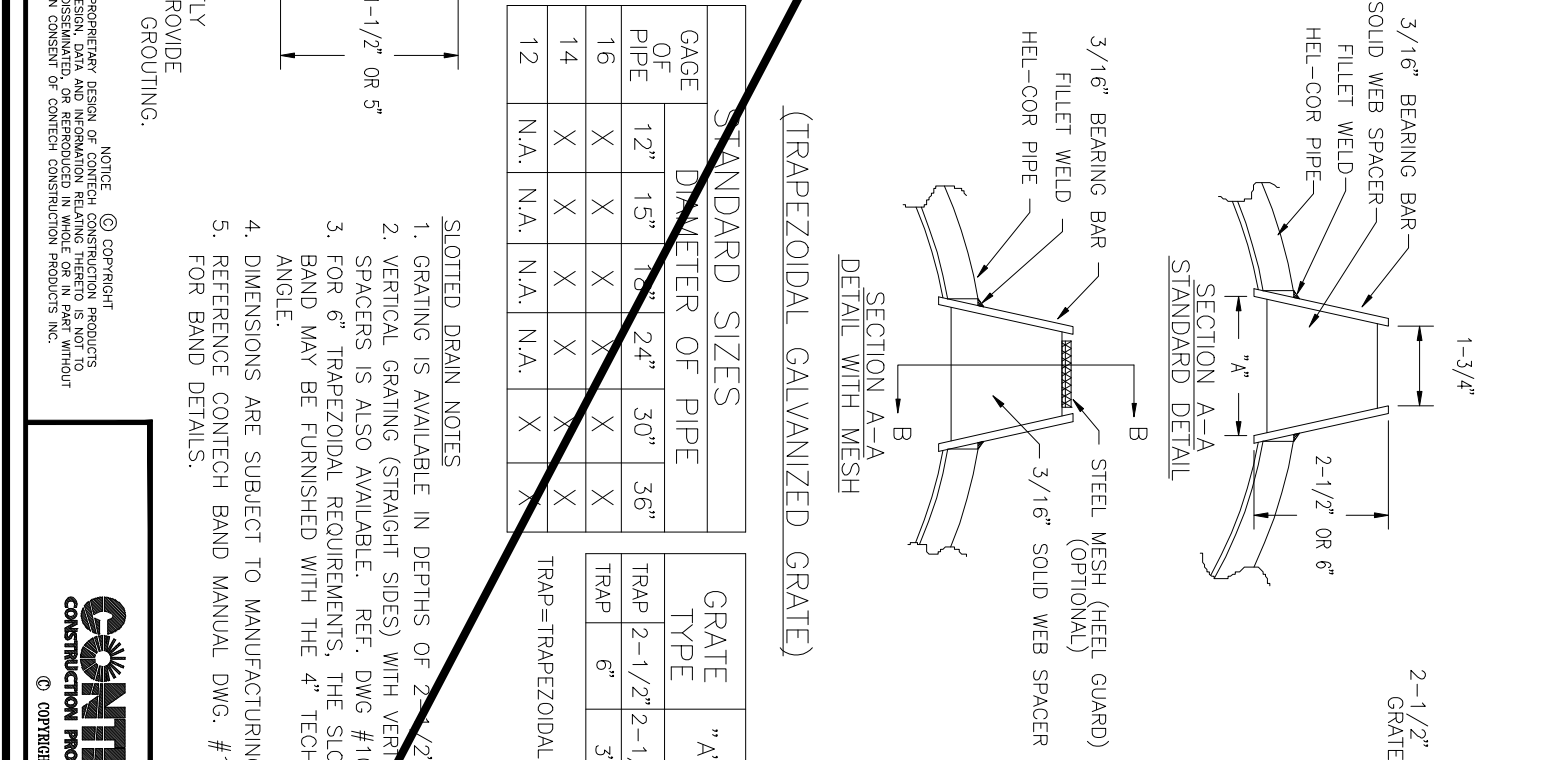
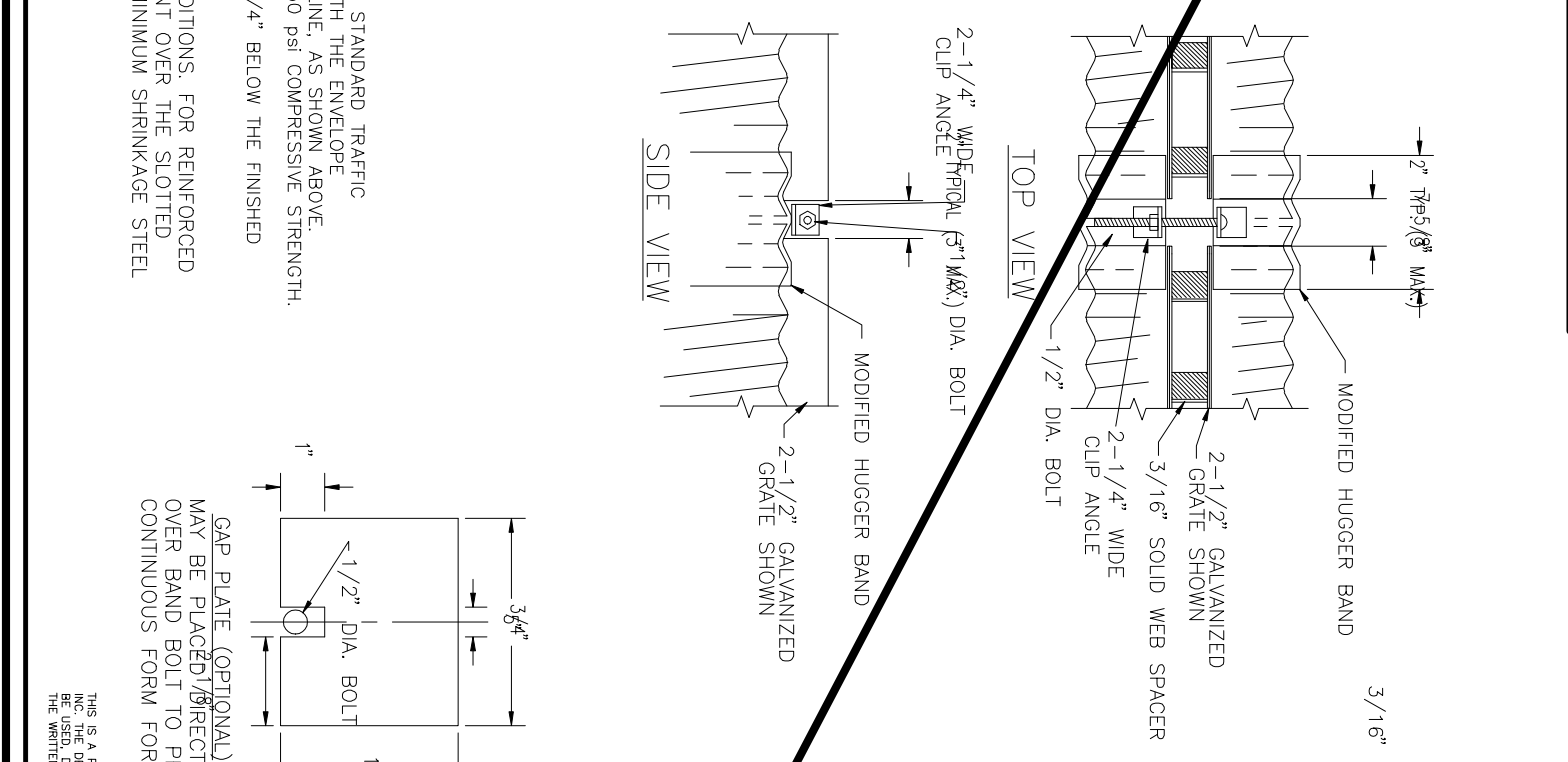
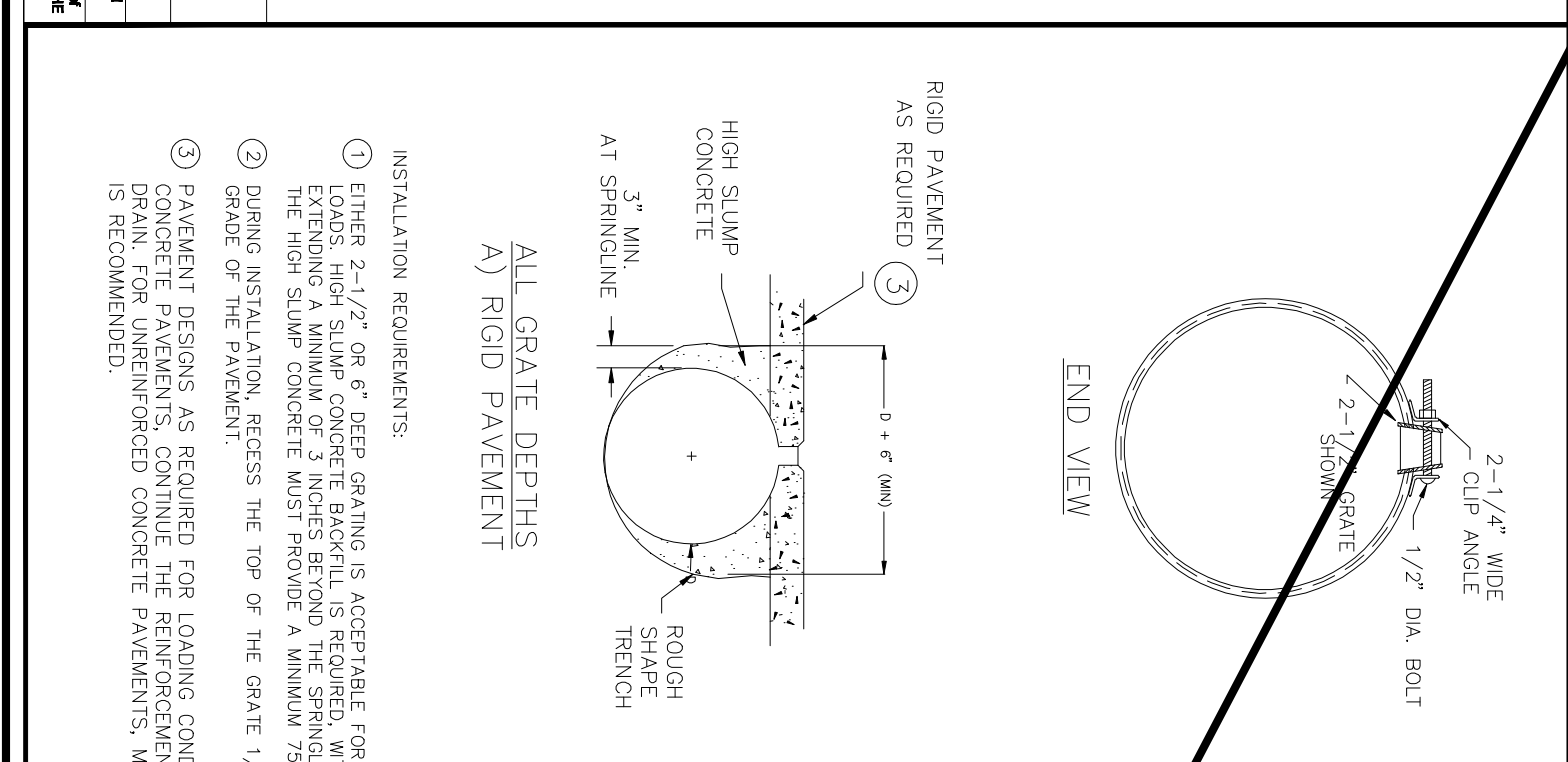
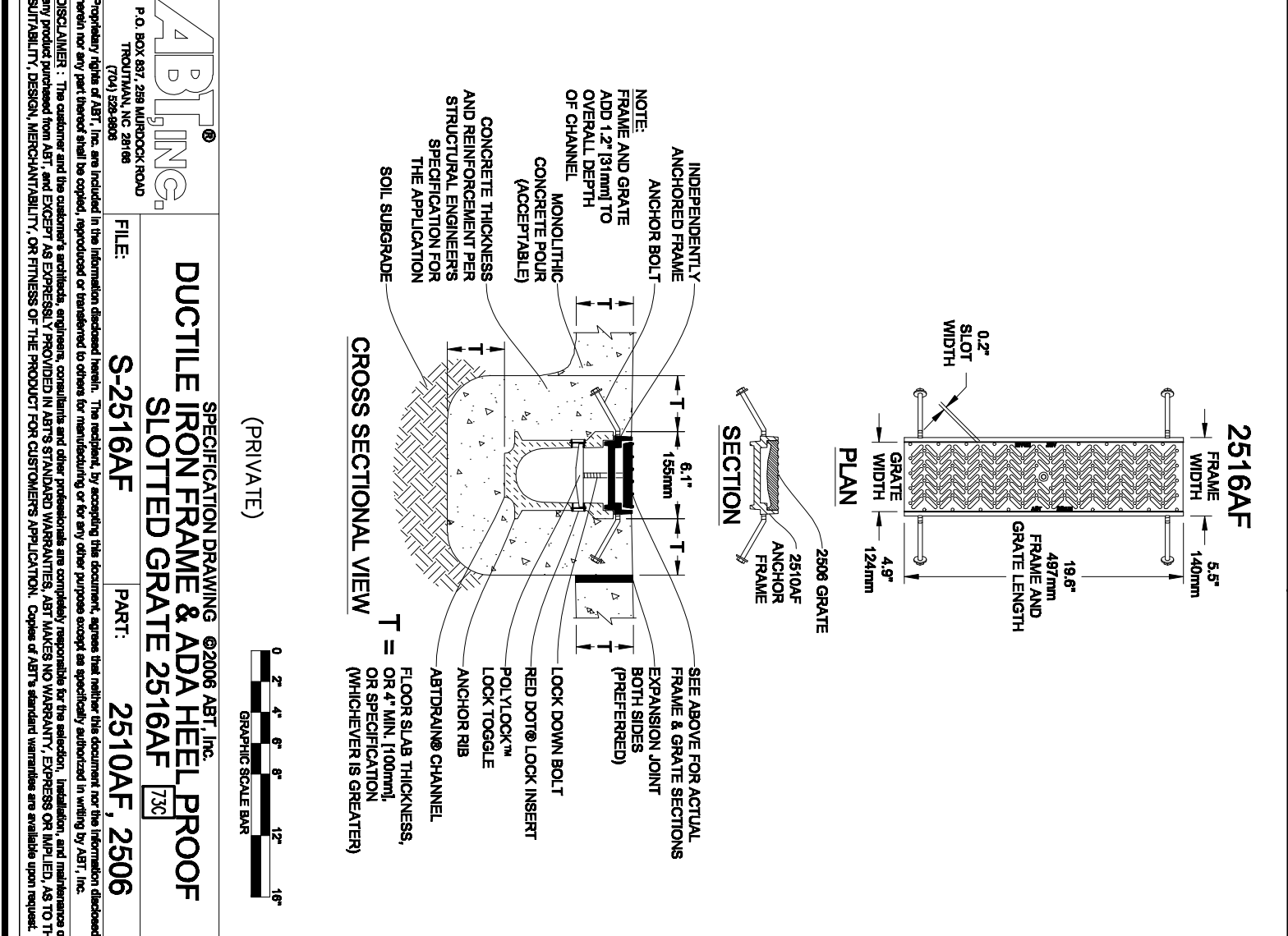
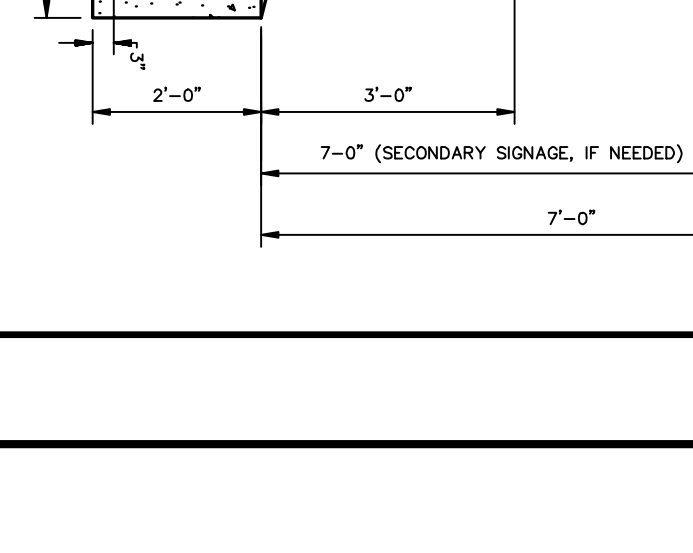
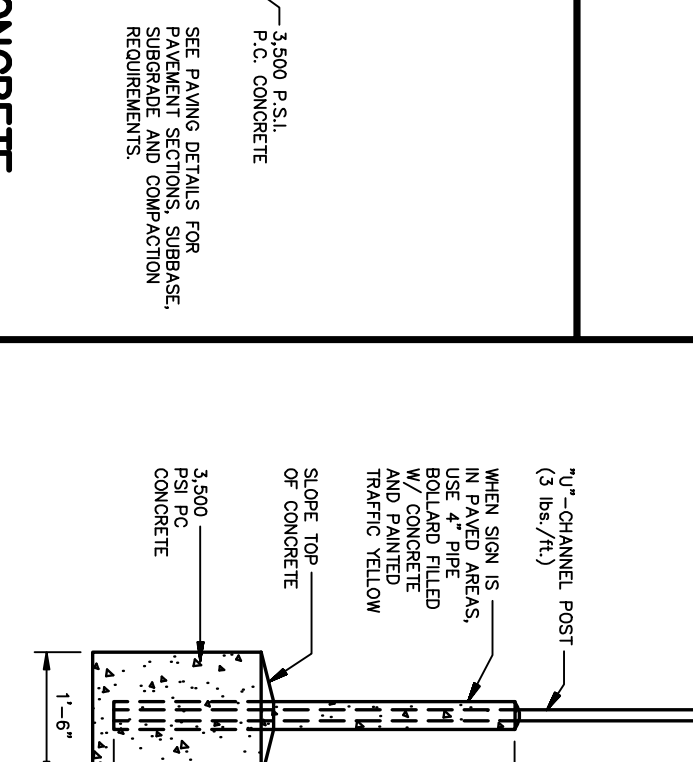
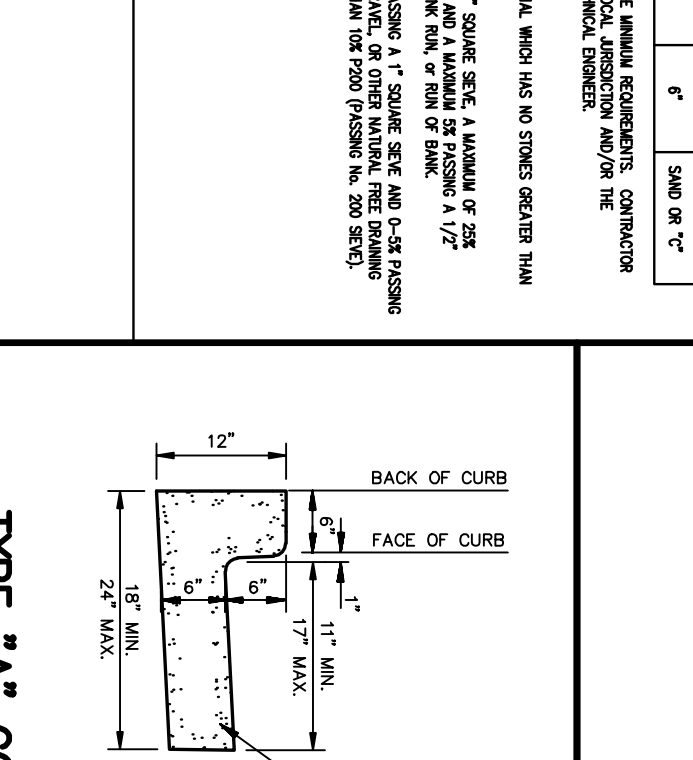
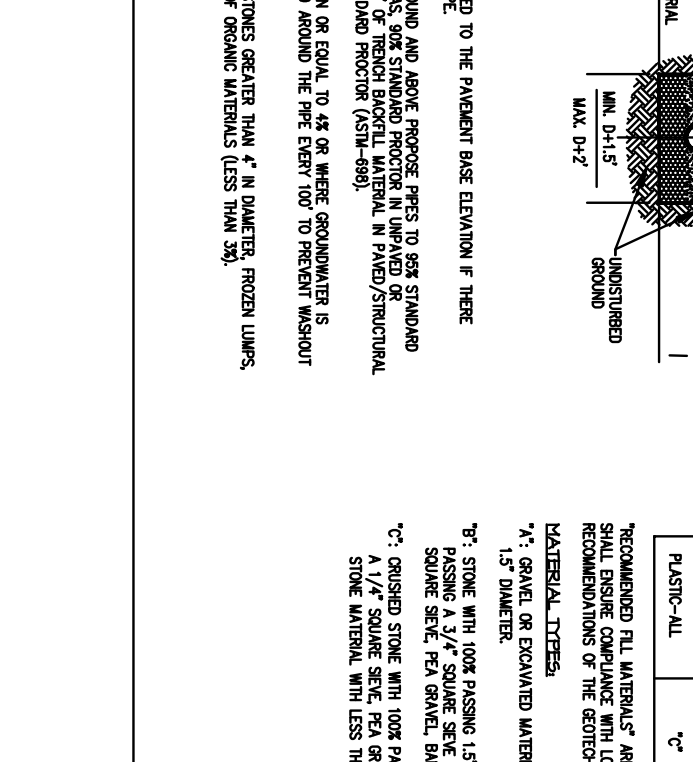
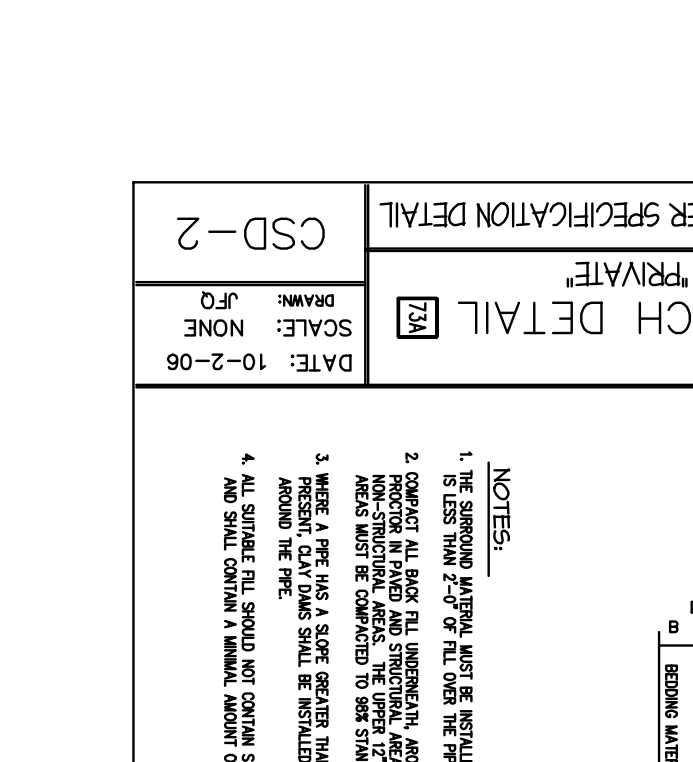
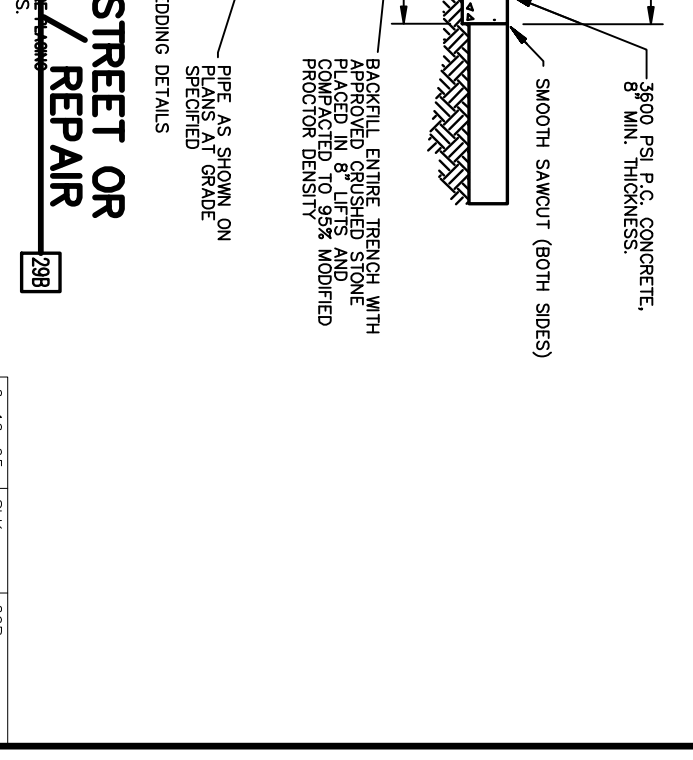
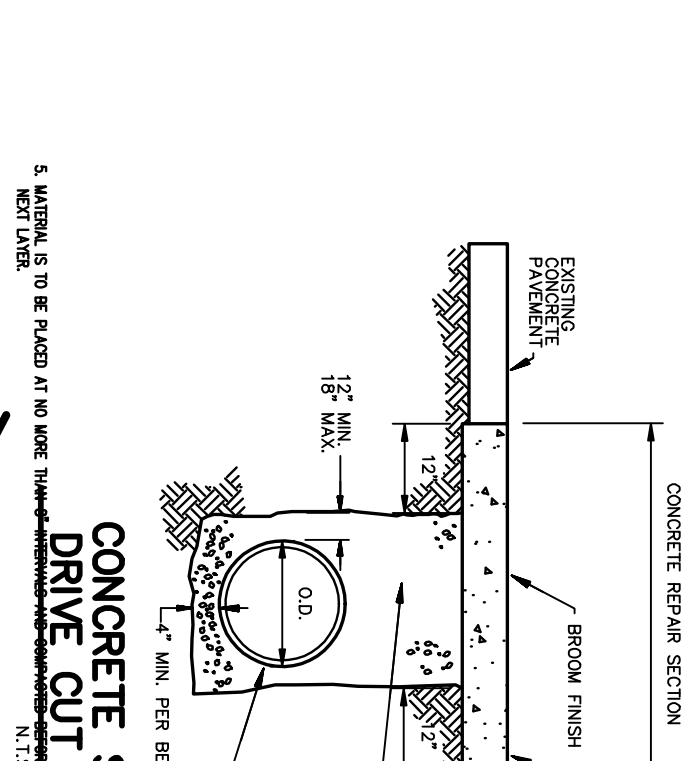
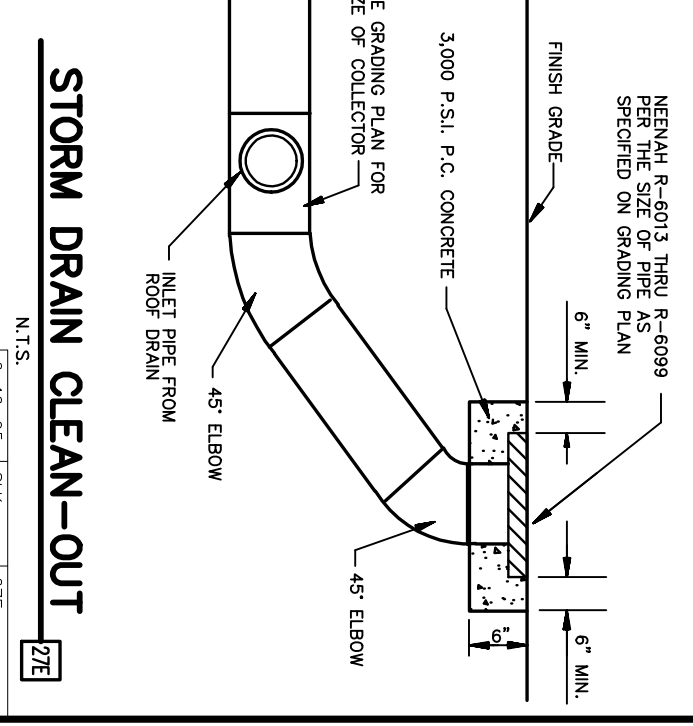
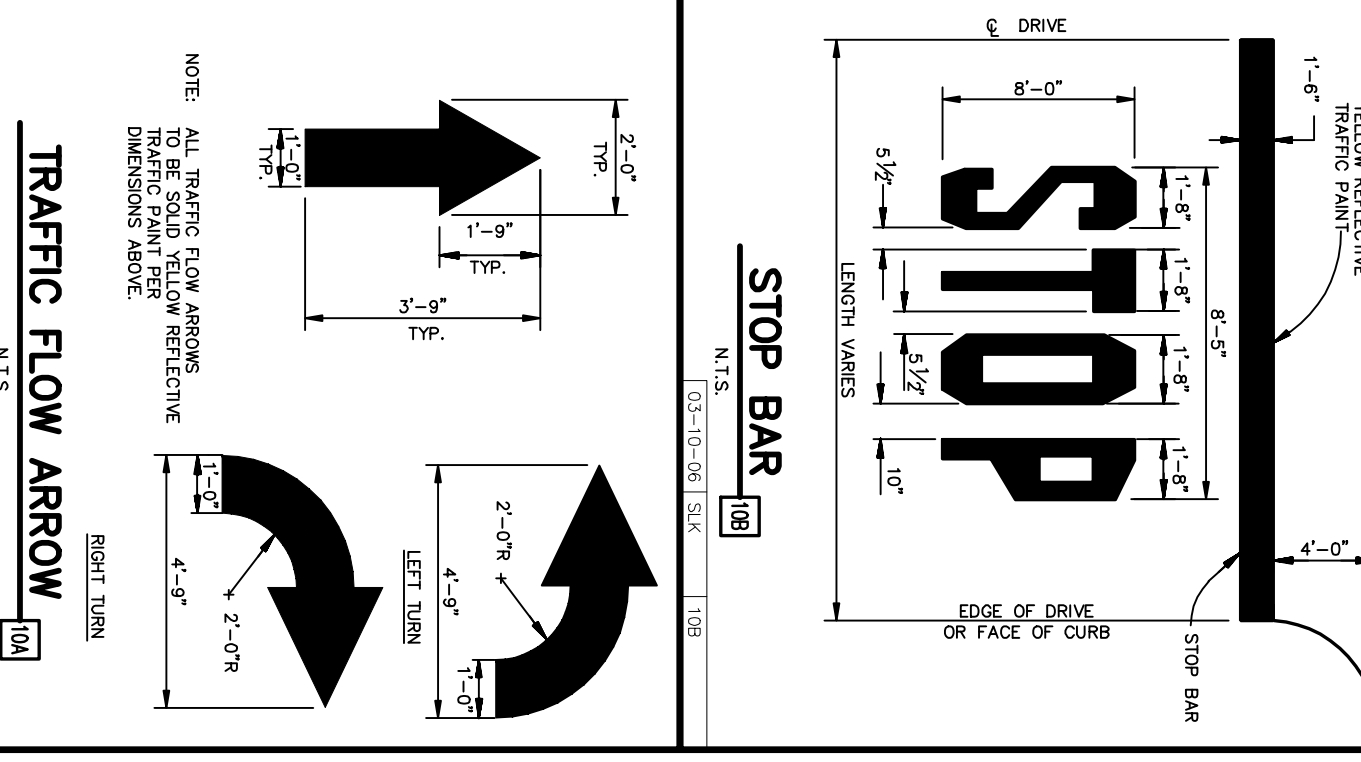
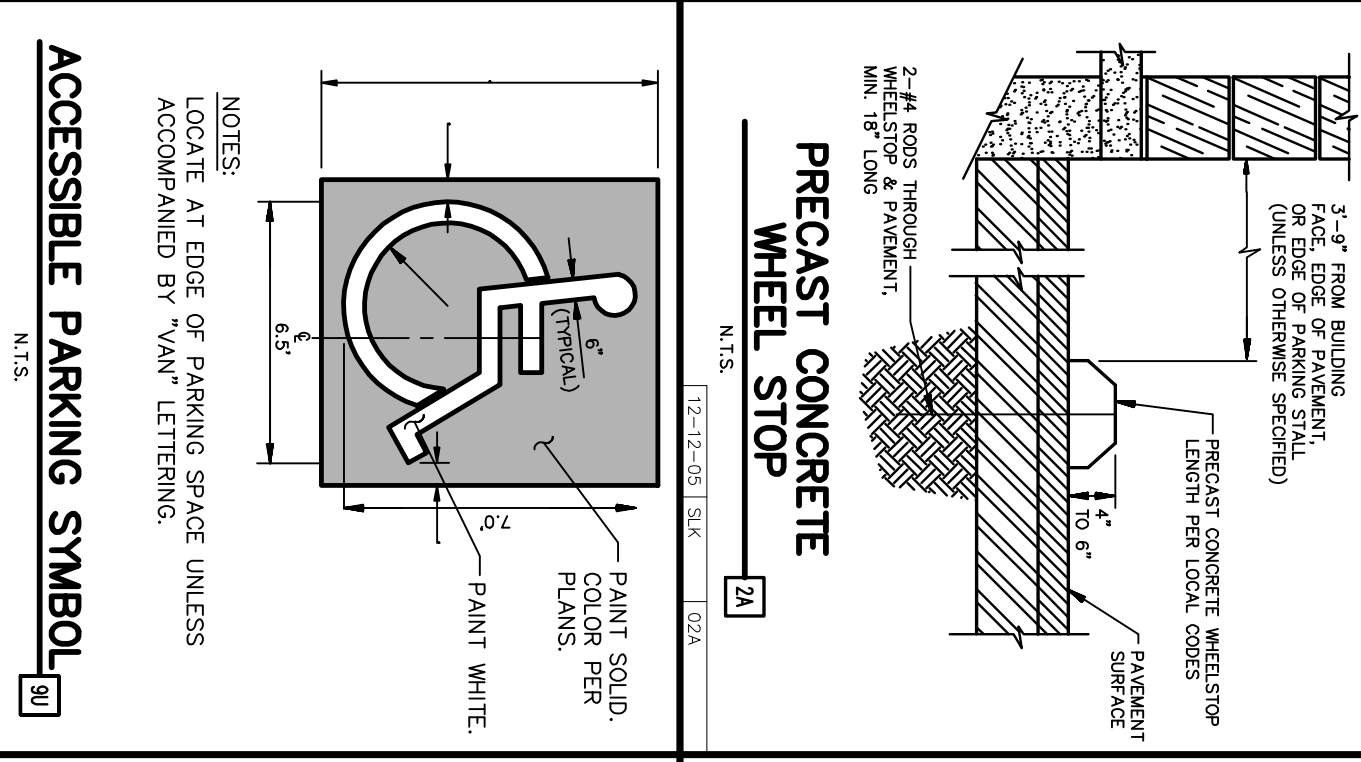
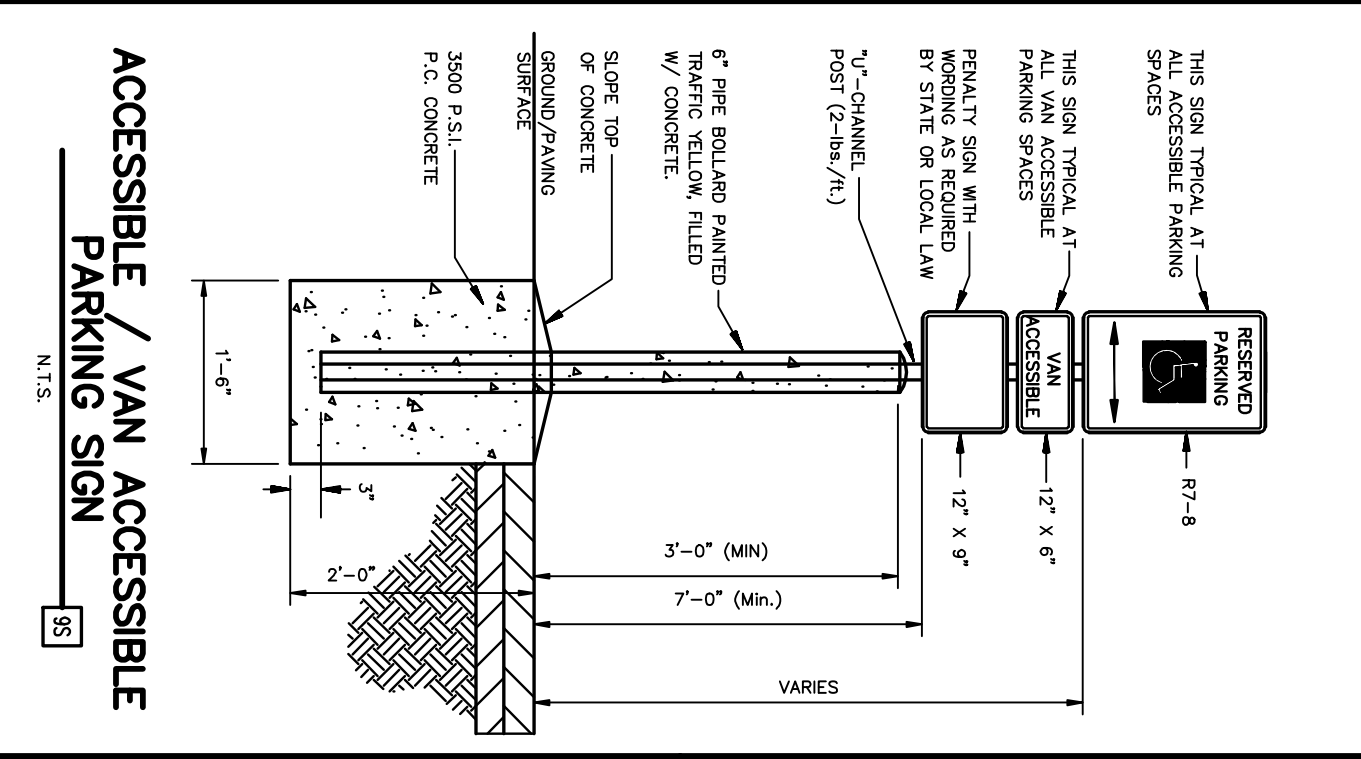
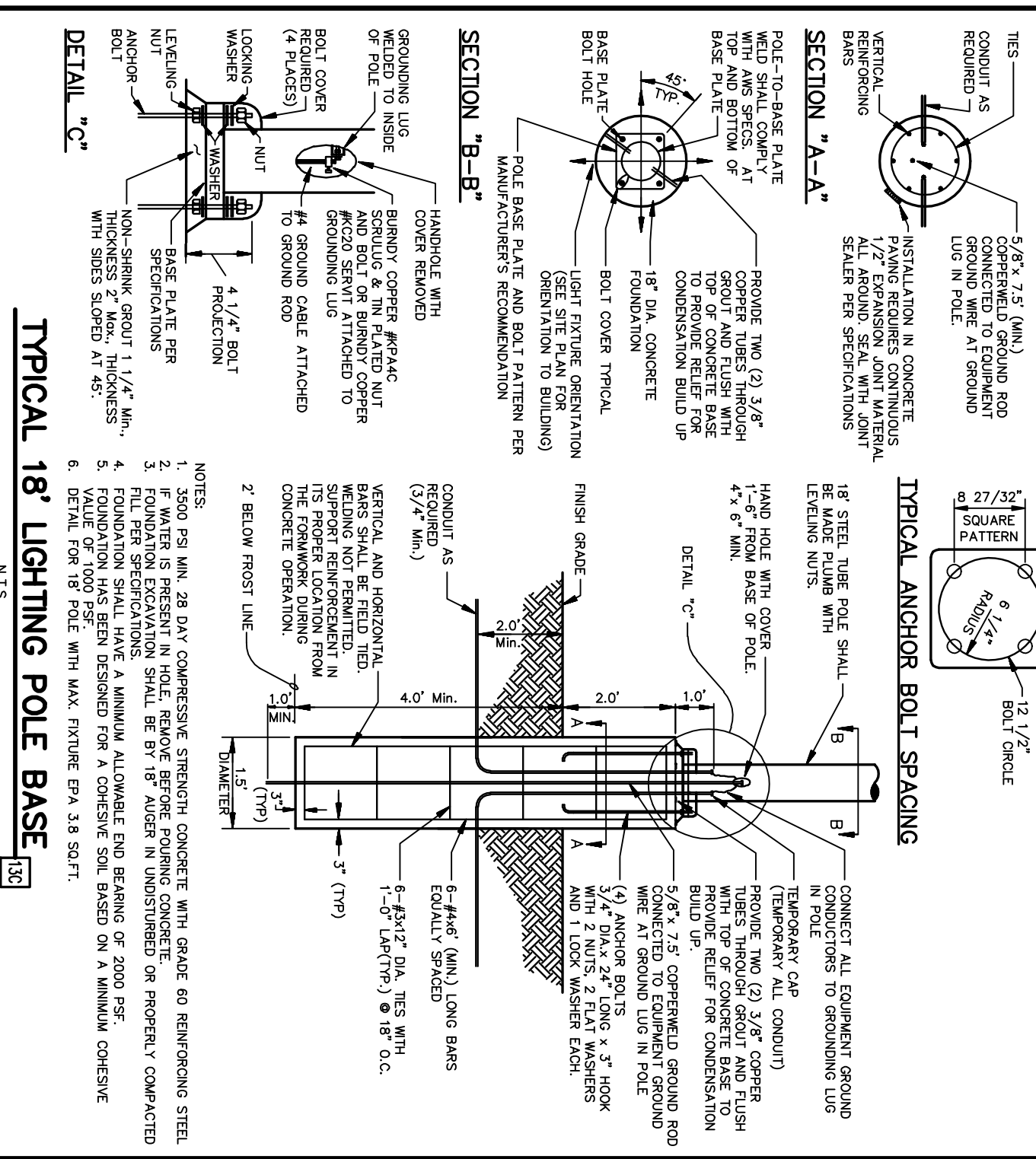
DATE: 5/7/08
 REV: 1-3/23/11

DATE: 5/7/08
 REV: 1-3/23/11

DATE: 5/7/08
 REV: 1-3/23/11

DATE: 5/7/08
 REV: 1-3/23/11

DATE: 5/7/08
 REV: 1-3/23/11



ABTONG
 2518AF
 S-2518AF PART 1
 S-2510AF-2506

ABTONG
 2518AF
 S-2518AF PART 1
 S-2510AF-2506

ABTONG
 2518AF
 S-2518AF PART 1
 S-2510AF-2506

ABTONG
 2518AF
 S-2518AF PART 1
 S-2510AF-2506

ABTONG
 2518AF
 S-2518AF PART 1
 S-2510AF-2506

ABTONG
 2518AF
 S-2518AF PART 1
 S-2510AF-2506

ABTONG
 2518AF
 S-2518AF PART 1
 S-2510AF-2506

ABTONG
 2518AF
 S-2518AF PART 1
 S-2510AF-2506

ABTONG
 2518AF
 S-2518AF PART 1
 S-2510AF-2506

ABTONG
 2518AF
 S-2518AF PART 1
 S-2510AF-2506

ABTONG
 2518AF
 S-2518AF PART 1
 S-2510AF-2506

ABTONG
 2518AF
 S-2518AF PART 1
 S-2510AF-2506

ABTONG
 2518AF
 S-2518AF PART 1
 S-2510AF-2506

ABTONG
 2518AF
 S-2518AF PART 1
 S-2510AF-2506

ABTONG
 2518AF
 S-2518AF PART 1
 S-2510AF-2506

ABTONG
 2518AF
 S-2518AF PART 1
 S-2510AF-2506

ABTONG
 2518AF
 S-2518AF PART 1
 S-2510AF-2506

ABTONG
 2518AF
 S-2518AF PART 1
 S-2510AF-2506

ABTONG
 2518AF
 S-2518AF PART 1
 S-2510AF-2506

ABTONG
 2518AF
 S-2518AF PART 1
 S-2510AF-2506

ABTONG
 2518AF
 S-2518AF PART 1
 S-2510AF-2506

ABTONG
 2518AF
 S-2518AF PART 1
 S-2510AF-2506

ABTONG
 2518AF
 S-2518AF PART 1
 S-2510AF-2506

ABTONG
 2518AF
 S-2518AF PART 1
 S-2510AF-2506

ABTONG
 2518AF
 S-2518AF PART 1
 S-2510AF-2506

ABTONG
 2518AF
 S-2518AF PART 1
 S-2510AF-2506

ABTONG
 2518AF
 S-2518AF PART 1
 S-2510AF-2506

ABTONG
 2518AF
 S-2518AF PART 1
 S-2510AF-2506

ABTONG
 2518AF
 S-2518AF PART 1
 S-2510AF-2506

ABTONG
 2518AF
 S-2518AF PART 1
 S-2510AF-2506

ABTONG
 2518AF
 S-2518AF PART 1
 S-2510AF-2506

ABTONG
 2518AF
 S-2518AF PART 1
 S-2510AF-2506

ABTONG
 2518AF
 S-2518AF PART 1
 S-2510AF-2506

ABTONG
 2518AF
 S-2518AF PART 1
 S-2510AF-2506

ABTONG
 2518AF
 S-2518AF PART 1
 S-2510AF-2506

ABTONG
 2518AF
 S-2518AF PART 1
 S-2510AF-2506

ABTONG
 2518AF
 S-2518AF PART 1
 S-2510AF-2506

ABTONG
 2518AF
 S-2518AF PART 1
 S-2510AF-2506

ABTONG
 2518AF
 S-2518AF PART 1
 S-2510AF-2506

ABTONG
 2518AF
 S-2518AF PART 1
 S-2510AF-2506

ABTONG
 2518AF
 S-2518AF PART 1
 S-2510AF-2506

ABTONG
 2518AF
 S-2518AF PART 1
 S-2510AF-2506

ABTONG
 2518AF
 S-2518AF PART 1
 S-2510AF-2506

ABTONG
 2518AF
 S-2518AF PART 1
 S-2510AF-2506

ABTONG
 2518AF
 S-2518AF PART 1
 S-2510AF-2506

ABTONG
 2518AF
 S-2518AF PART 1
 S-2510AF-2506

ABTONG
 2518AF
 S-2518AF PART 1
 S-2510AF-2506

ABTONG
 2518AF
 S-2518AF PART 1
 S-2510AF-2506

ABTONG
 2518AF
 S-2518AF PART 1
 S-2510AF-2506

ABTONG
 2518AF
 S-2518AF PART 1
 S-2510AF-2506

ABTONG
 2518AF
 S-2518AF PART 1
 S-2510AF-2506

ABTONG
 2518AF
 S-2518AF PART 1
 S-2510AF-2506

ABTONG
 2518AF
 S-2518AF PART 1
 S-2510AF-2506

ABTONG
 2518AF
 S-2518AF PART 1
 S-2510AF-2506

ABTONG
 2518AF
 S-2518AF PART 1
 S-2510AF-2506

ABTONG
 2518AF
 S-2518AF PART 1
 S-2510AF-2506

ABTONG
 2518AF
 S-2518AF PART 1
 S-2510AF-2506

ABTONG
 2518AF
 S-2518AF PART 1
 S-2510AF-2506

ABTONG
 2518AF
 S-2518AF PART 1
 S-2510AF-2506

ABTONG
 2518AF
 S-2518AF PART 1
 S-2510AF-2506

ABTONG
 2518AF
 S-2518AF PART 1
 S-2510AF-2506

ABTONG
 2518AF
 S-2518AF PART 1
 S-2510AF-2506

ABTONG
 2518AF
 S-2518AF PART 1
 S-2510AF-2506

ABTONG
 2518AF
 S-2518AF PART 1
 S-2510AF-2506

ABTONG
 2518AF
 S-2518AF PART 1
 S-2510AF-2506

ABTONG
 2518AF
 S-2518AF PART 1
 S-2510AF-2506

ABTONG
 2518AF
 S-2518AF PART 1
 S-2510AF-2506

ABTONG
 2518AF
 S-2518AF PART 1
 S-2510AF-2506

ABTONG
 2518AF
 S-2518AF PART 1
 S-2510AF-2506

ABTONG
 2518AF
 S-2518AF PART 1
 S-2510AF-2506

ABTONG
 2518AF
 S-2518AF PART 1
 S-2510AF-2506

ABTONG
 2518AF
 S-2518AF PART 1
 S-2510AF-2506

ABTONG
 2518AF
 S-2518AF PART 1
 S-2510AF-2506

ABTONG
 2518AF
 S-2518AF PART 1
 S-2510AF-2506

ABTONG
 2518AF
 S-2518AF PART 1
 S-2510AF-2506

ABTONG
 2518AF
 S-2518AF PART 1
 S-2510AF-2506

ABTONG
 2518AF
 S-2518AF PART 1
 S-2510AF-2506

ABTONG
 2518AF
 S-2518AF PART 1
 S-2510AF-2506

ABTONG
 2518AF
 S-2518AF PART 1
 S-2510AF-2506

ABTONG
 2518AF
 S-2518AF PART 1
 S-2510AF-2506

ABTONG
 2518AF
 S-2518AF PART 1
 S-2510AF-2506

ABTONG
 2518AF
 S-2518AF PART 1
 S-2510AF-2506

ABTONG
 2518AF
 S-2518AF PART 1
 S-2510AF-2506