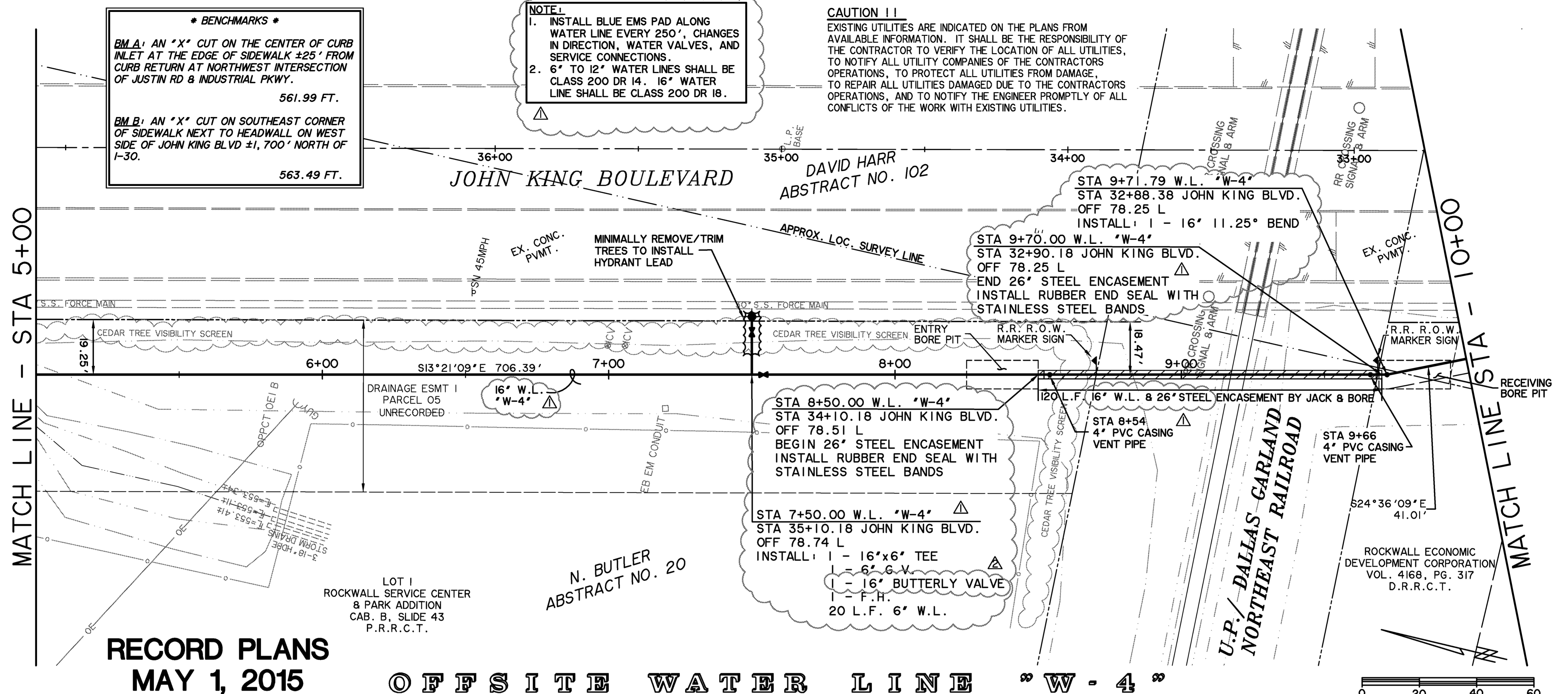
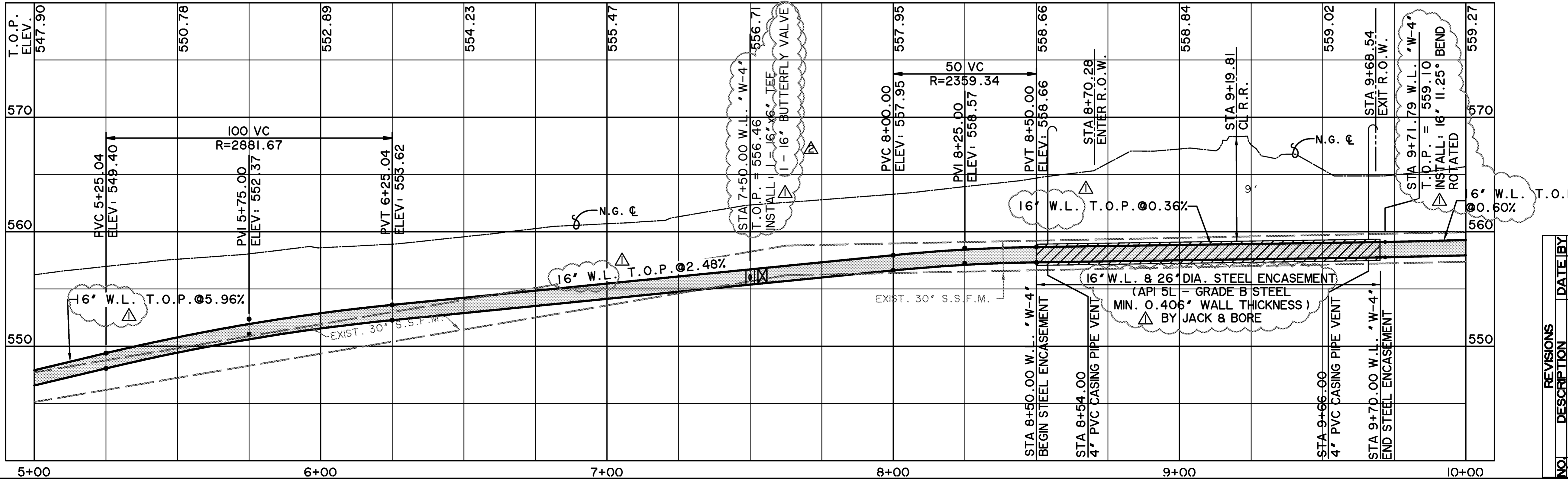


PRINTED: 5/1/2015 LAST SAVED: 4/21/2015 4:13 PM FILE: OFFSITE-WATER-PLAN-PROFILE-2-13096.DWG



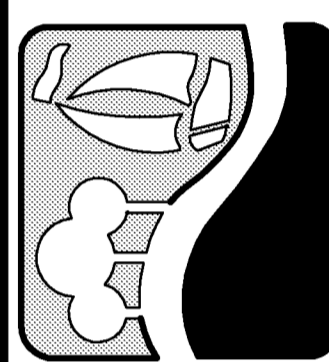
RECORD PLANS
MAY 1, 2015

OFFSITE WATER LINE "W-4"

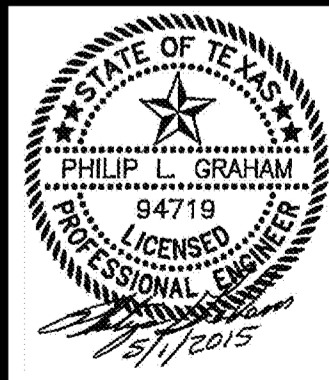


| NO. | REVISIONS | DESCRIPTION | DATE | BY |
|-----|-----------|------------------------------|---------|-----|
| 1 | CHANGED | WATER LINE FROM 12" TO 16" | 4/16/14 | PLG |
| 2 | CHANGED | 16" G.V. TO BUTTERFLY VALVES | 4/21/14 | PLG |

PREPARED BY:
WIER & ASSOCIATES, INC.
ENGINEERS SURVEYORS LAND PLANNERS
701 HIGHLANDER BLVD., SUITE 300 ARLINGTON, TEXAS 76015 METRO (817)467-7700
www.wierassociates.com
Texas Firm Registration No. F-2776



JOHN KING BOULEVARD
FROM AIRPORT ROAD
TO JUSTIN ROAD
OFFSITE WATER LINE "W-4"
PLAN & PROFILE
STA 5+00 TO 10+00



COPYRIGHT ©
WIER & ASSOCIATES, INC.
LAST SHEET EDIT
DATE 4/21/2015
WA# 13096
SHEET NO.
U102