

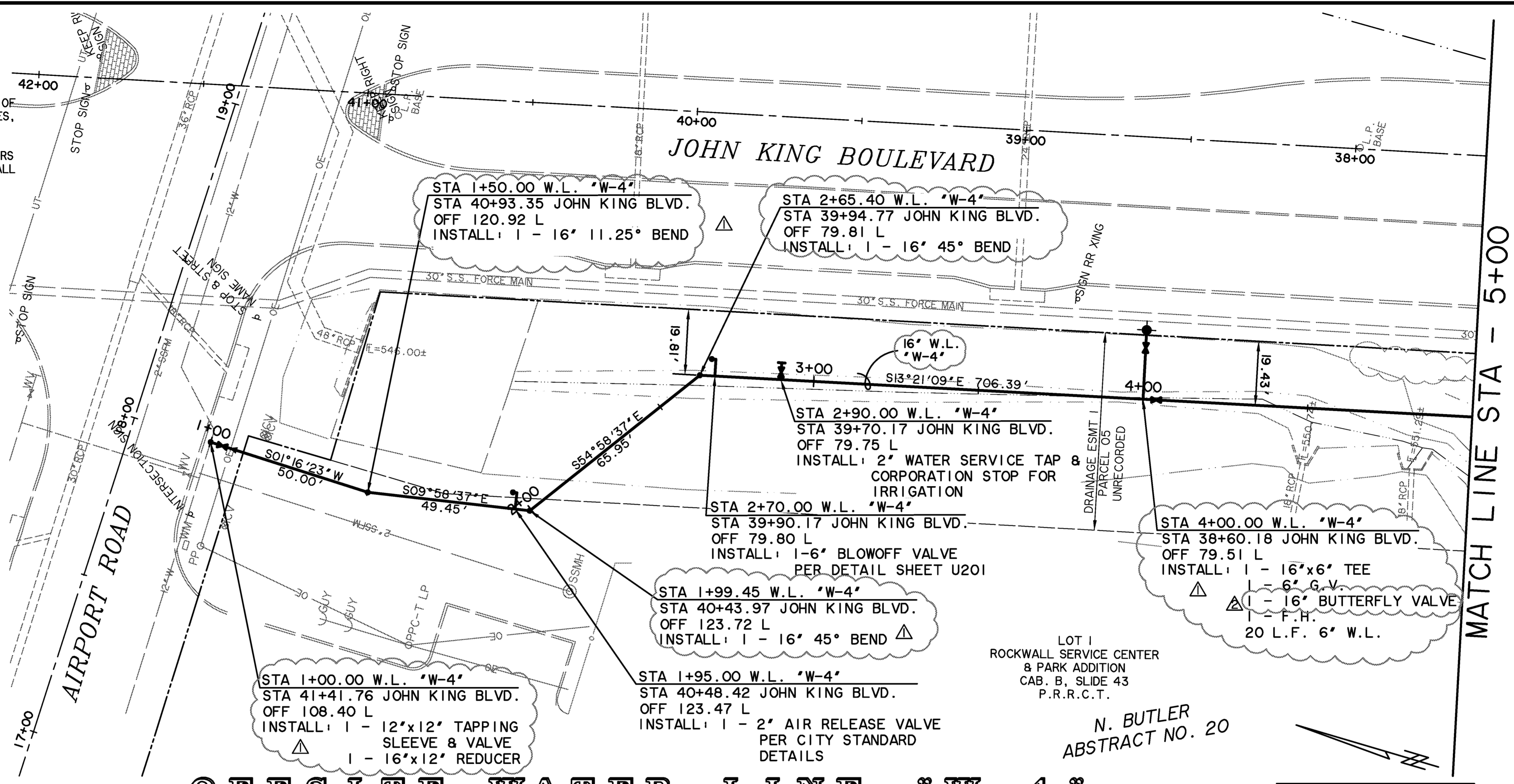
PRINTED: 5/1/2015 LAST SAVED: 4/21/2015 4:12 PM. FILE: OFFSITE-WATER-PLAN-PROFILE-I-13096.DWG

CAUTION !!
 EXISTING UTILITIES ARE INDICATED ON THE PLANS FROM AVAILABLE INFORMATION. IT SHALL BE THE RESPONSIBILITY OF THE CONTRACTOR TO VERIFY THE LOCATION OF ALL UTILITIES, TO NOTIFY ALL UTILITY COMPANIES OF THE CONTRACTORS OPERATIONS, TO PROTECT ALL UTILITIES FROM DAMAGE, TO REPAIR ALL UTILITIES DAMAGED DUE TO THE CONTRACTORS OPERATIONS, AND TO NOTIFY THE ENGINEER PROMPTLY OF ALL CONFLICTS OF THE WORK WITH EXISTING UTILITIES.

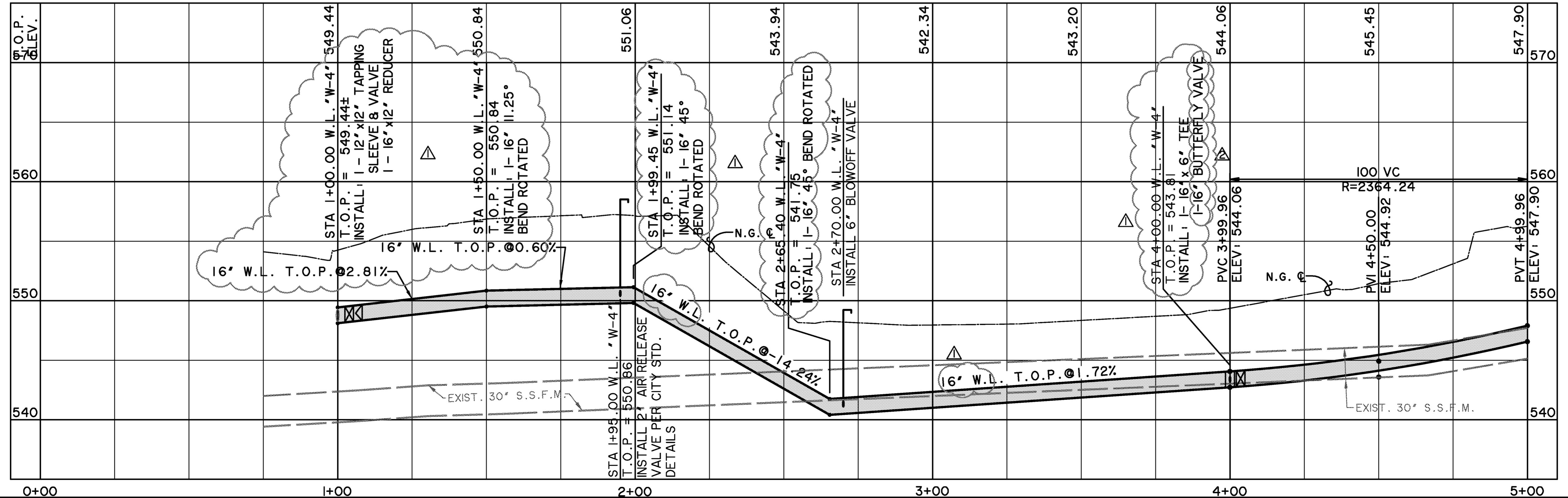
*** BENCHMARKS ***
BM.A: AN "X" CUT ON THE CENTER OF CURB INLET AT THE EDGE OF SIDEWALK ±25' FROM CURB RETURN AT NORTHWEST INTERSECTION OF JUSTIN RD & INDUSTRIAL PKWY.
 561.99 FT.
BM.B: AN "X" CUT ON SOUTHEAST CORNER OF SIDEWALK NEXT TO HEADWALL ON WEST SIDE OF JOHN KING BLVD ±1,700' NORTH OF I-30.
 563.49 FT.

NOTE:
 1. INSTALL BLUE EMS PAD ALONG WATER LINE EVERY 250', CHANGES IN DIRECTION, WATER VALVES, AND SERVICE CONNECTIONS.
 2. 6" TO 12" WATER LINES SHALL BE CLASS 200 DR 14. 16" WATER LINE SHALL BE CLASS 200 DR 18.

**RECORD PLANS
 MAY 1, 2015**

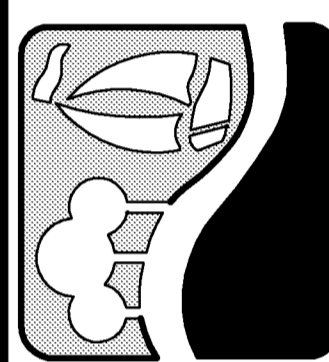


OFFSITE WATER LINE "W-4"

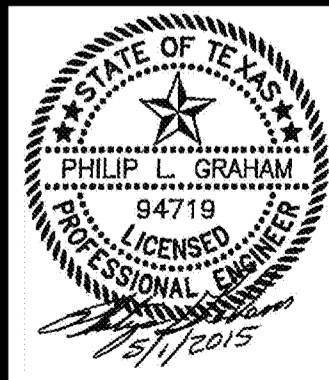


NO.	DESCRIPTION	DATE/BY
1	CHANGED WATER LINE FROM 12" TO 16"	4/16/14 PLG
2	CHANGED 16" G.V. TO BUTTERFLY VALVES	4/21/14 PLG

PREPARED BY:
WIER & ASSOCIATES, INC.
 ENGINEERS SURVEYORS LAND PLANNERS
 701 HIGHLANDER BLVD., SUITE 300 ARLINGTON, TEXAS 76015 METRO (817)467-7700
 Texas Firm Registration No. F-2776 www.wierassociates.com



**JOHN KING BOULEVARD
 FROM AIRPORT ROAD
 TO JUSTIN ROAD
 OFFSITE WATER LINE "W-4"
 PLAN & PROFILE
 BEGINNING TO STA 5+00**



COPYRIGHT ©
 WIER & ASSOCIATES, INC.
 LAST SHEET TOTAL
 DATE 4/21/2015
 WA# 13096
**SHEET NO.
 U101**