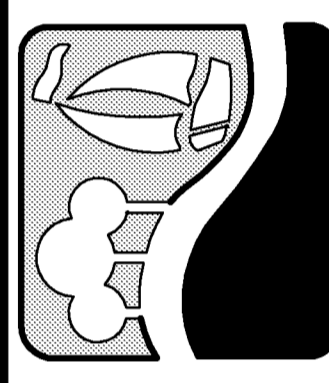


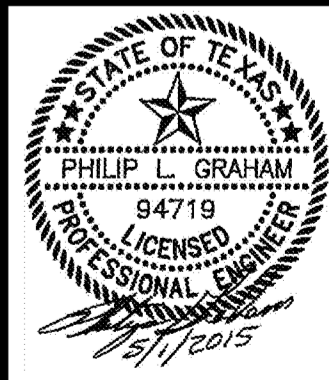
PRINTED: 5/1/2015 LAST SAVED: 4/21/2015 4:16 PM. FILE: OFFSITE-WATER-PLAN-PROFILE-3-13096.DWG

RECORD PLANS
MAY 1, 2015

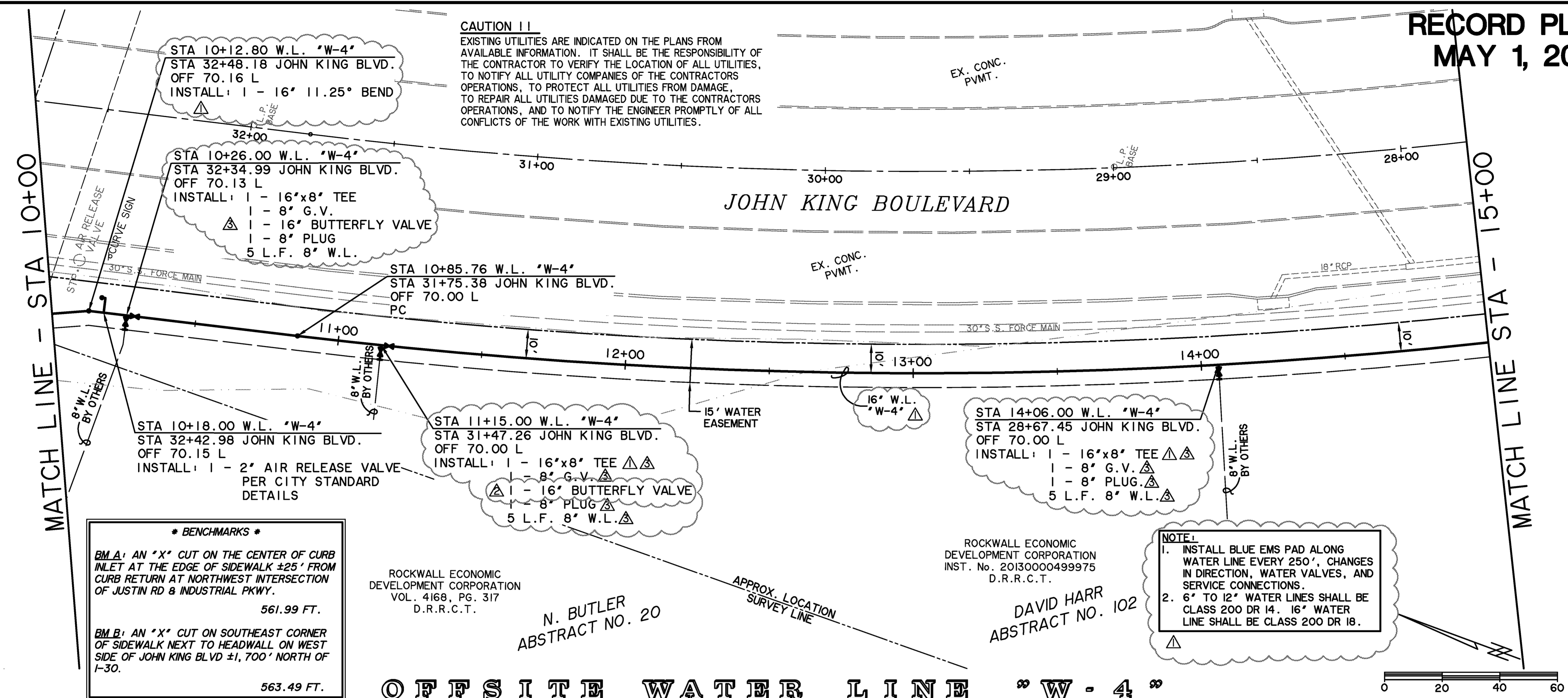
PREPARED BY:
WIER & ASSOCIATES, INC.
ENGINEERS SURVEYORS LAND PLANNERS
701 HIGHLANDER BLVD., SUITE 300 ARLINGTON, TEXAS 76015 METRO (817)467-7700
www.wierassociates.com
Texas Firm Registration No. F-2776



JOHN KING BOULEVARD
FROM AIRPORT ROAD
TO JUSTIN ROAD
OFFSITE WATER LINE "W-4"
PLAN & PROFILE
STA 10+00 TO 15+00



COPYRIGHT ©
WIER & ASSOCIATES, INC.
LAST SHEET TOTAL
DATE 4/21/2015
WA# 13096
SHEET NO.
U103



*** BENCHMARKS ***
B.M.A: AN "X" CUT ON THE CENTER OF CURB INLET AT THE EDGE OF SIDEWALK ±25' FROM CURB RETURN AT NORTHWEST INTERSECTION OF JUSTIN RD & INDUSTRIAL PKWY.
561.99 FT.
B.M.B: AN "X" CUT ON SOUTHEAST CORNER OF SIDEWALK NEXT TO HEADWALL ON WEST SIDE OF JOHN KING BLVD ±1,700' NORTH OF I-30.
563.49 FT.

ROCKWALL ECONOMIC DEVELOPMENT CORPORATION
VOL. 4168, PG. 317
D.R.R.C.T.

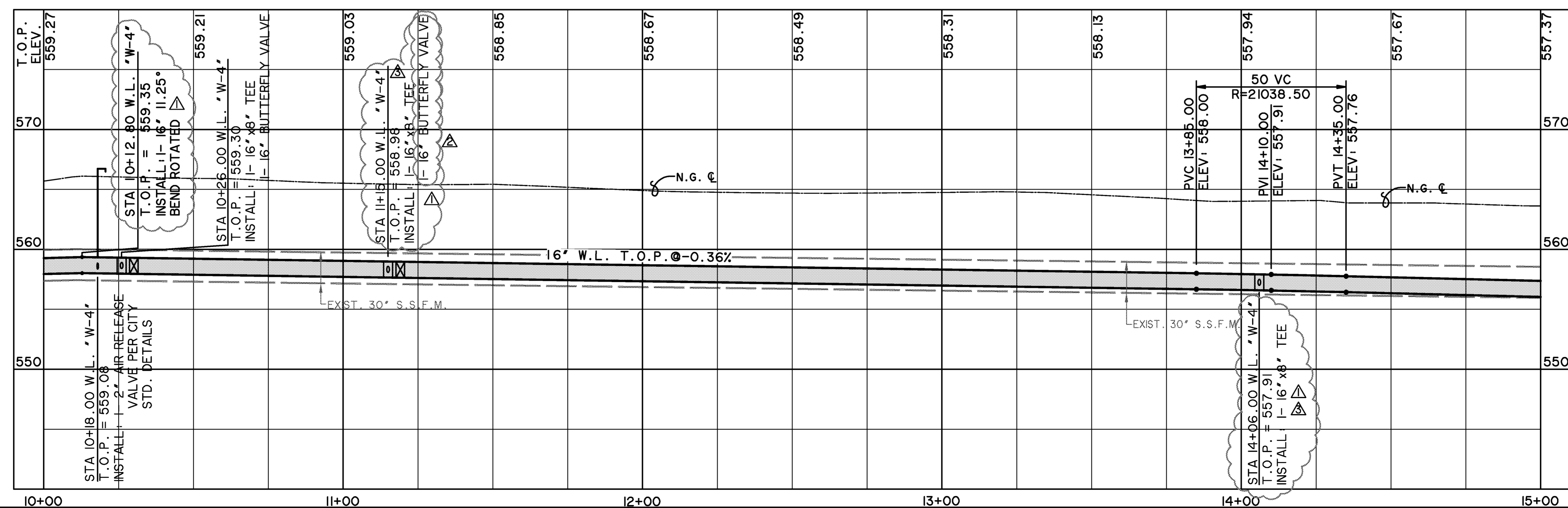
N. BUTLER ABSTRACT NO. 20

ROCKWALL ECONOMIC DEVELOPMENT CORPORATION
INST. No. 20130000499975
D.R.R.C.T.

DAVID HARR ABSTRACT NO. 102

NOTE:
1. INSTALL BLUE EMS PAD ALONG WATER LINE EVERY 250', CHANGES IN DIRECTION, WATER VALVES, AND SERVICE CONNECTIONS.
2. 6" TO 12" WATER LINES SHALL BE CLASS 200 DR 14. 16" WATER LINE SHALL BE CLASS 200 DR 18.

OFFSITE WATER LINE "W-4"



NO.	DESCRIPTION	DATE	BY
1	CHANGED WATER LINE FROM 12" TO 16"	4/16/14	PLG
2	CHANGED 16" G.V. TO BUTTERFLY VALVE	4/21/14	PLG
3	CHANGED 8" AIR RELEASE VALVE TO 2" PER CITY	8/13/14	PLG
4	CHANGED 8" AIR RELEASE VALVE TO 2" PER CITY	8/13/14	PLG