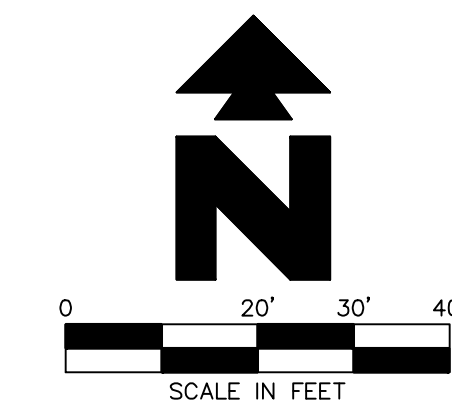
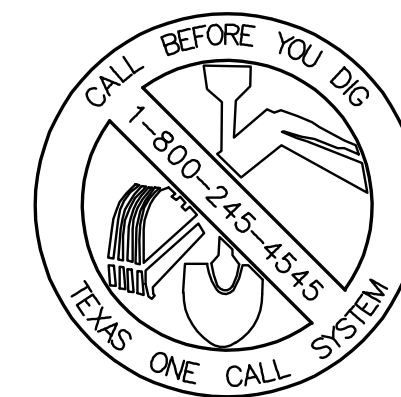


SPRINKLER NOZZLE LIST

QTY.	KEY	DESCRIPTION
61	B	1804-SAM-PRS-12 MPR @ 30 PSI

IRRIGATION DETAILS

SYMBOL	DETAIL	MANUFACTURE/MODEL/DESCRIPTION
•	60A	SPRAY HEAD. SEE NOZZLE LIST FOR HEAD AND NOZZLE DESCRIPTION.
—	61A	WIRE CONNECTION. NOT SHOWN ON PLANS.
●	61E	MASTER VALVE: RAINBIRD PEB-100 (1") • VALVE BOXES: 12" STANDARD-SIZE, SPECIFICATION GRADE, UV-RESISTANT PLASTIC VALVE BOX (2 VALVES PER BOX MAXIMUM). • USE GREEN BOX LIDS FOR TURF AND GROUNDCOVER-PLANTED AREAS AND TAN FOR EXPOSED ROCK AREAS. • LOCATE VALVES AT LEAST 18" AWAY FROM FACE OF CURB AND AVOID PLACEMENT AT OR PAST CURB RADIUS ALONG VEHICULAR ROUTES. • VALVE TAGS: T. CHRISTY ENTERPRISE'S STANDARD-SIZE, SINGLE SIDED, YELLOW IRRIGATION IDENTIFICATION TAGS MODEL NO. ID-STD-Y1.
●	61F	ZONE VALVE: RAINBIRD PEB-100 (1") • VALVE BOXES: 12" STANDARD-SIZE, SPECIFICATION GRADE, UV-RESISTANT PLASTIC VALVE BOX (2 VALVES PER BOX MAXIMUM). • USE GREEN BOX LIDS FOR TURF AND GROUNDCOVER-PLANTED AREAS AND TAN FOR EXPOSED ROCK AREAS. • LOCATE VALVES AT LEAST 18" AWAY FROM FACE OF CURB AND AVOID PLACEMENT AT OR PAST CURB RADIUS ALONG VEHICULAR ROUTES. • VALVE TAGS: T. CHRISTY ENTERPRISE'S STANDARD-SIZE, SINGLE SIDED, YELLOW IRRIGATION IDENTIFICATION TAGS MODEL NO. ID-STD-Y1.
—	62C	MANUAL DRAIN VALVE. NOT SHOWN ON PLANS.
—	64A	PIPE AND WIRE TRENCHING. NOT SHOWN ON PLANS.
□	78A	CONTROLLER: ET WATER SYSTEMS, LLC SMART CONTROLLER, MODEL NO. 205T CONTROLLER PEDESTAL: STRONGBOX HEAVY-DUTY, STAINLESS STEEL, TOP-ENTRY ENCLOSURE, MODEL NO. SB-16SS CONTROLLER MOUNTING PAD: STRONGBOX QUICKPAD ENCLOSURE MOUNTING PAD WITH SUPPORT BASE, MODEL NO. QP-16.
○	78B	RAIN SENSOR: HUNTER INDUSTRIES MINI-CLICK SENSOR ASSEMBLY. FREEZE SENSOR: HUNTER INDUSTRIES FREEZE-CLICK SENSOR.
○	78C	FLOW SENSOR: CREATIVE SENSOR TECHNOLOGIES, INC. 1-1/2" FLOW SENSOR, MODEL NO. FST-T15-001 • RUN CONTINUOUS FLOW SENSOR WIRE FROM FLOW SENSOR TERMINAL, THROUGH DEDICATED FLOW SENSOR CONDUIT BACK TO IRRIGATION CONTROLLER PEDESTAL. • FLOW SENSOR CABLE: TWO-STRAND, SHIELD CABLE P-7162D. LOCATE INSIDE A 3/4" PVC CONDUIT.
◀	78D	REDUCED PRESSURE BACKFLOW PREVENTION ASSEMBLY: WATTS SERIES 009 OR 919 WITH VERTICALLY-ORIENTED BALL-TYPE ISOLATION VALVE.
□	78E	ENCLOSURE: LOCKABLE, PAD-MOUNTED FIBERGLASS ENCLOSURE, HOTBOX INC. SERIES OR EQUAL. LOCKBOX SERIES OR EQUAL FOR AREAS WITH ANNUAL FREEZES.
●	78E	DRIP VALVE ASSEMBLY: RAINBIRD XCZ-100-B-COM VALVE BOXES: 12" STANDARD-SIZE, SPECIFICATION GRADE, UV-RESISTANT PLASTIC VALVE BOX (2 VALVES PER BOX MAXIMUM). • USE GREEN BOX LIDS FOR TURF AND GROUNDCOVER-PLANTED AREAS AND TAN FOR EXPOSED ROCK AREAS. • LOCATE VALVES AT LEAST 18" AWAY FROM FACE OF CURB AND AVOID PLACEMENT AT OR PAST CURB RADIUS ALONG VEHICULAR ROUTES. • VALVE TAGS: T. CHRISTY ENTERPRISE'S STANDARD-SIZE, SINGLE SIDED, YELLOW IRRIGATION IDENTIFICATION TAGS MODEL NO. ID-STD-Y1.
▼	78F	BOWSMITH MULTI-OUTLET 200 SERIES DRIP EMITTER (ML200) IN A 6" DIA. ROUND VALVE BOX INSTALLED 3" FROM TREE TRUNK. INSTALL 1 PER TREES. • LARGE TREE= 12 GPH TOTAL • ORNAMENTAL TREE= 6 GPH TOTAL • PALM TREE= 6 GPH TOTAL
—	78G	SUBSURFACE DRIP IRRIGATION: NETAfim TECHLINE CV DRIPLENE WITH INTEGRAL PRESSURE-COMPENSATING, SELF-CLEANING, ANTI-SIPHON CHECK VALVE. • BURIED 2" MINIMUM-6" MAXIMUM DEPTH. • EMITTER OUTPUT (GPH): 0.4 GPH • ON CENTER SPACING: 18" • DRIPLENE SPACING: 18"
□	78K	FERTILIZER INJECTOR: EZ-FLO SYSTEM MAINLINE/COUPLER INSTALLATION. LOCATE UNIT AFTER THE HYDROMETER ON A BY-PASS LOOP OFF THE MAINLINE. • MODEL # E2001-CX



LEGEND

EXISTING		LEGEND	
○	LIGHT POLE - 1 IN LINE LAMP	CM	CONTROLLING MONUMENT
○	MONITORING WELL	E	EAST
○	PK NAIL SET	N	NORTH
○	PK NAIL FOUND	S	SOUTH
○	PARKING SPACE COUNT	W	WEST
—	BILLBOARD/PYLON	---	BOUNDARY LINE
—	RISER TRAFFIC SIGNAL SIGN	---	NATURAL GAS
—	SEWER MANHOLE	---	SANITARY SEWER LINES
—	SIGN-TELEPHONE WARNING	---	WATER LINES
—	TRAFFIC SIGNAL	---	OVERHEAD ELECTRIC
—	UTILITY POLE	---	"X" CUT
—	WATER METER	---	DRAINAGE MANHOLE
—	WATER VALVE	---	VAULT ELECTRIC
—	DEED RECORDS COLLIN COUNTY, TEXAS	---	FIRE HYDRANT
—	PLAT RECORDS COLLIN COUNTY, TEXAS	---	SIGN-FIBER OPTIC WARNING
—	IRON ROD FOUND	---	GAS RISER
—	5/8" IRON ROD W/YELLOW CAP	---	GUARD POST
—	STAMPED "CEI" SET	---	QUIRY WIRE
—		---	HANDICAPPED FACILITY
—		---	IRON ROD FOUND
—		---	IRON ROD SET
—		---	CORRUGATED PLASTIC PIPE
—		---	MANHOLE UNKNOWN TYPE

IRRIGATION NOTES

SYMBOL	NOTE	MANUFACTURE/MODEL/DESCRIPTION
—	64B	MAIN LINE SHOWN HERE FOR DRAWING PURPOSES ONLY. CONTRACTOR SHALL INSTALL MAIN LINE AND OTHER IRRIGATION COMPONENTS WITHIN THE PROPERTY.
—	79A	IRRIGATION METER: 1" METER (SEE CIVIL PLANS FOR EXACT LOCATION).
—	79B	IRRIGATION LATERAL LINE: PVC CLASS 200. SEE IRRIGATION PIPE SCHEDULE
—	79C	IRRIGATION MAINLINE: 1" PVC SCHEDULE 40.
—	79D	IRRIGATION SLEEVE: PVC SCHEDULE 40 TYPICAL. SLEEVE SHALL ALLOW FOR IRRIGATION PIPING AND THERE RELATED COUPLINGS TO EASILY SLIDE THROUGH SLEEVING MATERIAL. EXTEND SLEEVES 18" BEYOND EDGES OF PAVING OR CONSTRUCTION LIMITS. PROVIDE ONE (1) ADDITIONAL 4" DIA. SCHEDULE 40 PVC SLEEVE BETWEEN ALL ISLANDS FOR FUTURE USE. PROVIDE 3/4" DIA. SCHEDULE 80 PVC BETWEEN IRRIGATION CONTROLLER AND HYDROMETER/FLOW SENSOR FOR FLOW SENSOR WIRE.
—	79E	Y-STRAINER. PER CITY/LOCAL CODES.
—	79F	ISOLATION VALVE.
—	79G	BRASS BALL VALVE.
—	79H	3/4" SCHEDULE 80 PVC FLOW SENSOR WIRE CONDUIT FROM FLOW SENSOR LOCATION TO IRRIGATION CONTROLLER PEDESTAL. CONTRACTOR MUST PROVIDE PULL STRING.
—	79J	SUBSURFACE DRIP IRRIGATION FLUSH VALVE: NIBCO LINE-SIZE TRUE-UNION BALL TIP 24" LENGTH FLEX-TUBING COILED IN A 6" DIA. • INSTALL ONE (1) IN EACH ISOLATED PLANTER AREA AT LOW POINT IN SYSTEM, OPPOSITE LOW-FLOW VALVE ASSEMBLY. • ROUND VALVE BOX: INSTALL ONE IN EACH ISOLATED PLANTER ARE AT LOW POINT IN SYSTEM OPPOSITE LOW-FLOW VALVE ASSEMBLY.

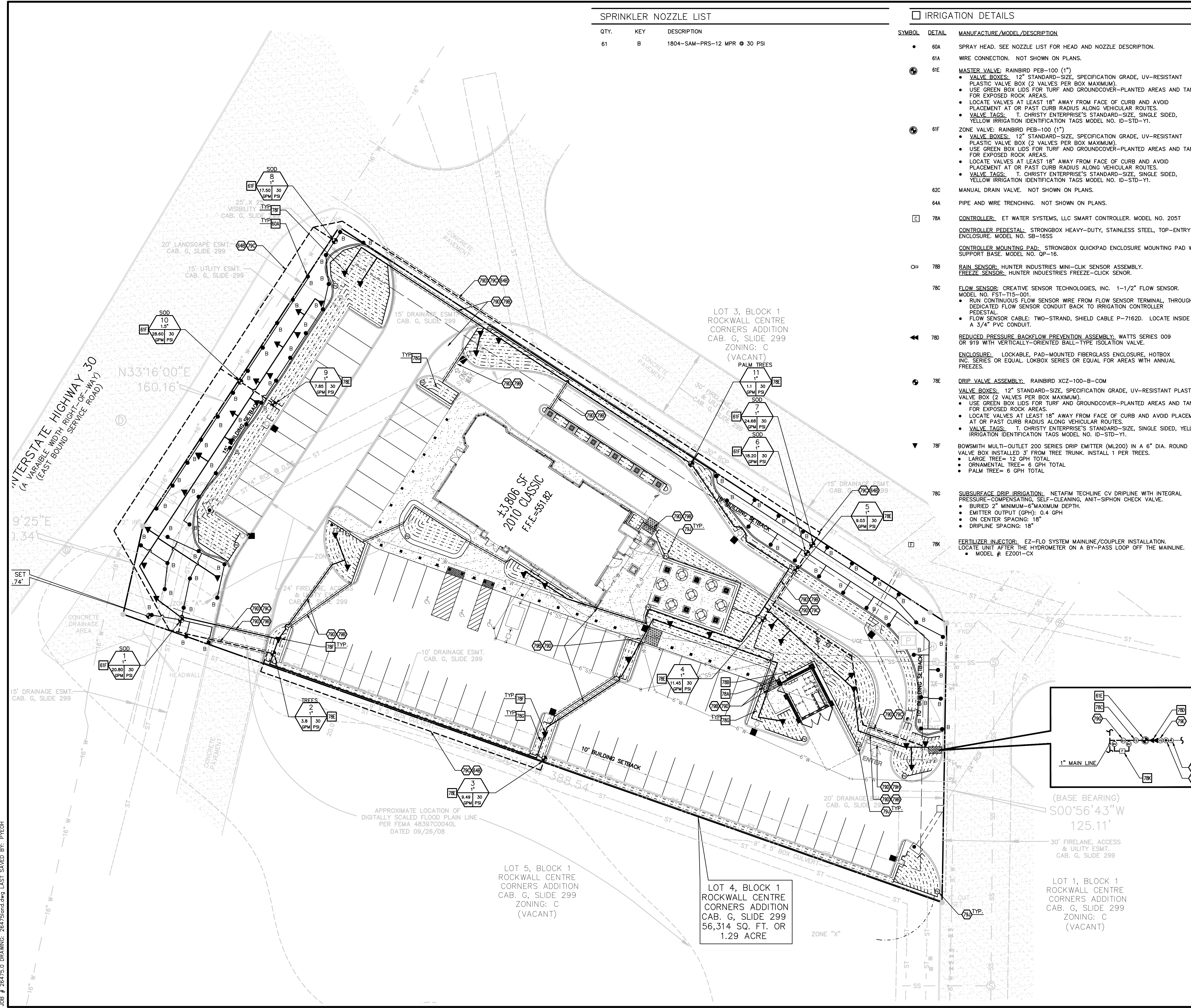
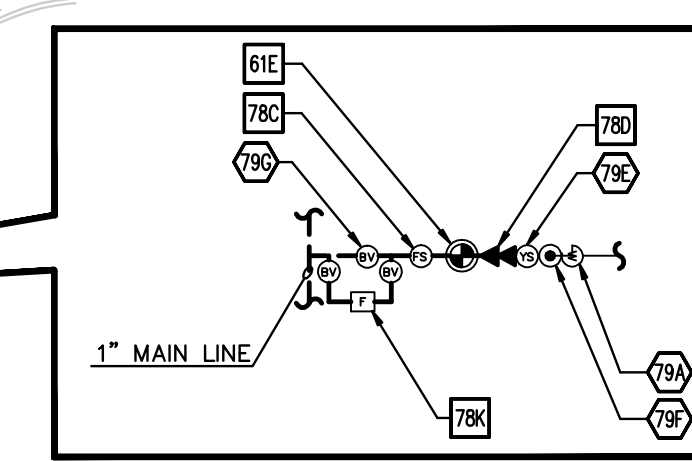
PROPOSED

---	BOUNDARY LINE
---	RIGHT OF WAY LINE
---	STORM DRAIN
○	ZONE DESIGNATION
○	VALVE SIZE
○	DESIGN PRESSURE - POUNDS PER SQUARE INCH
○	DESIGN DEMAND - GALLONS PER MINUTE

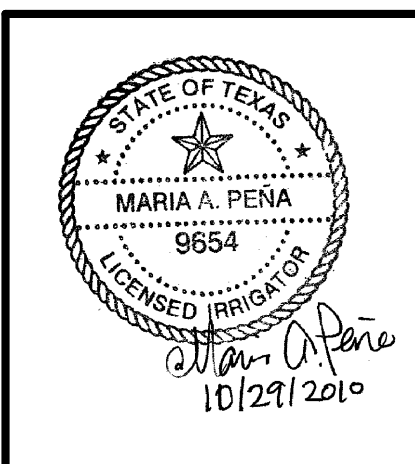
IRRIGATION PIPE SCHEDULE

CLASS 200 IRRIGATION PIPE SCHEDULE	
PIPE SIZE	G.P.M.
3/4"	61-1020
1"	11-18
1-1/4"	19-27
1-1/2"	28-36
2"	37-57
2-1/2"	58-80
3"	

NOTE: IN SOME CASES, IRRIGATION PIPE SIZES SHOWN ON IRRIGATION PLANS ARE LARGER THAN THE SIZE SHOWN ON PIPE SCHEDULE DUE TO HYDRAULIC LOSSES. USE PIPE SIZES AS SHOWN ON IRRIGATION PLANS IF PROVIDED.



JOB # 26475.0 DRAWING: 26475land.dwg LAST SAVED BY: PVECH



INITIAL DESIGN	9/3/10	LWY	FOA	PHY	PHY
DATE	PRN	PM	DES	DRW	
DRIVE-THRU RESTAURANT					
CEI Engineering Associates, Inc.					
ENGINEERS • PLANNERS • SURVEYORS LANDSCAPE ARCHITECTS • ENVIRONMENTAL SCIENTISTS					
3030 LBJ Freeway, Suite 100 Dallas, TX 75234			(972)488-3737 (972)488-6732		
IRRIGATION PLAN 1106 E. I. H. 30				DATE	SHEET NO.
				10-29-10	L3
				2:31 PM	
				REV-0	
F-7524 ROCKWALL TX					