

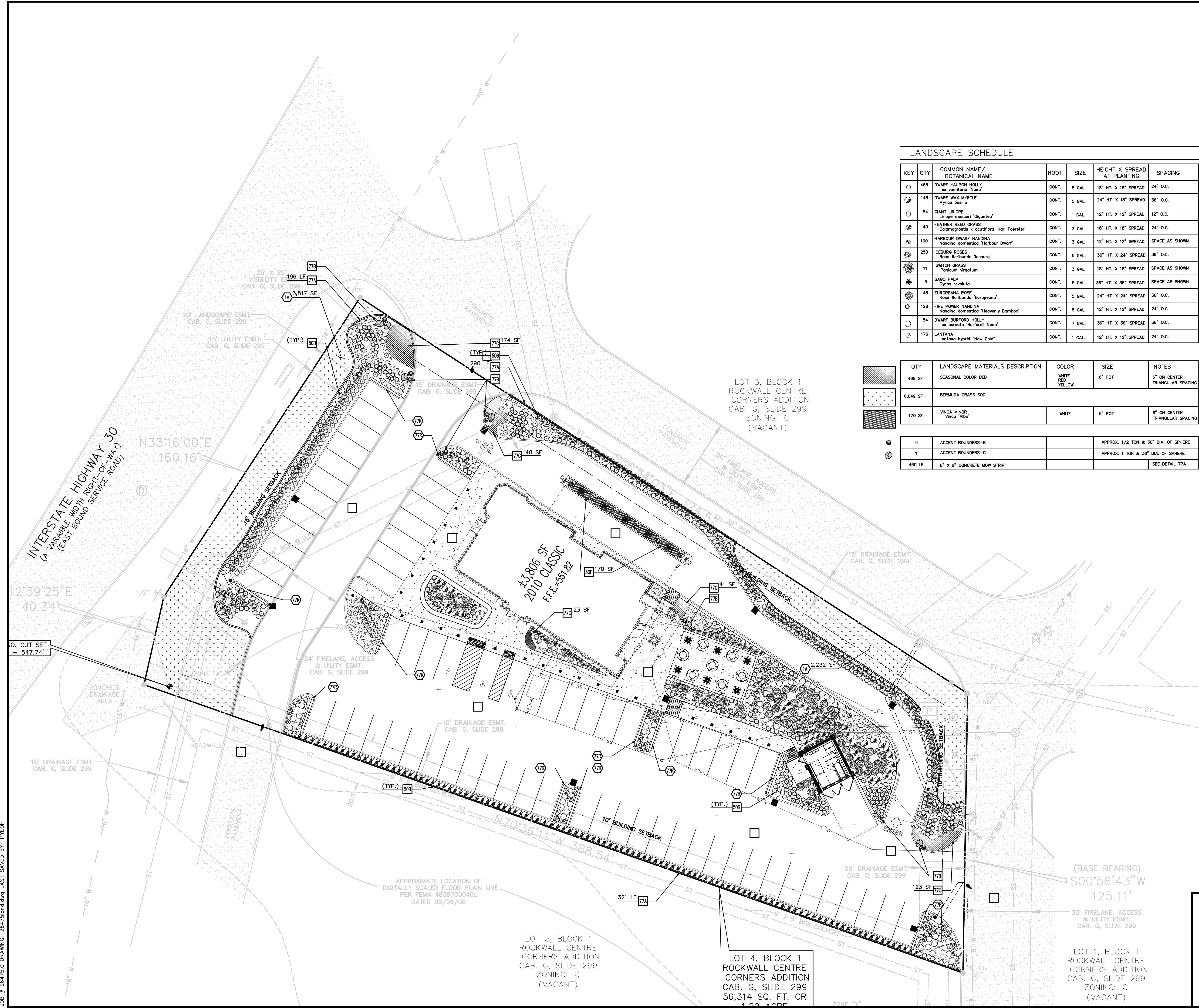
**LEGEND**

EXISTING		PROPOSED	
	LIGHT POLE - 1 IN LINE LAMP		BOUNDARY LINE
	MONITORING WELL		RIGHT OF WAY LINE
	PK NAIL SET		STORM DRAIN
	PK NAIL FOUND		TYPICAL PLANTING WITH QUANTITY AND KEY (SEE PLANT LIST)
	PARKING SPACE COUNT		CONCRETE MOW STRIP
	BILLBOARD/PYLON		
	RISER TRAFFIC SIGNAL		
	SIGN		
	SEWER MANHOLE		
	SIGN-TELEPHONE WARNING		
	TRAFFIC SIGNAL		
	UTILITY POLE		
	WATER METER		
	WATER VALVE		
	D.R.C.C.T.		
	P.R.C.C.T.		
	IRF		
	IRS		
	CONTROLLING MONUMENT		
	EAST		
	NORTH		
	SOUTH		
	WEST		
	BOUNDARY LINE		
	NATURAL GAS		
	SANITARY SEWER LINES		
	WATER LINES		
	OVERHEAD ELECTRIC		
	X CUT		
	DRAINAGE MANHOLE		
	VAULT ELECTRIC		
	FIRE HYDRANT		
	SIGN-FIBER OPTIC WARNING		
	GAS RISER		
	GUARD POST		
	GUY WIRE		
	HANDICAPPED FACILITY		
	IRON ROD FOUND		
	IRON ROD SET		
	CORRUGATED PLASTIC PIPE		
	MANHOLE UNKNOWN TYPE		

**LANDSCAPE SCHEDULE**

KEY	QTY	COMMON NAME/ BOTANICAL NAME	ROOT	SIZE	HEIGHT X SPREAD AT PLANTING	SPACING
	468	DWARF YALPON HOLLY Ilex vomitoria 'Nana'	CONT.	5 GAL.	18" HT. X 18" SPREAD	24" O.C.
	145	DWARF WAX MYRTLE Myrica pauciflora	CONT.	5 GAL.	24" HT. X 18" SPREAD	36" O.C.
	54	GIANT LIRIODIE Lilippe muscori 'Gigantea'	CONT.	1 GAL.	12" HT. X 12" SPREAD	12" O.C.
	40	FEATHER REED GRASS Calamagrostis x acutiflora 'Karl Foerster'	CONT.	3 GAL.	18" HT. X 18" SPREAD	24" O.C.
	100	HARBOUR DWARF NANDINA Nandina domestica 'Harbour Dwarf'	CONT.	3 GAL.	12" HT. X 12" SPREAD	SPACE AS SHOWN
	250	ICEBURG ROSES Rosa floribunda 'Iceburg'	CONT.	5 GAL.	30" HT. X 24" SPREAD	36" O.C.
	11	SWITCH GRASS Panicum virgatum	CONT.	3 GAL.	18" HT. X 18" SPREAD	SPACE AS SHOWN
	5	SAGO PALM Cycas revoluta	CONT.	5 GAL.	36" HT. X 36" SPREAD	SPACE AS SHOWN
	48	EUROPEAN ROSE Rosa floribunda 'European'	CONT.	5 GAL.	24" HT. X 24" SPREAD	36" O.C.
	128	FIRE POWER NANDINA Nandina domestica 'Heavenly Bamboo'	CONT.	5 GAL.	12" HT. X 12" SPREAD	24" O.C.
	54	DWARF BURFORD HOLLY Ilex cornuta 'Burford Nano'	CONT.	7 GAL.	36" HT. X 36" SPREAD	36" O.C.
	176	LANTANA Lantana hybrid 'New Gold'	CONT.	1 GAL.	12" HT. X 12" SPREAD	24" O.C.

QTY	LANDSCAPE MATERIALS DESCRIPTION	COLOR	SIZE	NOTES
469 SF	SEASONAL COLOR BED	WHITE RED YELLOW	6" POT	6" ON CENTER TRIANGULAR SPACING
6,049 SF	BERMUDA GRASS SOO			
170 SF	VINCA MINOR Vinca 'Alba'	WHITE	6" POT	6" ON CENTER TRIANGULAR SPACING
11	ACCENT BOUNDERS-B			APPROX. 1/2 TON & 30" DIA. OF SPHERE
7	ACCENT BOUNDERS-C			APPROX. 1 TON & 36" DIA. OF SPHERE
480 LF	6" X 6" CONCRETE MOW STRIP			SEE DETAIL 77A



**LANDSCAPE DETAILS**

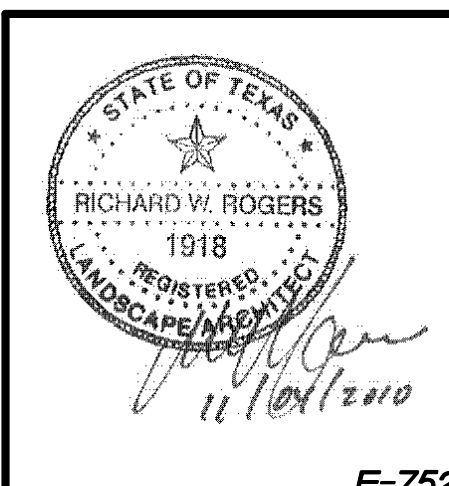
- 50B SHRUB PLANTING (TYP.)
- 50F GROUNDCOVER PLANTING (TYP.)
- 77A 6" CONCRETE MOW STRIP
- 77B ACCENT BOULDER (TYP.)
- 77C COLOR PLANTING (TYP.)

**LANDSCAPE NOTES**

- 1A GRASSED AREA (BERMUDAGRASS)
- 77R 12" CONCRETE STEP OFF ADJACENT TO PARKING SPACES

**LANDSCAPE NOTES AND PLANT LIST**

A. SEE LANDSCAPE NOTES AND DETAILS SHEET (SHEET L2) FOR GENERAL NOTES AND DETAILS.



INITIAL DESIGN	9/3/10	LWY	FOA	PHY	PHY
DATE	PRN	PM	DES	DES	DRW
<b>DRIVE-THRU RESTAURANT</b>					
<b>CEI Engineering Associates, Inc.</b>					
ENGINEERS • PLANNERS • SURVEYORS LANDSCAPE ARCHITECTS • ENVIRONMENTAL SCIENTISTS					
3030 LB Freeway, Suite 100 Dallas, TX 75234			(972)488-3737 (972)488-6732		
<b>PLANTING PLAN</b> 1106 E. I. H. 30				DATE 10-29-10 2:31 PM REV-0	SHEET NO. <b>L12</b>
F-7524 ROCKWALL TX					

JOB # 26475.0 DRAWING: 26475land.dwg LAST SAVED BY: PVECH