

CITY OF ROCKWALL, TEXAS LANDSCAPE REQUIREMENTS

INTERIOR PARKING LOT LANDSCAPING REQUIREMENTS (1 CANOPY TREE PER 10 PARKING SPACES) 70 PARKING SPACES	
REQUIRED	7 TREES
PROVIDED	7 TREES
SITE AREA = 56,314 SF	
REQUIRED OVERALL LANDSCAPED AREA	15% (8,447 SF)
PROPOSED OVERALL LANDSCAPE AREA	29.5 % (16,609 SF)
EXTERIOR LANDSCAPE REQUIREMENTS (H-30 OVERLAY - 20' LANDSCAPE BUFFER) 3 CANOPY TREES AND 4 ACCENT TREES PER 100 LF OF FRONTAGE (200.5 LF FRONTAGE)	
REQUIRED	6 CANOPY TREES 8 ACCENT TREES
PROVIDED	6 CANOPY TREES 8 ACCENT TREES

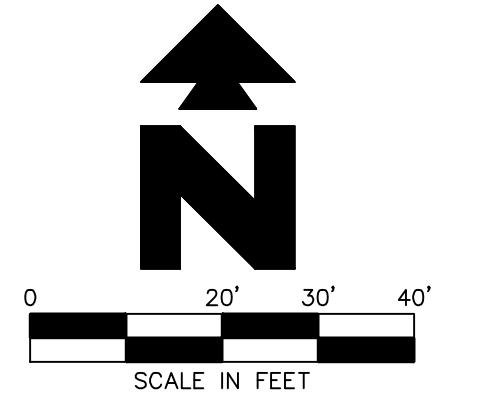
LANDSCAPE SCHEDULE

KEY	QTY	COMMON NAME/ BOTANICAL NAME	ROOT	SIZE	HEIGHT X SPREAD AT PLANTING	SPACING
○	468	DWARF YAUJON HOLLY <i>Ilex vomitoria 'Nana'</i>	CONT.	5 GAL.	18" HT. X 18" SPREAD	24" O.C.
○	145	DWARF WAX MYRTLE <i>Myrica pauciflora</i>	CONT.	5 GAL.	24" HT. X 18" SPREAD	36" O.C.
○	54	GIANT LIRIOPE <i>Liriope muscari 'gigantea'</i>	CONT.	1 GAL.	12" HT. X 12" SPREAD	12" O.C.
✱	40	FEATHER REED GRASS <i>Colomoglossa x acutiflora 'Karl Foerster'</i>	CONT.	3 GAL.	18" HT. X 18" SPREAD	24" O.C.
⊙	100	HARBOUR DWARF NANDINA <i>Nandina domestica 'harbour Dwarf'</i>	CONT.	3 GAL.	12" HT. X 12" SPREAD	SPACE AS SHOWN
⊙	250	ICEBURG ROSES <i>Rosa floribunda 'Iceburg'</i>	CONT.	3 GAL.	30" HT. X 24" SPREAD	36" O.C.
⊙	11	SWITCH GRASS <i>Panicum virgatum</i>	CONT.	3 GAL.	18" HT. X 18" SPREAD	SPACE AS SHOWN
⊙	5	SAGO PALM <i>Cycas revoluta</i>	CONT.	5 GAL.	36" HT. X 36" SPREAD	SPACE AS SHOWN
⊙	48	EUROPEAN ROSE <i>Rosa floribunda 'Europaea'</i>	CONT.	5 GAL.	24" HT. X 24" SPREAD	36" O.C.
⊙	128	FIRE POWER NANDINA <i>Nandina domestica 'Heavenly Bamboo'</i>	CONT.	5 GAL.	12" HT. X 12" SPREAD	24" O.C.
⊙	54	DWARF BURFORD HOLLY <i>Ilex cornuta 'Burford Nano'</i>	CONT.	7 GAL.	36" HT. X 36" SPREAD	36" O.C.
⊙	176	LANTANA <i>Lantana hybrid 'New Gold'</i>	CONT.	1 GAL.	12" HT. X 12" SPREAD	24" O.C.

QTY	LANDSCAPE MATERIALS DESCRIPTION	COLOR	SIZE	NOTES
468 SF	SEASONAL COLOR BED	WHITE RED YELLOW	6" POT	6" ON CENTER TRIANGULAR SPACING
6,048 SF	BERMUDA GRASS SOD			
170 SF	WVCA MINOR <i>Vesca 'Aba'</i>	WHITE	6" POT	6" ON CENTER TRIANGULAR SPACING
11	ACCENT BOUNDERS-B			APPROX. 1/2 TON & 30" DIA. OF SPHERE
7	ACCENT BOUNDERS-C			APPROX. 1 TON & 36" DIA. OF SPHERE
460 LF	6" X 6" CONCRETE MOW STRIP			SEE DETAIL 77A

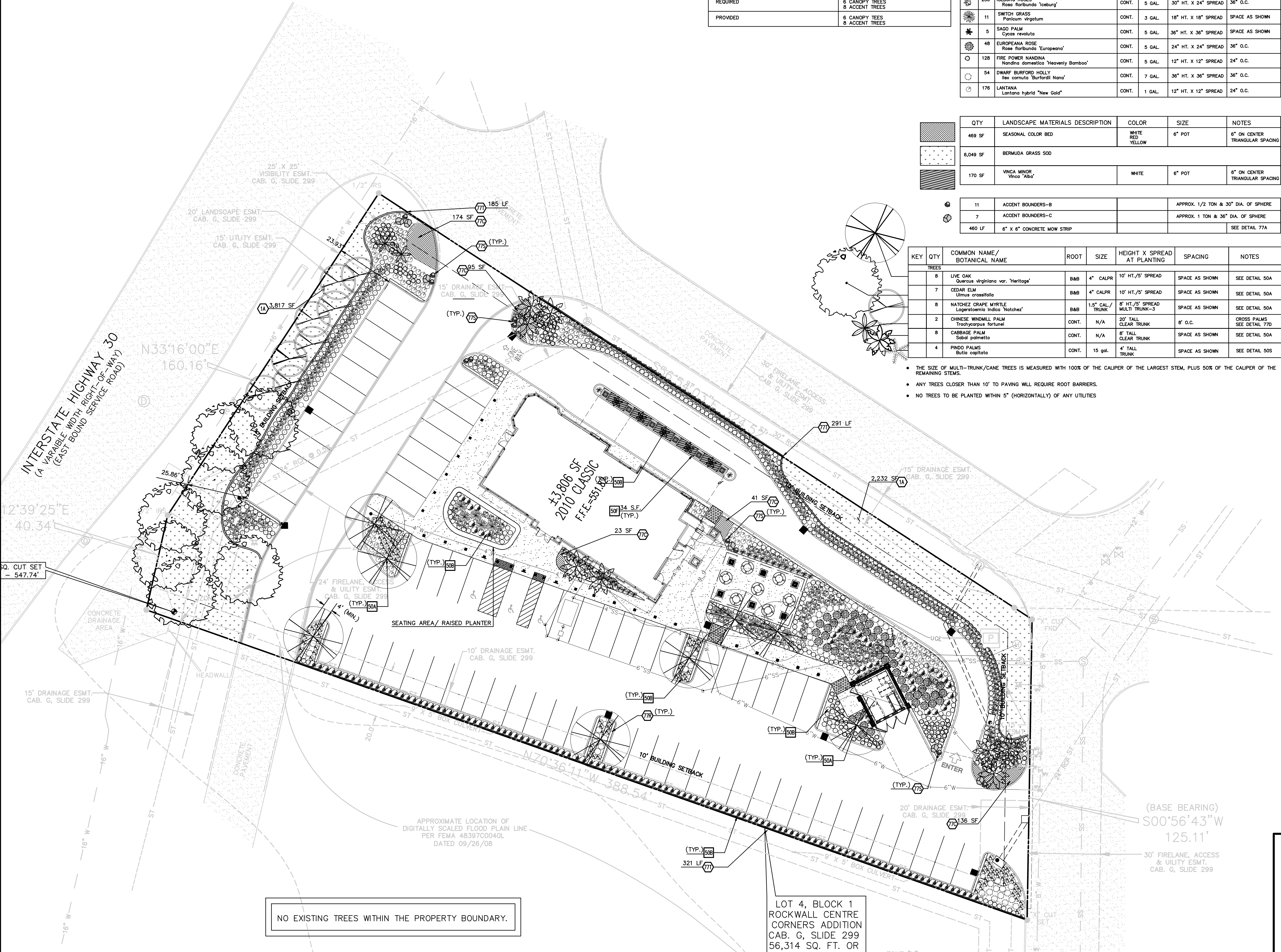
KEY	QTY	COMMON NAME/ BOTANICAL NAME	ROOT	SIZE	HEIGHT X SPREAD AT PLANTING	SPACING	NOTES
○	8	LIVE OAK <i>Quercus virginiana var. 'Nirajoga'</i>	B&B	4" CALPR	10' HT./5' SPREAD	SPACE AS SHOWN	SEE DETAIL 50A
○	7	CEDAR ELM <i>Ulmus crassifolia</i>	B&B	4" CALPR	10' HT./5' SPREAD	SPACE AS SHOWN	SEE DETAIL 50A
○	8	NATCHEZ CRAPE MYRTLE <i>Lagerstroemia indica 'Natchez'</i>	B&B	1.5" CAL/ TRUNK	8' HT./5' SPREAD MULTI TRUNK-3	SPACE AS SHOWN	SEE DETAIL 50A
○	2	CHINESE WINDMILL PALM <i>Trachycarpus fortunei</i>	CONT.	N/A	20' TALL CLEAR TRUNK	8' O.C.	CROSS PALMS SEE DETAIL 77D
○	8	CABBAGE PALM <i>Sabal palmetto</i>	CONT.	N/A	8' TALL CLEAR TRUNK	SPACE AS SHOWN	SEE DETAIL 50A
○	4	PINDO PALMS <i>Bulbinella capitata</i>	CONT.	15 gal.	4' TALL TRUNK	SPACE AS SHOWN	SEE DETAIL 50S

- THE SIZE OF MULTI-TRUNK/CANE TREES IS MEASURED WITH 100% OF THE CALIPER OF THE LARGEST STEM, PLUS 50% OF THE CALIPER OF THE REMAINING STEMS.
- ANY TREES CLOSER THAN 10' TO PAVING WILL REQUIRE ROOT BARRIERS.
- NO TREES TO BE PLANTED WITHIN 5' (HORIZONTALLY) OF ANY UTILITIES



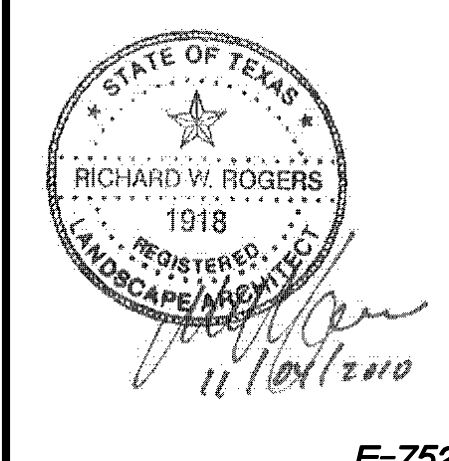
LEGEND

EXISTING		PROPOSED	
○	LIGHT POLE - 1 IN LINE LAMP	—	BOUNDARY LINE
○	MONITORING WELL	—	NATURAL GAS
○	PK NAIL SET	—	SANITARY SEWER LINES
○	PK NAIL FOUND	—	WATER LINES
○	PARKING SPACE COUNT	—	OVERHEAD ELECTRIC
—	BILLBOARD/PYLON	—	"X" CUT
—	RISER TRAFFIC SIGNAL	—	DRAINAGE MANHOLE
—	SIGN	—	VAULT ELECTRIC
—	SEWER MANHOLE	—	FIRE HYDRANT
—	SIGN-TELEPHONE WARNING	—	SIGN-FIBER OPTIC WARNING
—	TRAFFIC SIGNAL	—	GAS RISER
—	UTILITY POLE	—	GUARD POST
—	WATER METER	—	GUAY WIRE
—	WATER VALVE	—	HANDICAPPED FACILITY
—	DEED RECORDS	—	IRON ROD FOUND
—	COLLIN COUNTY, TEXAS	—	IRON ROD SET
—	PLAT RECORDS	—	CORRUGATED PLASTIC PIPE
—	COLLIN COUNTY, TEXAS	—	MANHOLE UNKNOWN TYPE
—	IRON ROD FOUND	—	
—	5/8" IRON ROD W/YELLOW CAP	—	
—	STAMPED "CEI" SET	—	



NO EXISTING TREES WITHIN THE PROPERTY BOUNDARY.

LOT 4, BLOCK 1
ROCKWALL CENTRE
CORNERS ADDITION
CAB. G. SLIDE 299
56,314 SQ. FT. OR
1.29 ACRES



INITIAL DESIGN	9/3/10	LWY	FOA	PHY	PHY
DATE	PRN	PM	DES	DRW	
DRIVE-THRU RESTAURANT					
CEI Engineering Associates, Inc.					
ENGINEERS • PLANNERS • SURVEYORS LANDSCAPE ARCHITECTS • ENVIRONMENTAL SCIENTISTS					
3030 LBJ Freeway, Suite 100 Dallas, TX 75234			(972)488-3737 (972)488-6732		
LANDSCAPE PLAN				DATE	SHEET NO.
1106 E. I. H. 30				10-29-10	L1
F-7524 ROCKWALL, TX				2:31 PM	REV-0

JOB # 26475.0 DRAWING: 26475land.dwg LAST SAVED BY: PVECH